

Attachment E-40



REFLECTED CEILING PLAN NOTES

- GENERAL CONTRACTOR TO COORDINATE MECHANICAL, PLUMBING, AND ELECTRICAL DRAWINGS AND NOTIFY ARCHITECT IMMEDIATELY OF ANY DISCREPANCY PRIOR TO COMMENCEMENT OF WORK.
- GC TO ARRANGE AND MODIFY ALL EXISTING NON-VISIBLE MECHANICAL, PLUMBING, AND ELECTRICAL ITEMS TO ENSURE ADEQUATE CLEARANCE FOR CEILING INSTALLATION AS SHOWN. GENERAL CONTRACTOR NOTIFY ARCHITECT IMMEDIATELY OF ANY DISCREPANCY, PRIOR TO COMMENCEMENT OF WORK.
- GENERAL CONTRACTOR TO VERIFY EXTENT OF EXISTING CONSTRUCTION IN FIELD. GC SHALL IMMEDIATELY NOTIFY THE ARCHITECT OF ANY "AS-BUILT" CONDITIONS CONTRARY TO THOSE SHOWN OR INFERRED FROM THE CONSTRUCTION DOCUMENTS, PRIOR TO COMMENCEMENT OF WORK.
- ALL MECHANICAL AND PLUMBING WORK ABOVE CEILING SHALL BE LOCATED TO MINIMIZE REQUIRED ACCESS PANELS IN INACCESSIBLE CEILING AREAS. GENERAL CONTRACTOR SHALL SUBMIT COORDINATED LAYOUT DRAWINGS FOR ALL REQUIRED ACCESS PANELS TO ARCHITECT FOR REVIEW PRIOR TO FRAMING. GC TO NOTIFY ARCHITECT IMMEDIATELY UPON DISCOVERY OF ACCESS PANEL REQUIREMENTS NOT SHOWN ON CONSTRUCTION DOCUMENTS. ALL ACCESS PANELS IN GWB CEILINGS TO BE IBC STYLE MARK DRYWALL ACCESS CEILING DOOR. SIZE TO ACCOMMODATE REQUIRED ACCESS BUT SHALL BE MINIMUM POSSIBLE DIMENSION. PUN PAN FOR FLUSH DRYWALL INSTALLATION.
- GC AND SUBCONTRACTOR TO THOROUGHLY VERIFY AND COORDINATE ALL CONDITIONS IN FIELD INCLUDING ELECTRICAL PANEL CAPACITY, LOCATION AND CLEARANCES AT MECH DUCTS, ELECTRICAL ITEMS, SPRINKLERS AND ASSOCIATED PIPING AND SLAB HEIGHTS.
- CONTRACTOR TO VERIFY AVAILABILITY AND QUANTITY OF FIXTURES NOTED TO BE RELOCATED. IF A NEW FIXTURE IS REQUIRED, IT IS TO MATCH EXISTING.
- REFER TO ARCHITECTURAL RCP FOR EXACT QUANTITY AND LOCATION OF LIGHT FIXTURES, DIMMING REQUIREMENTS, ETC. ARCHITECTURAL DRAWINGS GOVERN. GC & SUBCONTRACTOR TO THOROUGHLY REVIEW ARCHITECTURAL AND ENGINEERING DOCUMENTS AND TO NOTIFY ARCHITECT IMMEDIATELY OF DISCREPANCIES FOR RESOLUTION PRIOR TO DELIVERY OF PRICING AND/OR PROCEEDING WITH WORK.
- ANY DAMAGE TO THE NEW OR EXISTING CONSTRUCTION CAUSED BY THE GENERAL CONTRACTORS NEGLIGENCE, INADEQUATE PROTECTION, OR INADEQUATE SECURITY MEASURES DURING CONSTRUCTION ARE TO BE CORRECTED AT THE GENERAL CONTRACTORS EXPENSE.
- FOR ADDITIONAL INFORMATION REGARDING LIGHT FIXTURE SPECIFICATIONS, REFER TO ENGINEERING DRAWINGS.
- FOR EMERGENCY LIGHTING LOCATIONS REFER TO ENGINEERING DRAWINGS.
- FOR EXIT SIGN LOCATIONS & SPECIFICATIONS REFER TO ENGINEERING DRAWINGS. ALL EXIT SIGNS ARE TO BE LOCATED IN THE CENTER OF A CEILING TILE, UNLESS NOTED OTHERWISE.
- REFER TO MEP DRAWINGS FOR LOCATIONS AND TYPES OF EXIT SIGNS, STROBES, AND PULLS. ALL EXIT SIGNS TO BE CENTERED ON HALLWAYS AND/OR OPENING UNLESS OTHERWISE NOTED.
- REFER TO MEP ENGINEERING DOCUMENTS FOR LOCATIONS OF SUPPLY AND RETURN AIR DIFFUSERS, THERMOSTATS, EXIT LIGHTS AND LIFE SAFETY EQUIPMENT.
- UNLESS NOTED OTHERWISE, REFER TO THE ENGINEERING DRAWINGS FOR LIGHT SWITCHING & LIGHT SWITCH LOCATIONS.

- GANG ALL ADJACENT SWITCHES UNDER ONE (1) COVERPLATE. IF NEW DIMMERS & SWITCHES ARE ADJACENT THEY ARE TO BE AT EQUAL HEIGHT WITH "1" BETWEEN COVERPLATES.
- ALL SPRINKLER HEADS, LIGHT FIXTURES, EXIT SIGNS, SPEAKER GRILLS, SMOKE DETECTORS AND SIMILAR DEVICES SHALL BE LOCATED AT THE CENTER OF CEILING TILE UNLESS OTHERWISE NOTED.
- ALL NEW DIMENSIONS ARE FROM FINISH SURFACE TO FINISH SURFACE, UNLESS NOTED OTHERWISE.
- ALL HOLES IN SLABS ARE TO BE FILLED WITH CODE COMPLIANT FILLER. REFER TO MEP SPECS FOR SLAB PENETRATION FIRE-STOP REQUIREMENTS. MAINTAIN THE EXISTING FLOOR SLAB RATING AT ALL FLOOR SLAB PENETRATIONS AS REQUIRED BY UL DESIGN GUIDELINES.
- ALL CEILING GRID AND CEILING TILE IS EXISTING TO REMAIN UNLESS OTHERWISE NOTED. PATCH & REPAIR ALL EXISTING TO REMAIN ELEMENTS TO LIKE NEW CONDITION. EXISTING CEILING HEIGHT IS APPROX. 8'-0" AFF.
- GC TO PROVIDE AN ALLOWANCE FOR ALL EQUIPMENT AND LABOR REQUIRED FOR SYNCHRONIZATION OF BUILDING STROBES.
- SOUND LINED TRANSFER DUCTS ARE TO BE PROVIDED AT ALL ROOMS WITH SLAB TO SLAB PARTITIONS FOR RETURN AIR.
- PAINT EDGES OF OUT CEILING TILES REMAINING EXPOSED AFTER INSTALLATION. MATCH COLOR OF FACTORY FINISHED PANEL SURFACES USING COATING RECOMMENDED IN WRITING FOR THIS PURPOSE BY THE ACoustICAL PANEL MANUFACTURER.
- CLEAN EXPOSED SURFACES OF ACoustICAL PANEL CEILINGS, INCLUDING TRIM, EDGE MOLDINGS, AND SUSPENSION SYSTEM MEMBERS. COMPLY WITH MANUFACTURER'S WRITTEN INSTRUCTION FOR CLEANING AND TOUCH-UP OF MINOR FINISH DAMAGE. REMOVE AND REPLACE CEILING COMPONENTS THAT CANNOT BE SUCCESSFULLY CLEANED AND REPAIRED.
- AT ALL MAIN CONFERENCE ROOMS, VIDEOCONFERENCE ROOMS, RECEPTION AREAS, AND OTHER PRIMARY PUBLIC SPACES, GC SHALL PAINT PLENUM AREA (SLAB, DUCT, ETC. EXPOSED CEILING ELEMENTS) BLACK A MINIMUM OF 4" IN ALL DIRECTIONS FROM CENTERLINE OF ALL RETURN GRILLES. CONSULT AND COORDINATE FULL SCOPE OF THIS WORK PRIOR TO BID SUBMISSION WITH THE ARCHITECT.

PLAN SPECIFIC NOTES

- REFER TO POWER PLANS AND ELECTRICAL ENGINEERING DRAWINGS FOR LIGHTING POWER AND CONTROL NOTES AND REQUIREMENTS.
- COORDINATE MOUNTING OF PENDANT LIGHTS ON UNITS WITH ARCHITECT AND MEP ENGINEERS IN THE FIELD, IN RELATION TO UNDOUT LOCATIONS.
- GC TO INCLUDE PRICE TO REMOVE AND REINSTALLATION OF EXISTING PIPE GRID FOR REWORK OF MECH.
- GC TO ADD NEW CATCHWALK AND LADDER TO ALLOW FOR HVAC SERVICING. COORDINATE WITH MEP ENGINEER FOR EXACT LOCATION.
- CEILING PANELS THAT ARE REMOVED DUE TO NEW ROOF CONSTRUCTION TO BE REPLACED WITH NEW TO MATCH EXISTING.

REFLECTED CEILING PLAN LEGEND

NEW GRID AND TILE @ 9'-0" AFF.

PATTERNED TILE DENOTES FULL TILE & LOCATION TO START CEILING GRID. ADDITIONAL DIMENSIONS PROVIDED ON PLAN, AS REQUIRED.

EXPOSED CEILING TO UNDERSIDE OF UPPER SLAB. REMOVE ALL EXISTING UNUSED WIRING, DUCTWORK, ETC. DUCTWORK/HARDWARE TO BE AT A MINIMUM IN THIS AREA. ALL WIRING TO BE AT A MINIMUM IN THIS AREA, AND BUNDLED TO THE MINIMUM POSSIBLE CODE-COMPLIANT DIMENSIONS. PATCH ALL SLAB HOLES WITH CODE-COMPLIANT FILLER. SKIM COAT ALL ROUGH AREAS. (ALL DUCTWORK, HARDWARE, ETC. AND SLAB TO BE PAINTED CEILING WHITE).

NEW GWB CEILING. HEIGHT AS NOTED. INSTALL PITCON STR-063-050 TRIM REVEAL AT ALL WALL HEAD WHERE GWB CEILING AND GWB WALLS MEET. TYPICAL ALL LOCATIONS. ALL LOCATIONS TO BE PAINTED CEILING WHITE UNO.

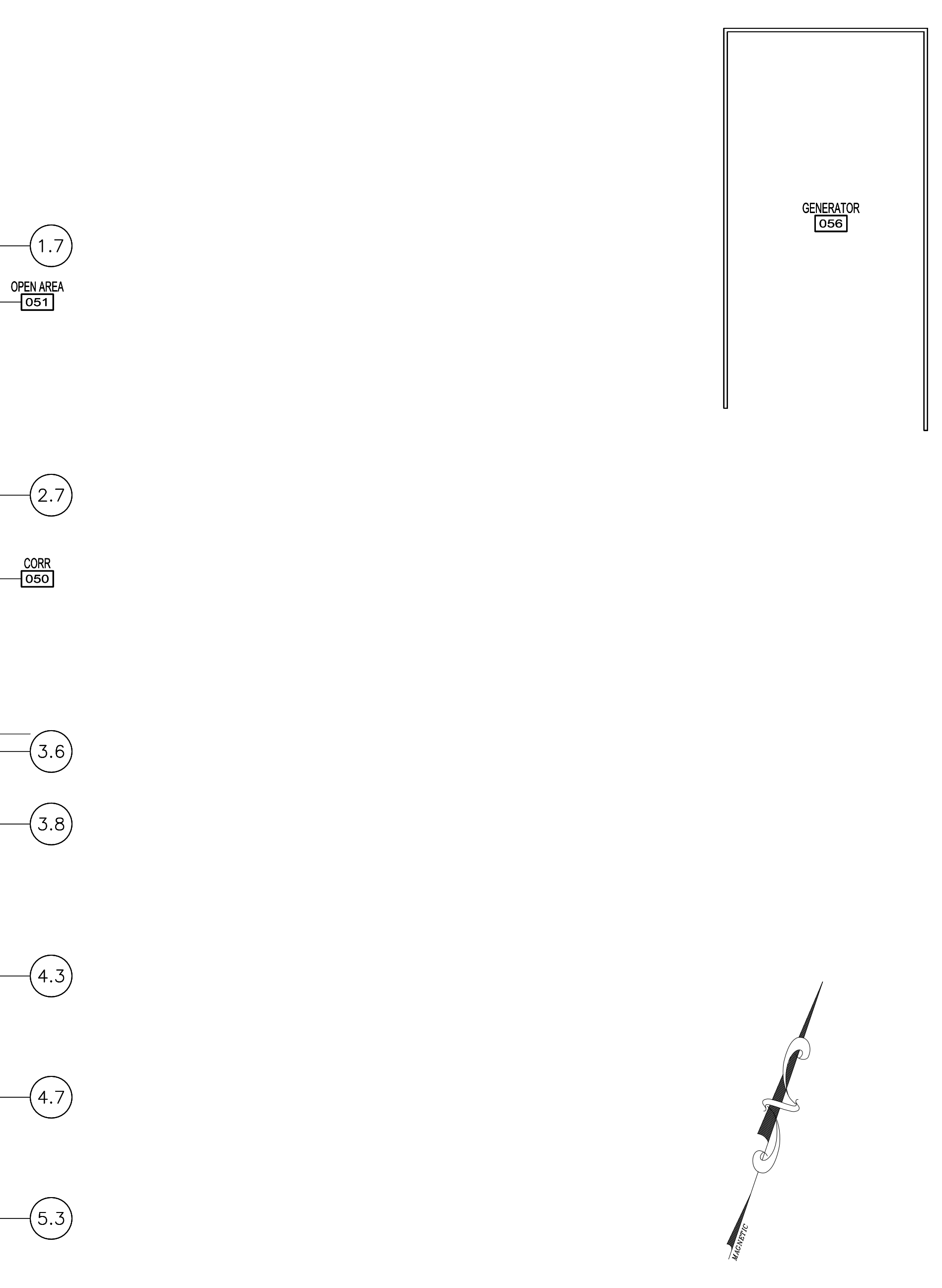
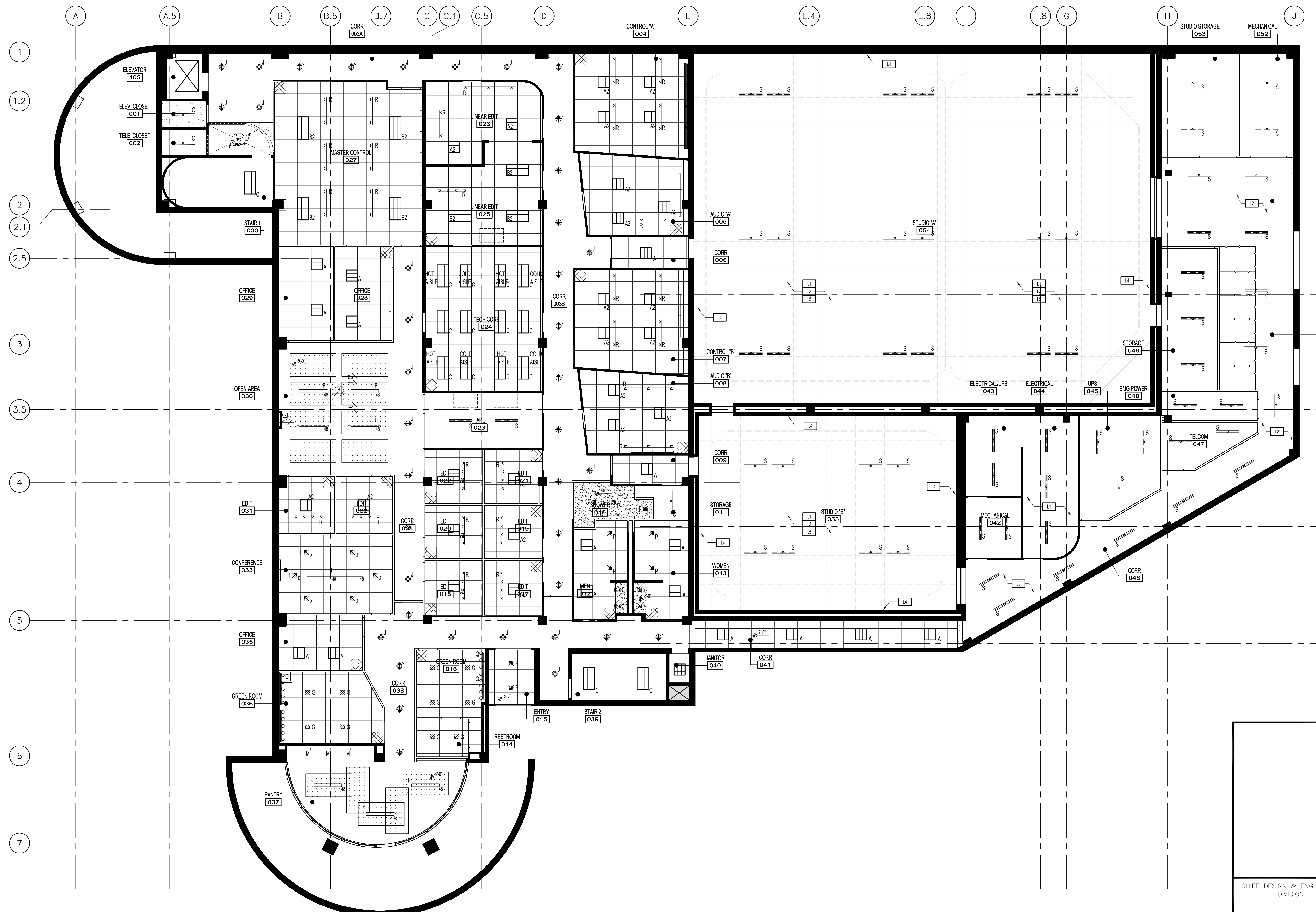
EXISTING GWB CEILING TO REMAIN.

NEW 48" x 96" CERTAIN TEED ECOPHON SUSPENDED CEILING TILE TO BE INSTALLED AS NOTED. GC TO VERIFY MOUNTING HEIGHT WITH ARCHITECT IN THE FIELD.

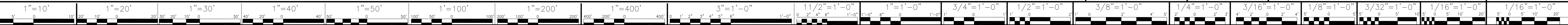
PROJECTOR ON STATIONARY MOUNT (PROVIDED BY AV VENDOR, INSTALLED BY GC). REFER TO ENGINEERING DRAWINGS FOR MORE INFORMATION.

LIGHT FIXTURE SCHEDULE

FIXTURE TYPE	SYMBOL	DESCRIPTION	LAMP	MANUFACTURER	CATALOG #	REMARKS
A	[Symbol]	2x2 RECESSED DIRECT-INDIRECT	LED	CREE	CR23-32-40K	
B	[Symbol]	2x4 RECESSED DIRECT-INDIRECT	LED	CREE	CR24-40LH-40K	PROVIDE EM FILTER
B2	[Symbol]	2x4 RECESSED DIRECT-INDIRECT	LED	CREE	CR24-40LH-40K	
C	[Symbol]	2x4 RECESSED DIRECT-INDIRECT	LED	CREE	CR24-20-40K	
D	[Symbol]	4 RECESSED LINEAR	T5	AUS	BR-9-1215-1040W-HV-COL-TAGE-D-CR0275-D	
E	[Symbol]	4 FLUORESCENT SUSPENDED LINEAR PENDANT	NO LONGER USED	NO LONGER USED
F	[Symbol]	4 FLUORESCENT SUSPENDED LINEAR PENDANT	T5	DECO	ENVA-28-LAV	
G	[Symbol]	LED DOWNLIGHT	LED	LITON	LHAK05027-1UE-DUN-4-8ALD8WFF	
H	[Symbol]	DIMMABLE LED DOWNLIGHT	LED	LITON	LHAK05027-1UE-DUN-4-8ALD8WFF	
I	[Symbol]	CF WALL WASHER	NO LONGER USED	NO LONGER USED
J	[Symbol]	GENERAL PENDANT	LED	LIGHTOLIER	R01L16	16" DIA.
K	[Symbol]	DECORATIVE PENDANT	26W CFL	EUREKA	4208-CF-230-CAC-SC	DETERMINE MOUNTING HEIGHT WITH ARCHITECT IN THE FIELD
L	[Symbol]	DECORATIVE PENDANT	...	EUREKA	4452-JC-RS-82-5A	DETERMINE MOUNTING HEIGHT WITH ARCHITECT IN THE FIELD
M	[Symbol]	UNDERCABINET LIGHTING	LED	ALCOO	AR8-1-0706-120-PR	LIGHTS TO BE DIMMABLE. GC TO DETERMINE EXACT QUANTITY REQ.
N	[Symbol]	WALL SCONCE	26W CFL	ALERA	GR-1CF28-WB-PH-W-6-U-2BT	MOUNT PER AIA REQUIREMENTS
O	[Symbol]	SURFACE MOUNTED OR SUSPENDED FLUORESCENT STRIP	T5	DAY BRITE	HEAVY DUTY STRIP-HS-2-32-LIN-C64	SURFACE MOUNT @ ACT. SUSPENDED @ OPEN CEILING
P	[Symbol]	SHOWER MOULDED MET LOCATION DOWNLIGHT	TT CFL	LIGHTOLIER	8091 COLW	
Q	[Symbol]	WALL MOUNTED VARIETY LIGHTS	100W INC	THOMAS LIGHTING	SL7425H BRUSHED NICKEL	
R	[Symbol]	DIMMABLE TRACK LIGHTING	LED	LITON	LTDN14-W48-W4 INTEGRATED DIMMER DRIVER	INCLUDE TRACKS AS REQUIRED AND AS INDICATED ON PLAN
S	[Symbol]	SURFACE MOUNTED OR SUSPENDED FLUORESCENT STRIP	T5	HUBBELL	WC-4-2-28	SUSPENDED @ OPEN CEILING



DESIGNED	OTJ ARCH	1	7/12/13	PM 07 - COMPLETE LIGHTING REVISION		
DRAWN	PR	-	10/03/12	ISSUE FOR BID		
CHECKED	LJ/BH	REVISION	DATE	DESCRIPTION	BY	
CERTIFICATION		REFLECTED CEILING PLAN - BASEMENT				
OCT RELOCATION 1899 9TH STREET N.E., WASHINGTON DC					DRAWING NO. 0-A4.0	
CHIEF DESIGN & ENGINEERING DIVISION	REGISTRATION NO. DATE	GOVERNMENT OF THE DISTRICT OF COLUMBIA DEPARTMENT OF REAL ESTATE SERVICES				
DATE	ARCHITECT	PROJ. NO. OCT-00001-RENO BLDG. NO. - DATE: OCTOBER 28, 2011				
OTJ ARCHITECTS		SHEET 28 OF 223				



REFLECTED CEILING PLAN NOTES

- GENERAL CONTRACTOR TO COORDINATE MECHANICAL, PLUMBING, AND ELECTRICAL DRAWINGS AND NOTIFY ARCHITECT IMMEDIATELY OF ANY DISCREPANCY PRIOR TO COMMENCEMENT OF WORK.
- GC TO ARRANGE AND MOODY ALL EXISTING NON-VISIBLE MECHANICAL, PLUMBING, AND ELECTRICAL ITEMS TO ENSURE ADEQUATE CLEARANCE FOR CEILING INSTALLATION AS SHOWN. GENERAL CONTRACTOR NOTIFY ARCHITECT IMMEDIATELY OF ANY DISCREPANCY, PRIOR TO COMMENCEMENT OF WORK.
- GENERAL CONTRACTOR TO VERIFY EXTENT OF EXISTING CONSTRUCTION IN FIELD. GC SHALL IMMEDIATELY NOTIFY THE ARCHITECT OF ANY "AS-BUILT" CONDITIONS CONTRARY TO THOSE SHOWN OR INFERRED FROM THE CONSTRUCTION DOCUMENTS, PRIOR TO COMMENCEMENT OF WORK.
- ALL MECHANICAL AND PLUMBING WORK ABOVE CEILING SHALL BE LOCATED TO MINIMIZE REQUIRED ACCESS PANELS IN INACCESSIBLE CEILING AREAS. GENERAL CONTRACTOR SHALL SUBMIT COORDINATED LAYOUT DRAWINGS FOR ALL REQUIRED ACCESS PANELS TO ARCHITECT FOR REVIEW PRIOR TO FRAMING. GC TO NOTIFY ARCHITECT IMMEDIATELY UPON DISCOVERY OF ACCESS PANEL REQUIREMENTS NOT SHOWN ON CONSTRUCTION DOCUMENTS. ALL ACCESS PANELS IN GWB CEILING TO BE ISC STYLE MARK DRYWALL ACCESS CEILING DOOR. SIZE TO ACCOMMODATE REQUIRED ACCESS BUT SHALL BE MINIMUM POSSIBLE DIMENSION. FUR PAN FOR FLUSH DRYWALL INSTALLATION.
- GC AND SUBCONTRACTOR TO THOROUGHLY VERIFY AND COORDINATE ALL CONDITIONS IN FIELD INCLUDING ELECTRICAL PANEL CAPACITY, LOCATION AND CLEARANCES AT MECH DUCTS, ELECTRICAL ITEMS, SPRINKLERS AND ASSOCIATED PIPING AND SLAB HEIGHTS.
- CONTRACTOR TO VERIFY AVAILABILITY AND QUANTITY OF FIXTURES NOTED TO BE RELOCATED. IF A NEW FIXTURE IS REQUIRED, IT IS TO MATCH EXISTING.
- REFER TO ARCHITECTURAL RCP FOR EXACT QUANTITY AND LOCATION OF LIGHT FIXTURES, DIMMING REQUIREMENTS, ETC. ARCHITECTURAL DRAWINGS GOVERN. GC & SUBCONTRACTOR TO THOROUGHLY REVIEW ARCHITECTURAL AND ENGINEERING DOCUMENTS AND TO NOTIFY ARCHITECT IMMEDIATELY OF DISCREPANCIES FOR RESOLUTION PRIOR TO DELIVERY OF PRICING AND/OR PROCEEDING WITH WORK.
- ANY DAMAGE TO THE NEW OR EXISTING CONSTRUCTION CAUSED BY THE GENERAL CONTRACTOR'S NEGLIGENCE, INADEQUATE PROTECTION, OR INADEQUATE SECURITY MEASURES DURING CONSTRUCTION ARE TO BE CORRECTED AT THE GENERAL CONTRACTOR'S EXPENSE.
- FOR ADDITIONAL INFORMATION REGARDING LIGHT FIXTURE SPECIFICATIONS, REFER TO ENGINEERING DRAWINGS.
- FOR EMERGENCY LIGHTING LOCATIONS REFER TO ENGINEERING DRAWINGS.
- FOR EXIT SIGN LOCATIONS & SPECIFICATIONS REFER TO ENGINEERING DRAWINGS. ALL EXIT SIGNS ARE TO BE LOCATED IN THE CENTER OF A CEILING TILE, UNLESS NOTED OTHERWISE.
- REFER TO MEP DRAWINGS FOR LOCATIONS AND TYPES OF EXIT SIGNS, STROBES, AND PULLS. ALL EXIT SIGNS TO BE CENTERED ON HALLWAYS AND/OR OPENING UNLESS OTHERWISE NOTED.
- REFER TO MEP ENGINEERING DOCUMENTS FOR LOCATIONS OF SUPPLY AND RETURN AIR DIFFUSERS, THERMOSTATS, EXIT LIGHTS AND LIFE SAFETY EQUIPMENT.
- UNLESS NOTED OTHERWISE, REFER TO THE ENGINEERING DRAWINGS FOR LIGHT SWITCHING & LIGHT SWITCH LOCATIONS.

- GANG ALL ADJACENT SWITCHES UNDER ONE (1) COVERPLATE. IF NEW DIMMERS & SWITCHES ARE ADJACENT THEY ARE TO BE AT EQUAL HEIGHT WITH 1" BETWEEN COVERPLATES.
- ALL SPRINKLER HEADS, LIGHT FIXTURES, EXIT SIGNS, SPEAKER GRILLS, SMOKE DETECTORS AND SIMILAR DEVICES SHALL BE LOCATED AT THE CENTER OF CEILING TILE UNLESS OTHERWISE NOTED.
- ALL NEW DIMENSIONS ARE FROM FINISH SURFACE TO FINISH SURFACE, UNLESS NOTED OTHERWISE.
- ALL HOLES IN SLABS ARE TO BE FILLED WITH CODE COMPLIANT FILLER. REFER TO MEP SPECS FOR SLAB PENETRATION FIRE-SHIELD REQUIREMENTS. MAINTAIN THE EXISTING FLOOR SLAB RATING AT ALL FLOOR SLAB PENETRATIONS AS REQUIRED BY UL DESIGN GUIDELINES.
- ALL CEILING GRID AND CEILING TILE IS EXISTING TO REMAIN UNLESS OTHERWISE NOTED. PATCH & REPAIR ALL EXISTING TO REMAIN ELEMENTS TO LIKE NEW CONDITION. EXISTING CEILING HEIGHT IS APPROX. 9'-0" AFF.
- GC TO PROVIDE AN ALLOWANCE FOR ALL EQUIPMENT AND LABOR REQUIRED FOR SYNCHRONIZATION OF BUILDING STROBES.
- SOUND LINED TRANSFER DUCTS ARE TO BE PROVIDED AT ALL ROOMS WITH SLAB TO SLAB PARTITIONS FOR RETURN AIR.
- PAINT EDGES OF OUT CEILING TILES REMAINING EXPOSED AFTER INSTALLATION. MATCH COLOR OF FACTORY FINISHED PANEL SURFACES USING COATING RECOMMENDED IN WRITING FOR THIS PURPOSE BY THE ACoustICAL PANEL MANUFACTURER.
- CLEAN EXPOSED SURFACES OF ACoustICAL PANEL CEILING, INCLUDING TRIM, EDGE MOLDINGS, AND SUSPENSION SYSTEM MEMBERS. COMPLY WITH MANUFACTURER'S WRITTEN INSTRUCTION FOR CLEANING AND TOUCH-UP OF MINOR FINISH DAMAGE. REMOVE AND REPLACE CEILING COMPONENTS THAT CANNOT BE SUCCESSFULLY CLEANED AND REPAIRED.
- AT ALL MAIN CONFERENCE ROOMS, VIDEOCONFERENCE ROOMS, RECEPTION AREAS, AND OTHER PRIMARY PUBLIC SPACES, GC SHALL PAINT PLENUM AREA (SLAB, DUCT, ETC. EXPOSED CEILING ELEMENTS) BLACK A MINIMUM OF 4" IN ALL DIRECTIONS FROM CENTERLINE OF ALL RETURN GRILLES. CONSULT AND COORDINATE FULL SCOPE OF THIS WORK PRIOR TO BID SUBMISSION WITH THE ARCHITECT.

PLAN SPECIFIC NOTES

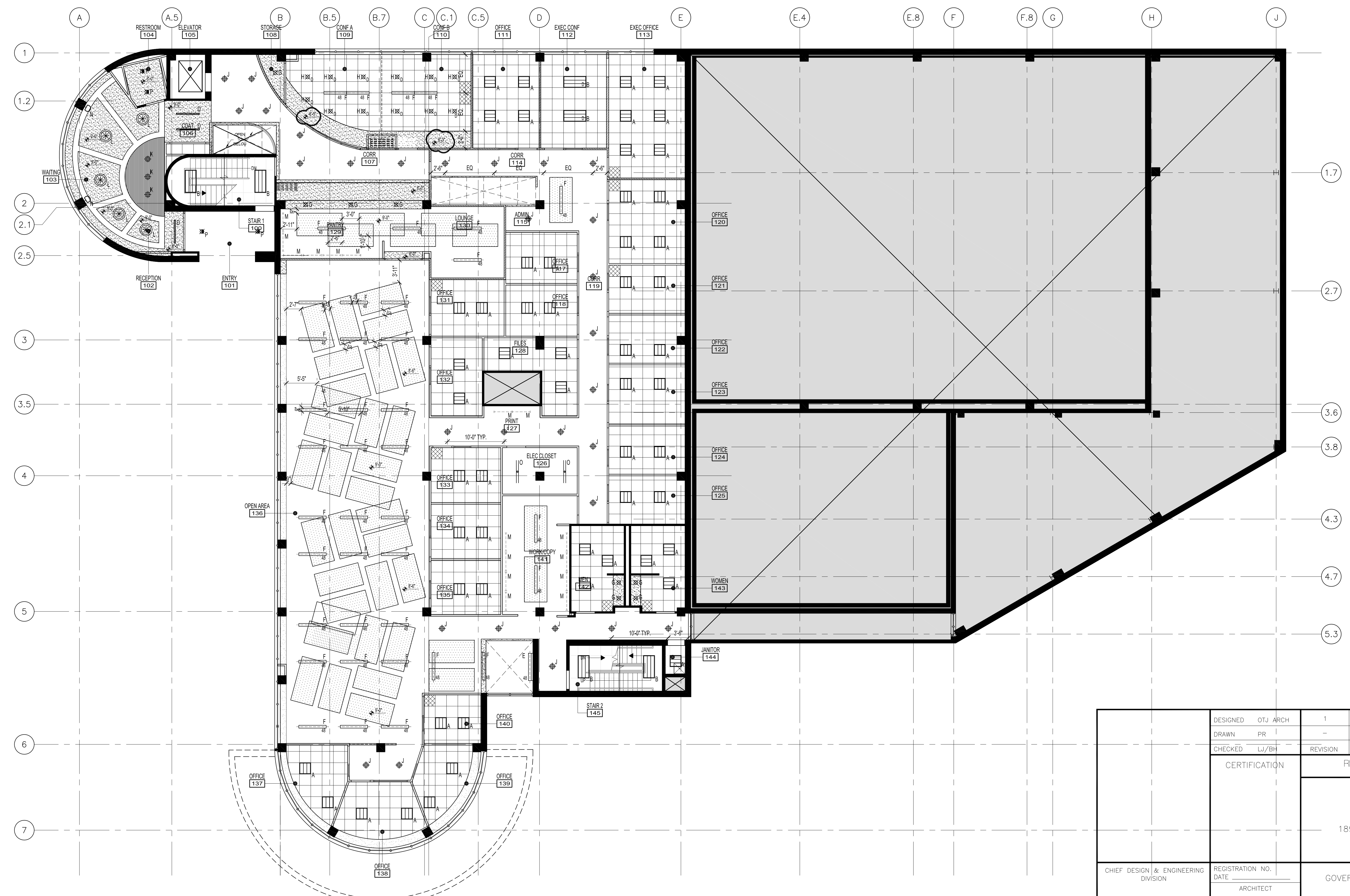
- PLUMBING NOTES**
- REFER TO POWER PLANS AND ELECTRICAL ENGINEERING DRAWINGS FOR LIGHTING POWER AND CONTROL NOTES AND REQUIREMENTS.
 - COORDINATE MOUNTING OF PENDANT LIGHTS ON UNISTRUT WITH ARCHITECT AND MEP ENGINEERS IN THE FIELD, IN RELATION TO SOUNDOUT LOCATIONS.
 - GC TO INCLUDE PRICE TO REMOVE AND REINSTALLATION OF EXISTING PIPE GRID FOR REWORK OF MECH.
 - GC TO ADD NEW CATWALK AND LADDER TO ALLOW FOR HVAC PENETRATIONS AS REQUIRED BY UL DESIGN GUIDELINES WITH MEP ENGINEER FOR EXACT LOCATION.
 - CEILING PANELS THAT ARE REMOVED DUE TO NEW ROOF CONSTRUCTION TO BE REPLACED WITH NEW TO MATCH EXISTING.

REFLECTED CEILING PLAN LEGEND

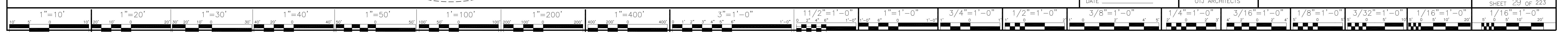
- NEW GRID AND TILE @ 9'-0" AFF.
- PATTERNED TILE DENOTES FULL TILE & LOCATION TO START CEILING GRID. ADDITIONAL DIMENSIONS PROVIDED ON PLAN, AS REQUIRED.
- EXPOSED CEILING TO UNDERSIDE OF UPPER SLAB. REMOVE ALL EXISTING UNUSED WIRING, DUCTWORK, ETC. DUCTWORK/HARDWARE TO BE AT A MINIMUM IN THIS AREA. ALL WIRING TO BE AT A MINIMUM IN THIS AREA, AND BUNDLED TO THE MINIMUM POSSIBLE CODE-COMPLIANT DIMENSIONS. PATCH ALL SLAB HOLES WITH CODE-COMPLIANT FILLER, SKIM COAT ALL ROUGH AREAS. [ALL DUCTWORK, HARDWARE, ETC. AND SLAB TO BE PAINTED CEILING WHITE.]
- NEW GWB CEILING. HEIGHT AS NOTED. INSTALL PITCON STR-063-050 TRIM REVEAL AT ALL WALL HEAD WHERE GWB CEILING AND GWB WALLS MEET. TYPICAL ALL LOCATIONS. ALL LOCATIONS TO BE PAINTED CEILING WHITE UNO.
- EXISTING GWB CEILING TO REMAIN.
- NEW 48" x 96" CERTAIN TEED ECOPHON SUSPENDED CEILING TILE TO BE INSTALLED AS NOTED. GC TO VERIFY MOUNTING HEIGHT WITH ARCHITECT IN THE FIELD.
- PROJECTOR ON STATIONARY MOUNT (PROVIDED BY AV VENDOR, INSTALLED BY GC). REFER TO ENGINEERING DRAWINGS FOR MORE INFORMATION.

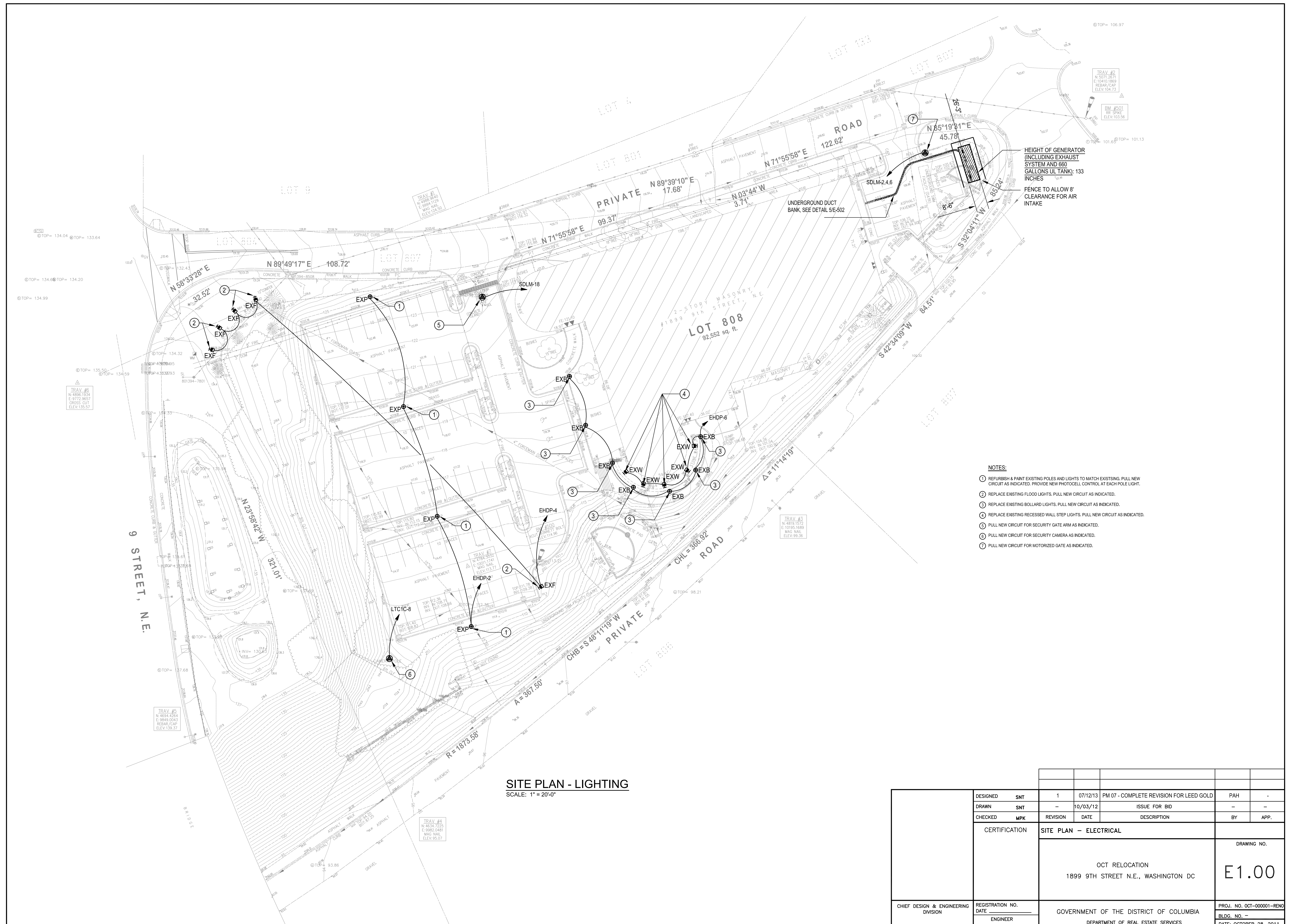
LIGHT FIXTURE SCHEDULE

FIXTURE TYPE	SYMBOL	DESCRIPTION	LAMP	MANUFACTURER	CATALOG #	REMARKS
A	[Symbol]	2x4 RECESSED DIRECT-INDIRECT	LED	CREE	CR23-33-40K	
B	[Symbol]	2x4 RECESSED DIRECT-INDIRECT	LED	CREE	CR24-40LH-40K	
B2	[Symbol]	2x4 RECESSED DIRECT-INDIRECT	LED	CREE	CR24-40LH-40K	PROVIDE EM FILTER
C	[Symbol]	2x4 RECESSED DIRECT-INDIRECT	LED	CREE	CR24-26-40K	
D	[Symbol]	4 RECESSED LINEAR	T5	AAS	BR-9-1215-1840-40V-COL-TAGE-D-CIRCUITS-D	
E	[Symbol]	4 FLUORESCENT SUSPENDED LINEAR PENDANT	NO LONGER USED	NO LONGER USED
F	[Symbol]	4 FLUORESCENT SUSPENDED LINEAR PENDANT	T5	DECO	ENVA-38-LAV	8'-0" AFF
G	[Symbol]	LED DOWNLIGHT	LED	LITON	LH40X5507-1UE-DUN-4-RA1D80WF	
H	[Symbol]	DRIMABLE LED DOWNLIGHT	LED	LITON	LH40X5507-1UE-DUN-4-RA1D80WF	
I	[Symbol]	CF WALL WASHER	NO LONGER USED	NO LONGER USED
J	[Symbol]	GENERAL PENDANT	LED	LIGHTOLIER	R01L16	16" DIA.
K	[Symbol]	DECORATIVE PENDANT	20W CFL	EUREKA	4208-CF-20-4-CAC-SC	DETERMINE MOUNTING HEIGHT WITH ARCHITECT IN THE FIELD
L	[Symbol]	DECORATIVE PENDANT	...	EUREKA	465-46-RC-82-5A	DETERMINE MOUNTING HEIGHT WITH ARCHITECT IN THE FIELD
M	[Symbol]	UNDERCABINET LIGHTING	LED	ALICO	ARB41-0706K-120-PRL	LIGHTS TO BE DIMMED. GC TO DETERMINE EXACT QUANTITY REQ.
N	[Symbol]	WALL SCONCE	20W CFL	ALERA	GR-1CFQ28-WB-PSW-EU-2BT	MOUNT PER AREA REQUIREMENTS
O	[Symbol]	SURFACE MOUNTED OR SUSPENDED FLUORESCENT STRIP	T5	DAY BRITE	HEAVY DUTY STRIP-HS-23-LUN-CGA	SURFACE MOUNT @ OCT. SUSPENDED @ OPEN CEILING
P	[Symbol]	SHOWER MODULE/MET LOCATION DOWNLIGHT	TT CFL	LIGHTOLIER	8091 CFLW	
Q	[Symbol]	WALL MOUNTED VANITY LIGHTS	100W INC	THOMAS LIGHTING	SL7425H BRUSHED NICKEL	
R	[Symbol]	DRIMABLE TRACK LIGHTING	LED	LITON	LITON14-W481-W INTEGRATED DIMMER DRIVER	INCLUDE TRACKS AS REQUIRED AND AS INDICATED ON PLAN
S	[Symbol]	SURFACE MOUNTED OR SUSPENDED FLUORESCENT STRIP	T5	HUBBELL	WC-4-2-28	SUSPENDED @ OPEN CEILING



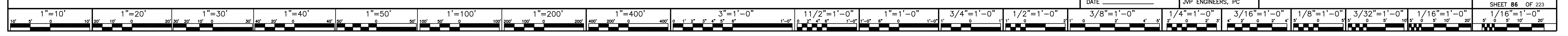
DESIGNED	OTJ ARCH	1	7/12/13	PM 07 - COMPLETE LIGHTING REVISION			
DRAWN	PR	-	10/03/12	ISSUE FOR BID			
CHECKED	LJ/BH	REVISION	DATE	DESCRIPTION	BY	APP.	
CERTIFICATION		REFLECTED CEILING PLAN - GROUND				DRAWING NO.	
		OCT RELOCATION				1-A4.0	
		1899 9TH STREET N.E., WASHINGTON DC				PROJ. NO. OCT-000001-RENO	
CHIEF DESIGN & ENGINEERING DIVISION		REGISTRATION NO. DATE		GOVERNMENT OF THE DISTRICT OF COLUMBIA		BLDG. NO. -	
		ARCHITECT		DEPARTMENT OF REAL ESTATE SERVICES		DATE: OCTOBER 28, 2011	
DATE		OTJ ARCHITECTS				SHEET 29 OF 223	



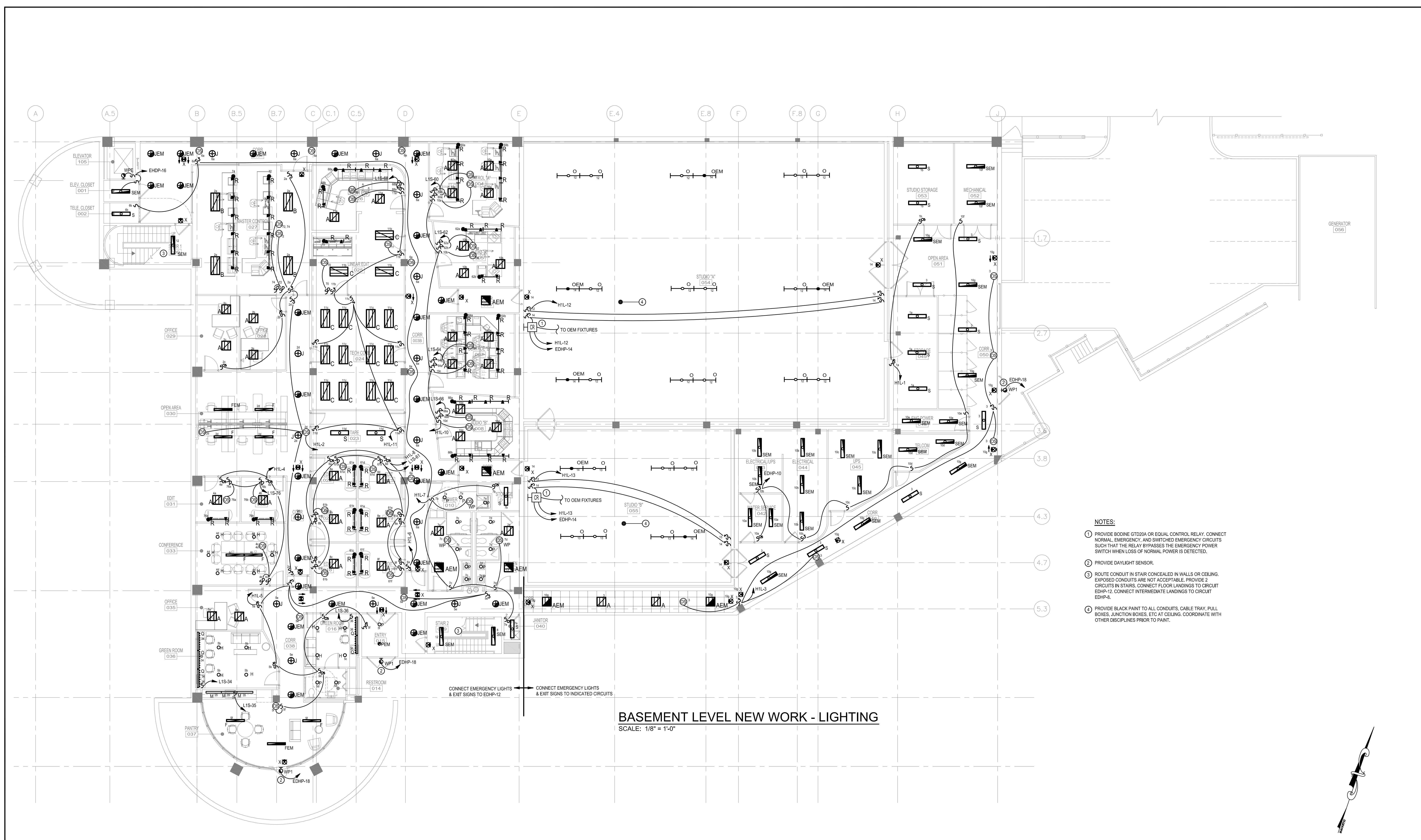


- NOTES:**
- ① REFURBISH & PAINT EXISTING POLES AND LIGHTS TO MATCH EXISTING. PULL NEW CIRCUIT AS INDICATED. PROVIDE NEW PHOTOCELL CONTROL AT EACH POLE LIGHT.
 - ② REPLACE EXISTING FLOOD LIGHTS. PULL NEW CIRCUIT AS INDICATED.
 - ③ REPLACE EXISTING BOLLARD LIGHTS. PULL NEW CIRCUIT AS INDICATED.
 - ④ REPLACE EXISTING RECESSED WALL STEP LIGHTS. PULL NEW CIRCUIT AS INDICATED.
 - ⑤ PULL NEW CIRCUIT FOR SECURITY GATE ARM AS INDICATED.
 - ⑥ PULL NEW CIRCUIT FOR SECURITY CAMERA AS INDICATED.
 - ⑦ PULL NEW CIRCUIT FOR MOTORIZED GATE AS INDICATED.

SITE PLAN - LIGHTING
SCALE: 1" = 20'-0"

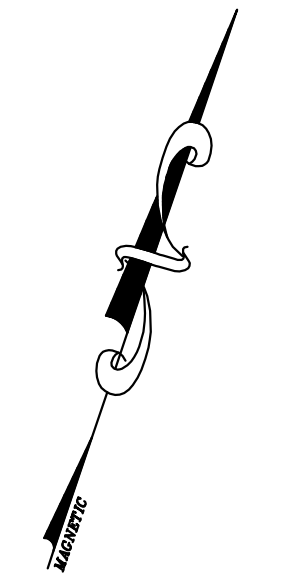


DESIGNED	SNT	1	07/12/13	PM 07 - COMPLETE REVISION FOR LEED GOLD	PAH	-	
DRAWN	SNT	-	10/03/12	ISSUE FOR BID	-	-	
CHECKED	MPK	REVISION	DATE	DESCRIPTION	BY	APP.	
CERTIFICATION		SITE PLAN - ELECTRICAL				DRAWING NO.	
		OCT RELOCATION 1899 9TH STREET N.E., WASHINGTON DC				E1.00	
CHIEF DESIGN & ENGINEERING DIVISION	REGISTRATION NO.	GOVERNMENT OF THE DISTRICT OF COLUMBIA				PROJ. NO. OCT-000001-RENO	
	DATE	DEPARTMENT OF REAL ESTATE SERVICES				BLDG. NO. -	
	ENGINEER					DATE: OCTOBER 28, 2011	
	DATE	JVP ENGINEERS, PC				SHEET 86 OF 223	

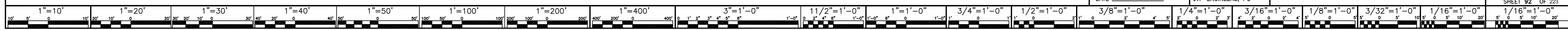


BASEMENT LEVEL NEW WORK - LIGHTING
SCALE: 1/8" = 1'-0"

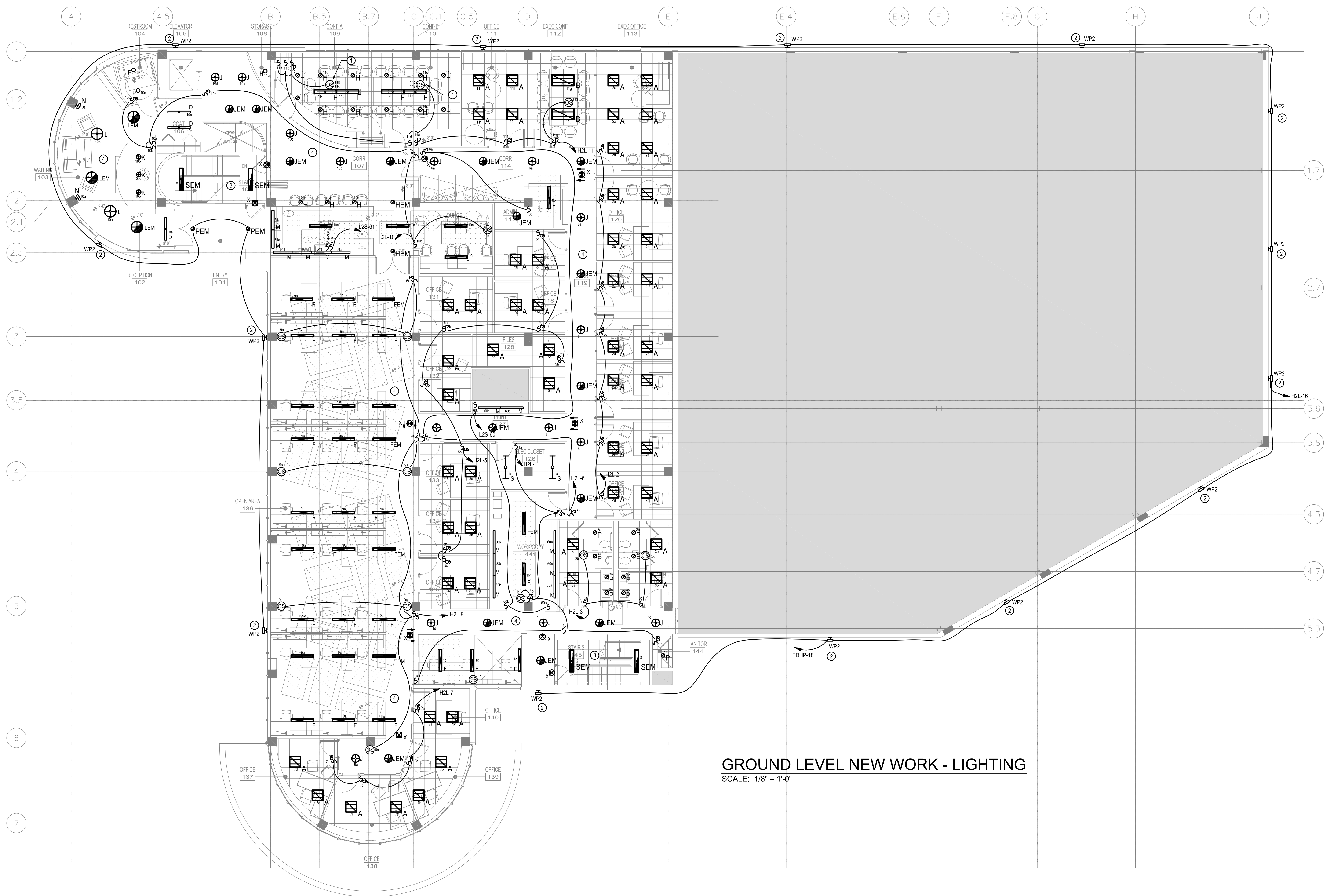
- NOTES:**
- 1 PROVIDE BODINE GTD20A OR EQUAL CONTROL RELAY. CONNECT NORMAL, EMERGENCY, AND SWITCHED EMERGENCY CIRCUITS SUCH THAT THE RELAY BYPASSES THE EMERGENCY POWER SWITCH WHEN LOSS OF NORMAL POWER IS DETECTED.
 - 2 PROVIDE DAYLIGHT SENSOR.
 - 3 ROUTE CONDUIT IN STAIR CONCEALED IN WALLS OR CEILING. EXPOSED CONDUITS ARE NOT ACCEPTABLE. PROVIDE 2 CIRCUITS IN STAIRS. CONNECT FLOOR LANDINGS TO CIRCUIT EDHP-12. CONNECT INTERMEDIATE LANDINGS TO CIRCUIT EDHP-8.
 - 4 PROVIDE BLACK PAINT TO ALL CONDUITS, CABLE TRAY, PULL BOXES, JUNCTION BOXES, ETC AT CEILING. COORDINATE WITH OTHER DISCIPLINES PRIOR TO PAINT.



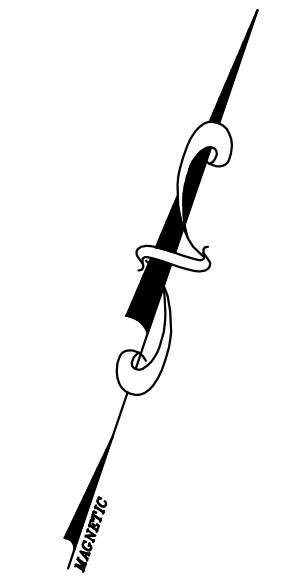
DESIGNED	SNT	1	07/12/13	PM 07 - COMPLETE REVISION FOR LEED GOLD	PAH	-	
DRAWN	SNT	-	10/03/12	ISSUE FOR BID	-	-	
CHECKED	MPK	REVISION	DATE	DESCRIPTION	BY	APP.	
CERTIFICATION		BASEMENT LEVEL NEW WORK - LIGHTING				DRAWING NO.	
		OCT RELOCATION 1899 9TH STREET N.E., WASHINGTON DC				E1.1.1	
CHIEF DESIGN & ENGINEERING DIVISION	REGISTRATION NO. DATE	GOVERNMENT OF THE DISTRICT OF COLUMBIA DEPARTMENT OF REAL ESTATE SERVICES				PROJ. NO. OCT-00001-RENO BLDG. NO. - DATE: OCTOBER 28, 2011 SHEET 92 OF 223	
DATE	JVP ENGINEERS, PC						



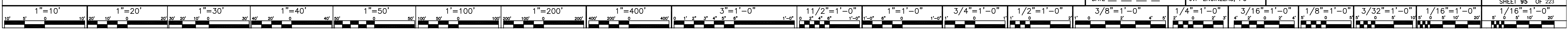
- NOTES:**
- 1 PROVIDE OCCUPANCY SENSOR TO CONTROL BOTH INDICATED CIRCUIT SWITCH LEGS.
 - 2 ROUTE EXTERIOR LIGHTING CIRCUIT CONCEALED IN WALL OR CEILING 2#10AWG + 1#10GND IN 1/2" C. EXPOSED CONDUIT IS NOT ALLOWED.
 - 3 ROUTE CONDUIT IN STAIR CONCEALED IN WALLS OR CEILING. EXPOSED CONDUITS ARE NOT ACCEPTABLE. EXCEPT MAY REUSE EXISTING EXPOSED CONDUIT ABOVE GROUND FLOOR. PROVIDE 2 CIRCUITS IN STAIRS. CONNECT FLOOR LANDINGS TO CIRCUIT EDHP-8. CONNECT INTERMEDIATE LANDINGS TO CIRCUIT EDHP-8.
 - 4 UNLESS OTHERWISE NOTED, CONNECT ALL EGRESS LIGHTING AND EXIT SIGNS ON THIS FLOOR TO CIRCUIT EDHP-8.



GROUND LEVEL NEW WORK - LIGHTING
SCALE: 1/8" = 1'-0"



DESIGNED	SNT	1	07/12/13	PM 07 - COMPLETE REVISION FOR LEED GOLD	PAH	-	
DRAWN	SNT	-	10/03/12	ISSUE FOR BID	-	-	
CHECKED	MPK	REVISION	DATE	DESCRIPTION	BY	APP.	
CERTIFICATION		GROUND LEVEL NEW WORK - LIGHTING				DRAWING NO.	
		OCT RELOCATION 1899 9TH STREET N.E., WASHINGTON DC				E1.2.1	
CHIEF DESIGN & ENGINEERING DIVISION	REGISTRATION NO.	GOVERNMENT OF THE DISTRICT OF COLUMBIA				PROJ. NO. OCT-000001-RENO	
DATE	ENGINEER	DEPARTMENT OF REAL ESTATE SERVICES				BLDG. NO. -	
	JVP ENGINEERS, PC					DATE: OCTOBER 28, 2011	
						SHEET 95 OF 223	

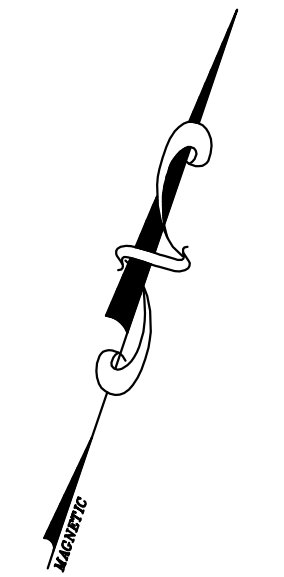


GENERAL NOTES:
 1. FOR MECHANICAL CONNECTIONS, SEE EQUIPMENT SCHEDULE ON DRAWING E6.02.

- NOTES:**
1. PROVIDE JUNCTION BOX FOR LIGHTING SIGNAGE AND CONNECT TO TIME CLOCK. SEE DETAIL 4E5.02.
 2. CONNECT ROOF LIGHTING HOME RUN THROUGH TIME CLOCK. SEE DETAIL 4E5.02.
 3. PROVIDE POWER CONNECTION FOR PIPING HEAT TRACE. COORDINATE EXACT LOCATION ON THE FIELD. 2#12AWG + #413GND IN 1/2".
 4. PROVIDE POWER CONNECTION TO RECEPTACLE AND LIGHT FIXTURE IN AIR HANDLING UNIT. COORDINATE EXACT LOCATION WITH INSTALLER PRIOR TO ROUGH-IN. 2#12 AWG + 1#12 GND IN 3/4".
 5. PROVIDE LIGHTING SWITCH WITH WEATHERPROOF ENCLOSURE FOR SIGNAGE SWITCH. COORDINATE EXACT LOCATION IN FIELD PRIOR TO INSTALLATION.
 6. ABOVE GROUND FLOOR, REUSE EXISTING EXPOSED CONDUIT IN STAIR. PROVIDE 2 CIRCUITS IN STAIRS, CONNECT FLOOR LANDINGS TO CIRCUIT EHPD-12. CONNECT INTERMEDIATE LANDINGS TO CIRCUIT EHPD-8.



ROOF PLAN NEW WORK - ELECTRICAL
 SCALE: 1/8" = 1'-0"



DESIGNED	SNT	07/12/13	PM 07 - LIGHTING REVISION FOR LEED GOLD	PAH	-
DRAWN	SNT/YC	10/03/12	ISSUE FOR BID	-	-
CHECKED	MPK	REVISION	DATE	DESCRIPTION	BY
CERTIFICATION		ROOF PLAN NEW WORK - ELECTRICAL			
OCT RELOCATION 1899 9TH STREET N.E., WASHINGTON DC					DRAWING NO. E1.3.1
CHIEF DESIGN & ENGINEERING DIVISION	REGISTRATION NO. DATE	GOVERNMENT OF THE DISTRICT OF COLUMBIA DEPARTMENT OF REAL ESTATE SERVICES			PROJ. NO. OCT-00001-RENO BLDG. NO. - DATE: OCTOBER 28, 2011 SHEET 98 OF 223

