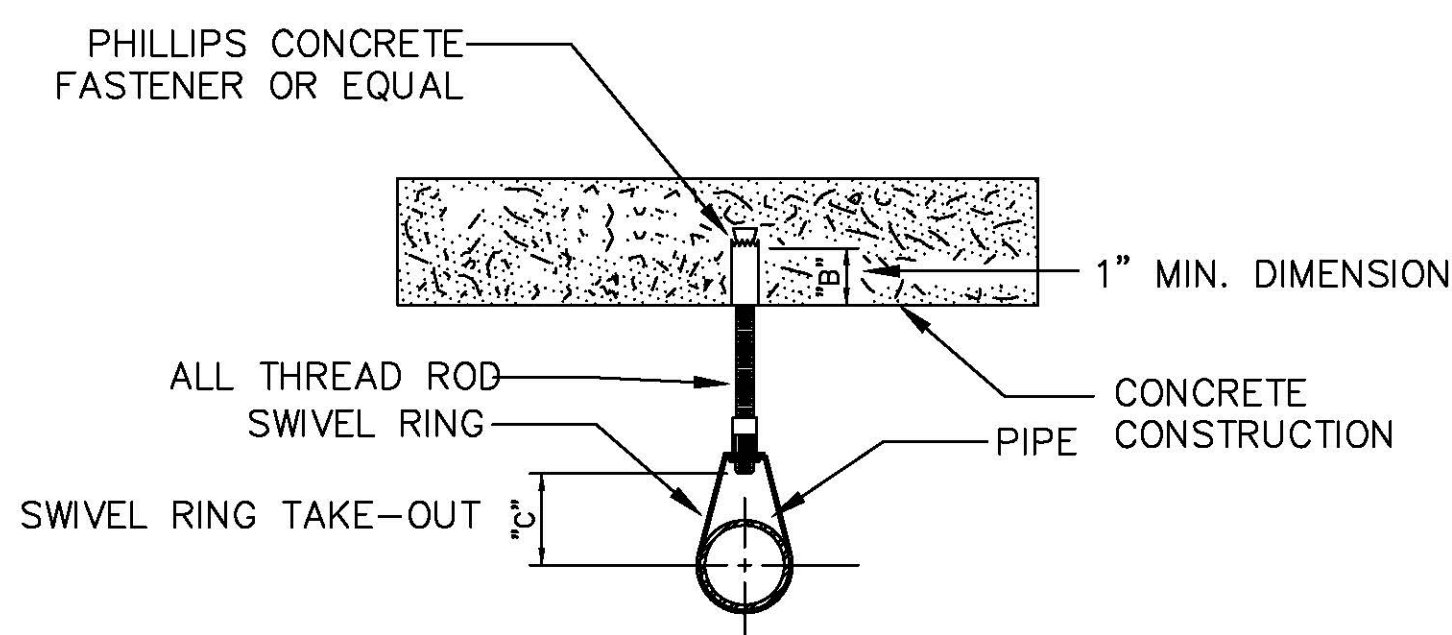


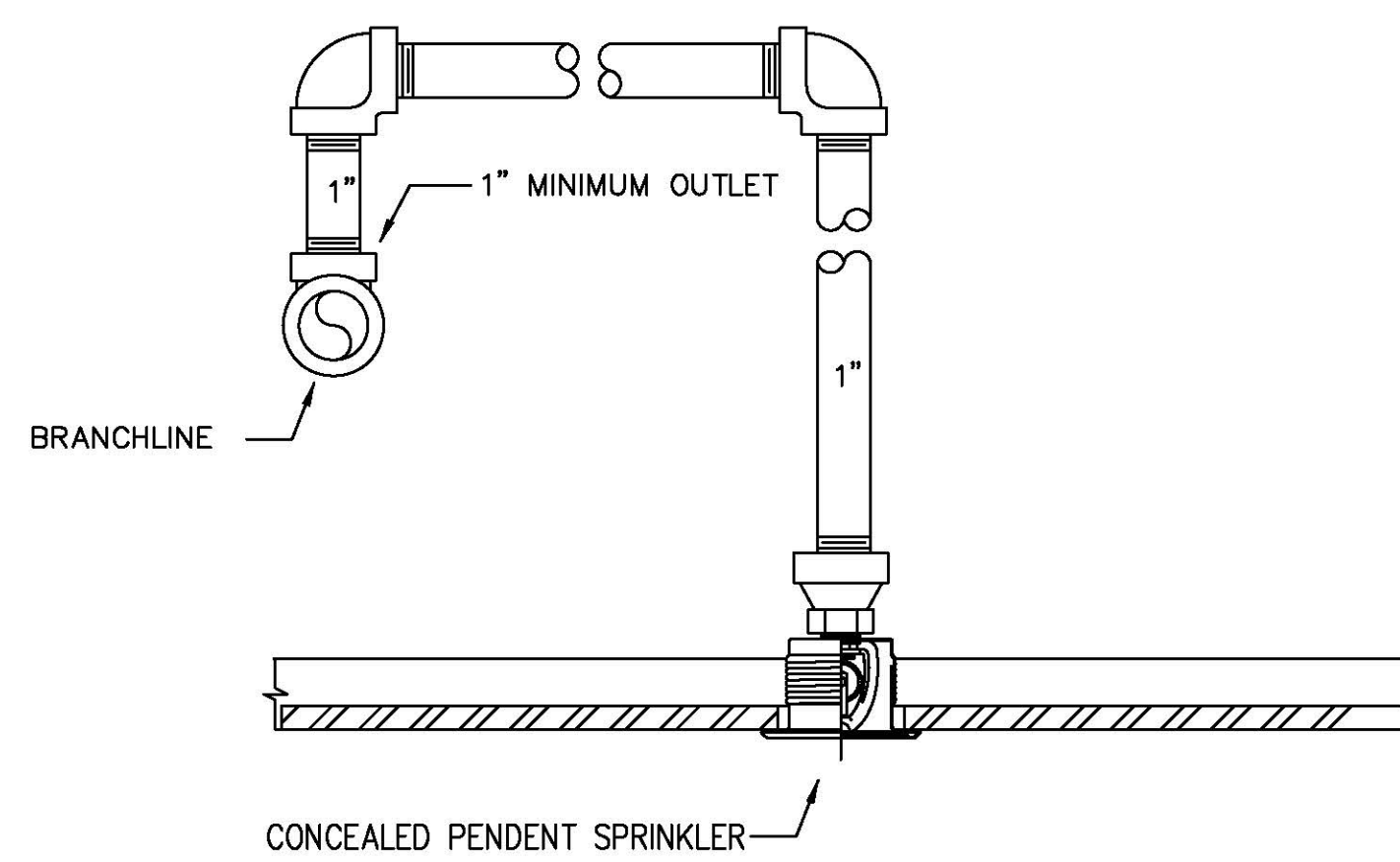
Attachment FA-26



PIPE SIZE	ROD SIZE	TYPE OF FASTENER	MIN. 'C' DIM.	MAX. 'C' DIM.
3/4"			1/2"	1 5/8"
1"			5/8"	1 3/4"
1 1/4"	3/8"	1 - 3/8 x 1 17/32" PHILLIPS SNAP-OFF	13/16"	1 7/8"
1 1/2"			15/16"	2"
2"			1 3/16"	2 3/8"
2 1/2"			1 7/16"	2 3/4"
3"	1/2"	1 - 1/2 x 2 1/32" PHILLIPS SNAP-OFF	1 3/4"	3 1/4"
3 1/2"			2"	3 5/8"
4"	5/8"	1 - 5/8 x 2 15/32" PHILLIPS SNAP-OFF	2 1/4"	3 7/8"
			2 3/4"	4 3/4"

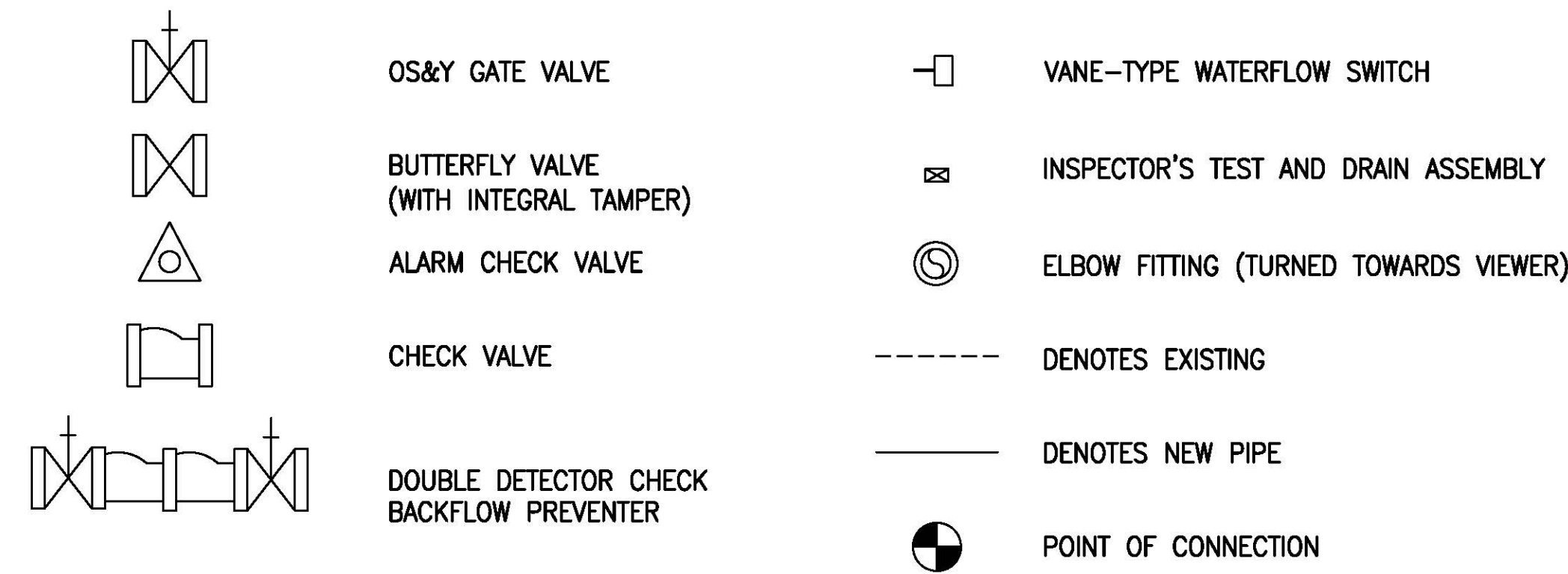
1 SNAP-OFF SHELL/SWIVEL LOOP
SCALE: NONE

NOTE: CONCEALED SPRINKLERS SHALL BE USED IN ALL COMPLETED AREAS WITH FINISHED CEILINGS.



2 SPRINKLER ARMOVER/DROP DETAIL
SCALE: NONE

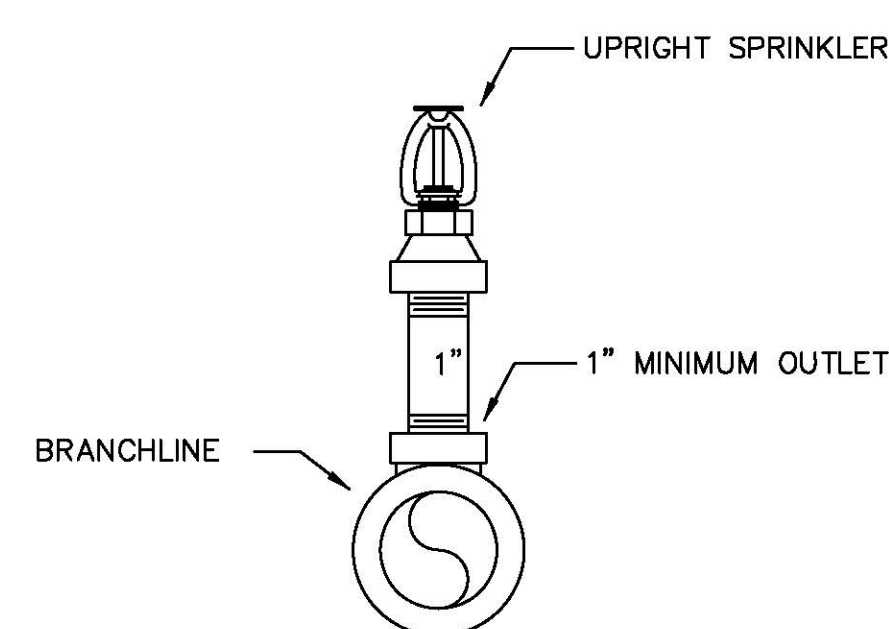
LEGEND



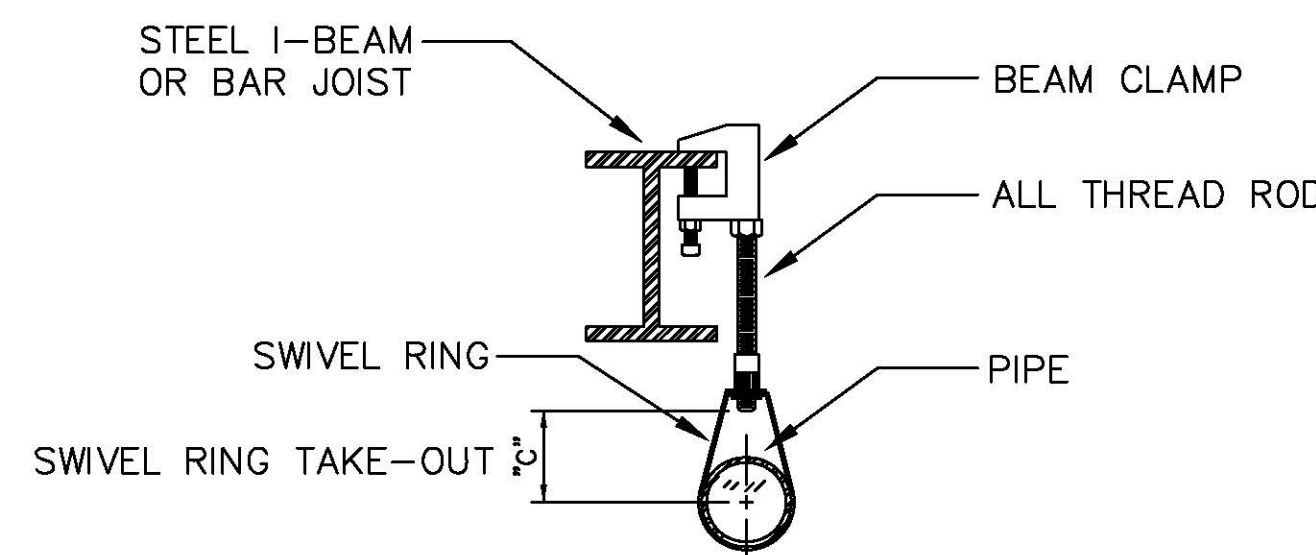
KEYNOTES

- EXISTING SPRINKLER RISER (INCLUDING ALARM CHECK VALVE) TO BE DEMOLISHED BETWEEN THE POINT OF CONNECTIONS AS SHOWN ON THE NEW WORK PLANS.
- DEMOLISH THE EXISTING WATER MOTOR GONG AND ASSOCIATED PIPING.
- NEW 6-INCH FEED TO GROUND FLOOR SPRINKLER RISER.
- EXISTING 6-INCH FEED TO GROUND FLOOR SPRINKLERS.
- PIPE THE INSPECTOR'S TEST AND DRAIN ASSEMBLIES TO THE EXISTING FLOOR DRAIN.
- 4-INCH TO FIRE DEPARTMENT CONNECTION
- NEW 6-INCH DOUBLE DETECTOR CHECK BACKFLOW PREVENTER ASSEMBLY.

NOTE: UPRIGHT SPRINKLERS SHALL BE USED IN ALL AREAS WITH OPEN CEILINGS.

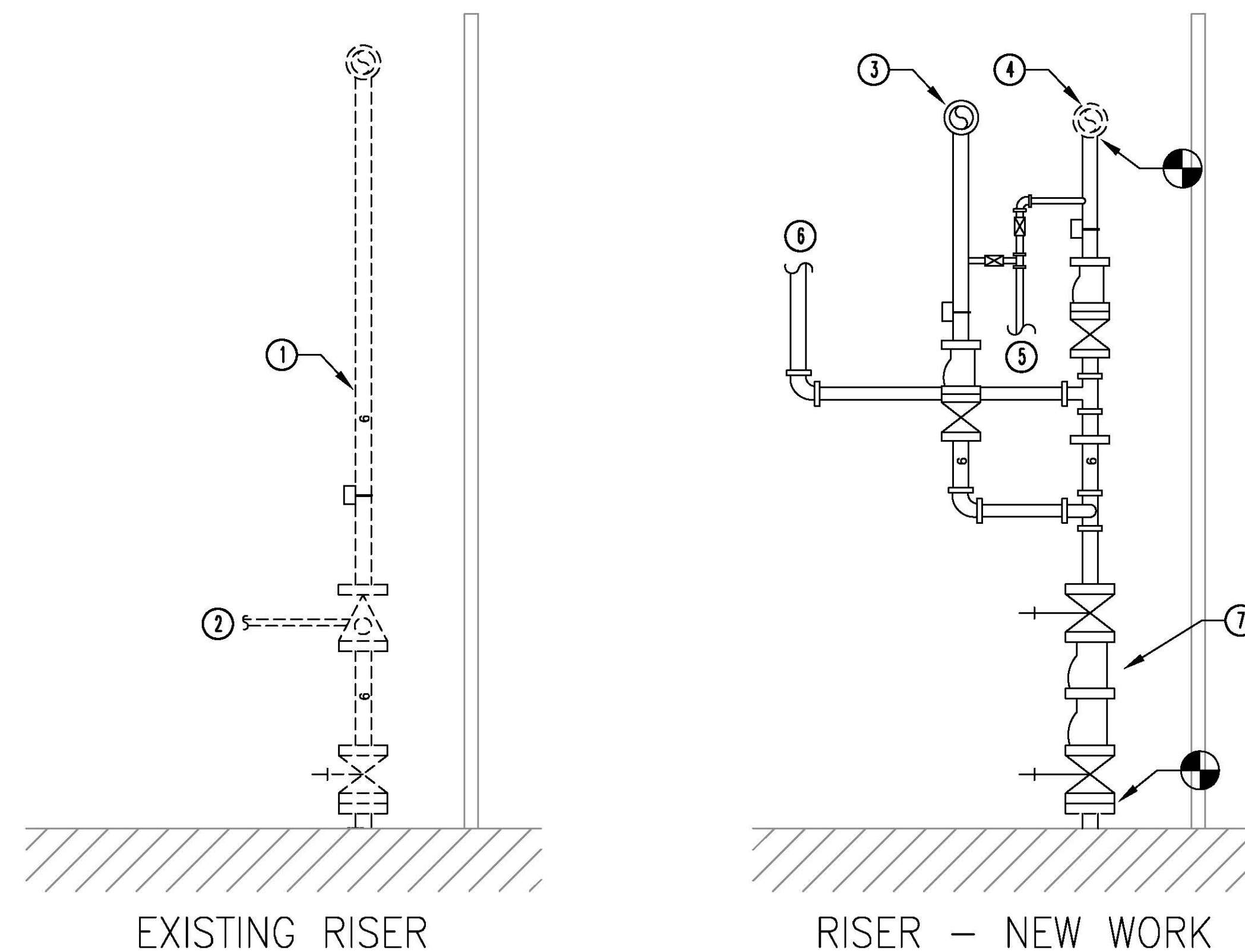


3 SPRING-UP DETAIL
SCALE: NONE

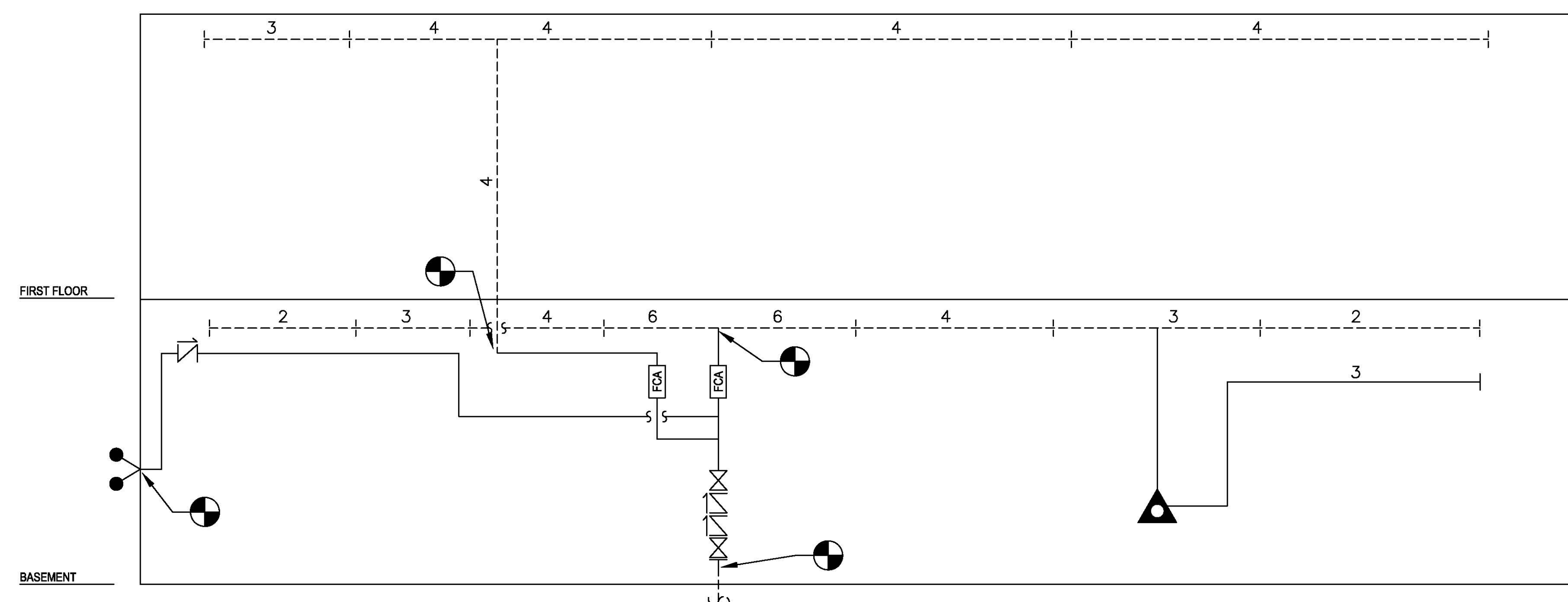


PIPE SIZE	ROD SIZE	MIN. 'C' DIM.	MAX. 'C' DIM.
3/4"		1/2"	1 5/8"
1"		5/8"	1 3/4"
1 1/4"		13/16"	1 7/8"
1 1/2"		15/16"	2"
2"	3/8"	1 3/16"	2 3/8"
2 1/2"		1 7/16"	2 3/4"
3"		1 3/4"	3 1/4"
3 1/2"		2"	3 5/8"
4"		2 1/4"	3 7/8"
5"	1/2"	2 3/4"	4 3/4"
6"		3 5/16"	5 1/2"
8"		4 5/16"	6 3/4"

4 BEAM CLAMP/SWIVEL LOOP
SCALE: NONE

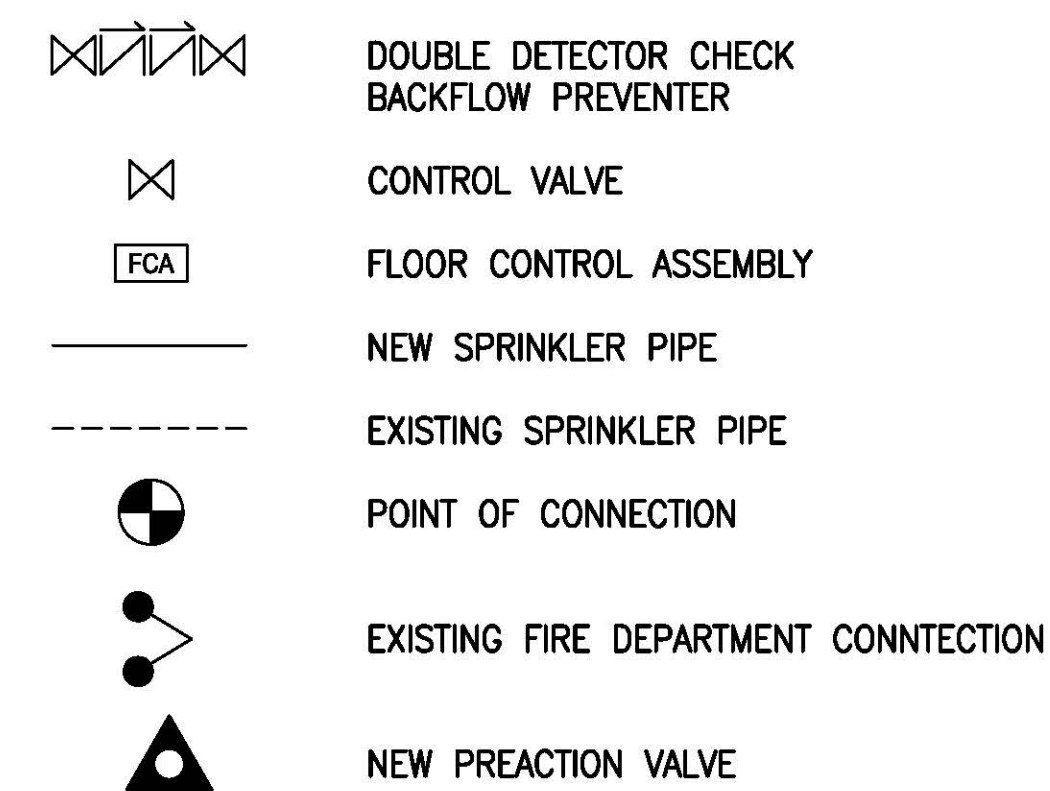


5 INCOMING SERVICE SPRINKLER RISER
SCALE: NONE



6 SPRINKLER RISER DIAGRAM
SCALE: NONE

LEGEND



GENERAL NOTES:

- PIPING SHOWN ON THE RISER DIAGRAM DEPICT EXISTING SPRINKLER MAINS. CONTRACTOR SHALL INSTALL NEW BRANCHLINE PIPING AND SPRINKLERS WHICH WILL BE CONNECTED TO THESE EXISTING MAINS.
- SIZE OF SPRINKLER MAINS VARY BASED ON LOCATION. GENERALLY, PIPE SIZES ARE LARGER WHERE CLOSER TO THE MAIN RISER.

DESIGNED	DCC			ISSUE FOR BID		
DRAWN	DCC		10/03/12			
CHECKED	SPW	REVISION	DATE	DESCRIPTION	BY	APP.
CERTIFICATION		FIRE PROTECTION INSTALLATION DETAILS				DRAWING NO.
		OCT RELOCATION				FP.2.1
		1899 9TH STREET N.E., WASHINGTON DC				
CHIEF DESIGN & ENGINEERING DIVISION	REGISTRATION NO.	GOVERNMENT OF THE DISTRICT OF COLUMBIA			PROJ. NO. OCT-00001-RENO	
	DATE	DEPARTMENT OF REAL ESTATE SERVICES			BLDG. NO. -	
					DATE: OCTOBER 28, 2011	
					SHEET 84 OF 223	

