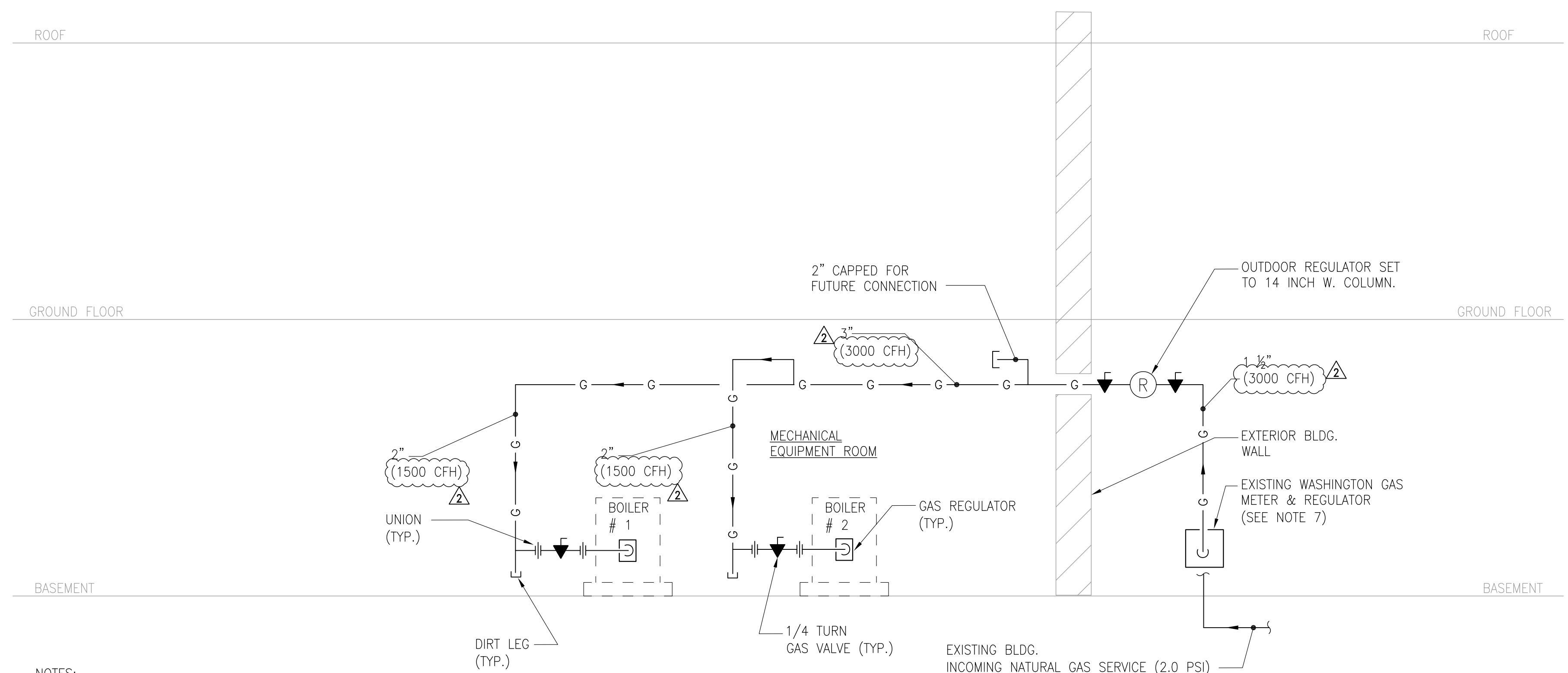


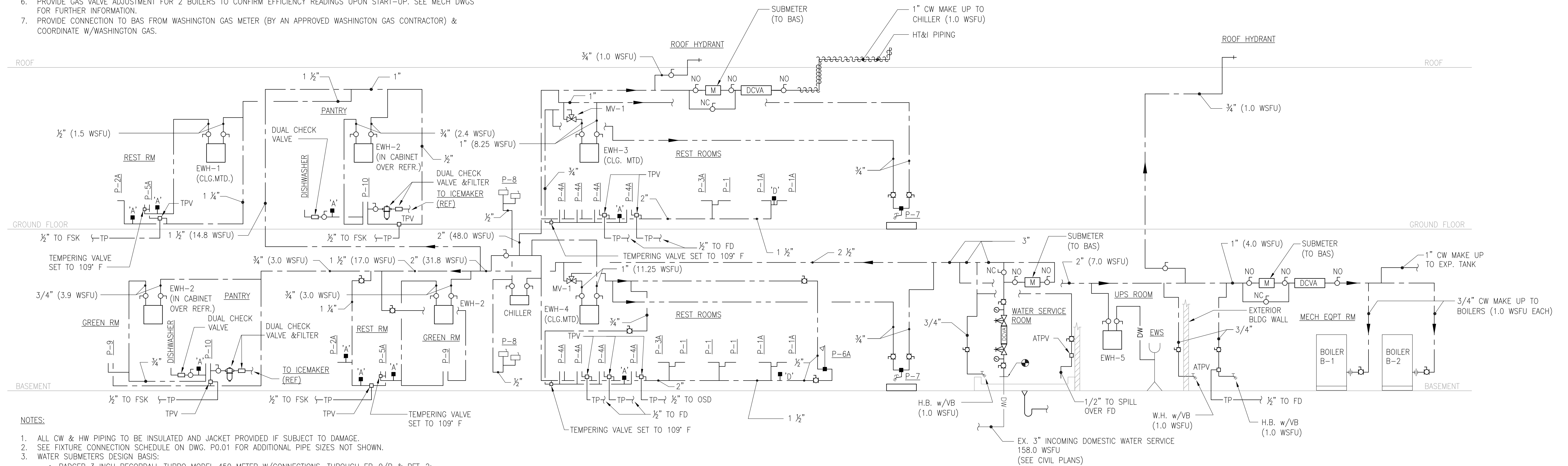
Attachment P6.01





- NOTES:**
1. PLUMBING GAS WORK BEGINS AFTER THE GAS METER, WASHINGTON GAS COMPANY TO PROVIDE THE GAS METER, REGULATOR, AND VENT. VENT WITH SCREEN IS LOCATED MINIMUM 5'-0" FROM NON-INDUCED ENTRY (I.E. INTAKE SHAFTS). BOTTOM OF VENT IS LOCATED MIN. 12" ABOVE GRADE & MAXIMUM 6'-0" ABOVE GRADE.
 2. BASIS OF DESIGN IS SCHEDULE 40 BLACK STEEL.
 3. BASIS OF DESIGN IS HYBRID PRESSURE METHOD FROM 2006 IFGC.
 4. 1st PORTION UP TO LINE REGULATOR: DESIGN BASIS = 2006 IFGC TABLE 402.4(3).
INLET PRESSURE = 2.0 PSI
PRESSURE DROP = 1.0 PSI
SPECIFIC GRAVITY = 0.60
GAS PIPE EQUIVALENT LENGTH = 20 FT (3000 CFH)
 5. 2nd PORTION AFTER LINE REGULATOR: DESIGN BASIS = 2006 IFGC TABLE 402.4(2).
INLET PRESSURE = LESS THAN 2.0 PSI
PRESSURE DROP = 0.5 INCH WATER COLUMN
SPECIFIC GRAVITY = 0.60
GAS PIPE EQUIVALENT LENGTH = 30 FT (3000 CFH)
 6. PROVIDE GAS VALVE ADJUSTMENT FOR 2 BOILERS TO CONFIRM EFFICIENCY READINGS UPON START-UP. SEE MECH DWGS FOR FURTHER INFORMATION.
 7. PROVIDE CONNECTION TO BAS FROM WASHINGTON GAS METER (BY AN APPROVED WASHINGTON GAS CONTRACTOR) & COORDINATE W/WASHINGTON GAS.

1 GAS RISER DIAGRAM
NTS



- NOTES:**
1. ALL CW & HW PIPING TO BE INSULATED AND JACKET PROVIDED IF SUBJECT TO DAMAGE.
 2. SEE FIXTURE CONNECTION SCHEDULE ON DWG. P0.01 FOR ADDITIONAL PIPE SIZES NOT SHOWN.
 3. WATER SUBMETERS DESIGN BASIS:
 - BADGER 3 INCH RECORDALL TURBO MODEL 450 METER W/CONNECTIONS. THROUGH ER-9/R & PFT-2; FOR INCOMING WATER SERVICE.
 - BADGER 1 INCH RECORDALL TURBO MODEL 70 METER W/CONNECTIONS. THROUGH ER-9/R & PFT-2; FOR BOTH CHILLER MAKE UP WATER & BOILER & EXP. TANK MAKE UP WATER.
 4. ALL FLOW TRANSMITTERS ARE REMOTE MOUNTED (ACCESSIBLE/READABLE LOCATION) & CONNECT TO BAS.

2 DOMESTIC WATER RISER DIAGRAM
NTS

| | | | | | |
|-------------------------------------|-------------------------------|--|---------------|---------------------------|-----------------|
| DESIGNED | HAI/RM | 11/12/12 | BID REVISIONS | - | - |
| DRAWN | HA/RM | 10/03/12 | ISSUE FOR BID | - | - |
| CHECKED | VR | REVISION DATE | DESCRIPTION | BY | APP. |
| CERTIFICATION | | PLUMBING RISER DIAGRAMS - GAS AND DOMESTIC WATER | | | DRAWING NO. |
| | | OCT RELOCATION 1899 9TH STREET N.E., WASHINGTON DC | | | P6.01 |
| CHIEF DESIGN & ENGINEERING DIVISION | REGISTRATION NO. DATE | GOVERNMENT OF THE DISTRICT OF COLUMBIA DEPARTMENT OF REAL ESTATE SERVICES | | PROJ. NO. OCT-000001-RENO | BLDG. NO. - |
| DATE | ENGINEER JVP ENGINEERS, PC | | | DATE: OCTOBER 28, 2011 | SHEET 71 OF 223 |

