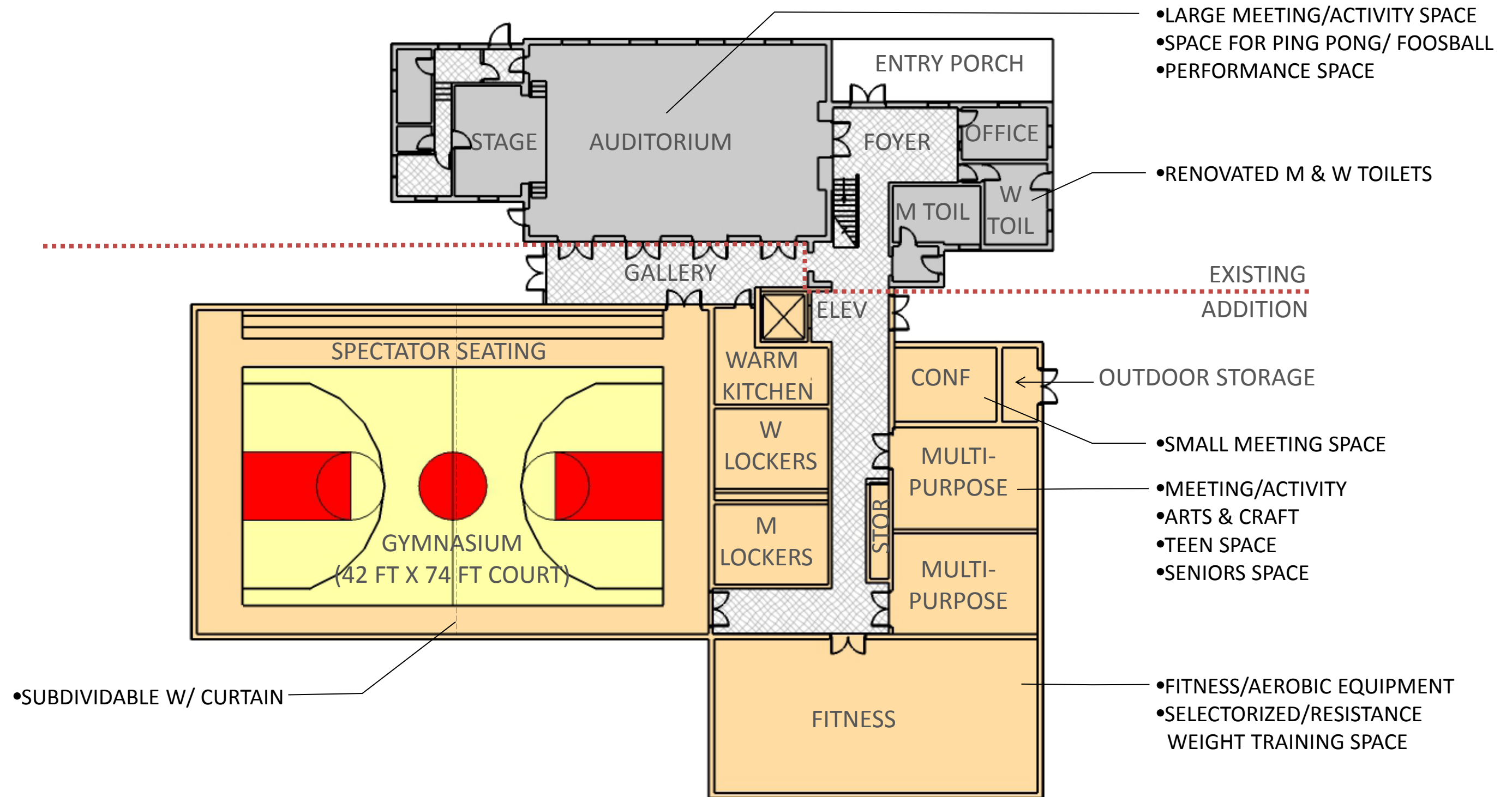


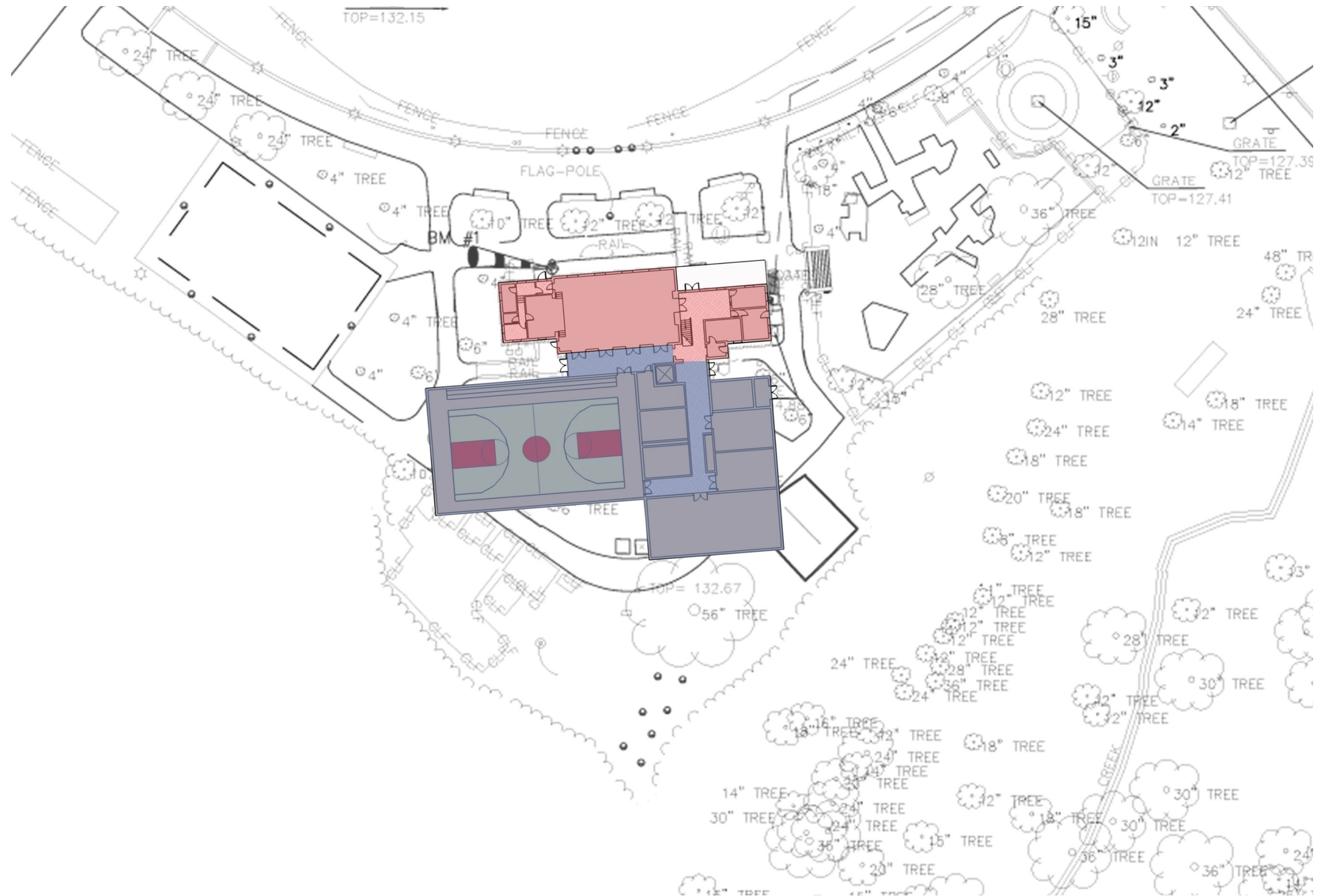
COMMUNITY SITE IMPROVEMENT MEETING

March 26, 2015



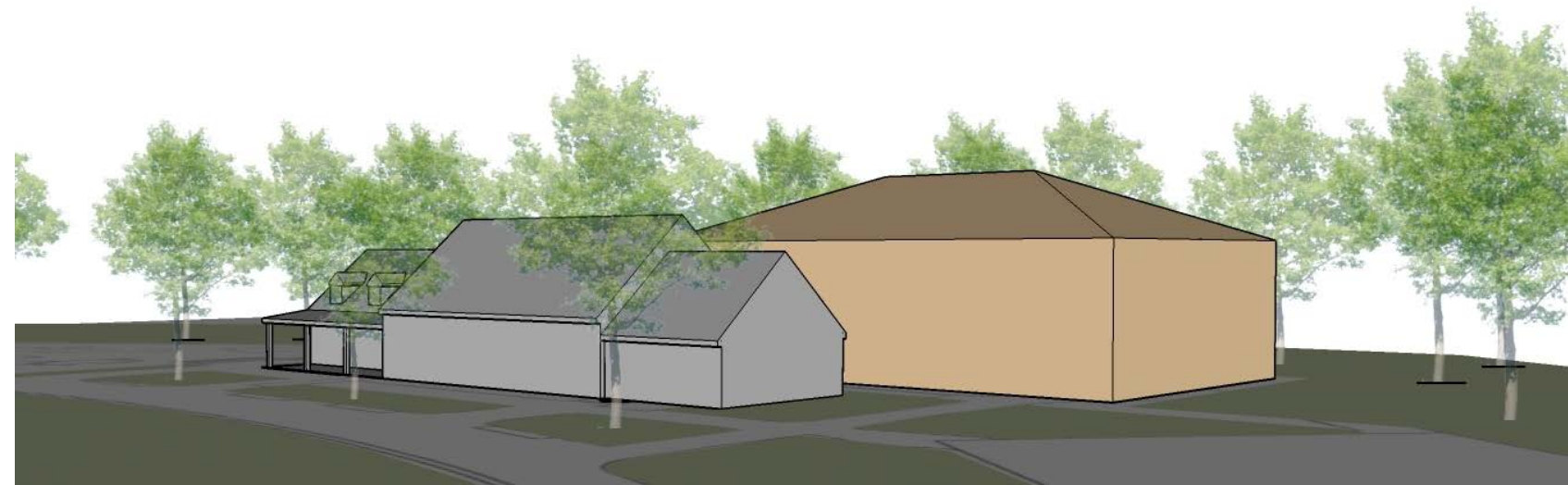
PALISADES COMMUNITY CENTER
Washington, D.C.



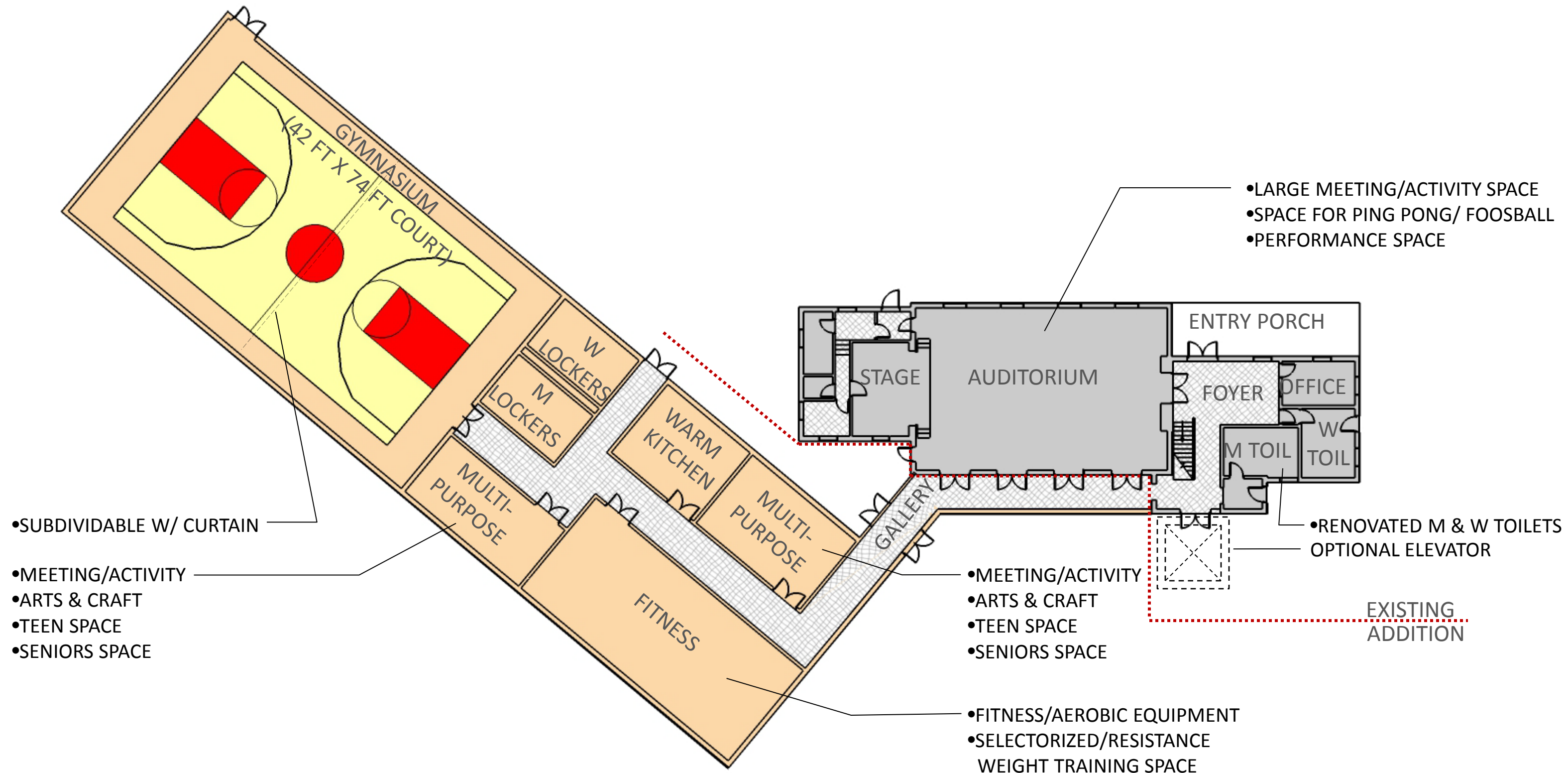


PALISADES COMMUNITY CENTER

Washington, D.C.



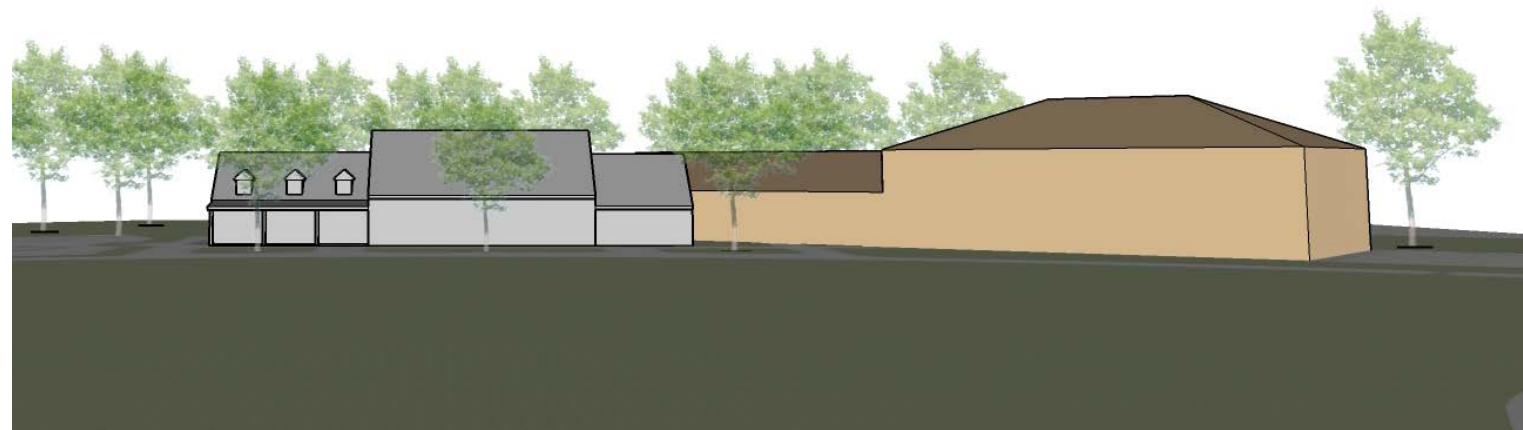
PALISADES COMMUNITY CENTER
Washington, D.C.





PALISADES COMMUNITY CENTER

Washington, D.C.



- Based on Google Earth, there are about 34 spaces on-site. By adding additional parking around the edges, another 12-15 spaces **might** be feasible.
- The site is surrounded by RPP Zone 3 parking permit which allows residential parking and non-Zone 3 residents to park under 2 hours. Additionally, there is a mix of RPP parking and metered parking on MacArthur Blvd to the north.
- In order to address parking encroachment from non-Zone 3 residents, parking could be better enforced, along with the potential for providing Resident Only parking, typically on one side of the street. This could be implemented on Edmunds Place, Dana Place, and Sherier Place NW, pushing non-residents to end up looking for parking on MacArthur Blvd.
- **A strategy to address arriving teams and departing teams is to potentially separate back-to-back games by 30 minutes, and to limit the number of teams playing at the same time.**
- Their scope will look to identify peak parking activity and utilization during the Spring sports season, especially on Saturdays. They will also identify non-Zone 3 parkers parking on the neighborhood streets during the survey days.
- For league games, we may require issuing parking permits for the spaces within the lot to help manage the condition.

Proposed Landscaping and ADA Ramp at Front of Building

