

Square 1415 (Government Ownership) (1)

Palisades playground - Res. 504

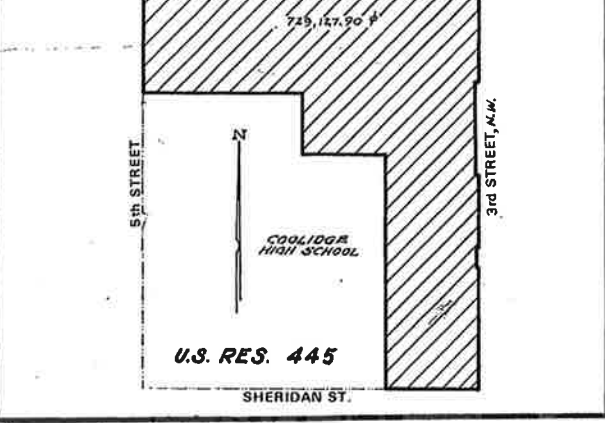
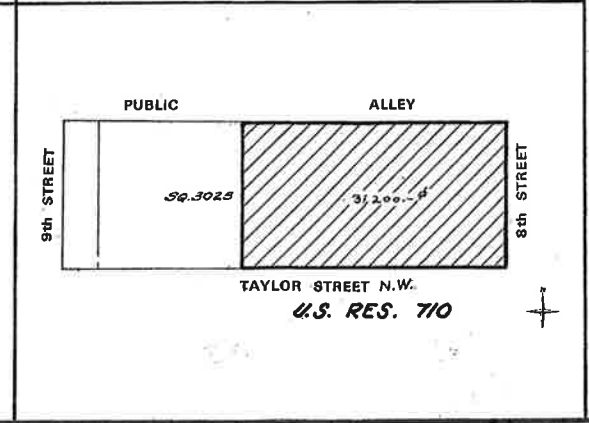
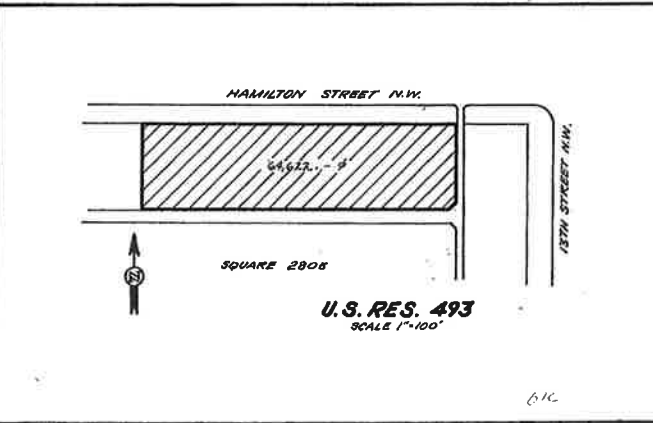
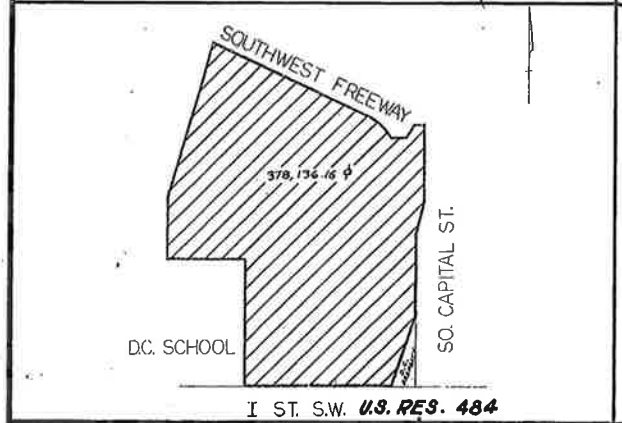
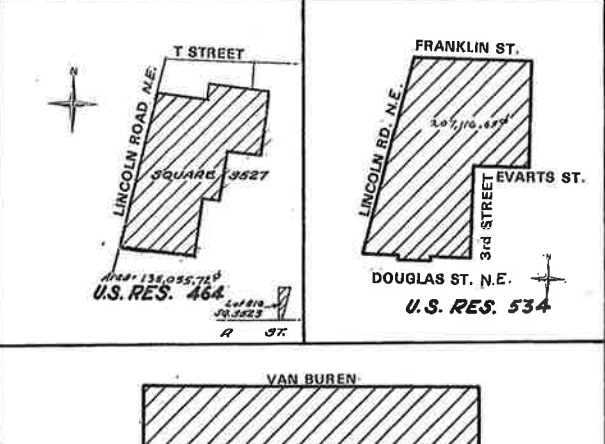
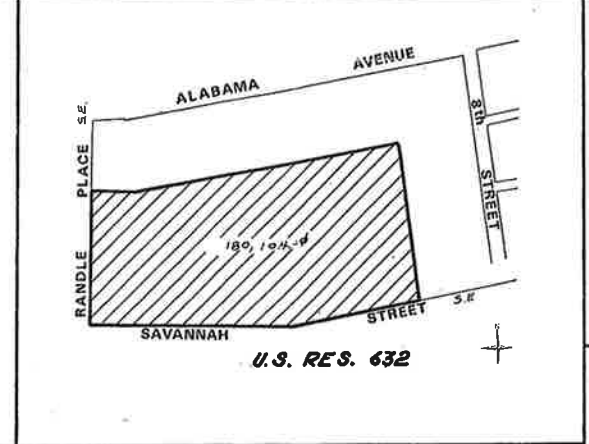
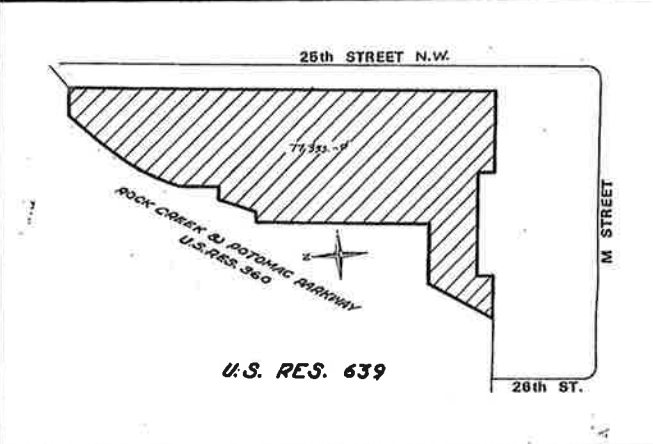
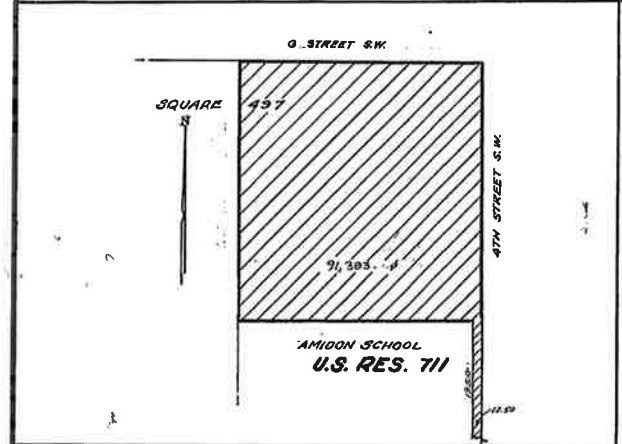
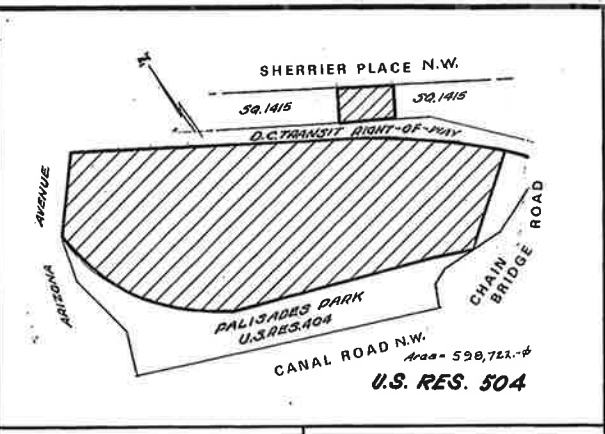
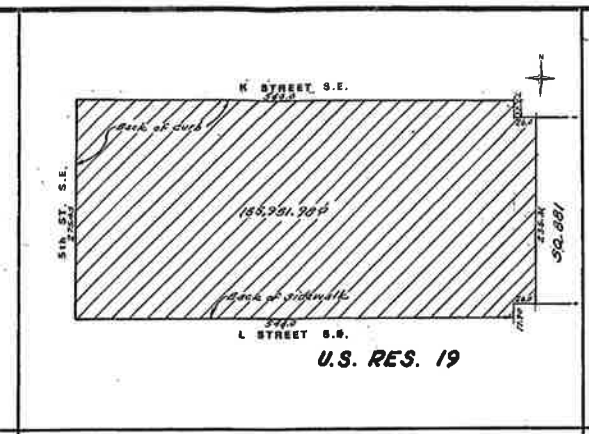
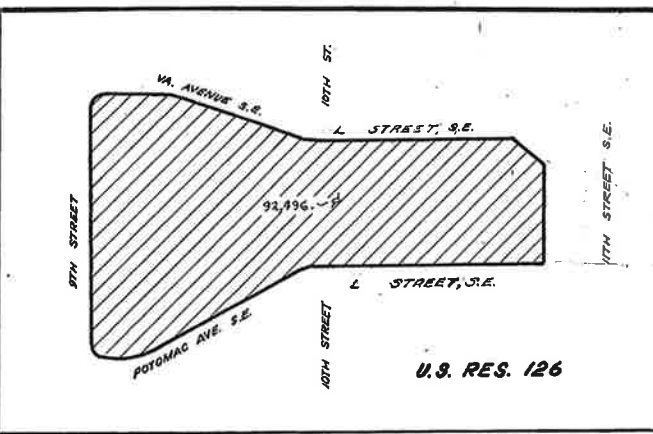
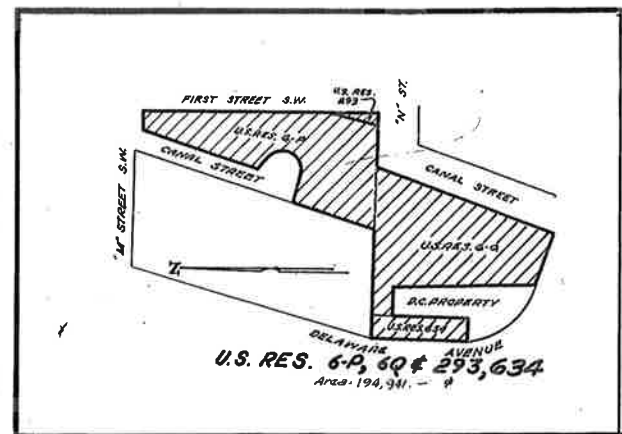
pt. trans. from NPS to DC for recreation and related purposes
area at Arizona Ave., Sherrier Pl., Canal & Chain Bridge Rd
N.W. (Res. 404 & 504) 158/11

C

4528 = 9AM

2-11-35

4528 = 9AM



TRANSFER OF JURISDICTION

National Capital Planning Commission
Washington, D.C. (July 15, 1971)
In accordance with Section 8-115 of the Code of Law for the District of Columbia and Public Law No. 92-592, 92nd Congress, approved July 19, 1972,
Recommended by vote of the Commission.

Department of the Interior
National Park Service
Washington, D.C. (7-12-1971)
In accordance with Section 8-115 of the Code of Law for the District of Columbia, I hereby transfer to the jurisdiction of the District of Columbia, U.S. Reservations 6-P, 6-Q, 19, 126, 293, 464, 484, 493, 504, 534, 632, 639, 710 and 711 as shown hereon thus: [diagram] for recreation and related purposes.

Russell S. Williams
General Superintendent
Office of National Capital Parks

Washington, D.C. July 8, 1971
In accordance with Section 8-115 of the Code of Law for the District of Columbia, and Section 402 (b)(1) of Reorganization Plan No. 3 of 1962, the transfer of jurisdiction ordered hereon are hereby approved for recreation and related purposes,
By direction of the District of Columbia Council

David H. Schwartz
Secretary of the Council

Office of the Surveyor of the District of Columbia
Washington, D.C. October 18, 1971
I certify that the plat shown hereon is correct and is hereby approved for record in this office.

J. L. Koch
Surveyor of the District of Columbia

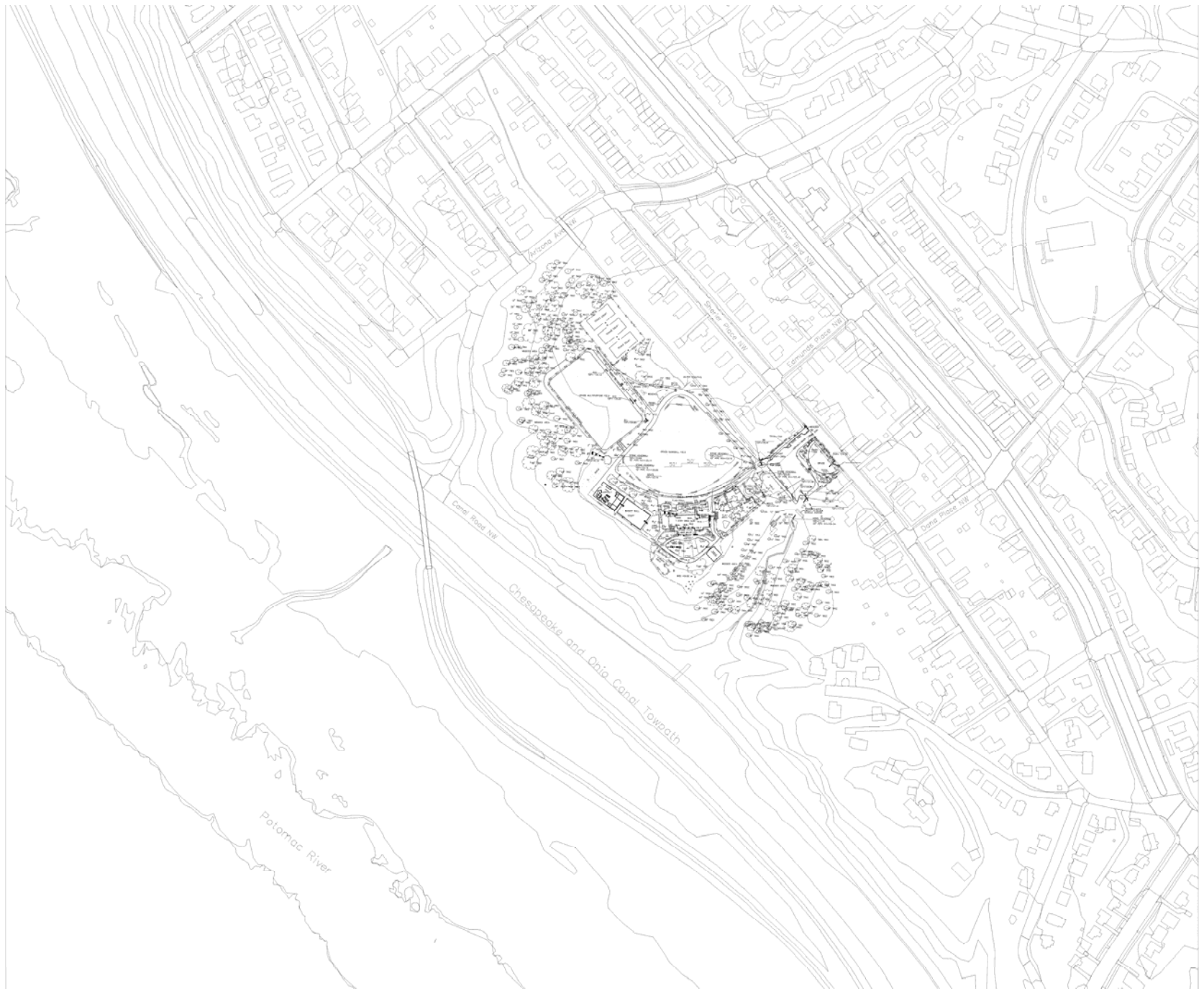
SURVEYOR'S OFFICE, D.C.

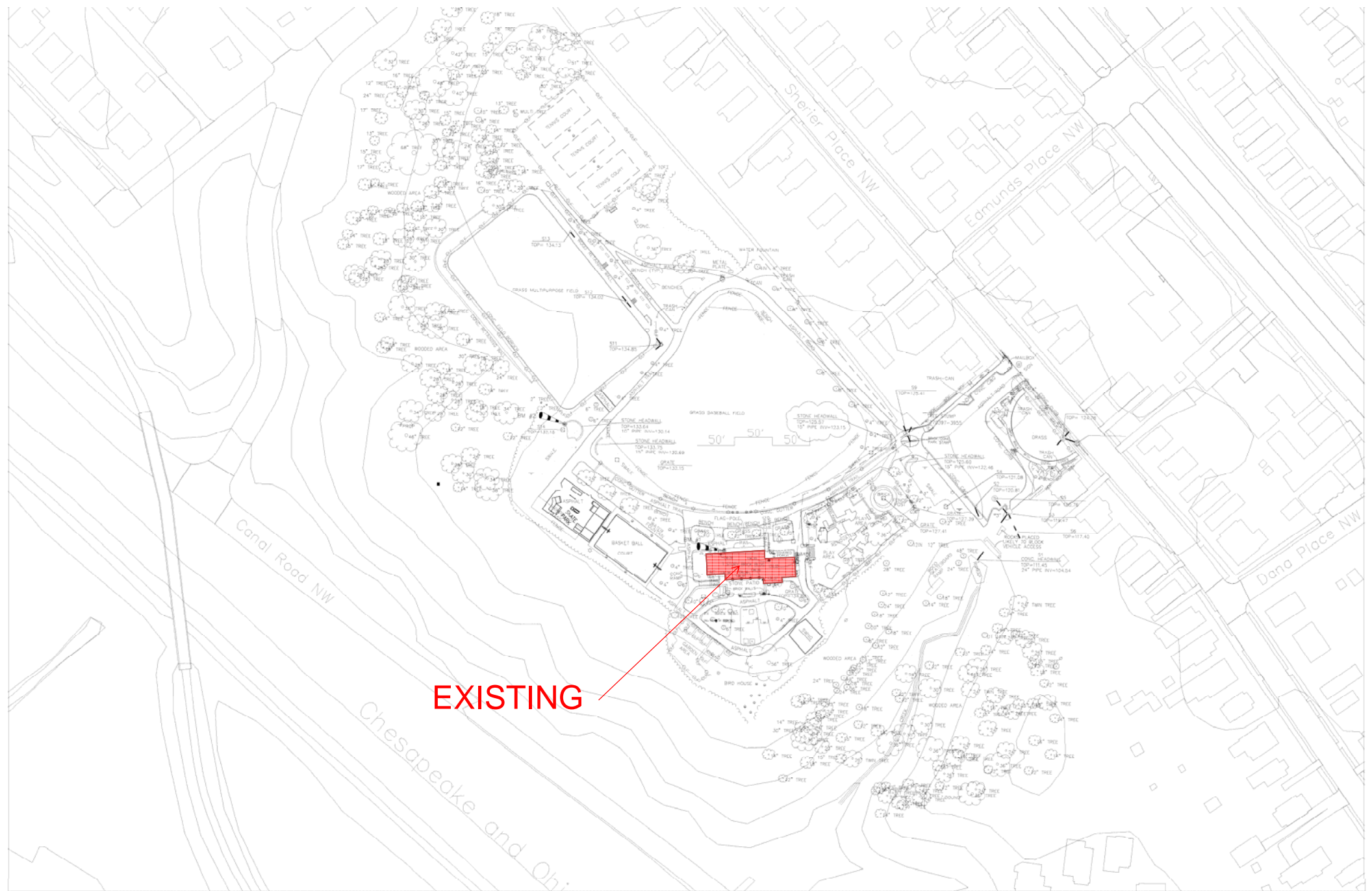
Made for Dept. of General Services
Drawn by [initials] - Checked by [initials] (10/22/71)
Recorded in Book 159 page 11
File No. 2070-210 MAP No. 7524

MAP = 2254

2-11-35

MAP = 2254





EXISTING

