



DC DEPARTMENT OF GENERAL SERVICES CALL TO ARTISTS

DC Department of General Services - Sustainability + Energy Division (DGS-SE) is issuing a Request for Qualifications (RFQ) to engage individual artists and artistic teams (“Artist”) to respond to this Call for Artists for the development a new, original permanent work of art at the Penn Center (326 R Street NW, Washington DC 20002).

VISION

Cities tell stories with the trails and footpaths that meander through them.

These urban-scaled arteries are worn with the stories of those who traverse them: connecting the past, present, and the future of this complex and always changing urban landscape; connecting neighborhoods and the spaces in between; connecting their residents and visitors, and inviting them to be active.

**Trails invite discovery. Trails invite wanderlust. Trails are alive.
They tell a story we’re eager to celebrate.**

DGS-SE envisions a mural or other work of art as the voice for that celebration -- as a beacon.

The artwork should be engaging and thought provoking to individuals of all ages, should consist of a design that is considerate of the vantage points and line-of-sight perspectives of the viewers (please see Attachment A for photographs of the site and the proposed artwork area). Note that this is a large building. On the “red” side of the building, we would like the area to be part of the composition but can consist of large planes of color (so as to not overwhelm the artist with intricate design over the entire building). The building has a history of being tagged, and we hope the art will deter vandalism and create a diverse and welcoming sense of place.

As the world moves towards intentionally creating more carbon neutral cities and neighborhoods, this unique and artful space will have an active and inspirational role to play by honoring healthy lifestyles that enable all residents to thrive and to take part in a collective, equitable, sustainable future.



About the Metropolitan Branch Trail

Bisecting the northeast quadrant of Washington, DC, the Metropolitan Branch Trail exists as an eight mile hiking and cycling pathway following in the footsteps of the historic B&O railroad. This commuting trail, extending from Silver Spring, Maryland to the National Mall, passes through numerous vibrant and historic District neighborhoods serving as an artery for commuters and outdoor enthusiasts.

About the Department of General Services

The District of Columbia Department of General Services (“DGS” or The “Department”) manages the District of Columbia real estate portfolio, which consists of approximately four hundred buildings including schools, recreation centers, police and fire stations, and various other municipal buildings. The mission of DGS is to elevate the quality of life for the District with superior construction, first-rate maintenance and expert real estate management of green state-of-the-art facilities, which foster economic growth, elevate educational environments, and create modern, vibrant communities across all of the District of Columbia.

Within The Department, DGS-SE is tasked with not only managing the District’s fixed energy and utility costs, but in demonstrating National leadership in the conservation of the local and natural resources that drive those costs. DGS-SE aggressively facilitates the creation of public environments that (a) minimize their embodied energy and life-cycle demand on local resources; as well as, (b) support the abundant, healthy and productive lives of District residents, visitors, and wildlife.

Eligibility

The competition is open to artists with five years of site-specific and/or public art experience. Artists must have demonstrated experience working with community representatives, youth, businesses and government entities. It is also important that if the artist(s) selected for the project are not already very familiar with Ward 5, they must be willing to actively engage and collaborate with local residents.

SELECTION CRITERIA & PROCESS

ROUND 1: REQUEST FOR QUALIFICATIONS

Please Email a Copy of the Following:

Professional Qualifications:

- Portfolio -- up to 10 images of previous artwork
- Current artistic resume-- highlighting experience with site-specific work and public art commissions
- Any other supporting materials such as brochures, articles, and letters of support

PLEASE SUBMIT PROFESSIONAL QUALIFICATIONS BY MARCH 7, 2016 AT 5:00 PM EST.

DGS will review all professional qualification submissions and select three artists, as finalists, to submit proposals. These top three artists will be awarded a \$500 design honorarium for final proposal submittal. The selection committee, representing diverse interests and expertise, will then review images submitted by the top three artists and choose a winner. Artists should attend the scheduled site visit. The selection committee will review the designs and may invite finalists/teams to present submission directly to the committee before (1) one finalist/team is awarded the project.



ROUND 2: FINALIST PROPOSALS

SELECTED FINALISTS: PLEASE SUBMIT THE FOLLOWING BY APRIL 25, 2016 at 5:00 PM EST:

Proposal:

- Letter of Intent -- Describe in detail your interest, qualifications and project community outreach plan
- Sketch or model of proposed artwork-- an 11" x 17" color sketch
- Project Narrative
- Itemized Budget
- Project Timeline

The following Public Art Evaluation Criteria will be used in reviewing each Finalist Proposal:

ARTISTIC CONTENT

75 Pts

- Artist's work sample and support materials (brochures, articles, letters of support, etc.) demonstrate high standards of artistic excellence within the chosen discipline(s);
- Artist(s) and/or applicant's written concept exhibits high quality, innovation and creativity
- Artist has experience with site specific public art projects/ uses personnel with demonstrated arts expertise (i.e. arts administrator, professional artists) to plan and implement artistic content;
- The described project, goals and schedule of planned activities are feasible;
- The Artist is able to incorporate environmental sustainability in his/her artwork, especially as it relates to multi-modal transportation;
- The Artist's portfolio of work demonstrates feasibility for this particular project; and
- Artwork creates a welcoming sense of place that encourages use of the trail and a healthy lifestyle

COMMUNITY ENGAGEMENT & IMPACT

15 Pts

- Proposed project provides shared learning opportunities in the District that facilitate a greater participation in the arts, relative to the artistic discipline;
- Artist demonstrates sensitivity to the cultural, ethnic and economic background of the participants and the residents of the District of Columbia;
- Project addresses significant diversity of expression and community needs;
- Project location and presentation are accessible to persons with disabilities;
- Artist demonstrates ability to work with community representatives, landscape architects, businesses, and government entities; and
- *Special consideration will be given to proposals that incorporate community involvement in a way that spearheads the inclusion of the local, related groups from conception to completion*
- *5 Pts CREDIT: Artist is a DC resident, is represented by a DC gallery or has a studio in the District*

CAPACITY & PROJECT PLAN

10 Pts

- Artist is sufficiently stable, in terms of arts expertise, organizational capacity, and financial status to implement the proposed project;
- Artist demonstrates the internal capacity to administer the project and has appropriate financial monitoring systems in place to track expenditures;
- Artist's budget information is detailed, accurate, feasible, and directly related to the project; and
- Artist has experience in producing similar public art projects

ADDITIONAL INFORMATION/REQUIREMENTS:

- The design proposal and the selection committee's recommendations will be forwarded to DGS for review and final approval. The artist whose design is approved will then enter into an agreement with DGS for final design, fabrication and installation of the artwork.
- Artist must participate in at least (1) informal training or workshop (e.g. "An Evening with the Artist").
- Artist must be willing to return to site to touch up artwork in the event of defacement or other affecting circumstances.
- The artist whose design is approved will then enter into an agreement with DGS for final design, fabrication and installation of the artwork.
- Artist should generally prep and prime the wall to protect the artwork from peeling.
- Artist must apply two coats of graffiti/UV protection to seal the artwork, to prevent peeling and fading, and to make the removal of tags easier.
- Artist must hire a DC artist assistant.

BUDGET:

The total budget is as follows: \$50,000

The indicated budget must include all artists' fees and costs associated with design, fabrication, and travel, transportation of materials to the site, insurance, permits, smoothing and priming of the site wall, graffiti/UV protection, installation and documentation of the artwork. The final budget will be reflective of the submission, possibly increasing based on individual proposals, but not to fall below \$50,000.

PROJECT TIMELINE

Project Timeline	
2/29/2016	Call/RFQ Released
3/7/2016	Submission Deadline for Professional Qualifications
3/9/2016	Top Three Artists Selected
3/23/2016	Site Tour
3/28/2016	Question Submission Deadline
3/31/2016	Responses to Questions Issued
4/19/2016	Submission Deadline for Proposals
4/25/2016	Panel Meeting to Select Finalist
4/26/2016	Finalist Announced
5/16/2016	Contract Executed
5/23/2016	Final Design, Fabrication and Installation Begins
6/23/2016	Installation Complete Deadline Goal

Please e-mail questions and submissions to Farah Albani at farah.albani@dc.gov and CC Sandy Bellamy at sandy.bellamy@dc.gov by the respective dates listed.

CALL TO ARTISTS (ATTACHMENT A) PAGE 5

SITE LOCATION:

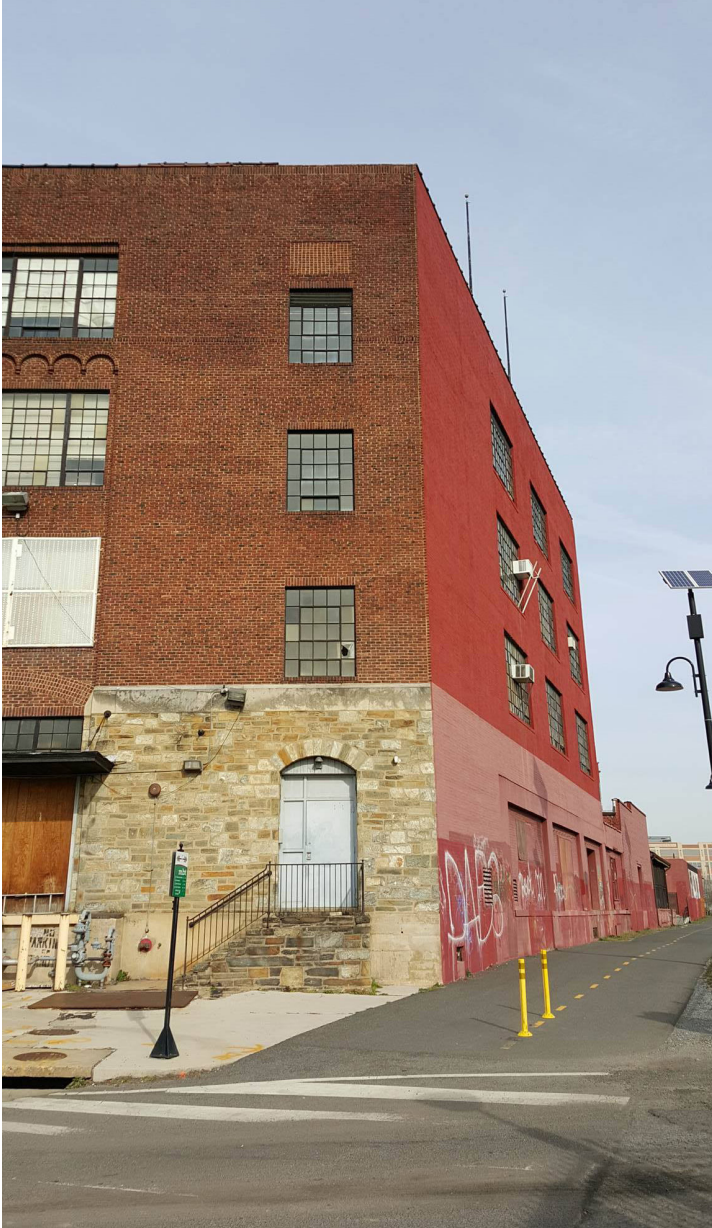
The area indicated by the dark green boundary lines is the prioritized area for the artwork however proposals that extend beyond these boundaries, so long as they remain within the area indicated by the light green boundary lines, will be considered.





METROPOLITAN BRANCH TRAIL

NORTHBOUND



SOUTHBOUND

