



DISTRICT OF COLUMBIA  
PUBLIC SCHOOLS

June 16, 2016 9AM

16 de Junio, 2016, 9AM

# Powell School Improvement Team Meeting

Mejoramiento de Powell School  
Reunión de Equipo

Don't forget to sign-in (please print)



## Agenda

### Recap of Building D Floorplan

Recapitulación del Plano del Edificio D

### Overview of Sitework and Playground Locations

Resumen del trabajo en el site

### DC City Council Approval and BZA Approval

La aprobación del Concilio de la Ciudad y la aprobación del BZA

### Overview of Front Entrance

Visión general de la Entrada Principal

### Storm Water Management Components

De Sistemas de Manejo de Aguas

### Trees

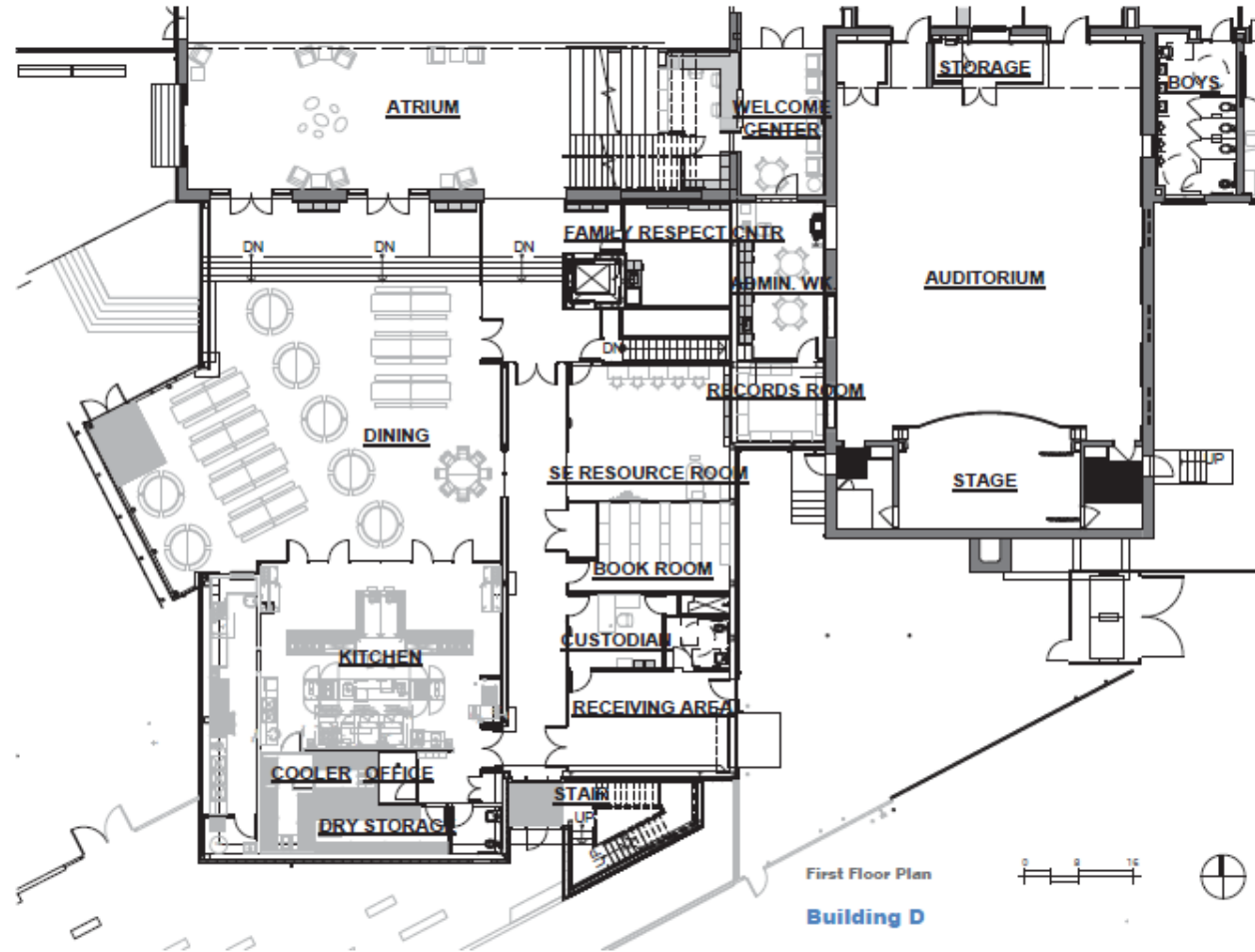
Los árboles

### Progress Photos

Fotos sobre la marcha

# Building D - 1<sup>st</sup> Floor Master Plan

Edificio D - Plan Maestro de Primer Piso



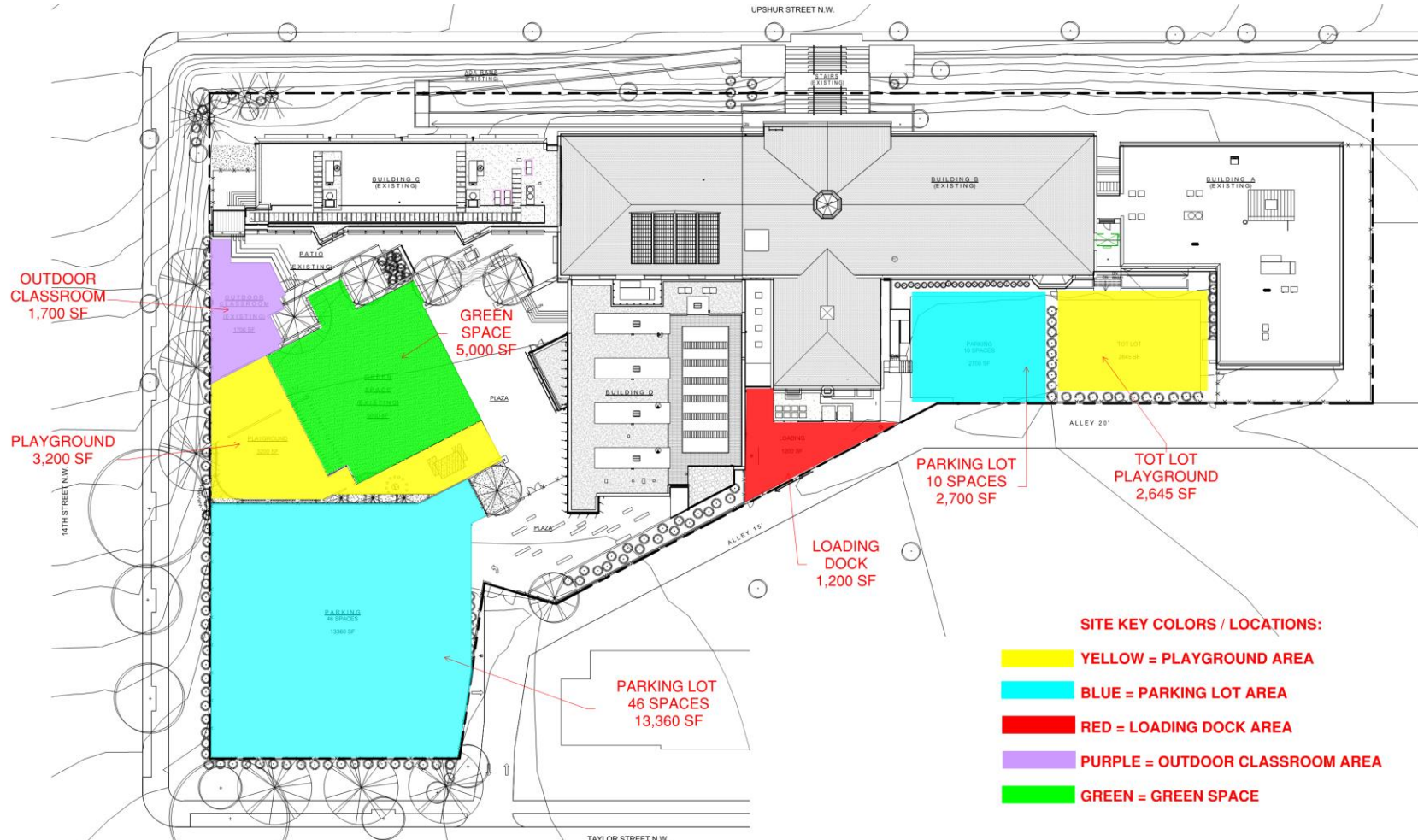
# Building D - 2<sup>nd</sup> Floor Master Plan

Edificio D - Plan Maestro de Segundo Piso



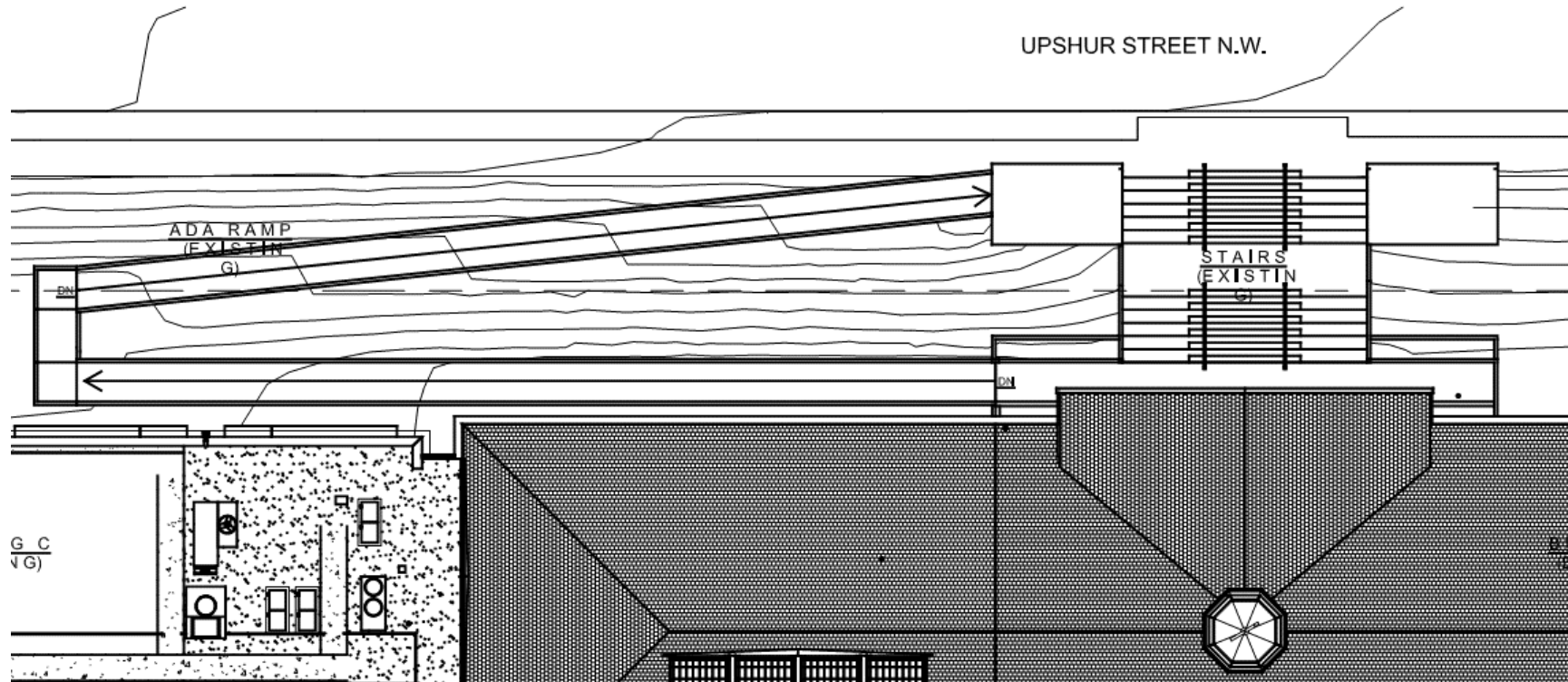
## Overview of Proposed Sitework and Playground Locations

Visión general de propuesto trabajo en el site y parque infantil ubicaciones



## Overview of Front Entrance – Projected Completion Summer 2016

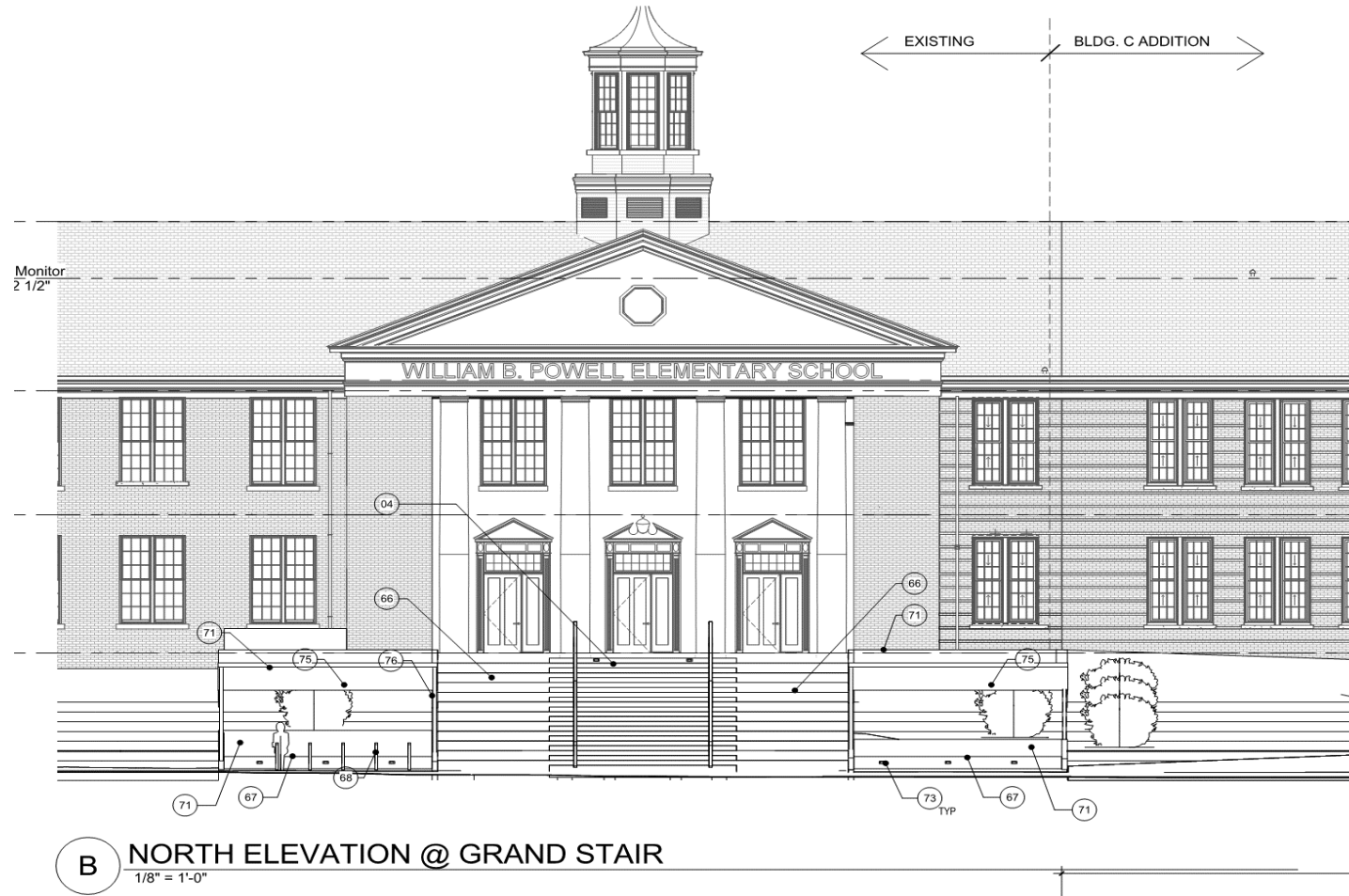
Visión general de la Entrada Principal - terminación proyectada para el verano 2016





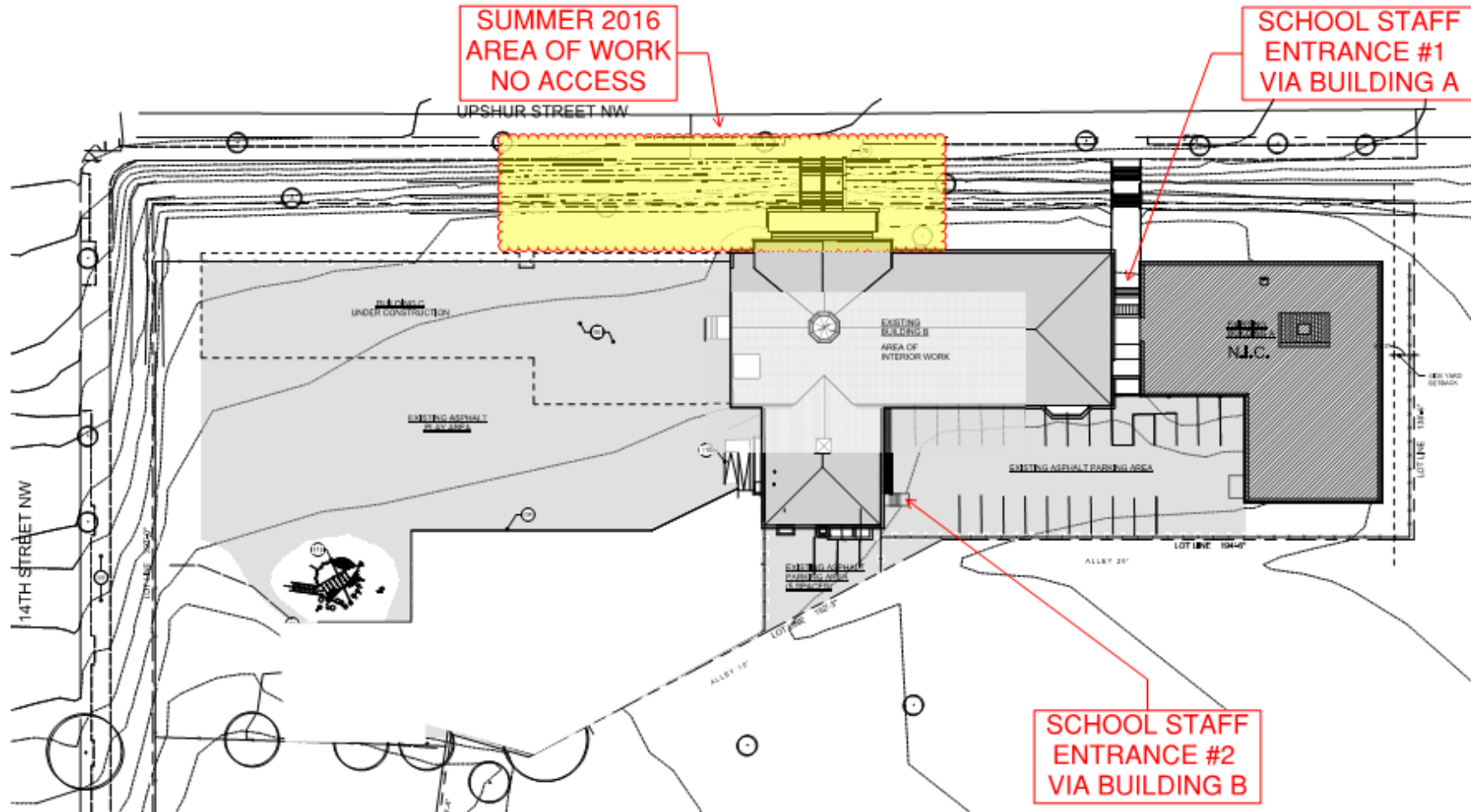
## Front Entrance Stairs and ADA Ramp – Projected Completion Summer 2016

Escaleras entrada principal y rampa de ADA - terminación proyectada para verano 2016



## Front Entrance Restricted Access into Powell Elementary School - Summer 2016

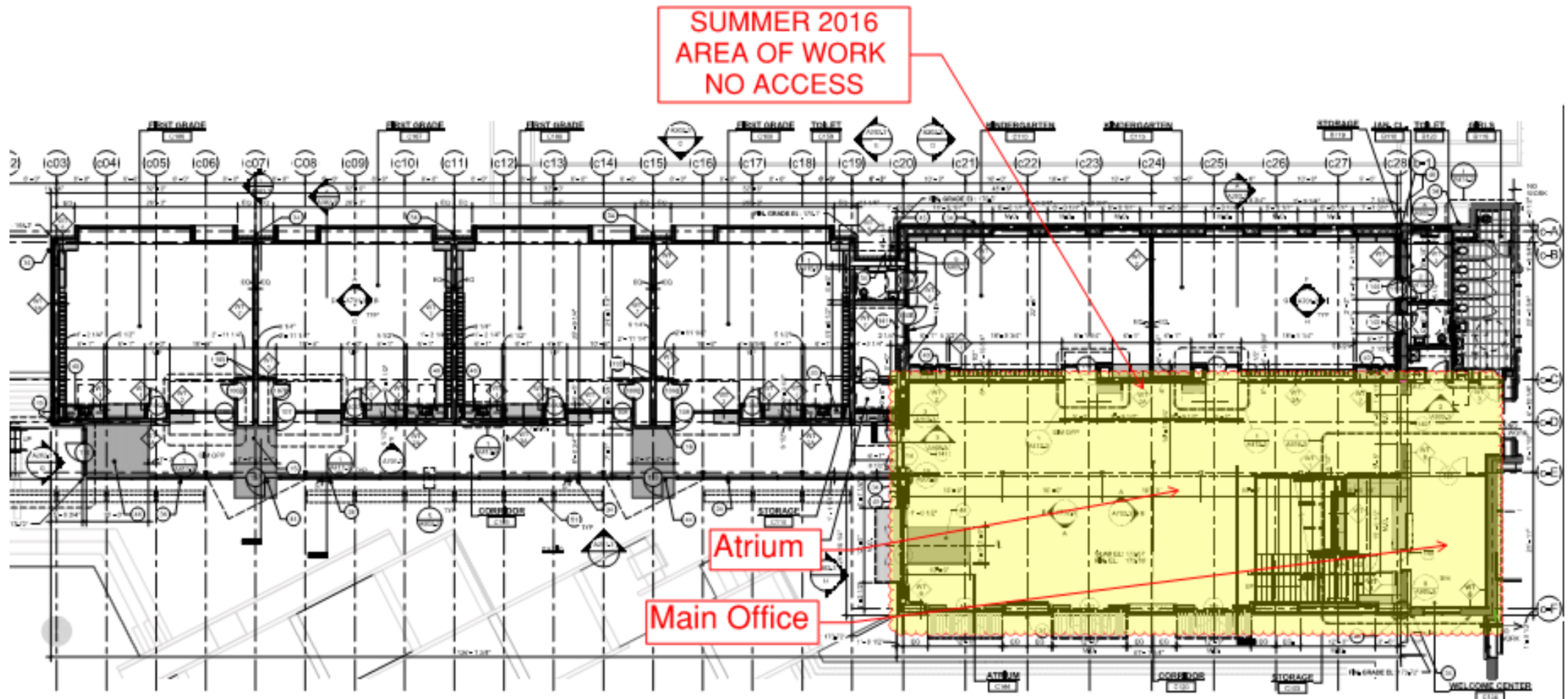
Acceso restringido entrada frontal de Powell - verano 2016





## First Floor Restricted Access for Work on Building D “Bridge”- Summer 2016

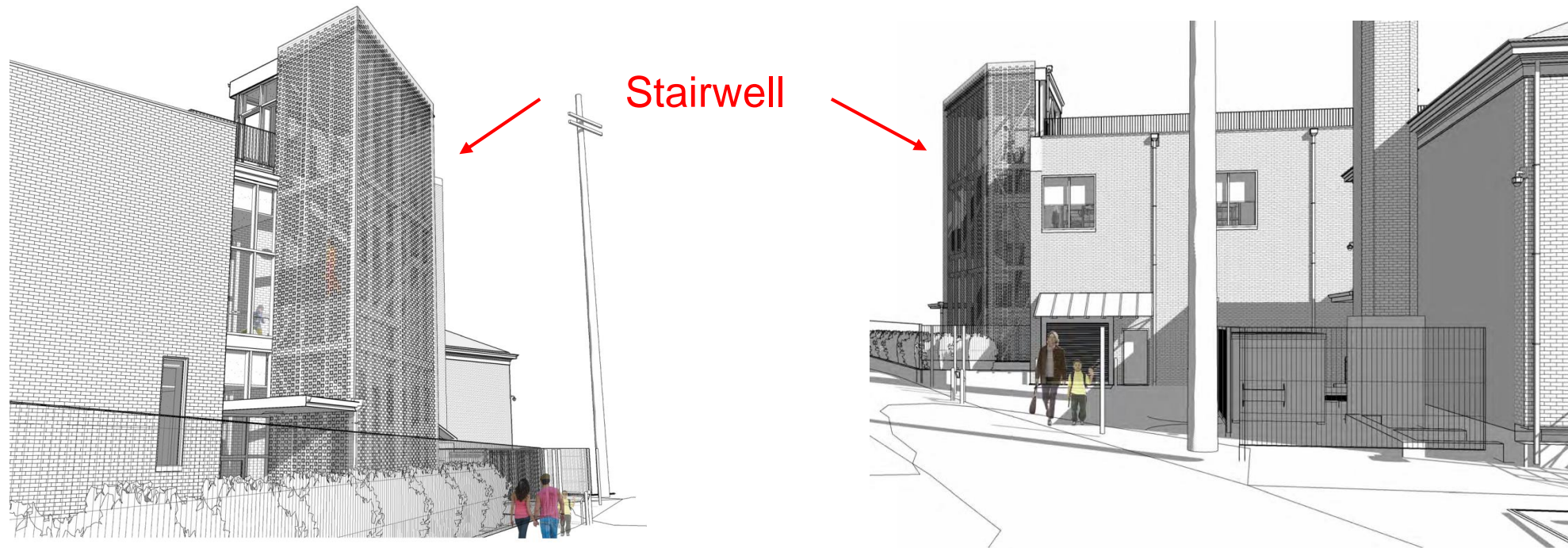
Acceso restringido Primer Piso para el trabajo en el puente de Edificio D - verano 2016



## DC City Council Approval and BZA Approval

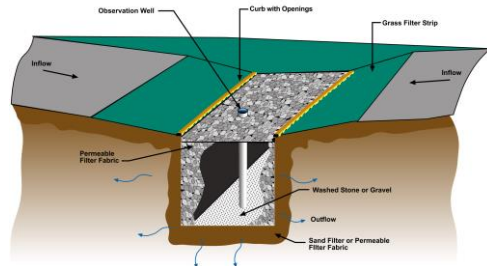
La aprobación del Concilio de la Ciudad y la aprobación del BZA

- June 7, 2016 - DC Council approval of remaining funds for Powell ES Building D  
translate
- June 7, 2016 - BZA approval of special waiver for Powell ES Building D exterior stairwell  
translate



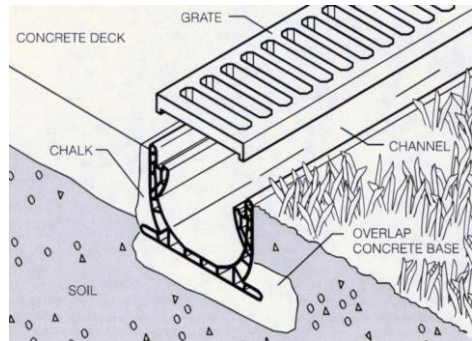
# Storm Water Management Components - ECE Tot Lot

## De Sistemas de Manejo de Aguas – ECE Tot Lot

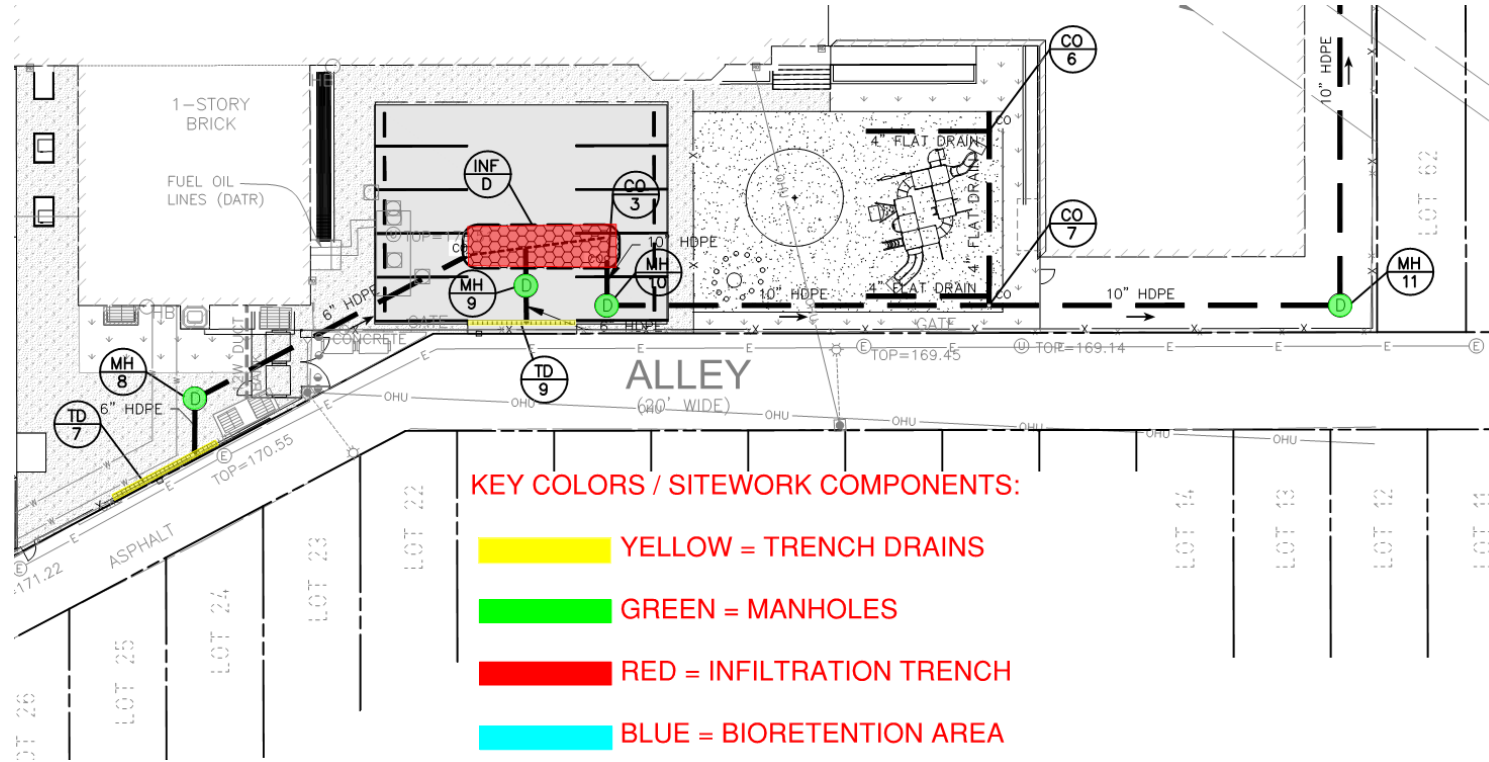


INFILTRATION TRENCH

Typical Infiltration Trench



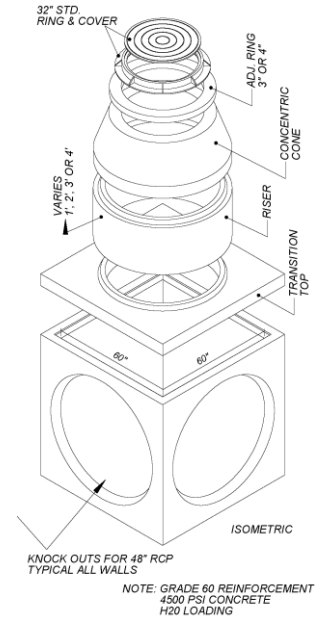
Typical Trench Drain



KEY COLORS / SITEWORK COMPONENTS:

- YELLOW = TRENCH DRAINS
- GREEN = MANHOLES
- RED = INFILTRATION TRENCH
- BLUE = BIORETENTION AREA
- PURPLE = X-FILTRATION SYSTEM

Typical Manhole

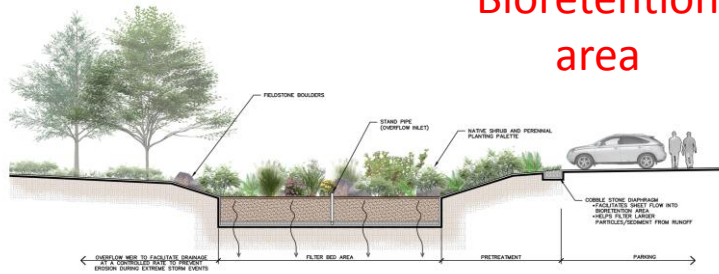




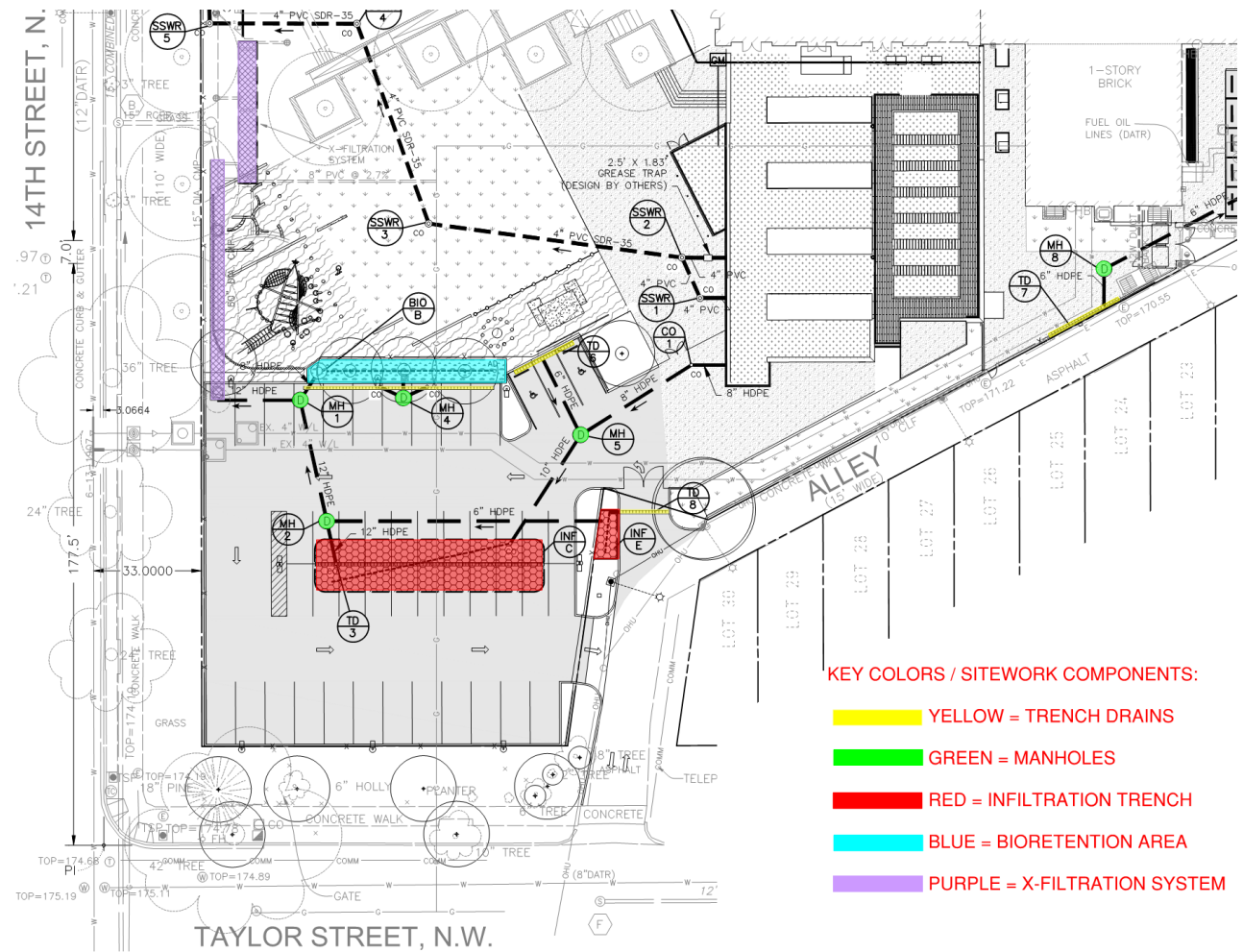
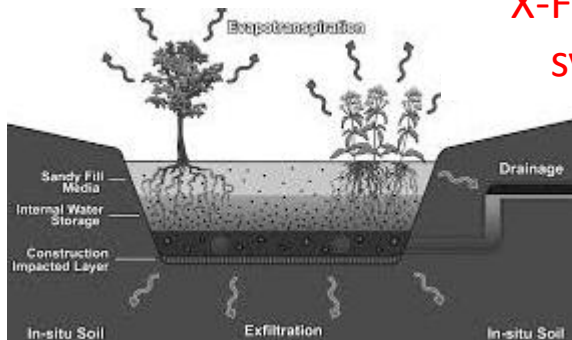
## Storm Water Management Components – Parking Lot and Playground

De Sistemas de Manejo de Aguas

Typical  
Bioretention  
area



Typical  
X-Filtration  
system



KEY COLORS / SITESWORK COMPONENTS:

■ YELLOW = TRENCH DRAINS

■ GREEN = MANHOLES

■ RED = INFILTRATION TRENCH

■ BLUE = BIORETENTION AREA

■ PURPLE = X-FILTRATION SYSTEM

## Trees – Existing and Proposed

### Los árboles – Existentes y propuestos



Trees on 14th Street

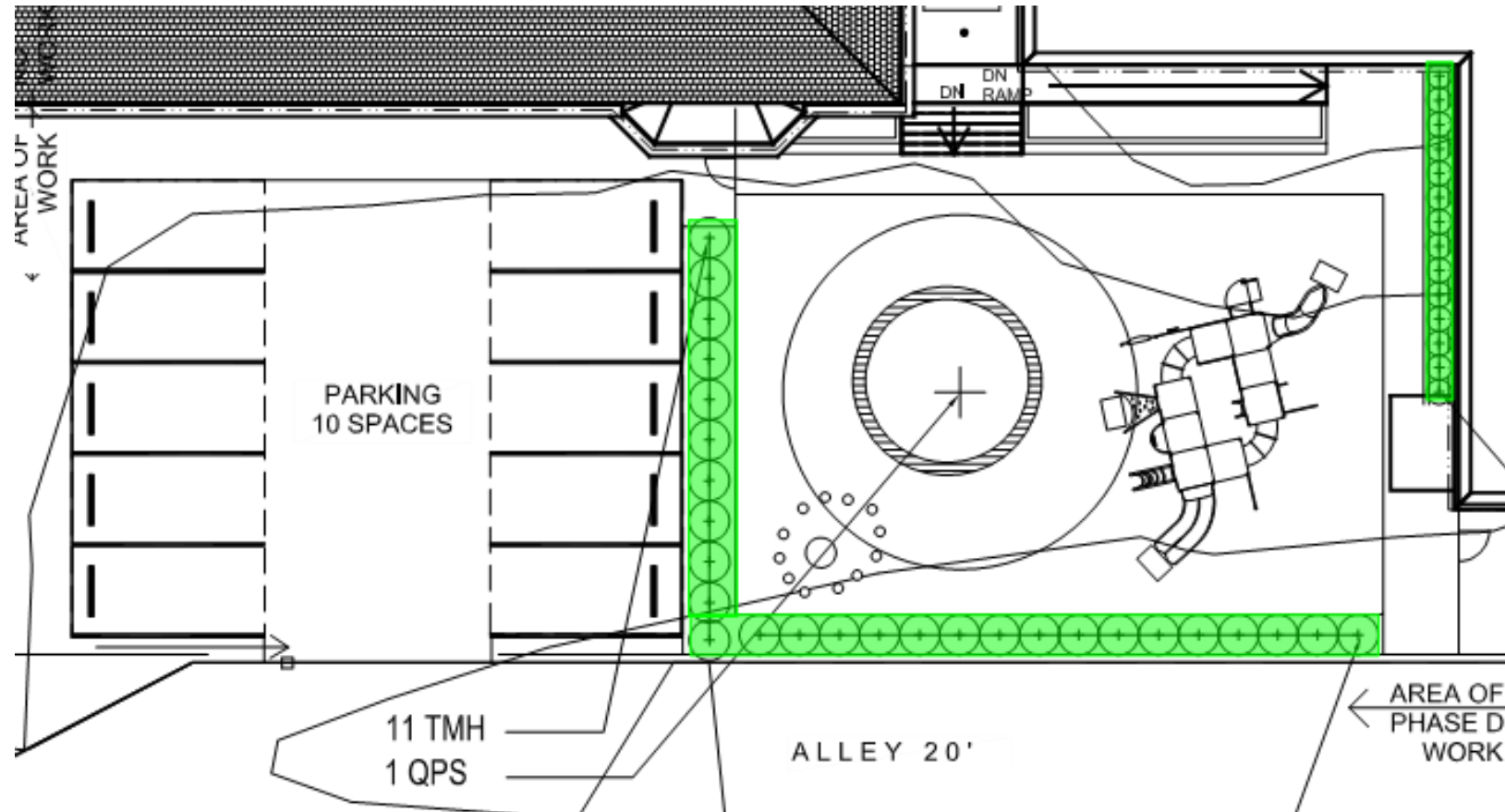


Trees on Taylor Street





Shrubs – Proposed  
Los arbustos – Propuestos



Progress Photos  
Fotos sobre la marcha





## Progress Photos

Fotos sobre la marcha



## Schedule and Upcoming School Construction Activities

### Lista y Próximas Actividades de Construcción Escolar

- **June 2016 – August 2016** – Front Entrance, ADA Ramp installation, and Atrium “Bridge” infrastructure

De Junio a Agosto 2016 - la entrada principal, instalación de la rampa de ADA, infraestructura del puente en el atrio

- **June 2016** – Completion of Foundation Piers/Footings

De Junio 2016 - La finalización de los compañeros de cimentación/zapatatas

- **July 2016** – Installation of Concrete Slab for First Floor

De julio de 2016 - La instalación de la losa de hormigón para primer piso

- **August 2016** – Erection of Structural Steel

De agosto de 2016 - Montaje de Acero Estructural



Don't forget to sign-in (please print)  
No se olvide registrarse (por favor imprima)

# Questions/Concerns?

## Preguntas/Inquietudes?

Next Meeting: Next Fall  
Siguiete Reunión: Siguiete Mes

Contact: [toussaint.webster@dc.gov](mailto:toussaint.webster@dc.gov) and [www.engagedcps.org](http://www.engagedcps.org)  
Por favor contactar: [toussaint.webster@dc.gov](mailto:toussaint.webster@dc.gov) y [www.engagedcps.org](http://www.engagedcps.org)

# Thank You!

## ¡Gracias!