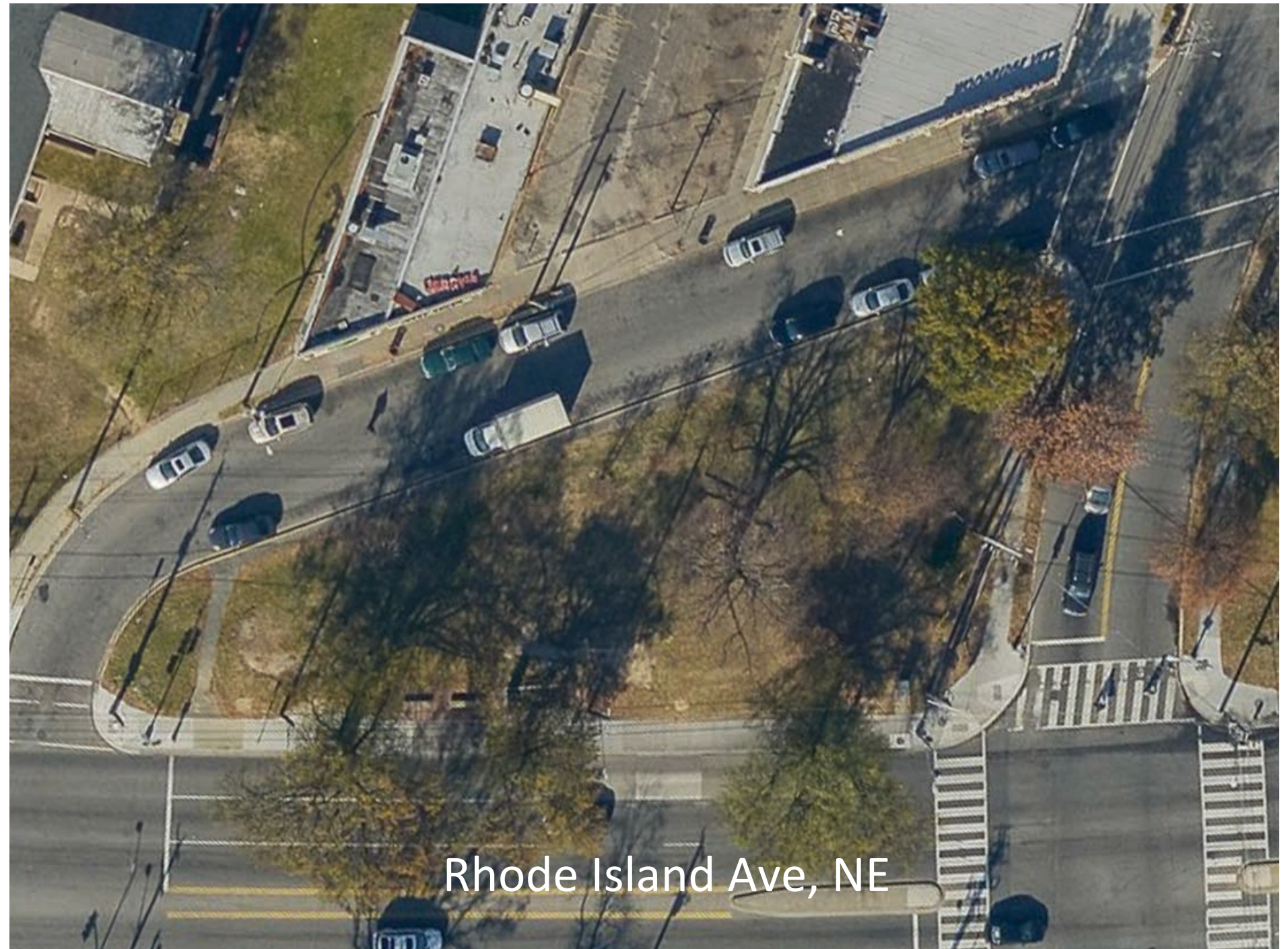




14th & Rhode Island Triangle Park
Brookland Union Baptist Church
Community Meeting
February 7, 2019 7:00 PM

AGENDA

1. Project Details
2. Project Goals
3. Existing Conditions
4. Design Considerations
5. Next Steps
6. Q & A + Discussion
7. Project Points of Contact



PROJECT DETAILS AND GOALS

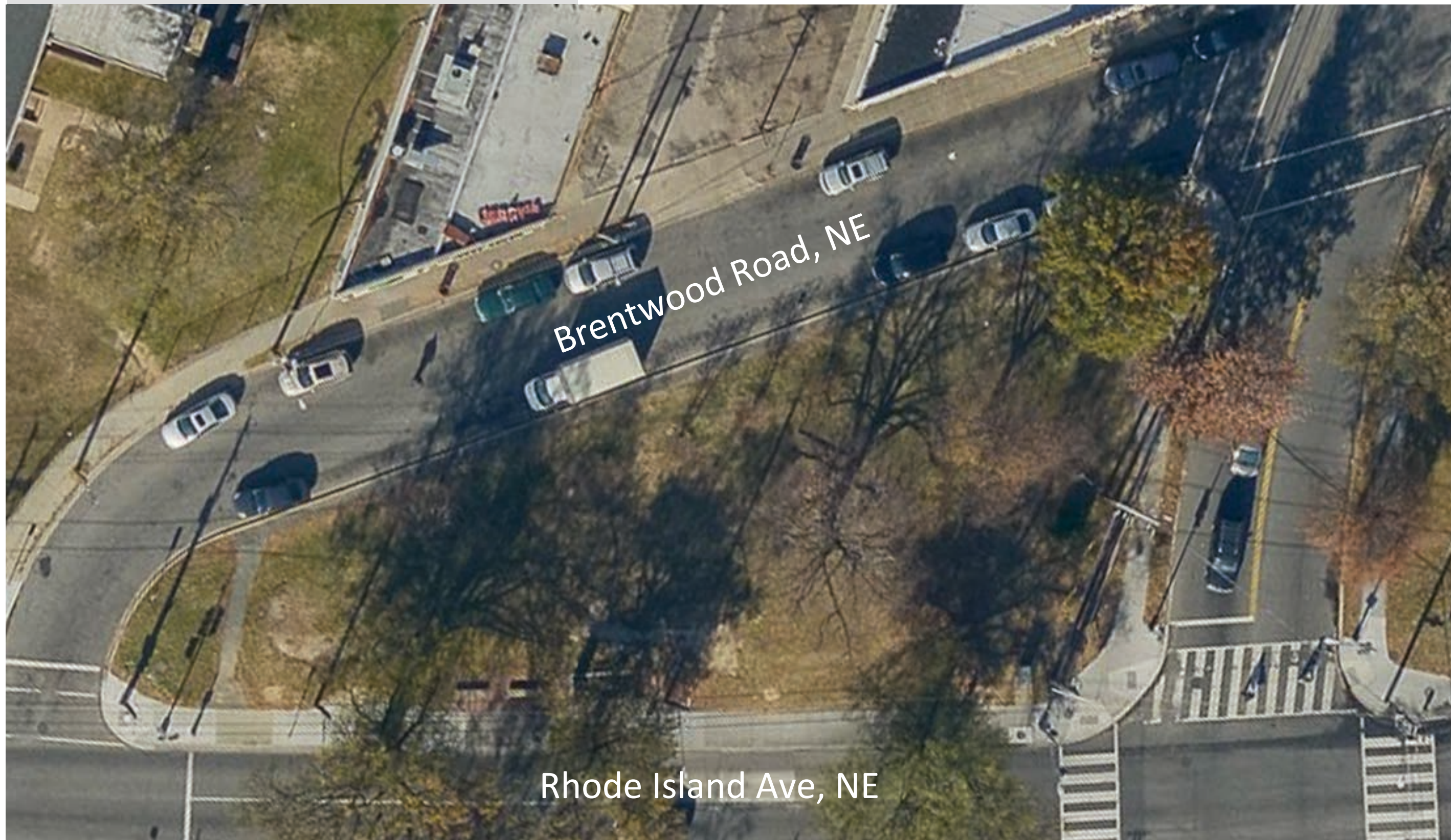
Project Budget

- \$150,000 for park improvements
- Funding in Fiscal Year 2019

Project Goals

- A park space that is functional, beautiful and incorporates design strategies that encourage safe behavior while reducing opportunities for crime to occur.
- A collaborative process with all community stakeholders, including residents, business owners and civic associations that results in a safe space for all in the community to enjoy.

EXISTING CONDITIONS



14th and Rhode Island Triangle Park



EXISTING CONDITIONS



Bus Stop Benches



Worn Pathways



Damaged Sod

DESIGN CONSIDERATIONS

1. **Adequate lighting**
2. Clear sight lines
 - Natural surveillance
 - Increased visibility
 - Reduced fear
3. Low maintenance
 - Clearly defined spaces
 - Clearly defined walkways
4. Durable materials
 - Steel amenities
 - Steel edging
 - Stone based mulch
5. Park activation
 - Encourage interaction
 - Create connections
6. Park ownership
 - Friends + Business + Civic
 - Park name + Identity?



DESIGN CONSIDERATIONS

1. Adequate lighting
- 2. Clear sight lines**
 - **Natural surveillance**
 - **Increased visibility**
 - **Reduced fear**
3. Low maintenance
 - Clearly defined spaces
 - Clearly defined walkways
4. Durable materials
 - Steel amenities
 - Steel edging
 - Stone based mulch
5. Park activation
 - Encourage interaction
 - Create connections
6. Park ownership
 - Friends + Business + Civic
 - Park name + Identity?



DESIGN CONSIDERATIONS

1. Adequate lighting
2. Clear sight lines
 - Natural surveillance
 - Increased visibility
 - Reduced fear
3. **Low maintenance**
 - **Clearly defined spaces**
 - **Clearly defined walkways**
4. Durable materials
 - Steel amenities
 - Steel edging
 - Stone based mulch
5. Park activation
 - Encourage interaction
 - Create connections
6. Park ownership
 - Friends + Business + Civic
 - Park name + Identity?



DESIGN CONSIDERATIONS

1. Adequate lighting
2. Clear sight lines
 - Natural surveillance
 - Increased visibility
 - Reduced fear
3. Low maintenance
 - Clearly defined spaces
 - Clearly defined walkways
4. **Durable materials**
 - **Steel site amenities**
 - **Steel edging**
 - **Stone based mulch**
5. Park activation
 - Encourage interaction
 - Create connections
6. Park ownership
 - Friends + Business + Civic
 - Park name + Identity?



DESIGN CONSIDERATIONS

1. Adequate lighting
2. Clear sight lines
 - Natural surveillance
 - Increased visibility
 - Reduced fear
3. Low maintenance
 - Clearly defined spaces
 - Clearly defined walkways
4. Durable materials
 - Steel amenities
 - Steel edging
 - Stone based mulch
5. **Park activation**
 - **Encourage interaction**
 - **Create connections**
6. Park ownership
 - Friends + Business + Civic
 - Park name + Identity?



DESIGN CONSIDERATIONS

1. Adequate lighting
2. Clear sight lines
 - Natural surveillance
 - Increased visibility
 - Reduced fear
3. Low maintenance
 - Clearly defined spaces
 - Clearly defined walkways
4. Durable materials
 - Steel amenities
 - Steel edging
 - Stone based mulch
5. Park activation
 - Encourage interaction
 - Create connections
6. **Park ownership**
 - **Friends + Business + Civic**
 - **Park name + Identity?**



NEXT STEPS

1. Community Discussion
 - Winter – Spring 2019
 - Next Comm Mtg Date TBD
2. Design Completion + Permitting
 - Summer 2019 – Fall 2019
3. Construction
 - Winter – Spring 2020



Q & A + DISCUSSION



POINTS OF CONTACT

Department of General Services

Jackie Stanley, Community Outreach Coordinator

jackie.stanley@dc.gov

Department of Parks and Recreation

Brent Sisco, Landscape Architect

brent.sisco@dc.gov

Project Website

www.dgs.dc.gov/page/14th-and-rhode-island-triangle-park