



WARD 1 SHORT TERM FAMILY HOUSING (STFH)
PHASE 1 STFH FACILITY CONSTRUCTION UPDATE
September 2020

35 Short-Term Family Housing Units	Dedicated Play & Common Areas	Supportive Programs	Community-Integrated Architectural Design
Substantial Completion November, 2020		New families are projected to move in starting January, 2021	

August Milestones.

- All interior door frames were installed on all floor levels allowing for access control wiring to be pulled to its respective door location.
- Priming and first coat of wall paint began on the ground level and second floor which allows for cover plates to be installed over electrical, mechanical, and plumbing wall outlet devices.
- Main elevator passed initial inspection for use to transport workers and materials to all floor levels which is essential for completing architectural finishes.

September Projections:

- Permanent water meter is scheduled to be set by DC Water by mid-month.
- Mechanical unit start up for permanent air conditioning is scheduled to start at the beginning of the month and will be complete by end of the month.
- Ceiling close-in for 3rd and 4th floor corridors is scheduled to begin week of September 14.

Questions? Please direct all inquiries to STFHprojects.dgs@dc.gov

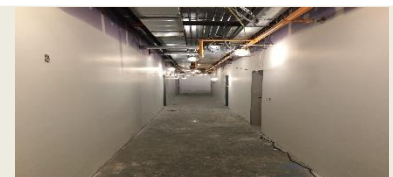
View of Façade Finishes from South-East corner of building.



View of Façade Finishes from North-East corner of building.



View of Paint Finish at second floor walls.



For your safety, only authorized personnel are allowed to access the construction sites