

SHEPHERD PARK PROJECT

Construction Update: June 2020

PROJECT KICKOFF

Apr 2018

DESIGN AND OUTREACH

Apr 2018 - Sep 2019

DRAWING COMPLETION / PERMIT APPROVALS

Sep 2019 - Dec 2019

GROUNDBREAKING CEREMONY

Dec 2019

ESTIMATED PROJECT COMPLETION

Late Summer 2020

PROJECT OVERVIEW

The Shepherd Park Community Center project includes the addition of a new community center attached to the existing Shepherd Elementary School to include: a new cafeteria / cooking kitchen, multipurpose dining room, gymnasium, fitness center, office, and restrooms for both elementary students and adults. New amenities will be used by students during the day with community usage after school hours.

WHAT HAPPENED IN MAY:

- Completion of concrete slab installation.
- Installation of exterior insulated metal panels and roofing membrane began.
- Completion of metal decking over gymnasium and 90% completion over entire structure.
- Continued installation of underground utilities and rough-in of conduit.
- Completion of framing at gymnasium.
- Continued third party inspections throughout new construction.
- Abatement of existing school multipurpose room and kitchen began.

WHAT TO EXPECT IN JUNE:

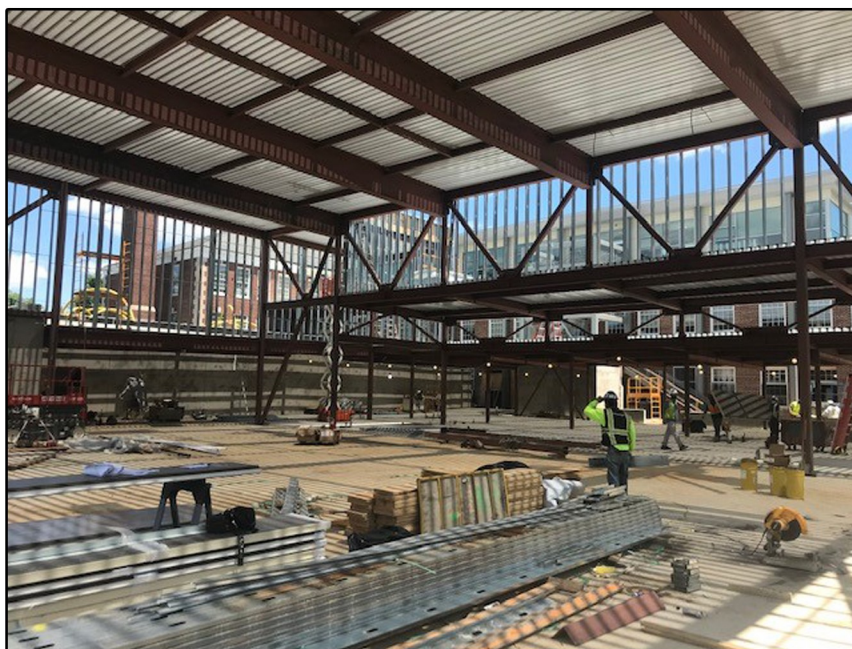
- Installation of the interior wall framing and electrical wiring.
- Continued installation of roofing along with setting of the mechanical units on roof.
- Continued installation of insulated exterior metal panel system on new facility.
- Continued installation of exterior wall framing.
- Continued demolition of existing school kitchen and mechanical and plumbing preparation for new kitchen.

DID YOU KNOW?

The exterior facade of the new Shepherd Park Community Center will be clad with a product called "Swisspearl", which is a fiber cement panel system made from regenerative raw materials and colored with a pigmented acrylic top finish. "Swisspearl" is completely non-combustible, rot, and impact resistant. Its exterior thermal insulation properties keep the entire building structure at a constant temperature, reducing the loss of energy and allowing excess heat to escape.



View of new facility from Jonquil Street field entrance.



View from west well of new gymnasium.

FOR ADDITIONAL INFORMATION

www.dgs.dc.gov/page/shepherd-park-community-center



DPR.EVENTS • @DCDPR



DPR.DC.GOV • CAPITAL PROJECTS

