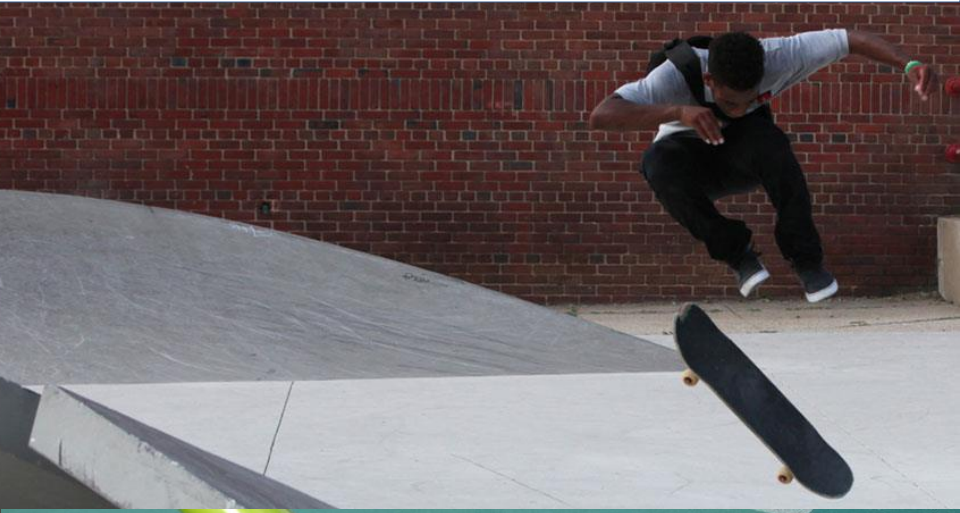


# we elev★te



## Agenda

- ☐ SITE VIEW
- ☐ BEFORE & AFTER PICTURES
- ☐ SECTIONS
- ☐ WHY?
- ☐ CONSTRUCTION STRATEGY
  - TIMELINE – JUNE 2013 TO JULY 2015
  - TIMELINE – AUGUST 2015 TO APRIL 2016
  - TIMELINE – EASTER BREAK 2016
  - TIMELINE – APRIL 2016 TO JULY 2016
- ☐ ACCESS & FLOW
  - PARTION PICTURE
- ☐ CONSTRUCTION PHOTOS
- ☐ NEXT STEPS
- ☐ Q & A

## RULES OF THE ROAD

- ☐ RESPECT EACH OTHER
- ☐ CELLPHONES OFF OR ON VIBRATE
- ☐ Q&A WILL BE TAKEN AT THE END OF THE PRESENTATION



# *Elevating the Quality of Life in the District*



## BEFORE & AFTER PICTURES

# *Elevating the Quality of Life in the District*



BEFORE RENOVATION



BEFORE RENOVATION



AFTER RENOVATION



AFTER RENOVATION



# *Elevating the Quality of Life in the District*





*Elevating the Quality of Life in the District*



**SOUTH ELEVATION**



DISTRICT OF COLUMBIA  
PUBLIC SCHOOLS





*Elevating the Quality of Life in the District*



BEFORE RENOVATION

AFTER RENOVATION



**REAR ELEVATION**



DISTRICT OF COLUMBIA  
PUBLIC SCHOOLS





*Elevating the Quality of Life in the District*



BEFORE RENOVATION

AFTER RENOVATION



**MAIN ENTRANCE**



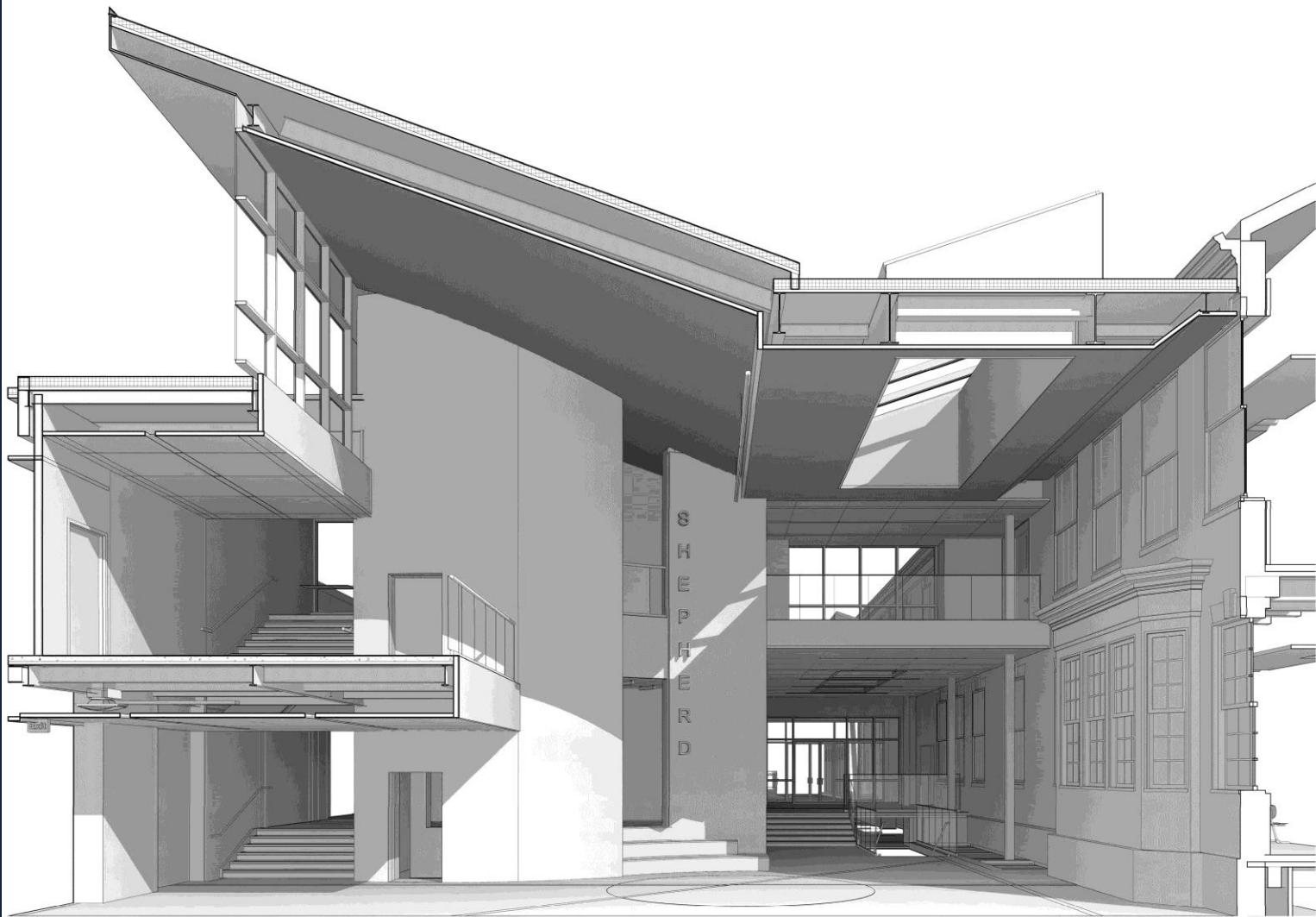
DISTRICT OF COLUMBIA  
PUBLIC SCHOOLS





## SECTIONS

*Elevating the Quality of Life in the District*



**COURTYARD**

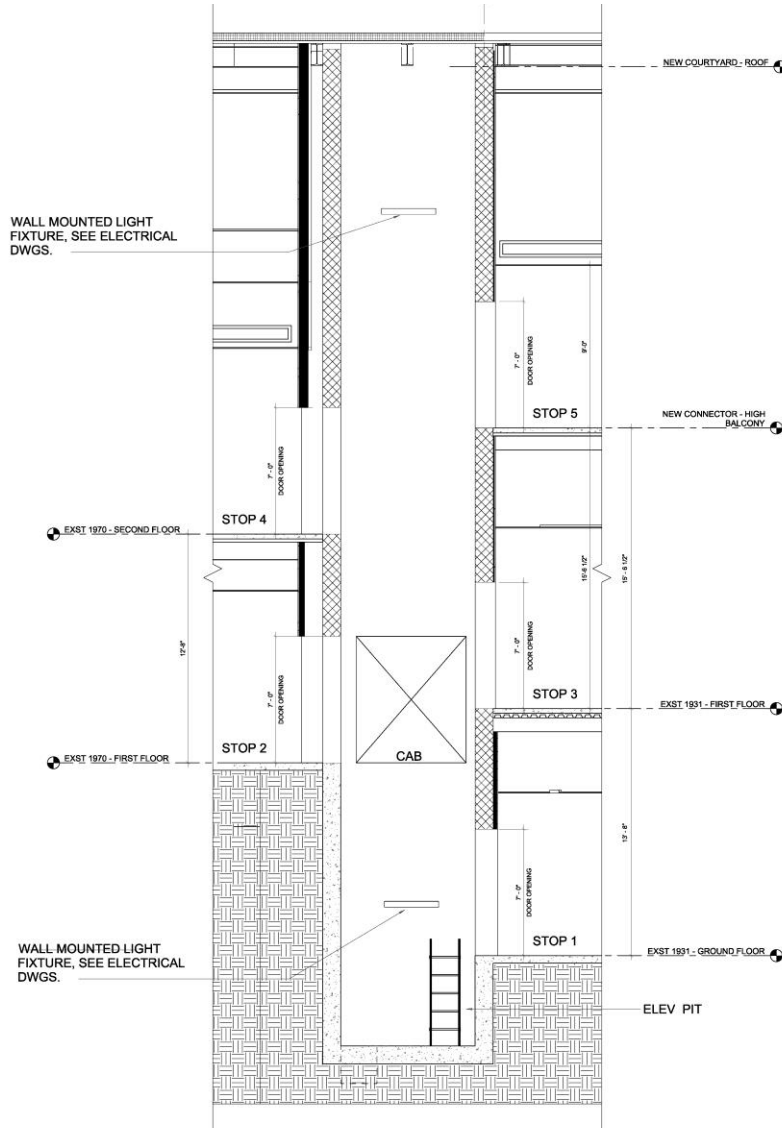


DISTRICT OF COLUMBIA  
PUBLIC SCHOOLS





# Elevating the Quality of Life in the District



## WHY?

### **❑ TO CREATE A CLEAR, INVITING, AND VISIBLE MAIN ENTRANCE CONNECTING ALL EXISTING BUILDINGS TOGETHER**

A new and inviting enclosed Entry Courtyard and an Entry Plaza are created. This new Entry Courtyard serves to link all the buildings together and improve the efficiency of internal circulation. It will also create a sense of “having arrived” for students, staff, and visitors. The Entry Plaza is laid out with a diagonal axis from the intersection of 14<sup>th</sup> Street and Kalmia Road leading to the new Entry Courtyard while recognizing the existing entry to the historical 1931 building.



## WHY?

### ☐ TO CREATE FUNCTIONAL AND ACCESSIBLE CONNECTIONS

A new ADA elevator is provided inside the new Entry Court enabling a person access to all five existing levels complying with ADA requirements

### ☐ TO CREATE A PSYCHOLOGICAL CONNECTION OF ARCHITECTURAL STYLES

The multi-functional outdoor Plaza also serves as a pedestrian connection between the 1931 historical building and the 1970 building. It also serves as a community gathering space

## WHY?

### ❑ TO CREATE FUNCTIONAL PLAN LAYOUTS

Floor plans have been created for clustering functionally related spaces and areas together



## CONSTRUCTION STRATEGY

### ■ TIMELINE – JUNE 2013 TO JULY 2015

#### 2013

- 8 Classrooms Modernized (SUMMER 2013)
- All Restrooms Renovated (SUMMER 2013)
- New Mechanical/HVAC Systems Upgraded (SUMMER 2013)
- New Electrical Systems Upgraded (SUMMER 2013)
- IT Upgrade (SUMMER 2013)
- Structure Ground Floor on 1931 Building (SUMMER 2013)
- New Media Center (FALL 2013)
- New Computer Lab (FALL 2013)
- 2 Language Classrooms (FALL 2013)
- Teacher's Lounge & 2 Offices (FALL 2013)

#### 2014

- Upgrade Welcome Center/Principal's Office (SUMMER)
- Several Classrooms Upgraded & Right Size (SUMMER)
- Corridors & Stairways Upgraded (SUMMER)

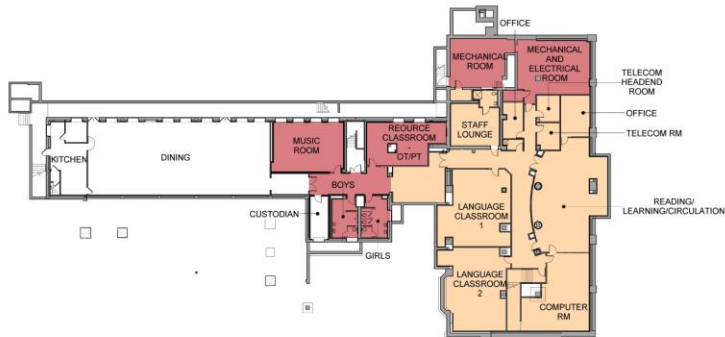
#### 2015

- Foundation for Phase 2 (SUMMER)
- Partial Demolition (SUMMER)
- Construction Staging (SUMMER)
- 6 Classrooms from 4<sup>th</sup> – 5<sup>th</sup> Grade (SUMMER)



# Elevating the Quality of Life in the District

## CONSTRUCTION FROM JUNE 2013 – JULY 2015



**GROUND FLOOR PLAN**



**FIRST FLOOR PLAN**

### PHASING LEGEND

- SUMMER 2013  
STRUCTURE GROUND FLOOR 1931  
NEW HVAC - WHOLE FLOOR
- FALL 2013
- SUMMER 2014



**SECOND FLOOR PLAN**

## CONSTRUCTION STRATEGY

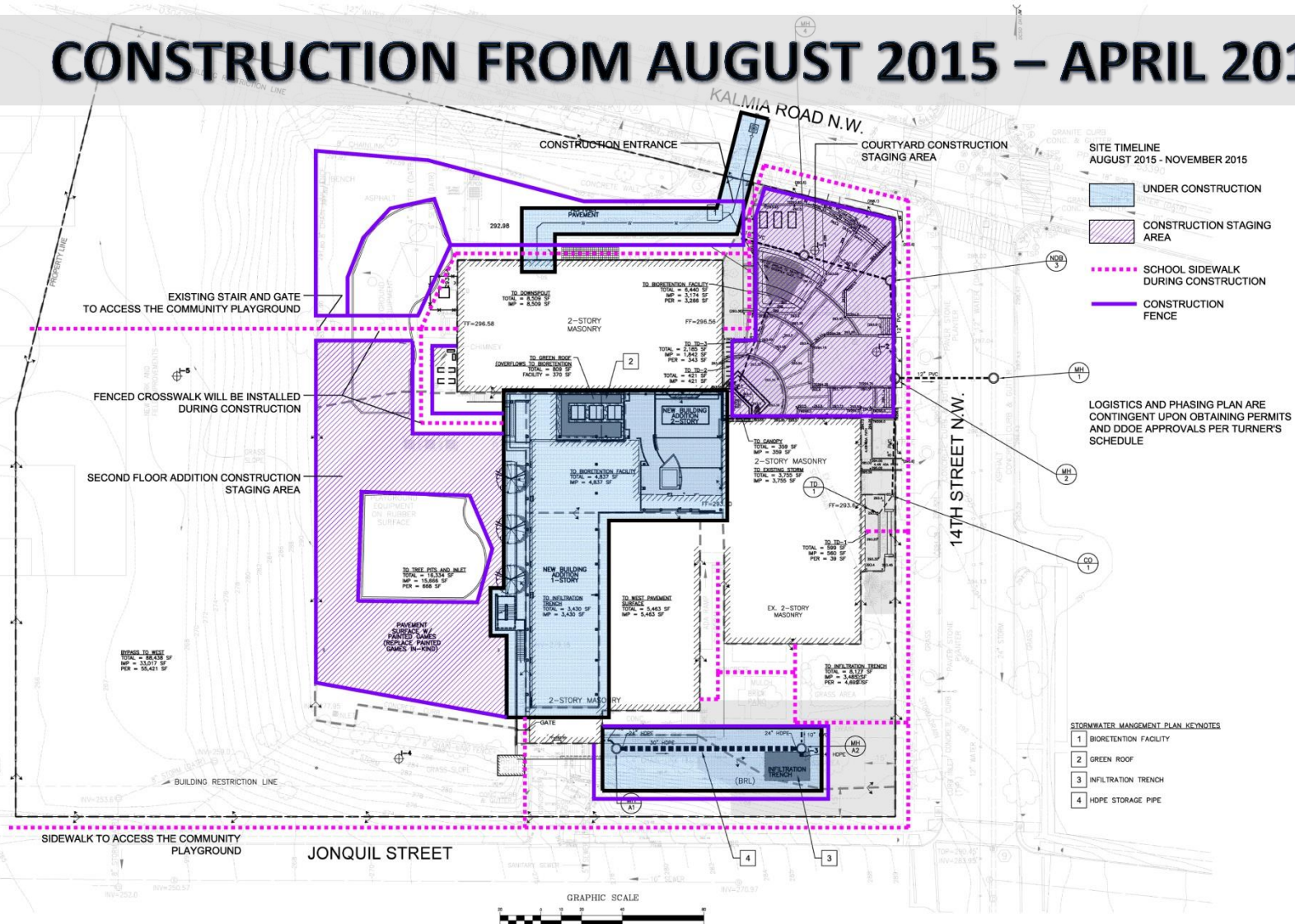
### ■ TIMELINE – AUGUST 2015 TO APRIL 2016

- Courtyard
- Entrance at 14th & Kalmia
- 2nd Floor Addition on 1956 Building
- 5-Stop Elevator
- 2<sup>nd</sup> Floor Connector
- Upgrading Sprinkler System
- Storm Water Management
- Plaza





# CONSTRUCTION FROM AUGUST 2015 – APRIL 2016



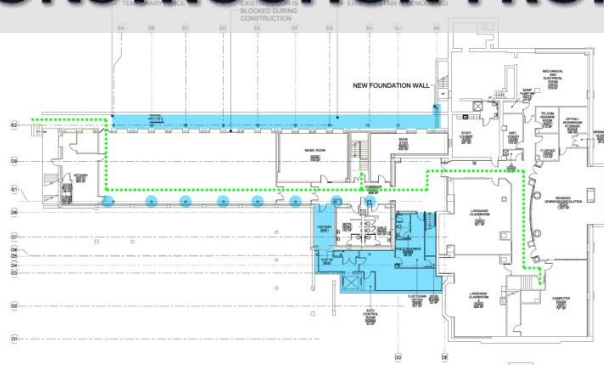
# *Elevating the Quality of Life in the District*

## CONSTRUCTION FROM AUGUST 2015 – APRIL 2016

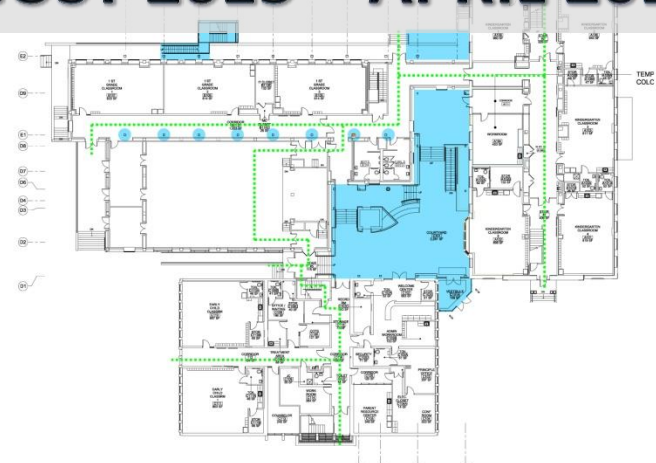




## CONSTRUCTION FROM AUGUST 2015 – APRIL 2016



**GROUND FLOOR PLAN**

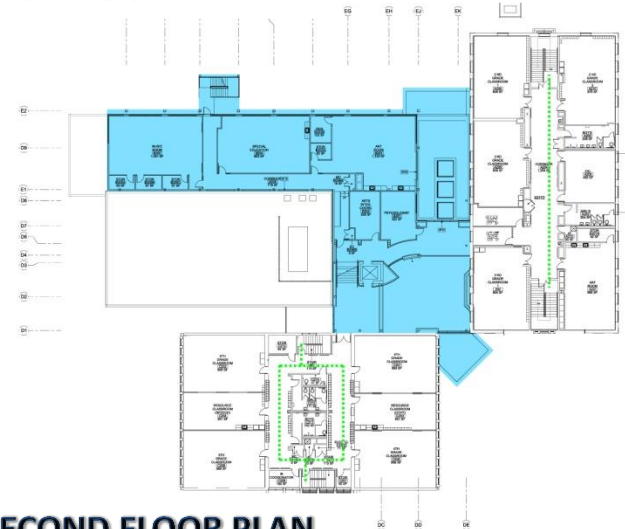


**FIRST FLOOR PLAN**

### TIMELINE AUGUST 2015 – APRIL 2015

- UNDER CONSTRUCTION
- ..... EGRESS DURING CONSTRUCTION

LOGISTICS AND PHASING PLAN ARE CONTINGENT UPON  
OBTAINING PERMITS AND DOEE APPROVALS PER  
TURNER'S SCHEDULE



**SECOND FLOOR PLAN**



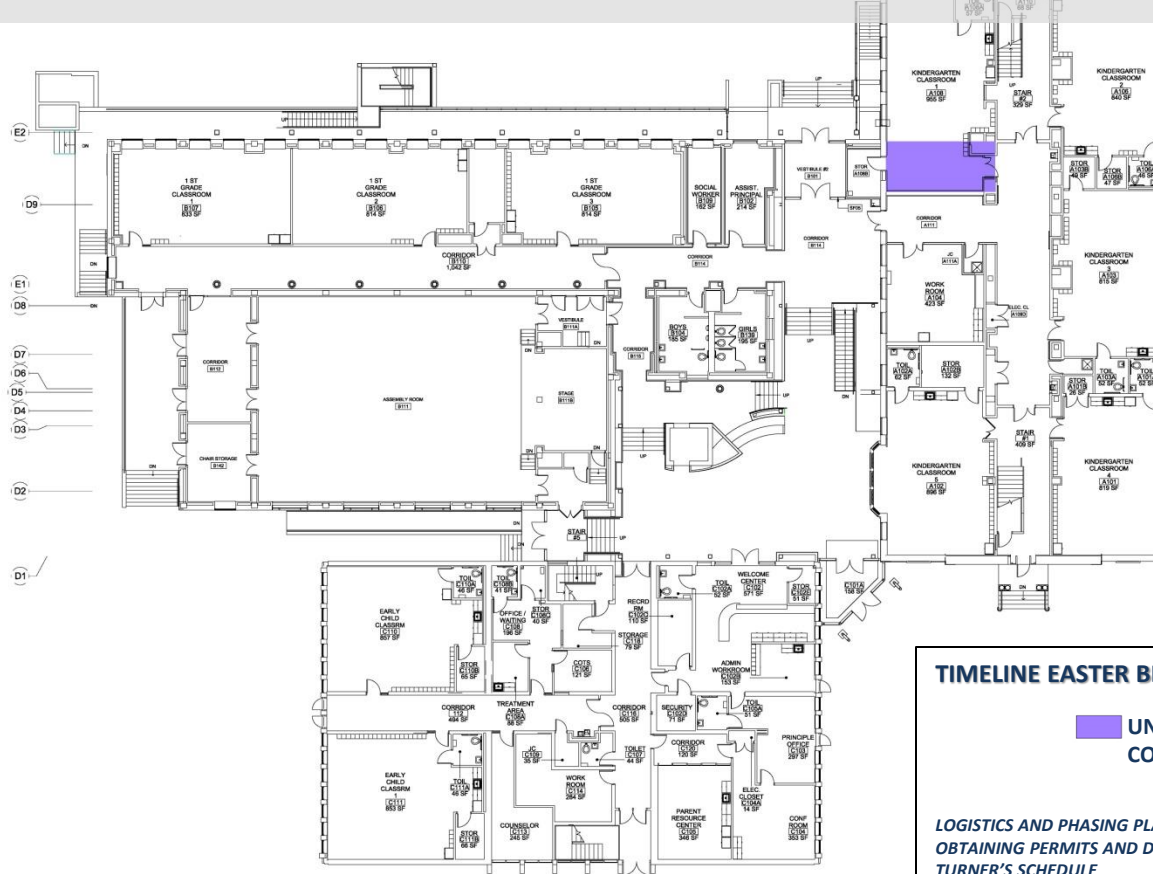
## CONSTRUCTION STRATEGY

### ■ TIMELINE – EASTER BREAK 2016

- Kindergarten Classroom
- Connector to 1931 Building



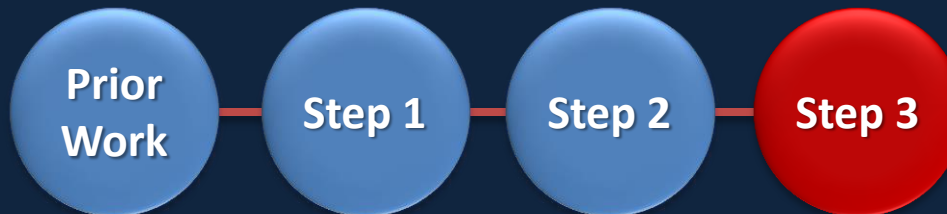
## CONSTRUCTION DURING EASTER BREAK 2016



## CONSTRUCTION STRATEGY

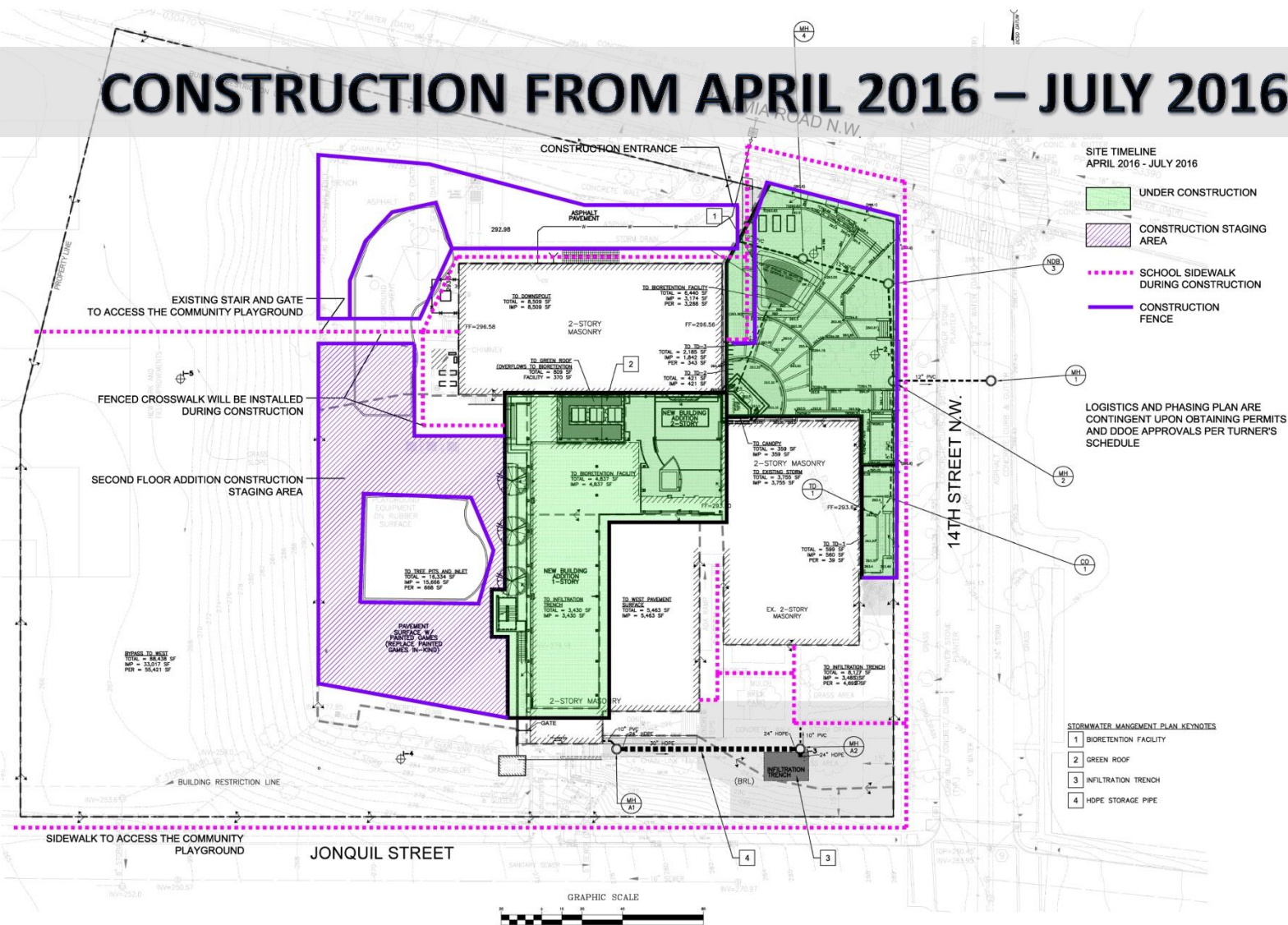
### ■ TIMELINE – APRIL 2016 TO JULY 2016

- **Completion** of the Courtyard
- **Completion** Connector to 1931 Building
- **Completion** of 2nd Floor Addition on 1956 Building
- **Completion** 5-Stop Elevator
- **Completion** of 2<sup>nd</sup> Floor Connector
- **Completion** of Plaza
- **Construction** of Special Education Classroom & 2 Offices
- Demolition of Existing Stair
- Punch List Items





## CONSTRUCTION FROM APRIL 2016 – JULY 2016



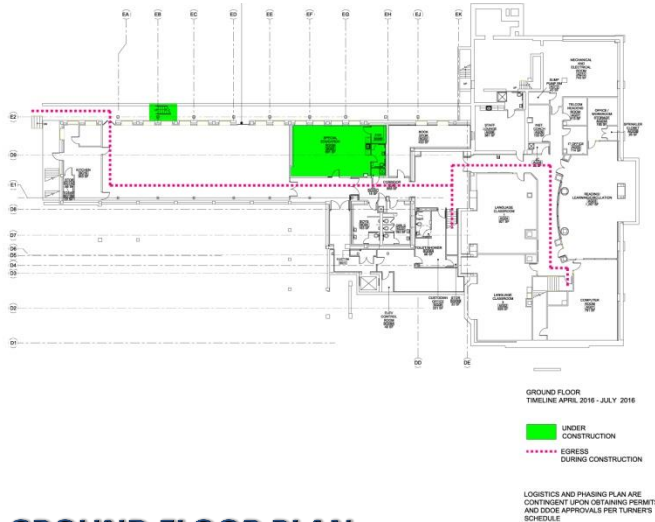
# *Elevating the Quality of Life in the District*

## CONSTRUCTION FROM APRIL 2016 – JULY 2016

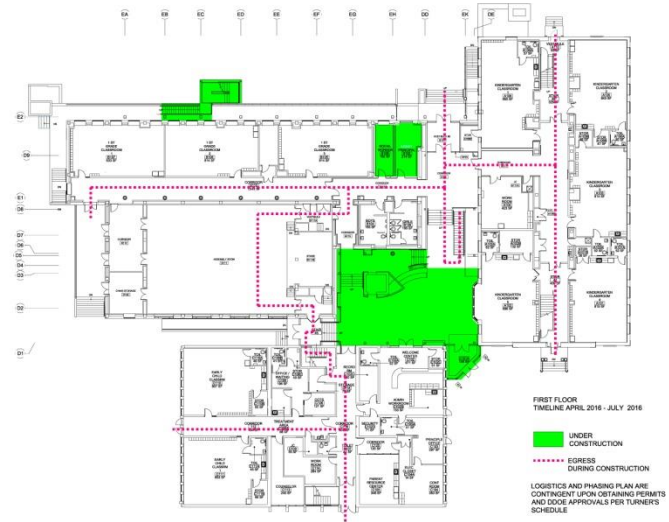




# Elevating the Quality of Life in the District



**GROUND FLOOR PLAN**

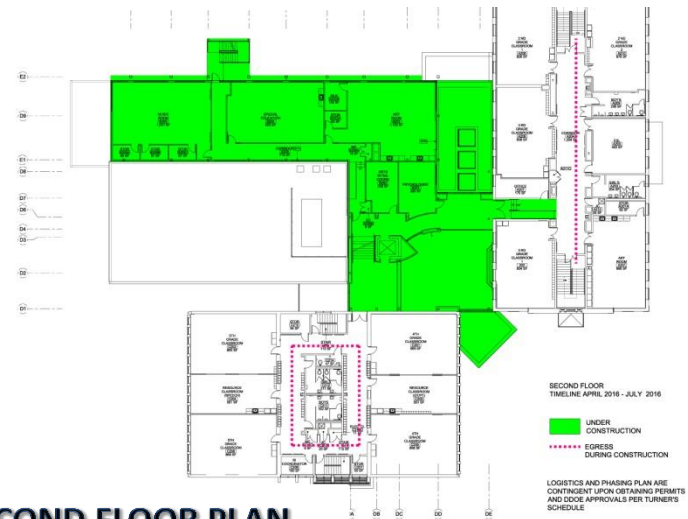


**FIRST FLOOR PLAN**

## TIMELINE APRIL 2016 – JULY 2016

■ UNDER CONSTRUCTION  
\*\*\*\*\* EGRESS DURING CONSTRUCTION

LOGISTICS AND PHASING PLAN ARE CONTINGENT UPON OBTAINING PERMITS AND DOEE APPROVALS PER TURNER'S SCHEDULE



**SECOND FLOOR PLAN**



# *Elevating the Quality of Life in the District*

## CONSTRUCTION STAGING PHOTOS



CONSTRUCTION ENTRANCE



COURTYARD STAGING AREA



FENCED SIDEWALK



SECOND FLOOR ADDITION  
STAGING AREA

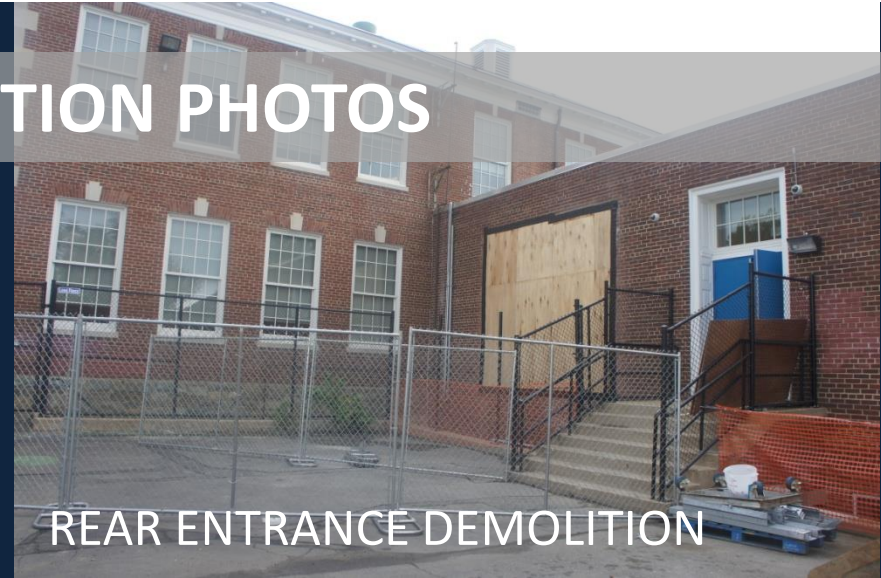


# *Elevating the Quality of Life in the District*

## CONSTRUCTION PHOTOS



COURTYARD AREA DEMOLITION



REAR ENTRANCE DEMOLITION



MECHANICAL UNITS RELOCATION



NEW ENTRANCE TO STAIR

**Kenny Diggs**  
**DGS Associate Director**  
**DGS Government Affairs & Communications**  
**[kenneth.diggs@dc.gov](mailto:kenneth.diggs@dc.gov)**  
**(202) 580-9361**

**Your School's DGS Website Project Page:**  
**<http://dgs.dc.gov/node/559452>**

**Get *Social* with us on Facebook & Twitter Today!**



**Follow @DCDGS**



**Become a Fan @DC Department of General Services**