



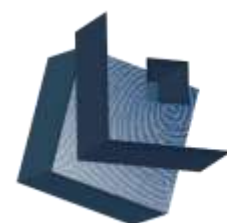
DISTRICT OF COLUMBIA
PUBLIC SCHOOLS



SHEPHERD ELEMENTARY SCHOOL

Community Meeting # 5

September 26, 2019



BELL
architects



MCN
BUILD
BUILDING OUR COMMUNITY

Agenda

1. Welcome + Introductions
2. Rules of the Road
3. Section One: What We've Heard
4. Section Two: Design
5. Next Steps
6. Points of Contact



RULES OF THE ROAD

1. Welcome! Thanks for attending!
2. Please hold all questions until the end of each section of the meeting.
3. Please sign in before leaving.
4. Please be courteous to others and the presenters. We all want the best possible project!

Section One – What We’ve Heard



What We've Heard...

1. Concerns about lead in playground surfacing.

- The playground surface for relocated playground will be tested during upcoming installation to ensure there is no lead, or lead dust, that settles on the surfacing.
- The tot lot was tested and lead levels higher than 400 PPM (put in numbers) were detected (EPA safety threshold) . The playground surface was power-washed and retested and there is no remaining lead on the surface.
- The tot lot equipment was also tested and lead was found in the paint, but it is encapsulated and does not post a hazard to our children.
- Further testing will be provided at the recommendation of a third party inspector and DGS will follow those directions and recommendations. Results will be posted on the project website and shared with the school.

What We've Heard...

2. Security: Concerns about student safety before /during construction.

- A 6' tall safety fence will completely surround the construction site and will be inspected daily to ensure with have the students are safe from any and all construction activity. ***Safety is Priority # 1.***
- The general public will not have access to the new gymnasium or multipurpose room until after Shepherd after-school programming is complete.
- The new addition will have security cameras and automatic locking doors to provide an extra level of security.

What We've Heard...

3. Lack of outdoor space for students during construction.

- Shepherd ES has exclusive access to the Shepherd athletic field every weekday (M-F) from 8:00 AM – 3:30 PM for the entire 2019-2020 school year.
- No other groups or entities are allowed to be on the field during school hours during these times.
- Should any issues arise, please contact Brent Sisco (DPR) at brent.sisco@dc.gov or (202) 673-7647.

What We've Heard...

4. The existing loading dock / dumpster enclosure is poorly maintained, smells and is unsightly.

- The existing fence enclosure will be replaced with a taller and higher quality enclosure (more information to come later in presentation).
- New, upgraded dumpsters will replace the existing dumpsters in order to prevent rodent access and spillage.
- Trash pickup will increase to six times/week.
- DGS Facilities/DCPS will continue to work with Shepherd admin as it relates to operations and maintenance needs

What We've Heard...

5. Concerns about the new addition impacting the Shepherd Playground.
 - The existing older children's playground has been relocated to outside of the limit of construction. New surfacing is scheduled to be installed next week.
 - The tot playground is not being impacted.
6. Concerns about air quality and rodent control.
 - The contractor will be monitoring air quality per the recommendations of the third party industrial hygienist. Results will be shared with the community per their recommendations. Additionally, the contractor will be watering down the construction site to control dust **(ANY OTHER MCN INFO??)**
 - The contractor will be implementing a rodent control plan throughout the duration of the project by placing traps in strategic areas of the site.

What We've Heard...

7. The addition might not blend in with the character of the neighborhood.
 - The design team has provided an addition that matches the school with a modern look and have received positive feedback from the Commission of Fine Arts.
 - A physical mockup has been provided for tonight's meeting and is located outside (more to come later in presentation).
8. Parking impacts.
 - The general contractor will direct the subcontractors to park at the Silver Spring Metro. Additionally, the contractor is currently working with local churches and synagogues to rent parking during the project.

What We've Heard...

9. The construction will be disruptive to the school while classes are in session.

- No pile driving will occur. The contractor will drill in order to place the footers.
- All construction activities will be conducted on Jonquil Street
- There will be a small portion of time when a lift will need access outside of the construction area. This will occur during non-school hours and the project team will inform DCPS whenever this access is requested.
- DGS/MCN will work with DCPS/Shepherd ES admin to monitor construction related noise and minimize impact to instruction.
- Noise levels will be monitored in order to minimize classroom disruption.

Playground Relocation Update

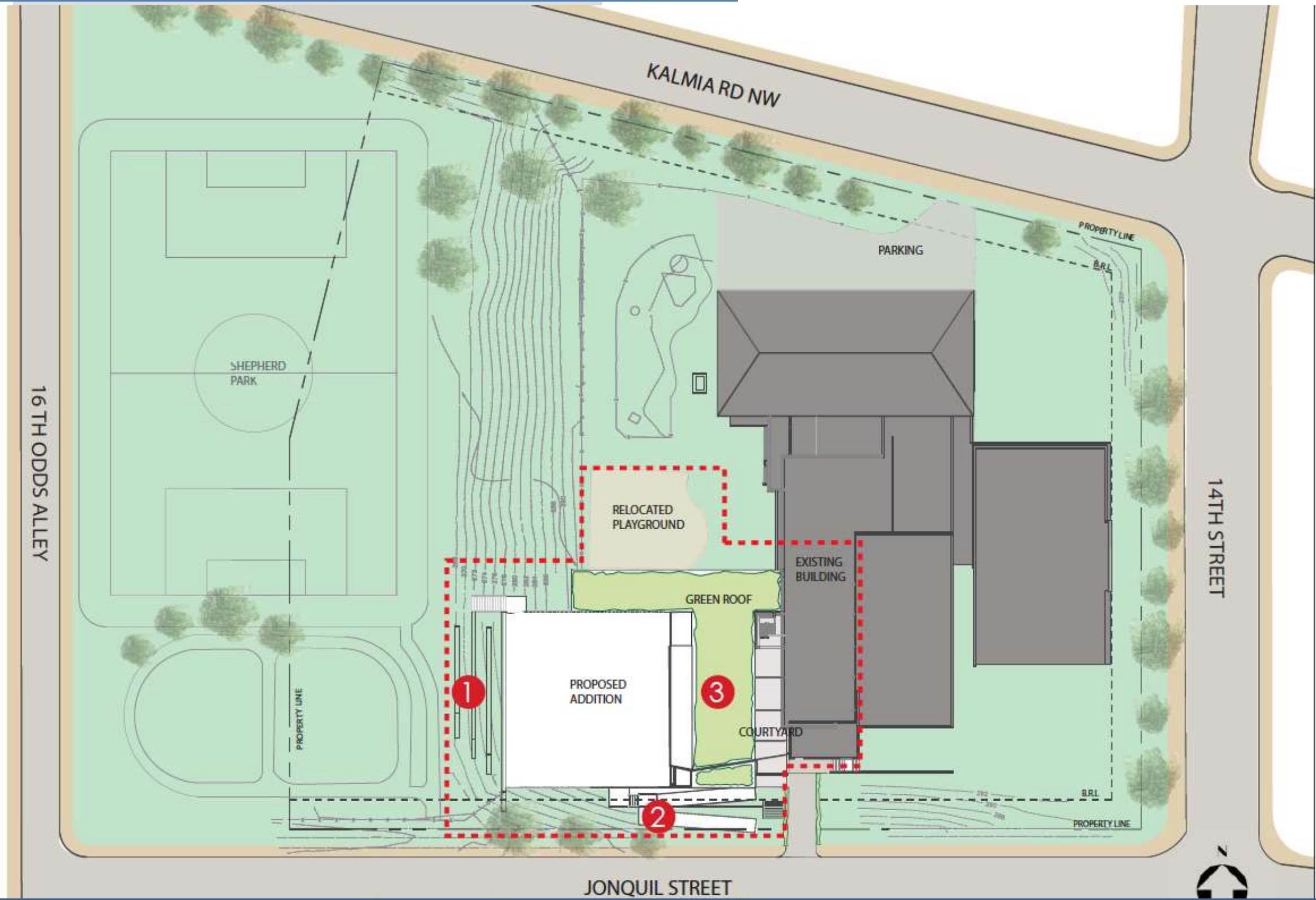


SHEPHERD ELEMENTARY SCHOOL

Section Two – Design Discussion

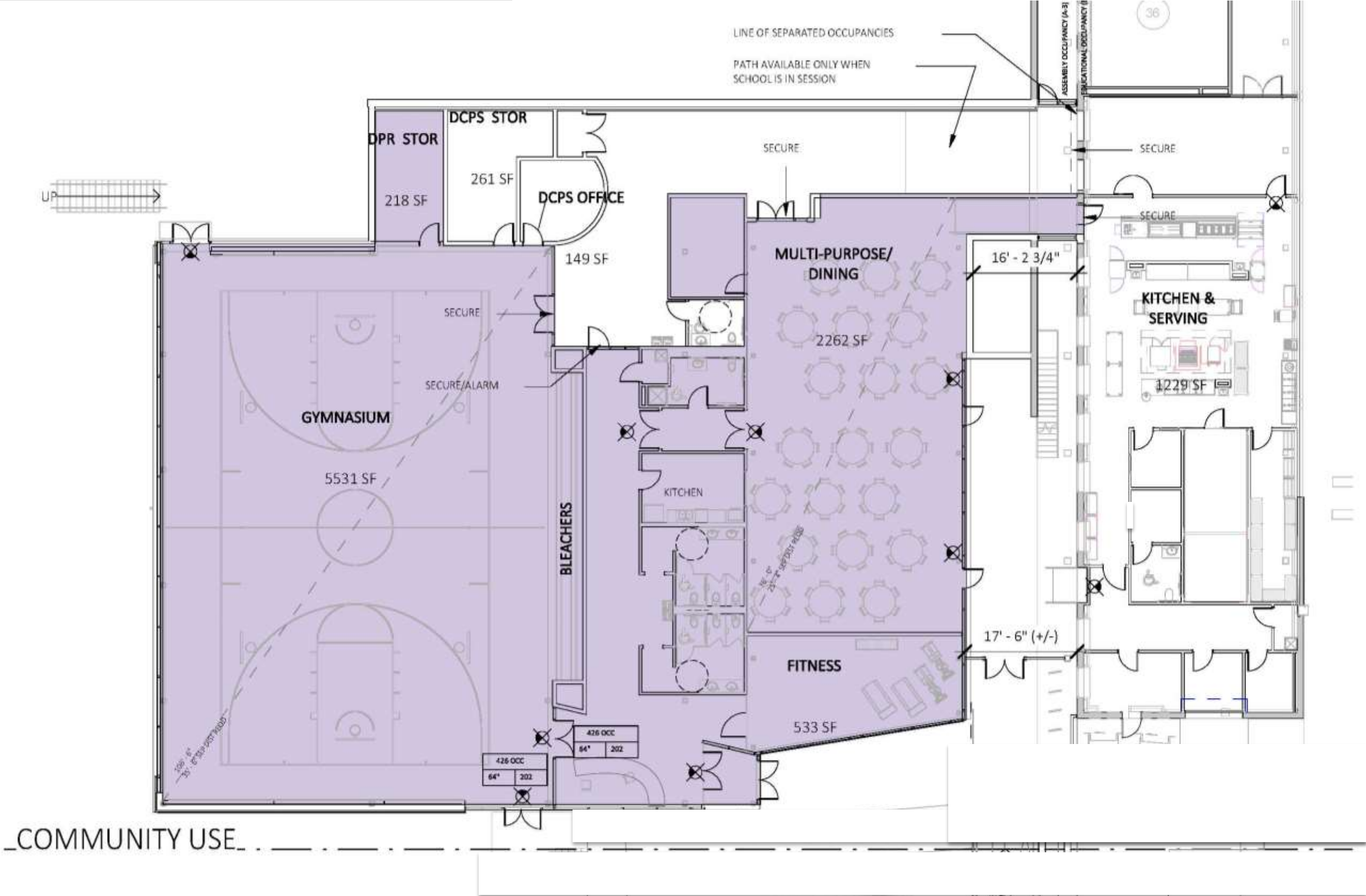


SITE AND LANDSCAPE PLAN



--- SCOPE OF WORK

DPR Evening & Saturday Usage



Exterior Skin Materials & Color Palette



Swiss Pearl
Color sample
photos



Rainscreen Pattern Concept



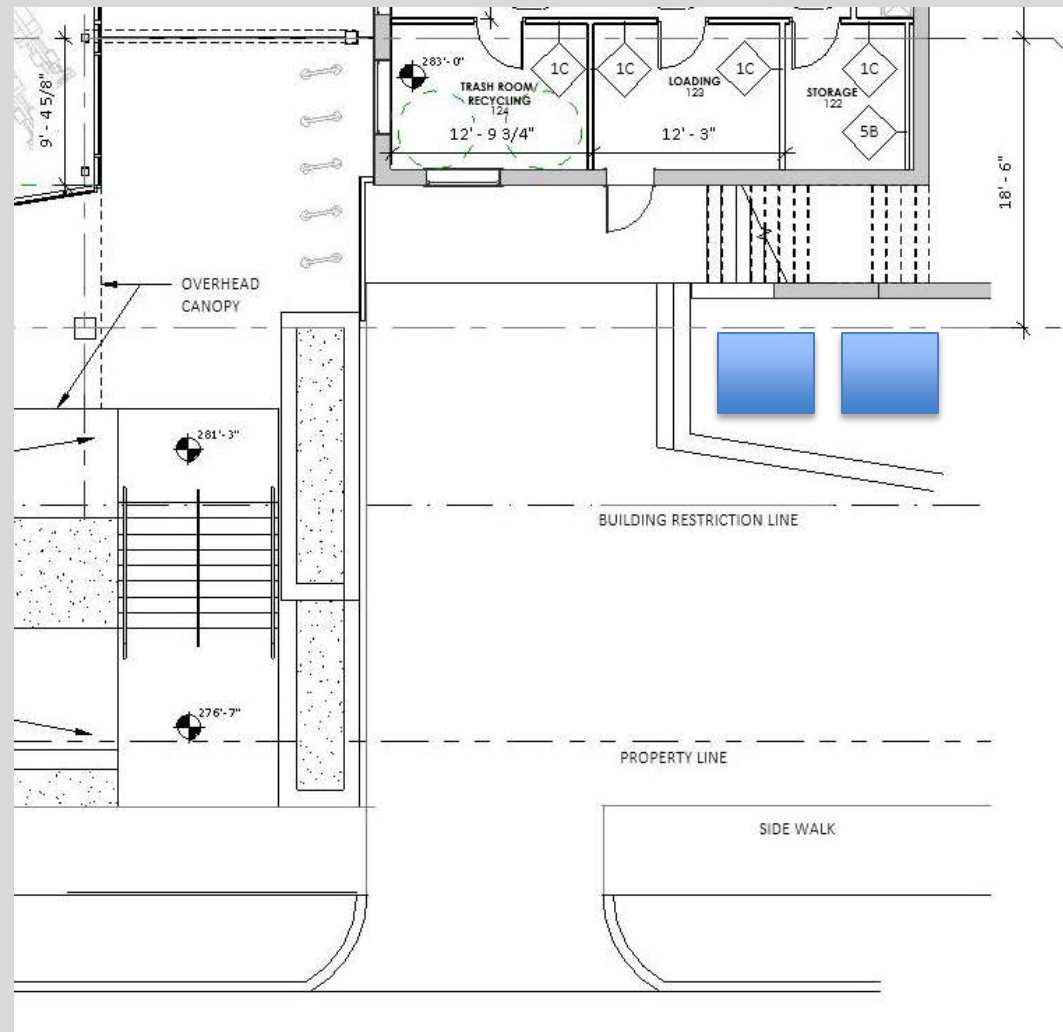
Dumpster Enclosure Fence

Wall Material: Plank wall

Wall Style/Color:

Horizontal/Cedar

Gate Material: Woodgrain
textured PVC



EXISTING CONDITION



*PROPOSED ENCLOSURE
EXAMPLE*



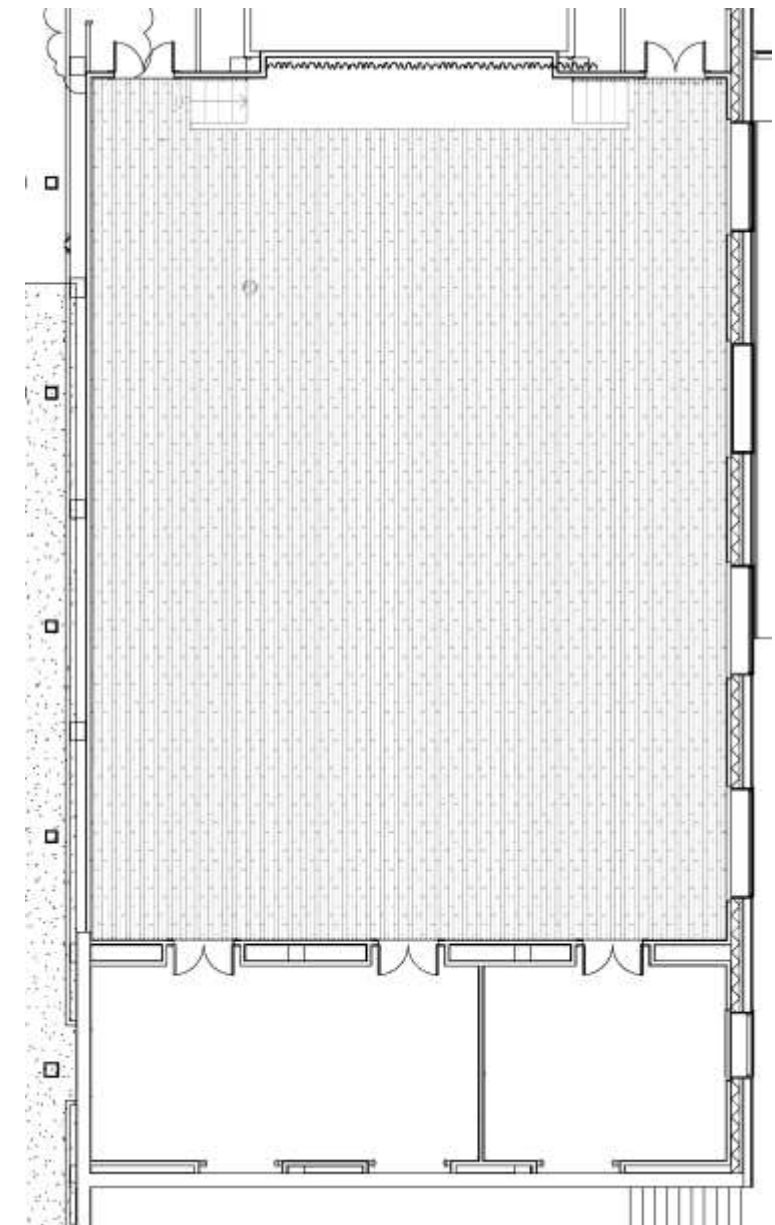
Existing MP Room Refresh



PROPOSED FLOORING COLOR PATTERN EXAMPLE

Refreshing MP Room

- New finishes, including:
 - Ceiling grid & tile
 - Flooring & Painting



Next Steps / Projected Schedule

- Construction Begins (Playground Relocation): September 2019
 - Relocated playground surfacing: Next Week (Oct 1-4)
- Construction (New Addition): Mid-October 2019
- Monthly Construction Updates
- Construction (DCPS Portion): Summer 2020
- Project Completion: Summer / Fall 2020

Points of Contact

DPR Project Manager

Brent Sisco, Interim Capital Planning & Design Officer

brent.sisco@dc.gov

(202) 673-7647

DGS Point of Contact

John Stokes, Associate Director of External Affairs

John.stokes@dc.gov

(202) 288-7275

Project Website

www.dgs.dc.gov/page/shepherd-park-community-center