



DISTRICT OF COLUMBIA  
PUBLIC SCHOOLS



# SHEPHERD PARK COMMUNITY CENTER

## Community Meeting

### May 23, 2019





# AGENDA

1. Welcome + Introductions
2. Project Overview
3. Design Presentation
4. School v. Community Use
5. Construction Impact Plan
6. Projected Schedule
7. Points of Contact



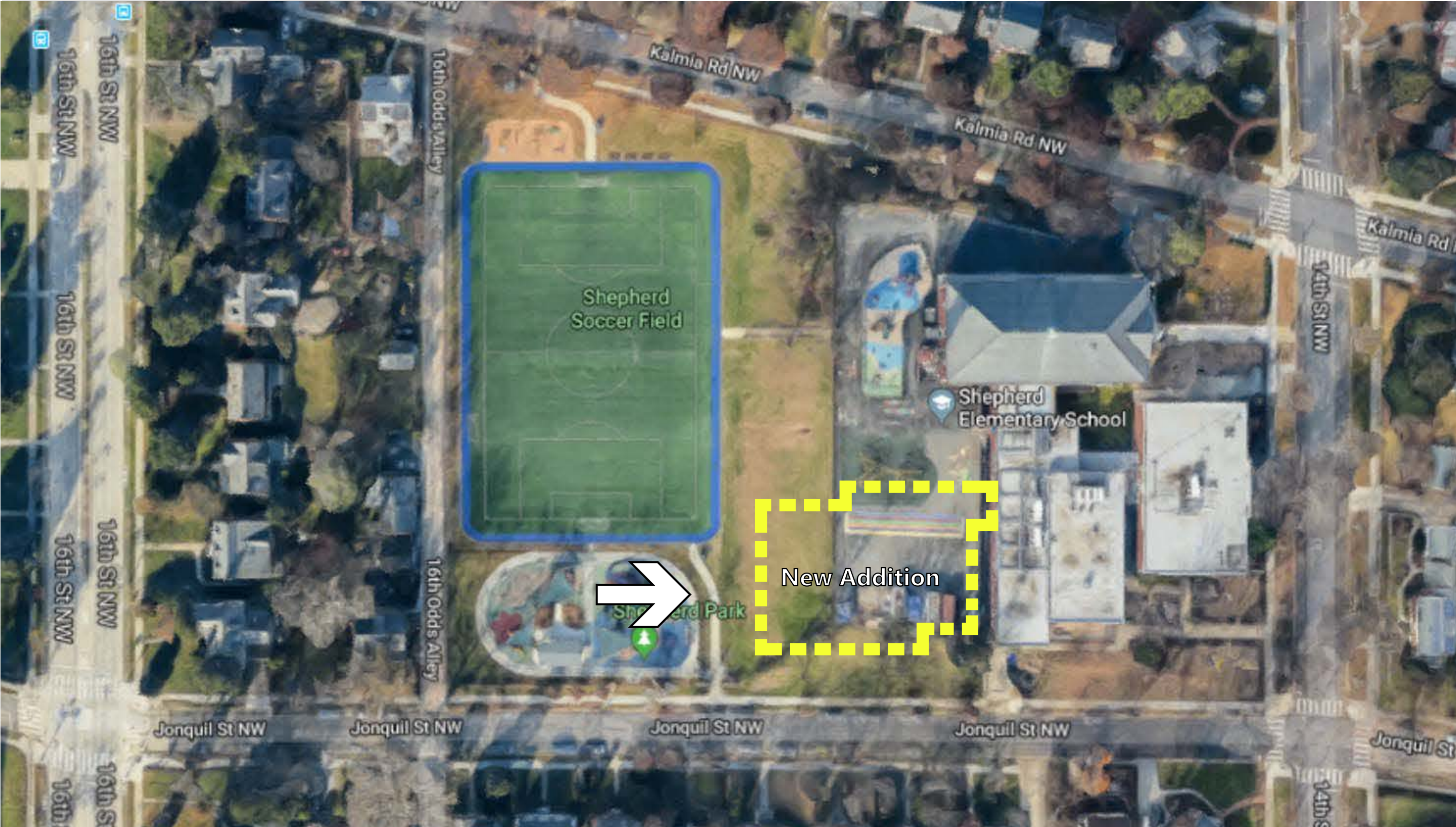


## PROJECT OVERVIEW

1. DPR received \$13.4M in FY 18-19 Capital Funding for the following:
  - Gymnasium, School Kitchen, School Dining / Multipurpose Room, Fitness Room, Warming Kitchen.
2. Shepherd Elementary in need of cooking kitchen and appropriately sized dining area
  - Currently four (4) lunch shifts with limited dining space.
3. DPR/DGS have hired a Design Build Team to produce architectural drawings and to complete the construction.
  - Note that DCPS and safety of students is the **Priority**. DCPS will have access to the shared spaces during the school day and until all students have left for the day (6:30 PM).

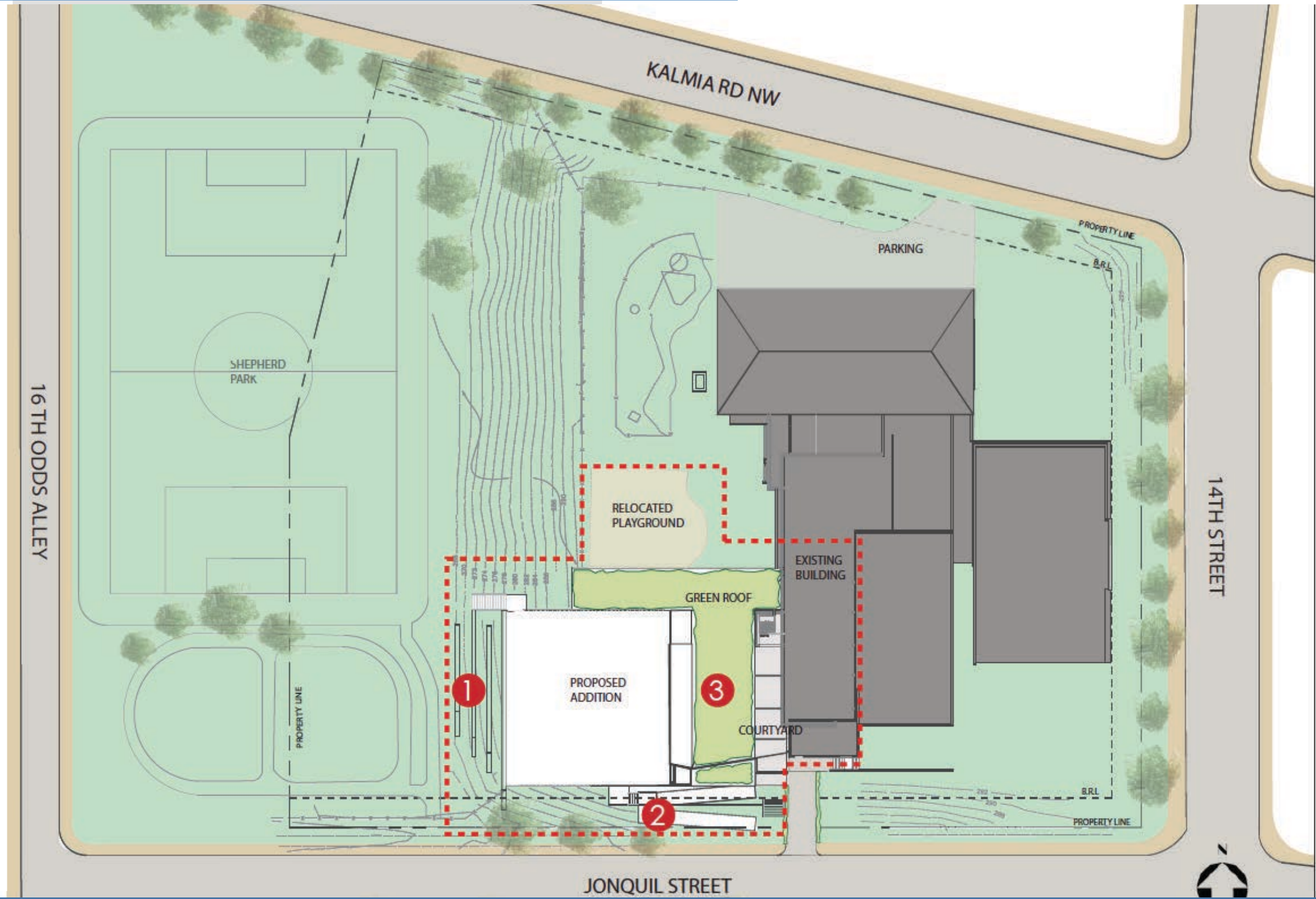


# AERIAL VIEW OF SITE





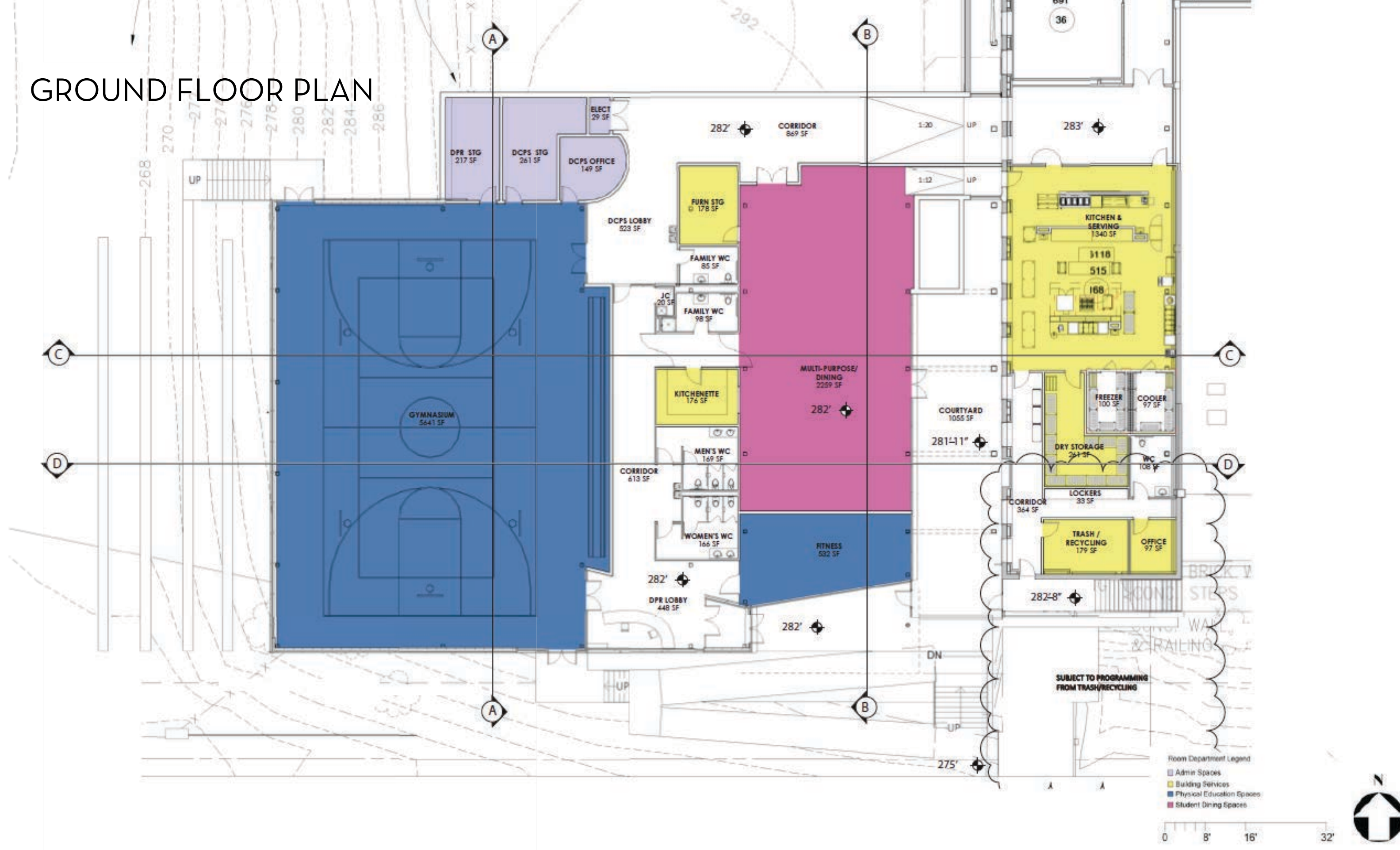
# SITE AND LANDSCAPE PLAN



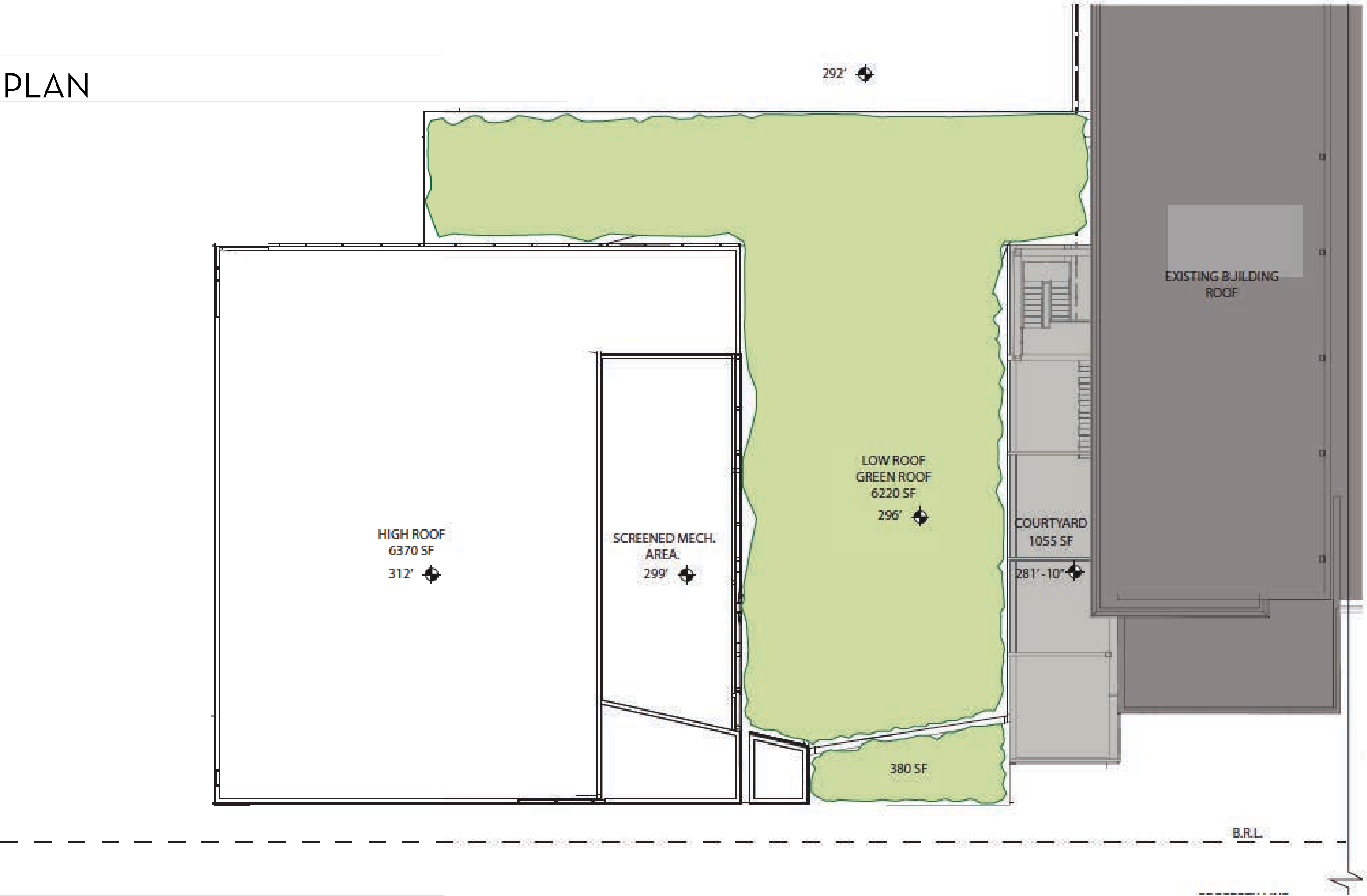
--- SCOPE OF WORK



GROUND FLOOR PLAN



ROOF PLAN





# ELEVATIONS

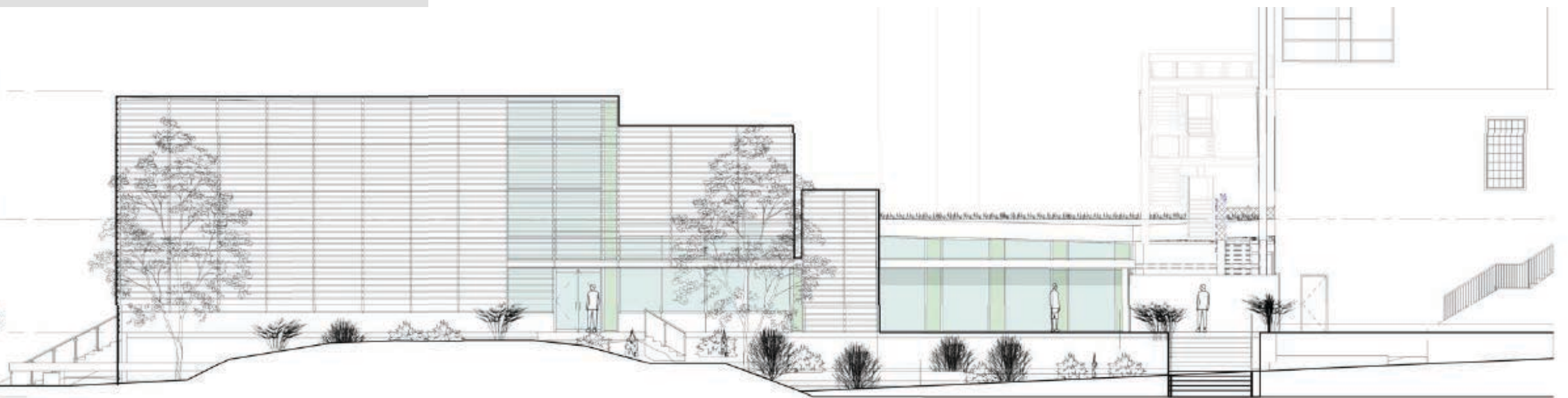


ADDITION HIGH  
ROOF  
312' - 0"

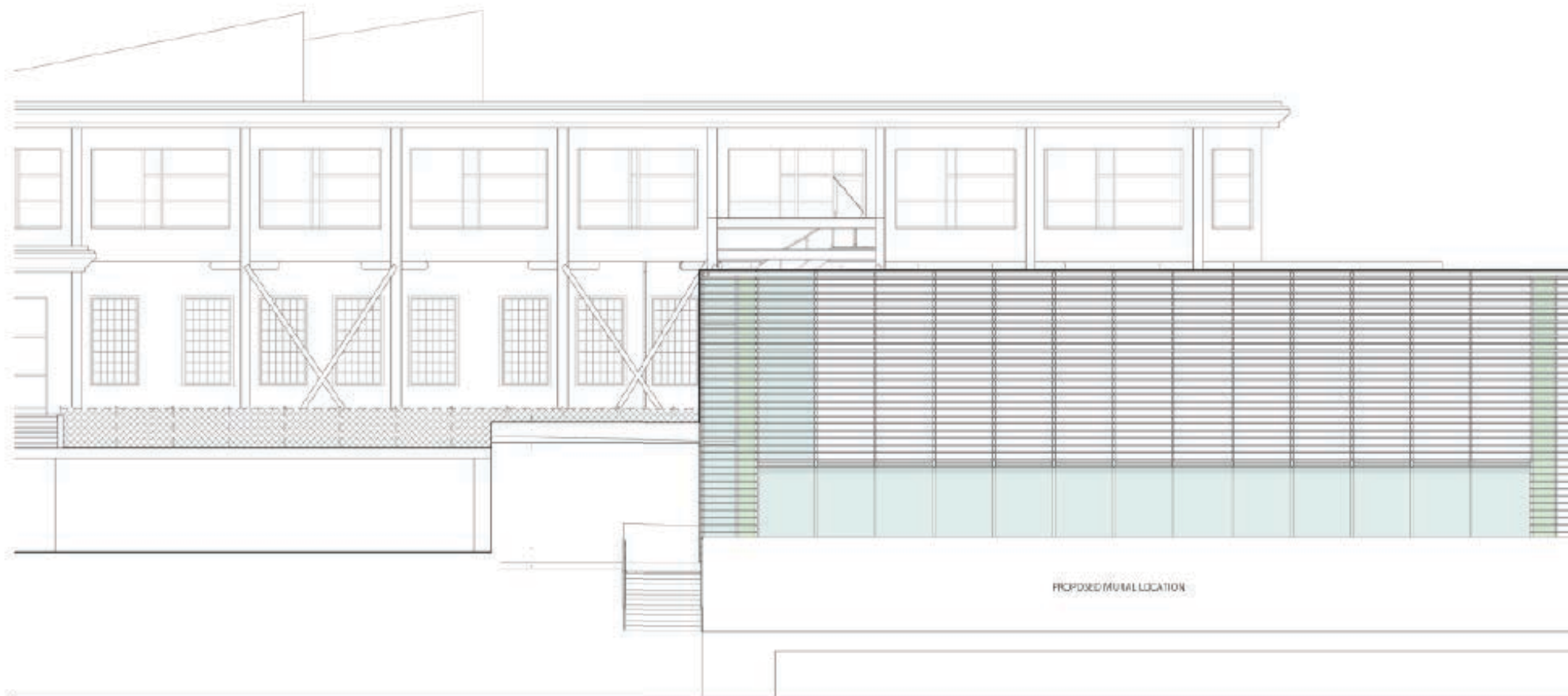
ADDITION LOW  
ROOF  
296' - 0"

ADDITION  
GROUND FLOOR  
282' - 0"

SIDEWALK  
274' - 0"



SOUTH



ADDITION HIGH  
ROOF  
312' - 0"

ADDITION LOW  
ROOF  
296' - 0"

ADDITION  
GROUND FLOOR  
282' - 0"

SIDEWALK  
274' - 0"

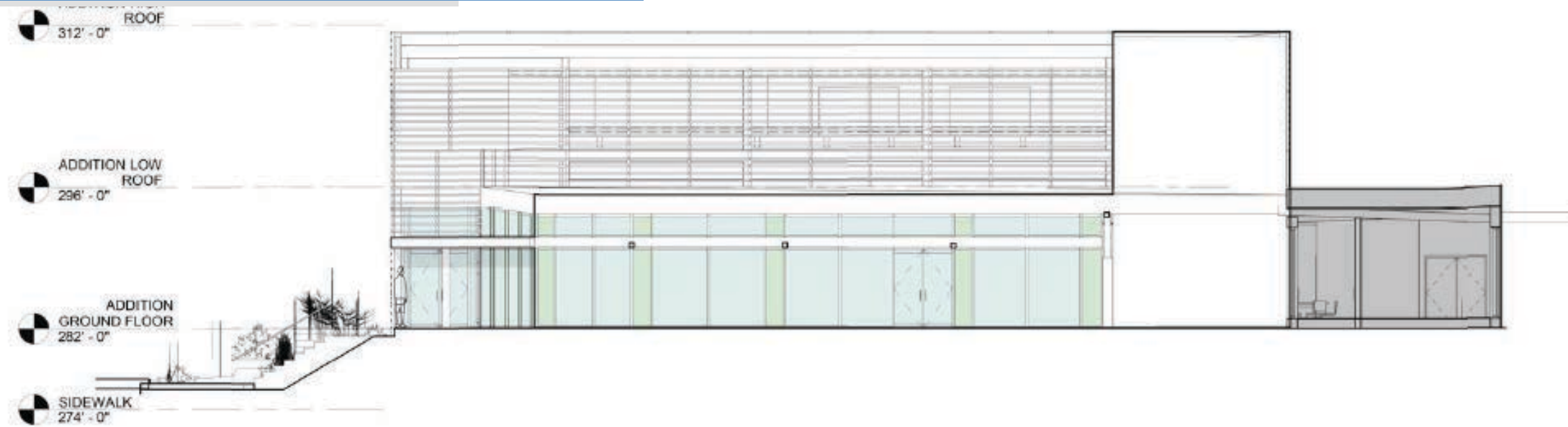
SOCCER FIELD  
LEVEL  
269' - 0"

## SHEPHERD PARK COMMUNITY CENTER

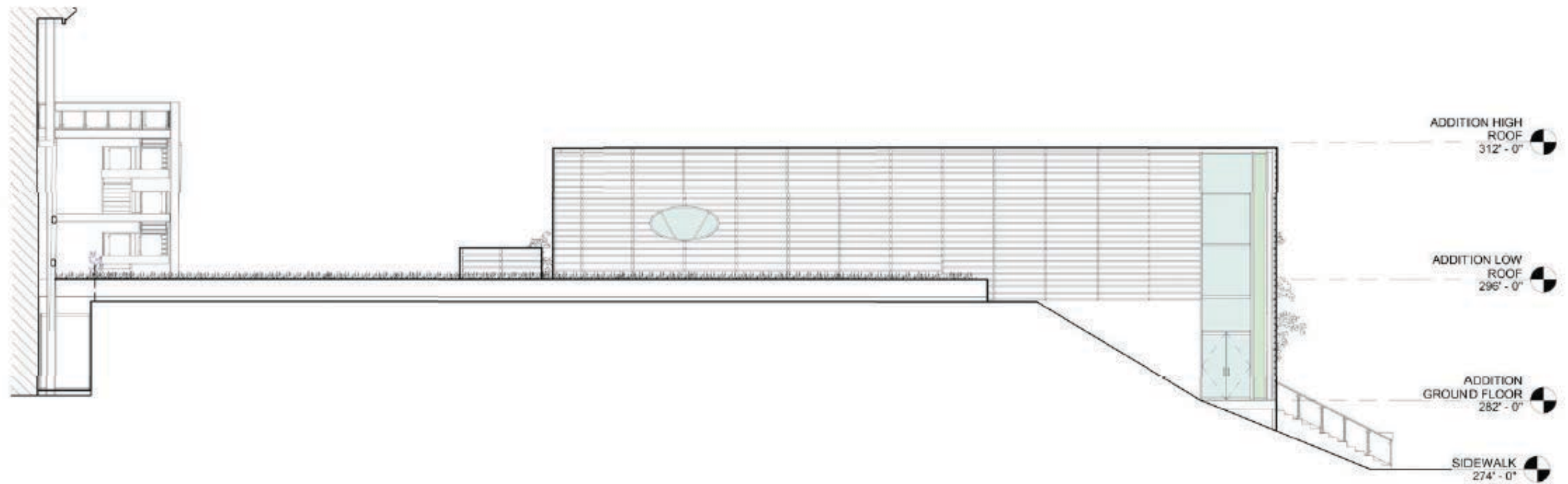




# ELEVATIONS



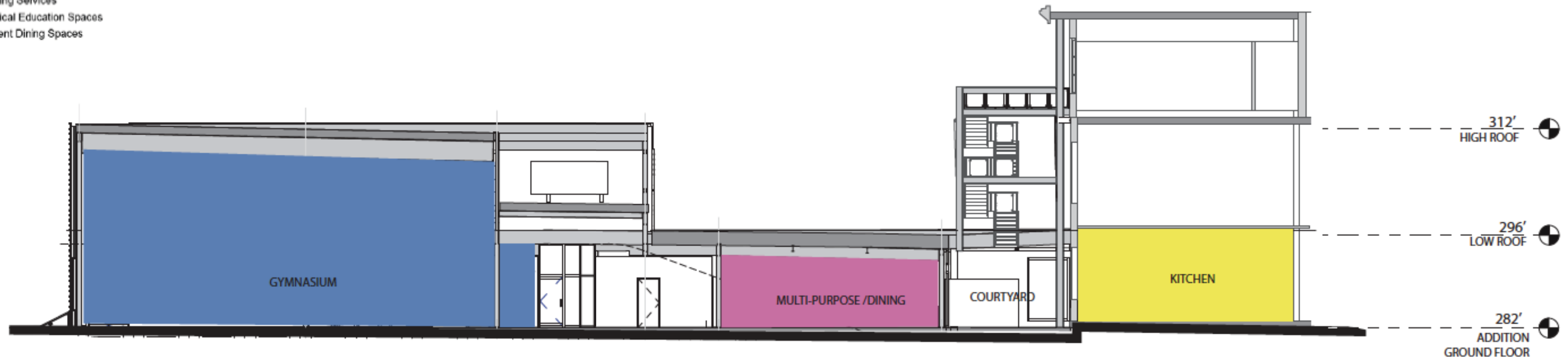
EAST





# SECTIONS

- Room Department Legend
- Admin Spaces
  - Building Services
  - Physical Education Spaces
  - Student Dining Spaces

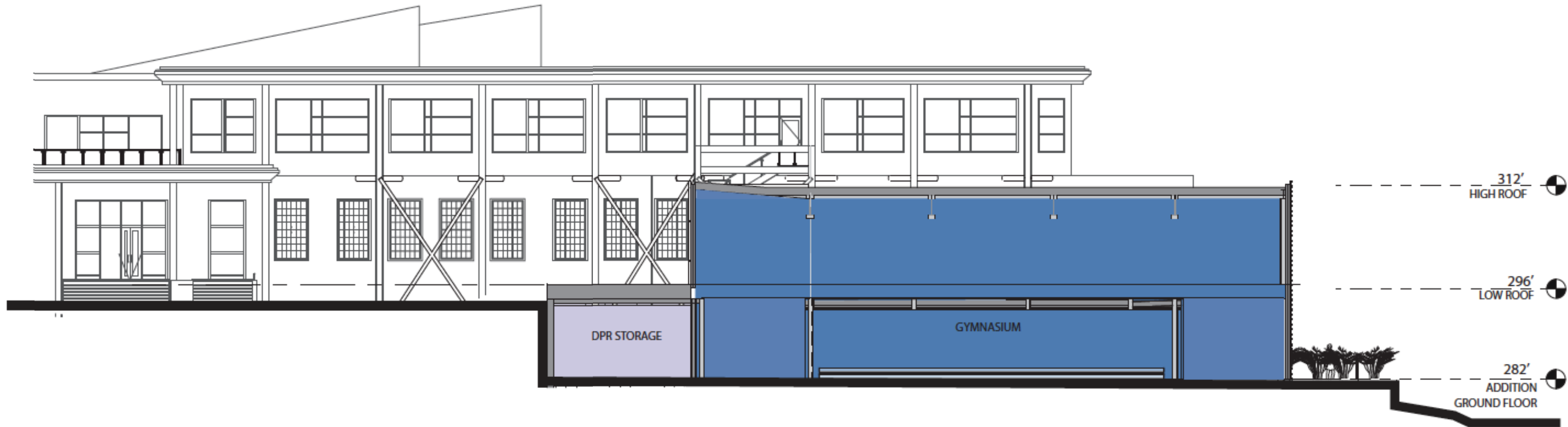


SECTION C-C

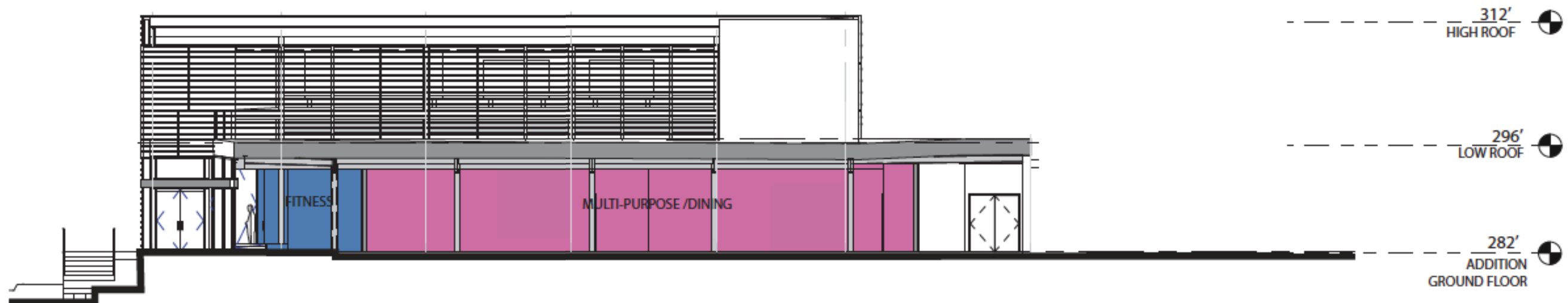




# SECTIONS

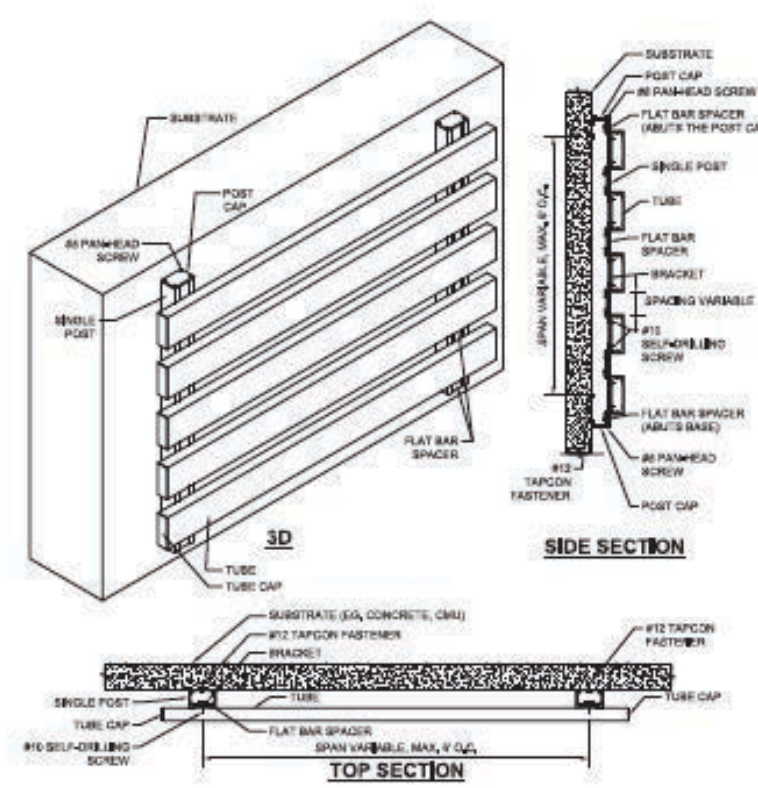
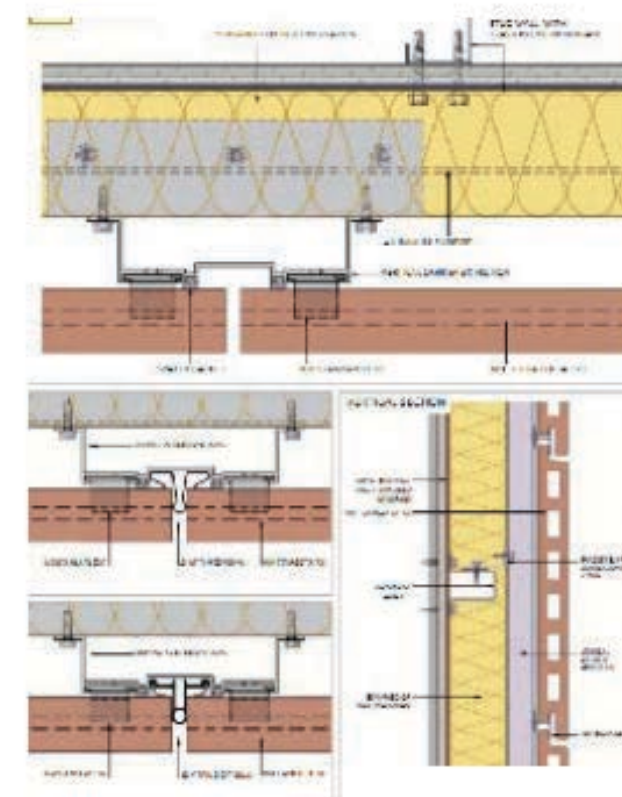
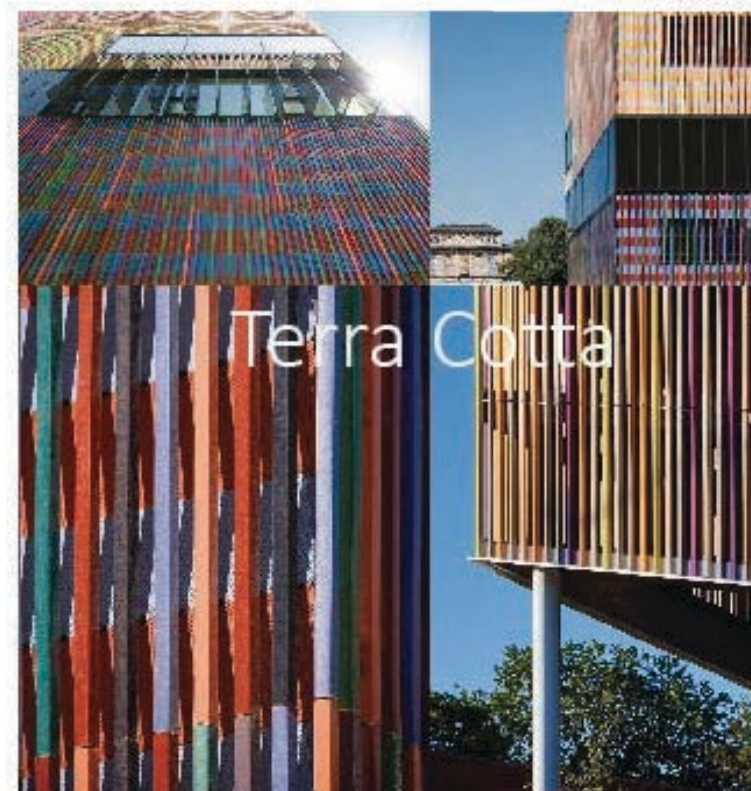


SECTION A-A





# EXTERIOR CLADDING / OPEN RAIN SCREEN





VIEW LOOKING NE ON JONQUIL STREET



**SHEPHERD PARK COMMUNITY CENTER**





# VIEW FROM JONQUIL STREET ENTRANCE



**SHEPHERD PARK COMMUNITY CENTER**





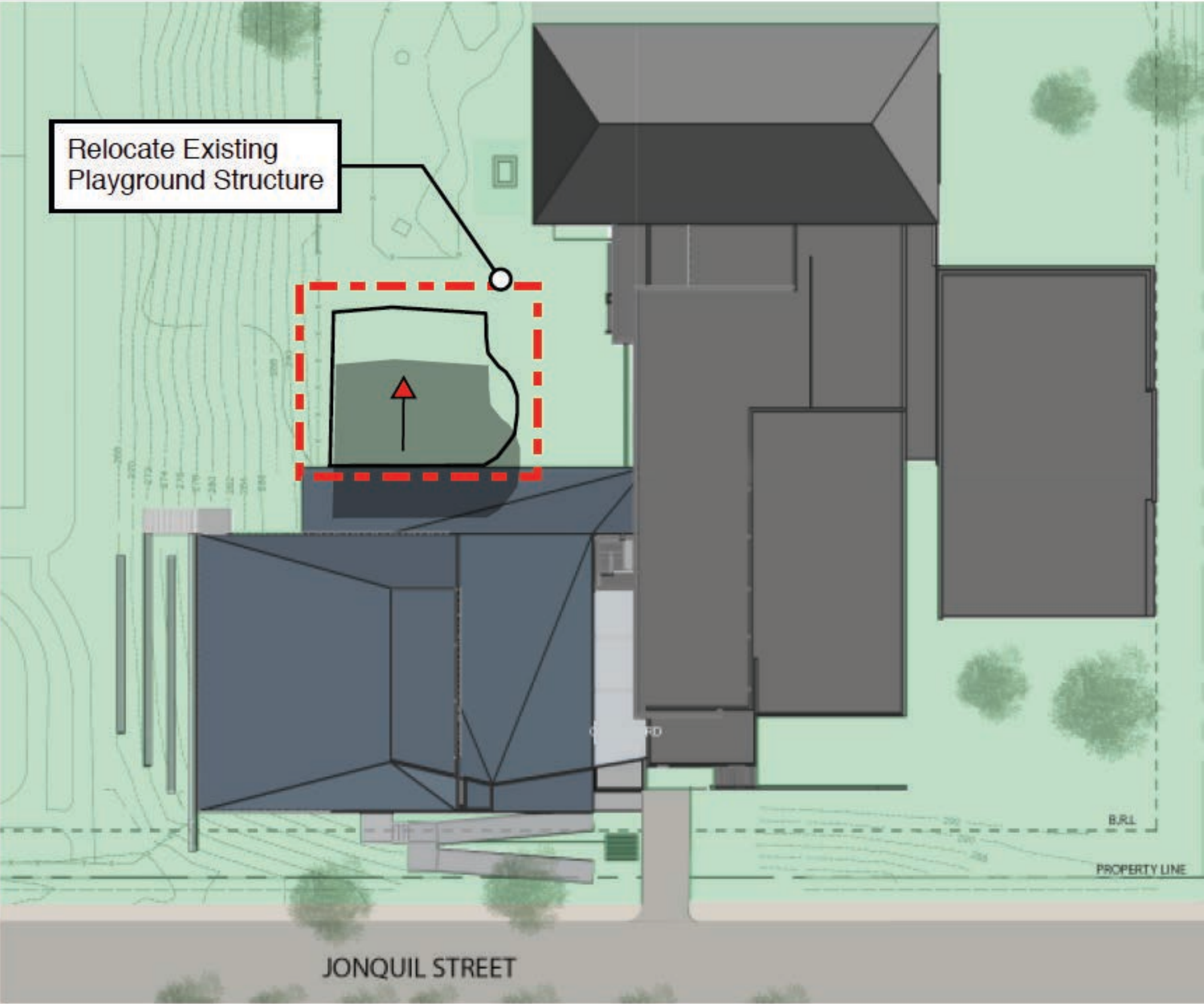
# EXISTING MP ROOM REFRESH



## Refreshing MP Room

- New finishes, including:
  - Ceiling grid repairs
  - Painting
  - Flooring

# PLAYGROUND PHASING PLAN





# Shepherd Rec. Center Conceptual Site Logistics & Impact Plan

Maintain Stair Egress

Egress Path A from Stair During Construction

Maintain Safe Play Space During School Year

Relocate Play Structure Over Summer

Limited Construction Access as Required from Kalmia Rd.

No Impact to Playground / Park Space

Sheeting & Shoring

Safety Fence & Wind Screen

Access / Lay Down & Staging Area

Maintain Entrance to Park

Underpinning of Existing Egress Stair

Egress Path B from Stair During Construction

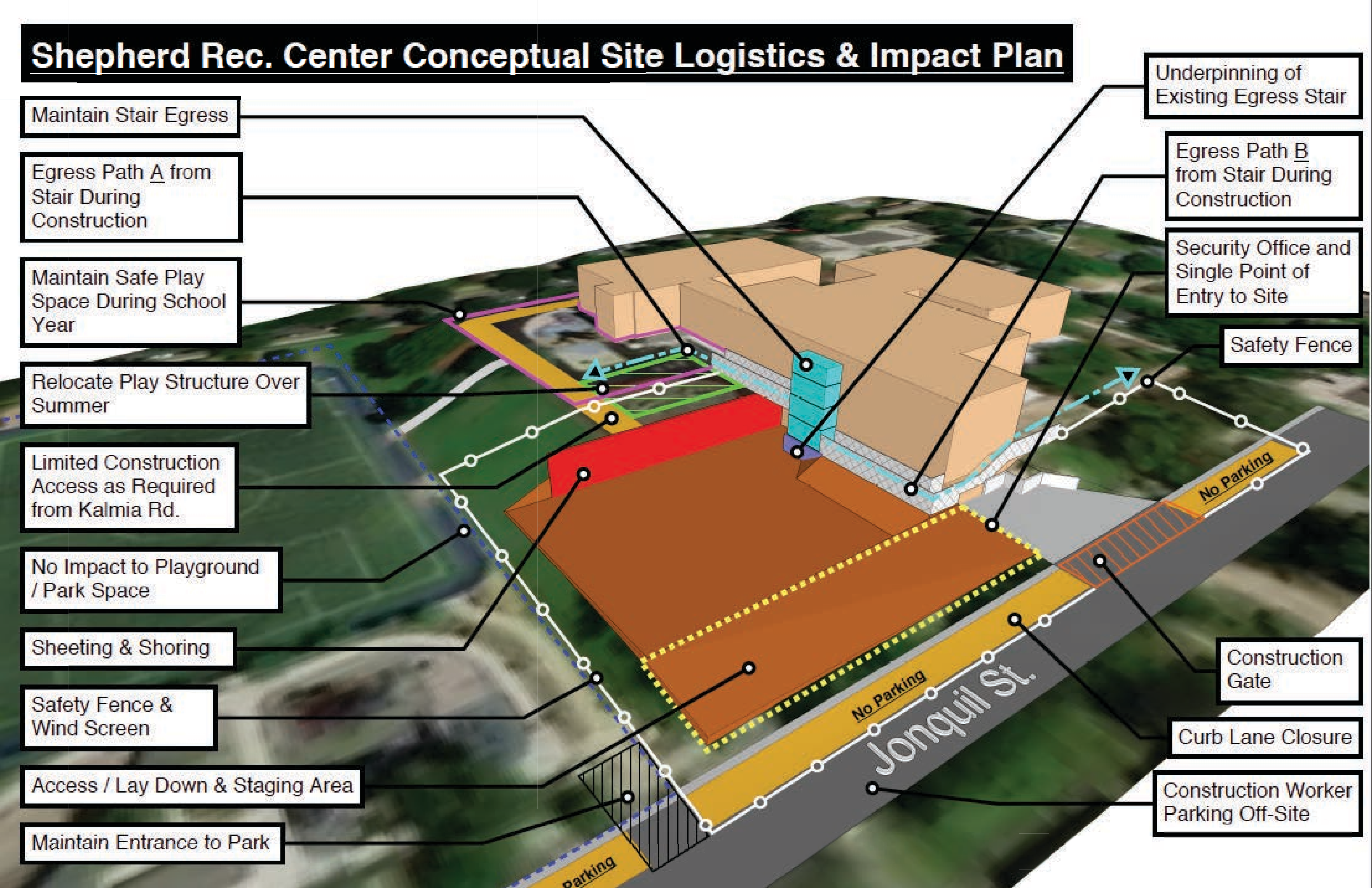
Security Office and Single Point of Entry to Site

Safety Fence

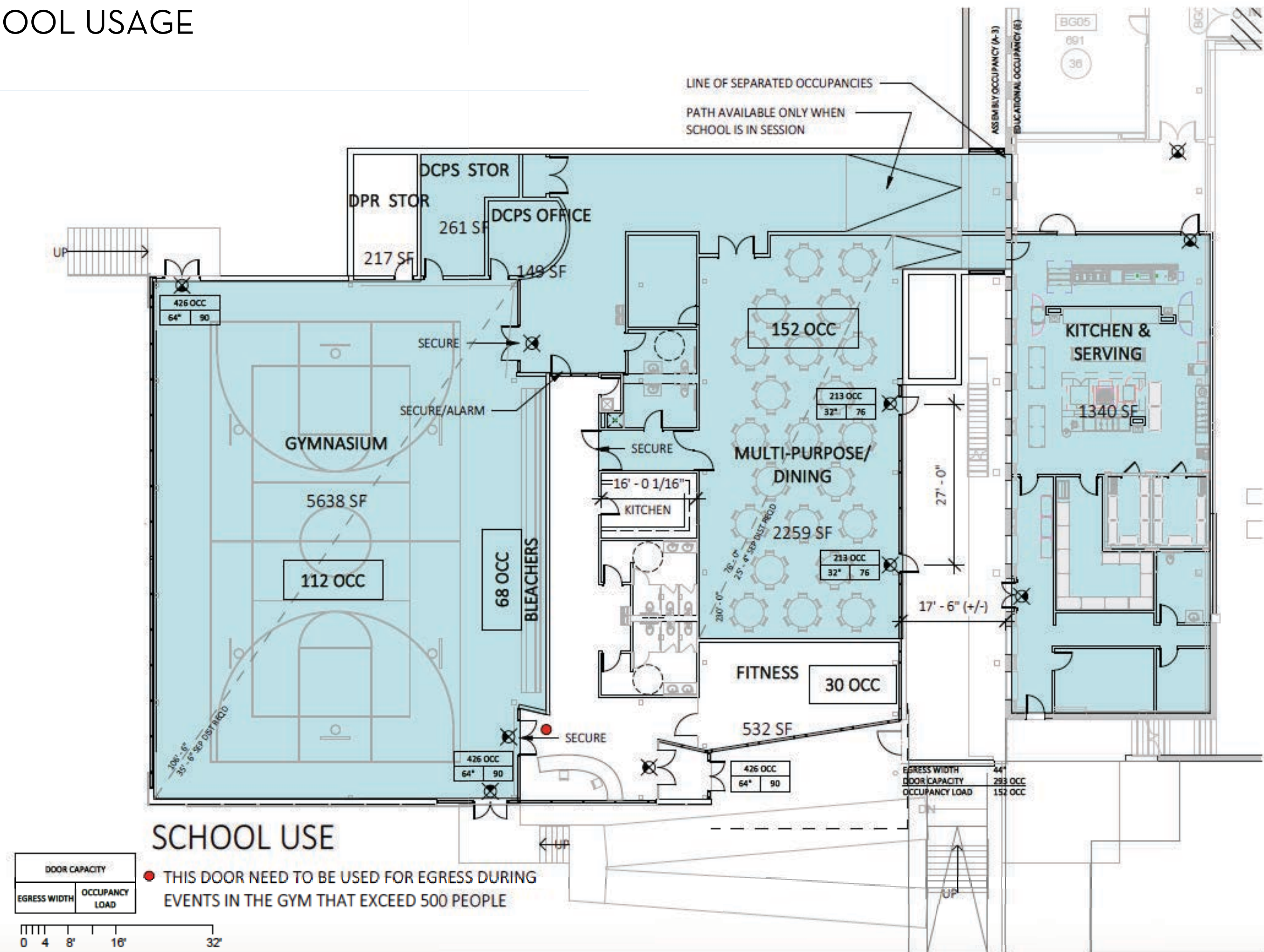
Construction Gate

Curb Lane Closure

Construction Worker Parking Off-Site

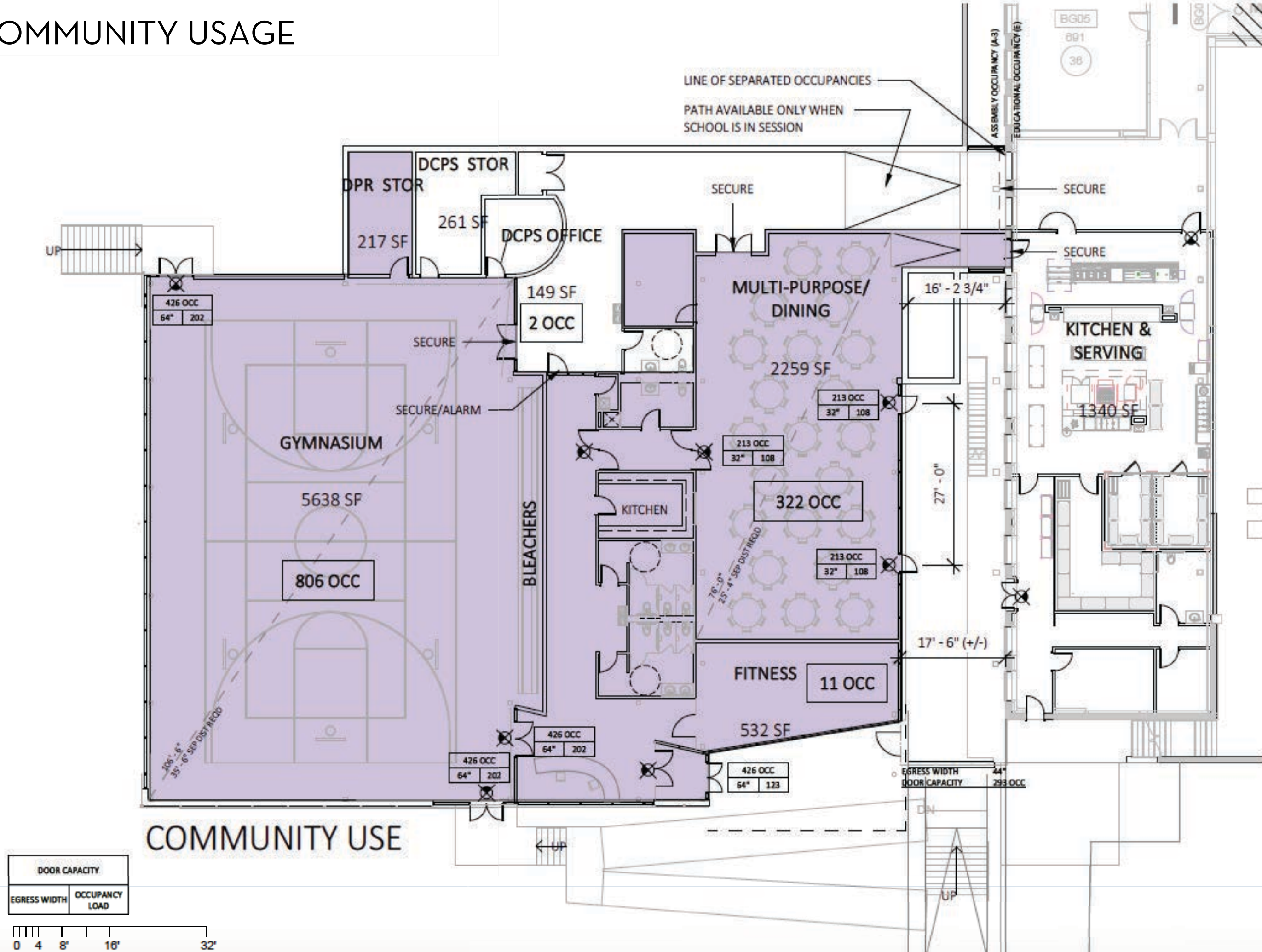


## SCHOOL USAGE





# COMMUNITY USAGE





# PROJECTED SCHEDULE

## Project Awarded:

- Winter 2019

## Design/Permitting

- Spring - Summer 2019

## Construction (Comm Ctr)

- Fall 2019

## Construction (DCPS Portion)

- Summer / Fall 2020

## Project Completion

- Summer / Fall 2020



*Marvin Gaye Recreation Center Fitness Room*



## POINTS OF CONTACT

### **DPR Project Manager**

Brent Sisco, Capital Projects

[brent.sisco@dc.gov](mailto:brent.sisco@dc.gov)

(202) 615-9824

### **DGS Point of Contact**

Wayne Gore, Comm. Outreach

[wayne.gore@dc.gov](mailto:wayne.gore@dc.gov)

(202) 576-6192

### **Project Website**

[www.dgs.dc.gov/page/shepherd-park-community-center](http://www.dgs.dc.gov/page/shepherd-park-community-center)

