

# WATKINS ELEMENTARY SCHOOL

MAY 19, 2015

Perkins Eastman DC





# Summer 2015 Schedule

- Window Delivery – May 30
- Installation begins on 4<sup>th</sup> Floor
  
- DPR Programs will not occur this summer



A photograph of a school building and a sports field at dusk. The scene is dimly lit, with a blue and grey color palette. In the background, a large, multi-story brick school building with many windows is visible. In the foreground, a large, dark sports field with white yard lines is shown. A tall stadium light pole stands in the middle ground. A semi-transparent, light-colored horizontal band is overlaid across the center of the image, containing the text "PROPOSED SCHEMATIC PLAN" in a serif font.

PROPOSED SCHEMATIC PLAN



PROPOSED  
SCHEMATIC PLAN

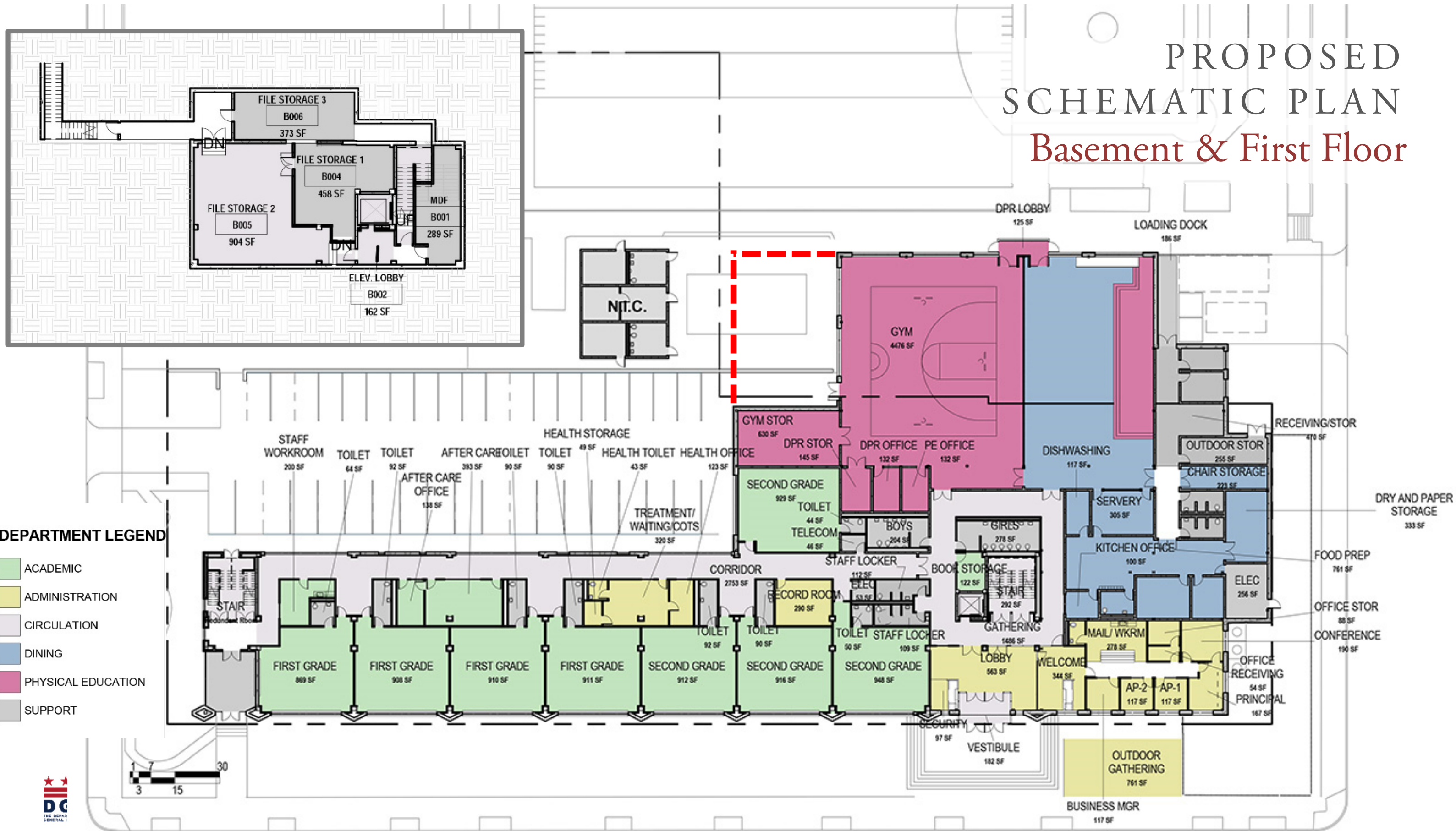
Site Plan





# PROPOSED SCHEMATIC PLAN

## Basement & First Floor



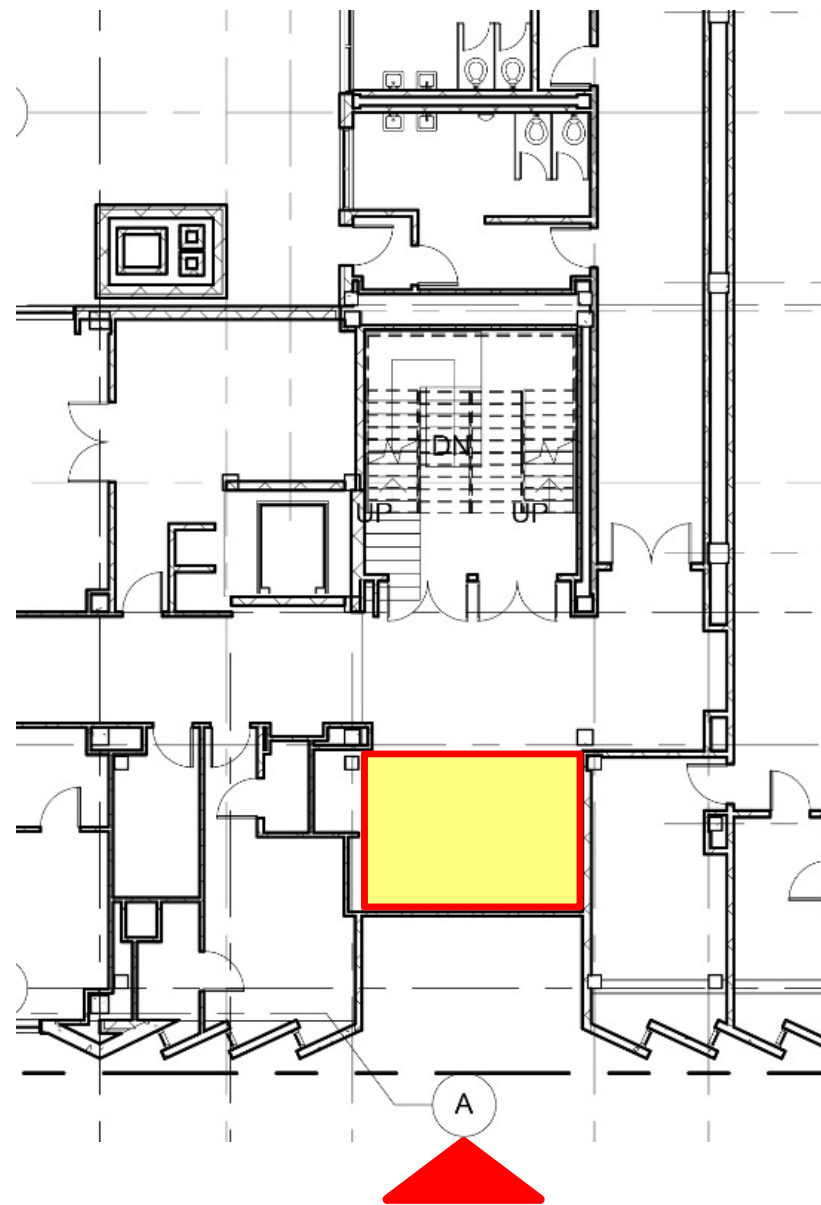


# PROPOSED SCHEMATIC PLAN

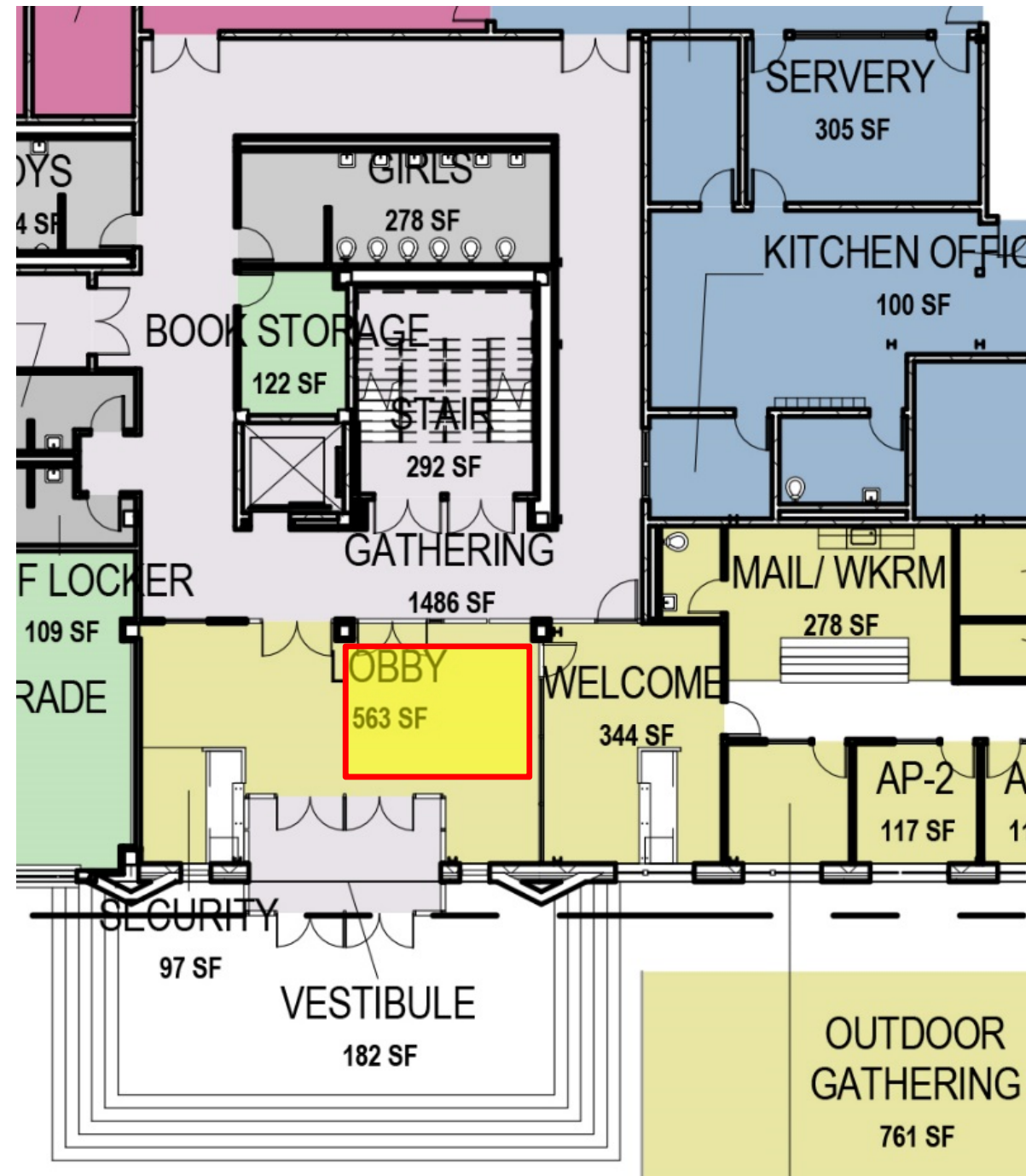
## Entry

Existing  
Approx. 200 sf  
(includes security desk)

Proposed  
563 sf Lobby  
182 sf Vestibule  
97 sf Security  
842 sf total



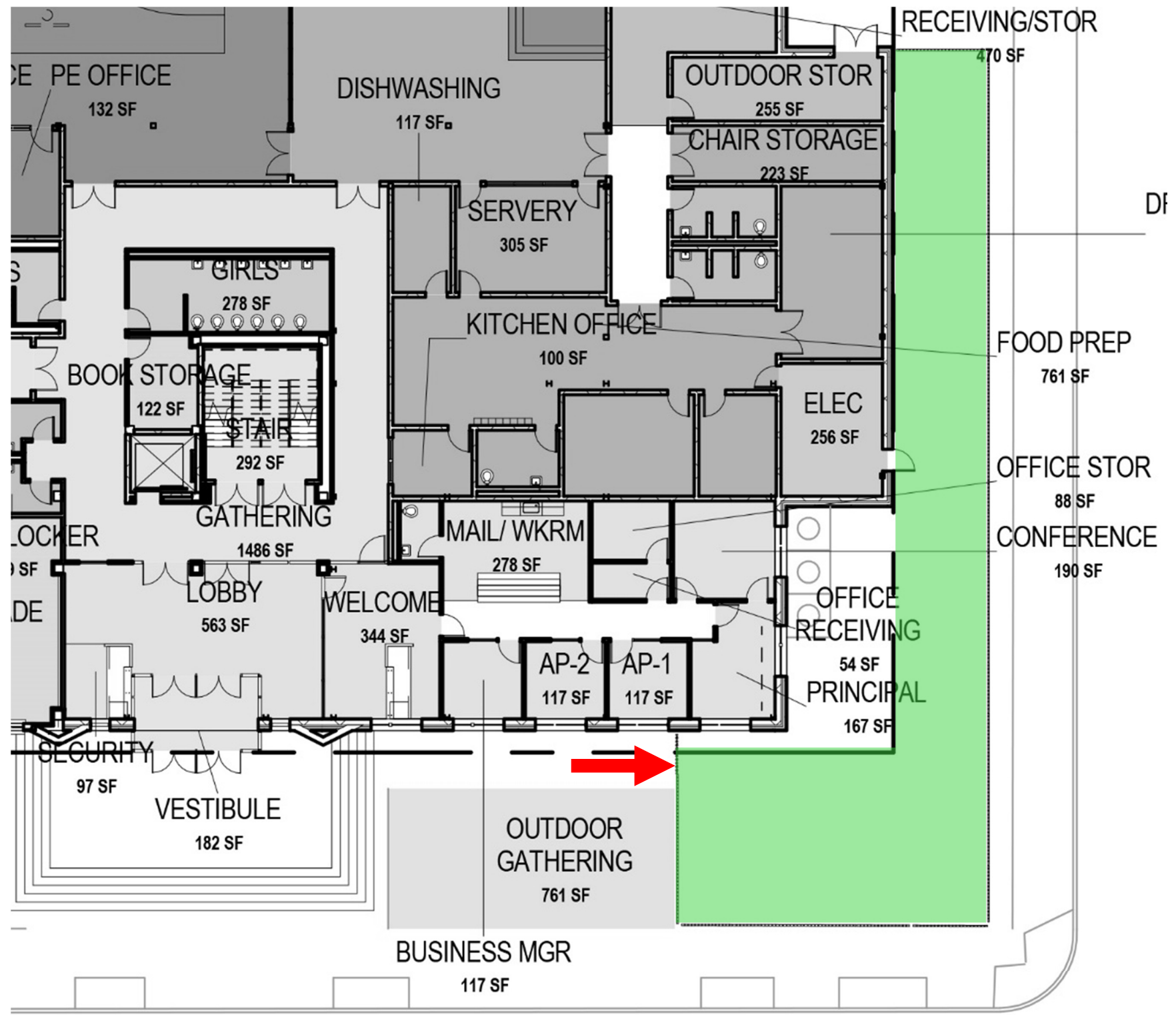
Existing





# PROPOSED SCHEMATIC PLAN

## Food Prints Garden



### Existing

2,580 sf (inside fence)

600 sf (outside fence)

3,180 sf total

### Proposed

2,250 sf (inside fence)

750 sf (Outdoor Gathering)

3,000 sf total

### Outdoor Gathering @ 750 sf

- Parent Gathering before/after school
- Outdoor classroom for Food Prints

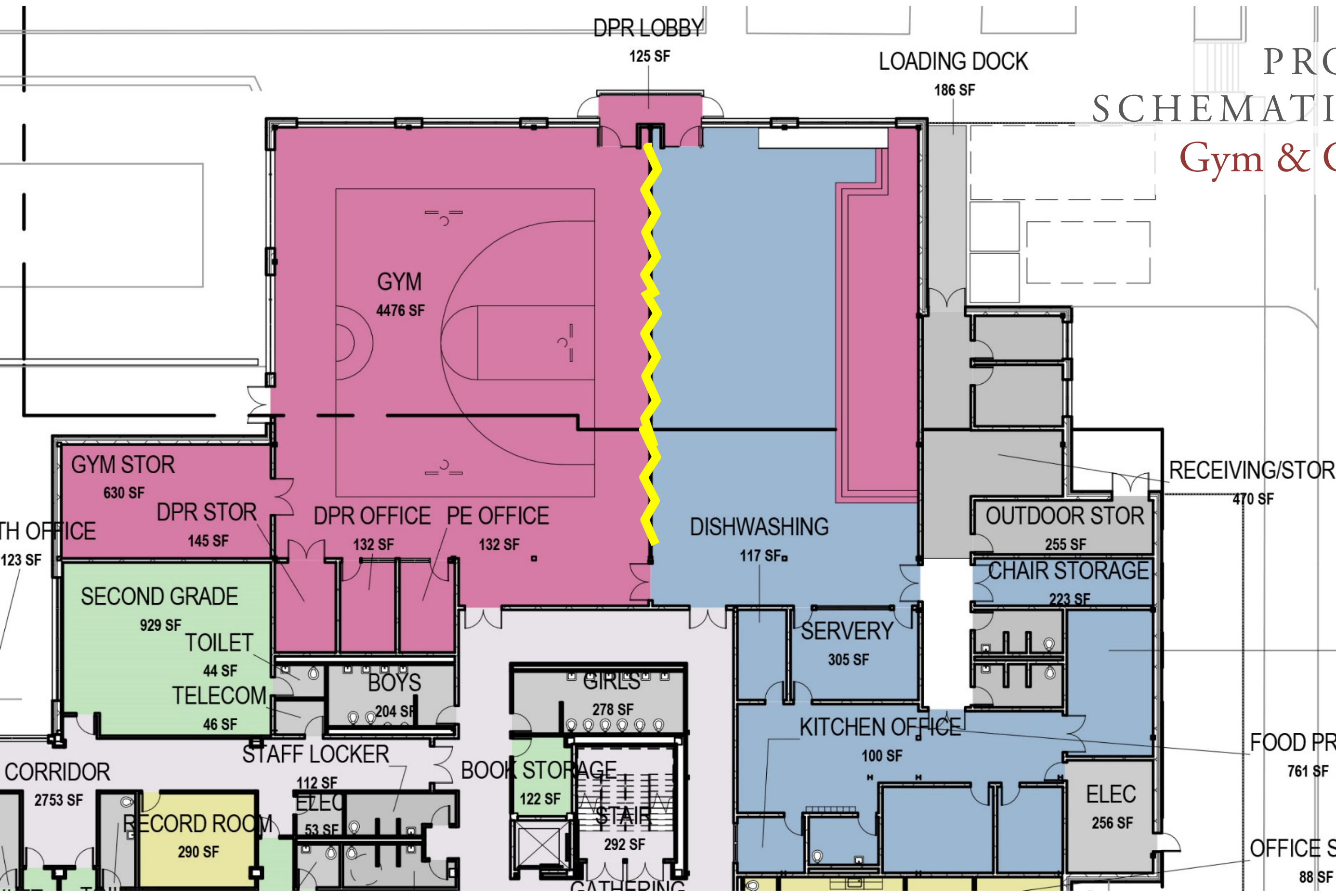


# PROPOSED SCHEMATIC PLAN

## Gym & Cafetorium

**DEPARTMENT LEGEND**

ACADEMIC	ADMINISTRATION	CIRCULATION	DINING	PHYSICAL EDUCATION	SUPPORT
----------	----------------	-------------	--------	--------------------	---------



DRY AND PAPER STORAGE  
333 SF

FOOD PREP  
761 SF

OFFICE STOR  
88 SF

RECEIVING/STOR  
470 SF

LOADING DOCK  
186 SF

DPR LOBBY  
125 SF

GYM  
4476 SF

GYM STOR  
630 SF

DPR STOR  
145 SF

DPR OFFICE  
132 SF

PE OFFICE  
132 SF

DISHWASHING  
117 SF

OUTDOOR STOR  
255 SF

CHAIR STORAGE  
223 SF

SERVERY  
305 SF

KITCHEN OFFICE  
100 SF

ELEC  
256 SF

SECOND GRADE  
929 SF

TOILET  
44 SF

TELECOM  
46 SF

BOYS  
204 SF

GIRLS  
278 SF

BOOK STORAGE  
122 SF

STAIR  
292 SF

STAFF LOCKER

ELEC  
53 SF

RECORD ROOM  
290 SF

CORRIDOR  
2753 SF

TH OFFICE  
123 SF

GATHERING

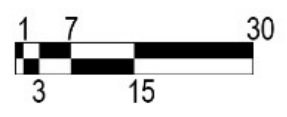
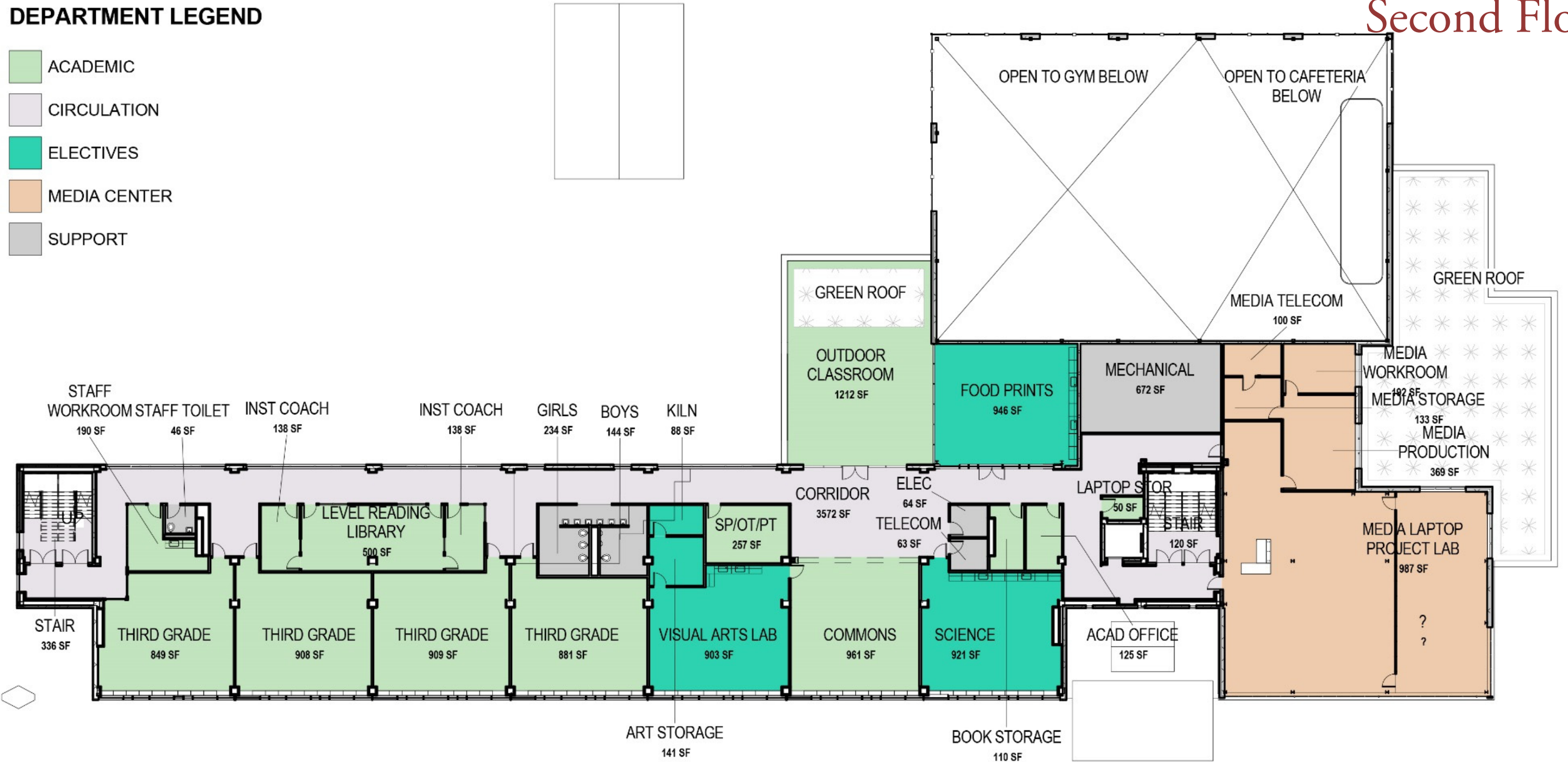


# PROPOSED SCHEMATIC PLAN

## Second Floor

### DEPARTMENT LEGEND

- ACADEMIC
- CIRCULATION
- ELECTIVES
- MEDIA CENTER
- SUPPORT





# PROPOSED SCHEMATIC PLAN

## Second Floor Electives

Outdoor Classroom @ +/-800 sf

Can be easily accessed from

- Visual Arts
- Science
- Food Prints
- Commons

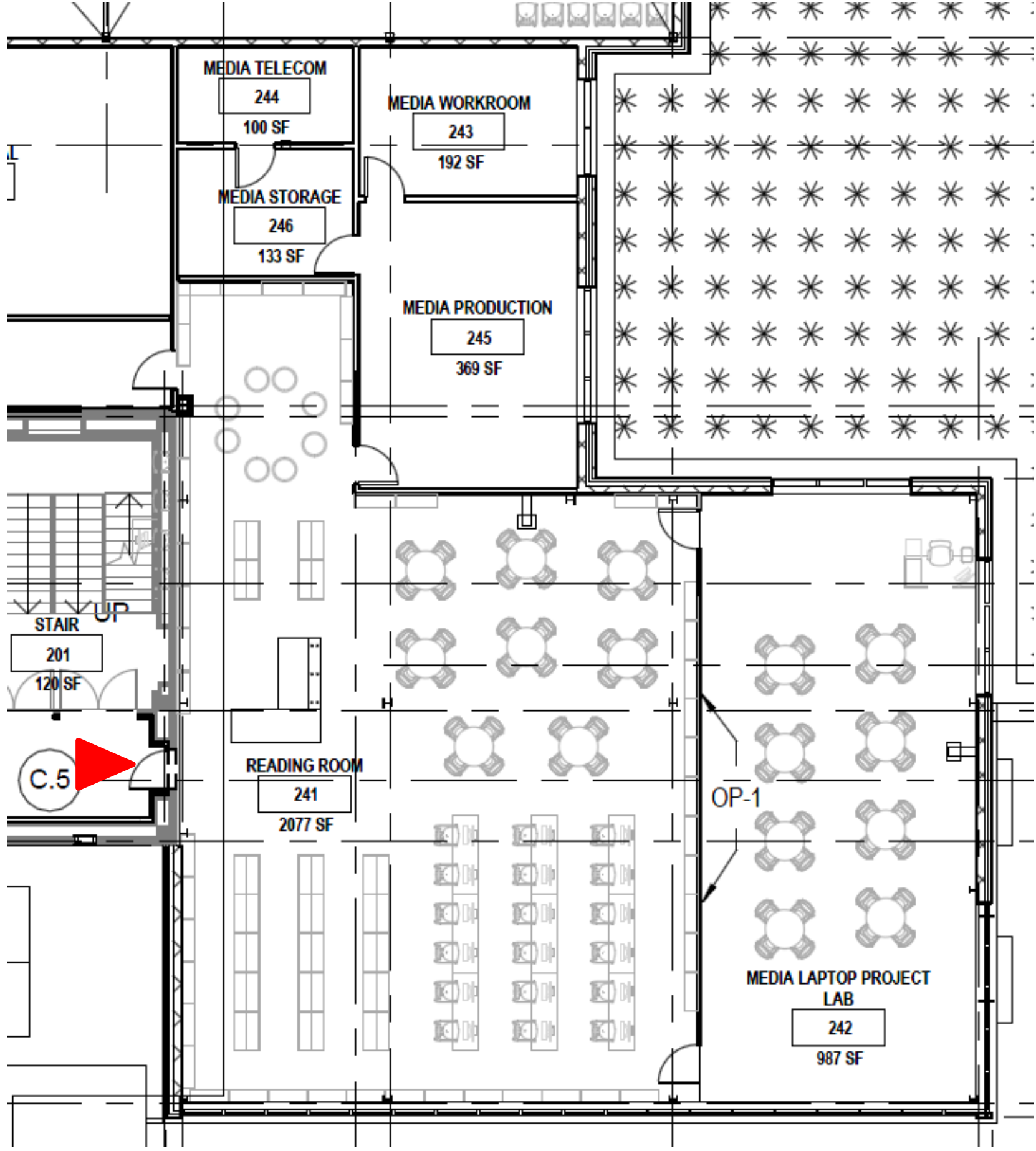
**DEPARTMENT LEGEND**

- ACADEMIC
- CIRCULATION
- ELECTIVES
- MEDIA CENTER
- SUPPORT





PROPOSED  
SCHEMATIC PLAN  
*Media Center*



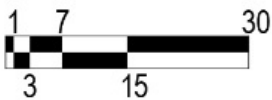
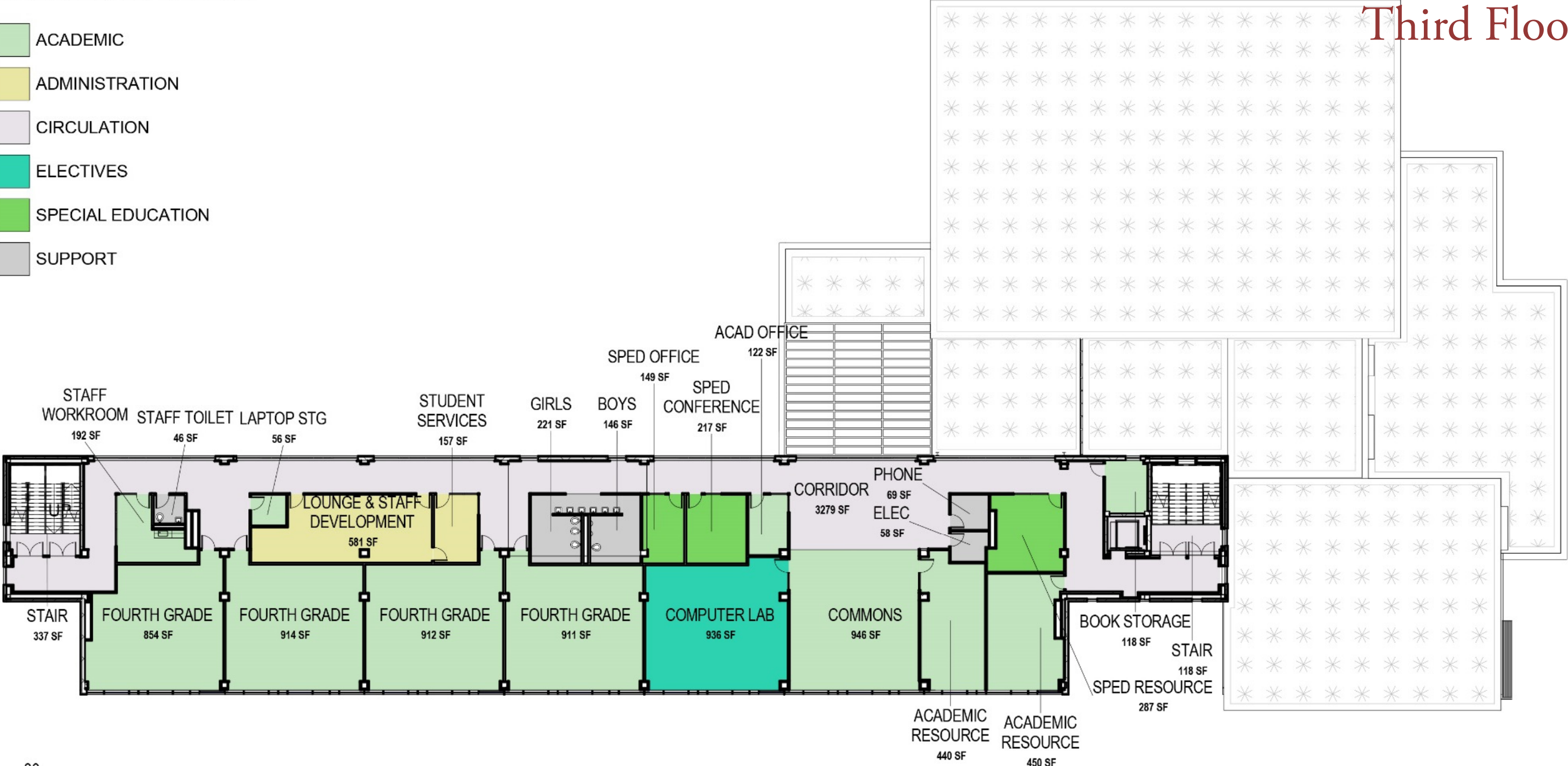


# PROPOSED SCHEMATIC PLAN

## Third Floor

### DEPARTMENT LEGEND

- ACADEMIC
- ADMINISTRATION
- CIRCULATION
- ELECTIVES
- SPECIAL EDUCATION
- SUPPORT





# PROPOSED SCHEMATIC PLAN

## Fourth Floor

### DEPARTMENT LEGEND

- ACADEMIC
- ADMINISTRATION
- CIRCULATION
- ELECTIVES
- SPECIAL EDUCATION
- SUPPORT

