

WARD 3 SHORT TERM FAMILY HOUSING (STFH)
PHASE II STFH FACILITY CONSTRUCTION UPDATE
June 7, 2019

50 Short-Term Family Housing Units	Dedicated Play & Common Areas	Supportive Programs	Community-Integrated Architectural Design
Substantial Completion December 31, 2019		New families are projected to move in starting March 2020	

Project Status:

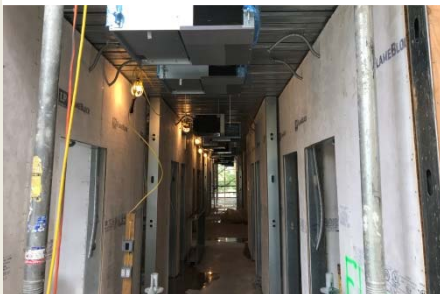
- Fifth floor elevated concrete slab have been poured.
- Fifth floor structural panels have been installed.
- Sixth floor elevated slab installation is in progress.
- Mechanical, Electrical and Plumbing (MEP) infrastructure are in progress on the first through the fourth floors
- Pepco Shut Down is complete and the New Transformer has been installed.

Community Advisory:

- Material deliveries will continue on a weekly basis providing structural steel, structural wall panels, metal decking, reinforcing steel, and wood to shore up each floor of the building.
Note: Smooth, the general contractor is on site and will provide flaggers who will control traffic and ensure safety during all deliveries.
- Concrete pours for the elevated decks will be on a two week per floor pouring cycle.

Questions? Please direct all inquiries to STFHprojects.dgs@dc.gov

MEP infrastructure



5th fl. Structural Panel Install



New Transformer installation



For your safety, only authorized personnel are allowed to access the construction sites