

WARD 3 SHORT TERM FAMILY HOUSING (STFH) PHASE I PARKING STRUCTURE PROJECT WEEKLY UPDATE June 8, 2018

Parking Structure supports
239 parking spaces

Supports both MPD and
STFH parking needs

Supports MPD impound
requirements

Community-Integrated
Architectural Design

Project Status:

- Asphalt pavement (slab on grade) demolition is complete
- Grading sub grade for new concrete paving
- Installation of underground Storm Water Management (SWM) system is ongoing
- First Concrete Pour concrete paving pour completed
- Preparation for the installation of the second concrete pavement (slab on grade).
- Finishes for the parking structure are ongoing.
- Installation of electrical and plumbing infrastructure is ongoing.

Community Advisory:

- 10 dump trucks will be entering and existing the site daily for the removal of spoils resulting from grading and delivery of materials in preparation for the installation of the concrete paving.
- Deliveries of concrete and stone will continue next week.

Questions? Please direct all inquiries to STFHprojects.dgs@dc.gov

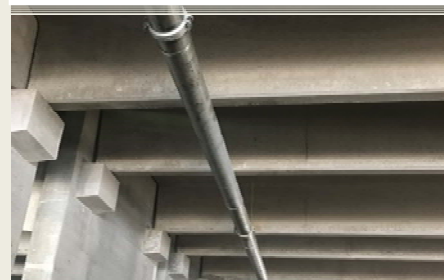
Concrete Delivery &
installation



Concrete slab installation



Plumbing infrastructure



For your safety, only authorized personnel are allowed to access the construction sites