

WARD 3 SHORT TERM FAMILY HOUSING (STFH) PHASE II STFH FACILITY CONSTRUCTION UPDATE July 15, 2019

50 Short-Term Family Housing Units	Dedicated Play & Common Areas	Supportive Programs	Community-Integrated Architectural Design
Substantial Completion December 31, 2019		New families are projected to move in starting March 2020	

Project Status:

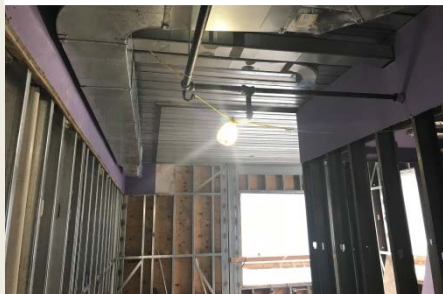
- Roof slab has been poured
- Mechanical, Electrical and Plumbing (MEP) infrastructure continue on all floors.
- Installation of Hollow Metal (HM) Door frame continues on the third floor.
- Placement of Fireproofing is on going.
- Metal pan stair system installation is ongoing.
- Fire proofing installation is ongoing.

Community Advisory:

- Material deliveries will continue on a weekly basis providing structural steel, structural wall panels, metal decking, reinforcing steel, and wood to shore up each floor of the building.
***Note:** Smoot, the general contractor is on site and will provide flaggers who will control traffic and ensure safety during all deliveries.*
- Concrete pours for the elevated decks will be on a two week per floor pouring cycle.

Questions? Please direct all inquiries to STFHprojects.dgs@dc.gov

2nd Flr. MEP infrastructure



Metal Pan Stair installation



Roof



For your safety, only authorized personnel are allowed to access the construction sites