

**WARD 3 SHORT TERM FAMILY HOUSING (STFH)
PHASE II STFH FACILITY CONSTRUCTION LOOK AHEAD
November 2, 2018**

50 Short-Term Family Housing Units	Dedicated Play & Common Areas	Supportive Programs	Community-Integrated Architectural Design
---	--	----------------------------	--

Project Status:

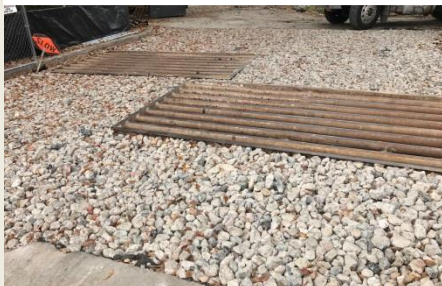
- Relocation of the project trailers and the site fencing has been completed
- Installation of DOEE Sediment and Erosion Control (SEC) measures is completed.
- Removal of brick site walls has been completed.
- Removal of the brick site wall foundation will commence the week of 11/05
- Removal of asphalt and concrete debris is on going

Community Advisory:

- 3 dump trucks will be entering and existing the site daily for the removal of asphalt and concrete debris in preparation for the mobilization of the crane an infrastructure installation.
- 3D monitoring will commence prior to any drilling activities.
- Mobilization of the Crane for the cast auger pile foundation system is projected to be the end of November.
 - The Foundation installation will be drilled, there will be no pile driving activities. This system was chosen to minimize sound and vibration transmission.

Questions? Please direct all inquiries to STFHprojects.dgs@dc.gov

DOEE SEC measures



Asphalt removal



Asphalt removal - continued



For your safety, only authorized personnel are allowed to access the construction sites