



WARD 1 SHORT TERM FAMILY HOUSING (STFH)
PHASE 1 STFH FACILITY CONSTRUCTION UPDATE
AUGUST 2019

35 Short-Term Family Housing Units; 15 PSH Units for Seniors	Dedicated Play & Common Areas	Supportive Programs	Community-Integrated Architectural Design
Substantial Completion August 2020		New families are projected to move in starting October 2020	

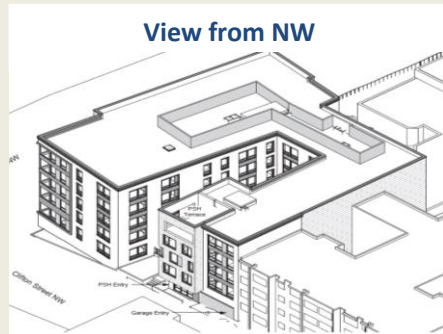
July Milestones:

- Held a groundbreaking event (July 2).
- Protective site and silt fencing installed.
- Protective overhead pedestrian walkway installed on sidewalk in front of site.
- Light pole in front of site was removed. This will be replaced with temporary construction site lighting.
- Excavation of the parking lot area started.

August Projections:

- New entry will be constructed for Rita Bright.
- Excavation of the parking lot will continue.
- Excavation support system will be installed (steel piles and wooden lagging along perimeter of site with concrete pours). This requires the use of a heavy equipment, which may cause vibration on and around the site. A geotechnical engineer is onsite to monitor this work. This is projected to take several months.
- Foundation work will start towards the end of the month.
- Electrical duct bank (to provide site power) will be installed.
- Building permit expected to be received.

Questions? Please direct all inquiries to STFHprojects.dgs@dc.gov



For your safety, only authorized personnel are allowed to access the construction sites