



WARD 1 SHORT TERM FAMILY HOUSING (STFH)
PHASE 1 STFH FACILITY CONSTRUCTION UPDATE
JULY 2019

35 Short-Term Family Housing Units; 15 PSH Units for Seniors	Dedicated Play & Common Areas	Supportive Programs	Community-Integrated Architectural Design
Substantial Completion August 2020		New families are projected to move in starting October 2020	

June Milestones:

- Construction trailer was placed on site.
- Temporary parking was set up for Rita Bright staff.

July Projections:

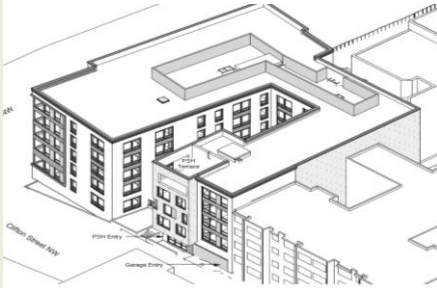
- Held a groundbreaking event (July 2).
- Protective site and silt fencing will be installed.
- Protective overhead pedestrian walkway will be installed on sidewalk in front of site.
- Light pole in front of site will be removed. This will be replaced with temporary construction site lighting.
- Excavation of the parking lot area will begin and continue into the next month.

Questions? Please direct all inquiries to STFHprojects.dgs@dc.gov

View from SE



View from NW



View from North of Site



For your safety, only authorized personnel are allowed to access the construction sites