



WARD 1 SHORT TERM FAMILY HOUSING (STFH)
PHASE 1 STFH FACILITY CONSTRUCTION UPDATE
JUNE 2019

35 Short-Term Family Housing Units; 15 PSH Units for Seniors	Dedicated Play & Common Areas	Supportive Programs	Community-Integrated Architectural Design
Substantial Completion July 2020		New families are projected to move in starting Sept 2020	

May Milestones:

- Construction sitework permits were approved by DCRA

June Projections:

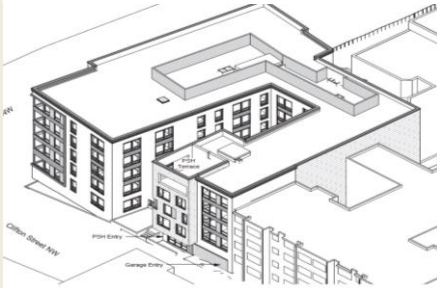
- Construction work will begin in late June.
 - Site fencing will be installed
 - Construction trailer will be placed at the site
 - Excavation of the parking lot area will begin and continue into the next month

Questions? Please direct all inquiries to STFHprojects.dgs@dc.gov

View from SE



View from NW



View from North of Site



For your safety, only authorized personnel are allowed to access the construction sites