



WARD 1 SHORT TERM FAMILY HOUSING (STFH)
PHASE 1 STFH FACILITY CONSTRUCTION UPDATE
SEPTEMBER 2019

35 Short-Term Family Housing Units; 15 PSH Units for Seniors	Dedicated Play & Common Areas	Supportive Programs	Community-Integrated Architectural Design
Substantial Completion August 2020		New families are projected to move in starting October 2020	

August Milestones:

- New entrance into Rita Bright constructed
- Continued excavation of the parking lot
- Excavation support system installation started (steel piles and wooden lagging along perimeter of site with concrete pours)
- Foundation work started

August Projections:

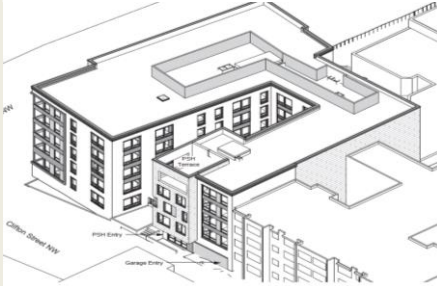
- Excavation of the parking lot will continue
- Excavation support system installation will continue
- Foundation work will continue
- Electrical duct bank (to provide site power) will be installed
- Storm and sanitary water line installation work will begin
- Building permit expected to be received

Questions? Please direct all inquiries to STFHprojects.dgs@dc.gov

View from SE



View from NW



View from North of Site



For your safety, only authorized personnel are allowed to access the construction sites