

WATKINS ELEMENTARY SCHOOL

APRIL 22, 2015

Perkins Eastman DC





SCHEMATIC PLAN

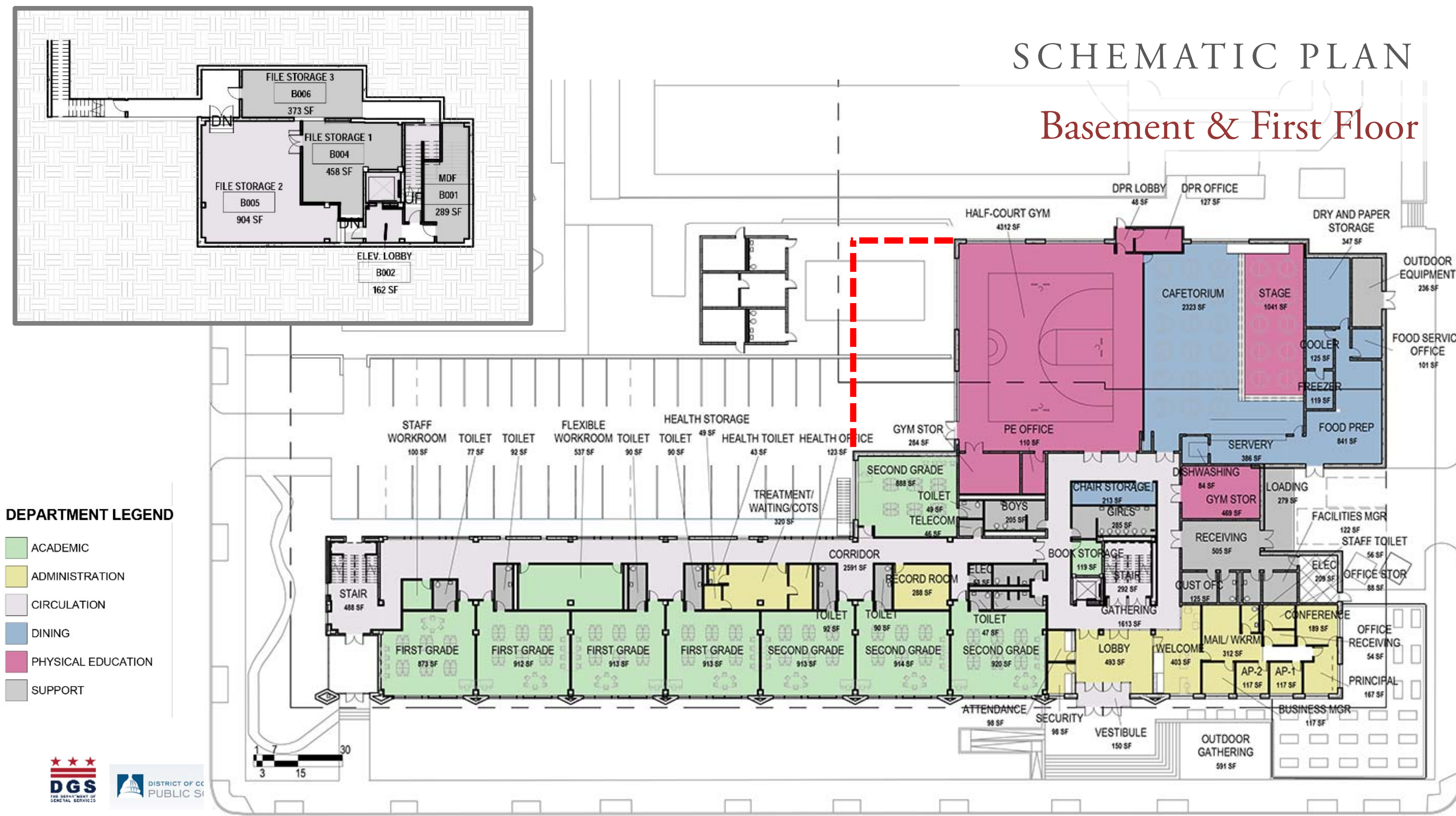


CONCEPT PLAN

Site Plan

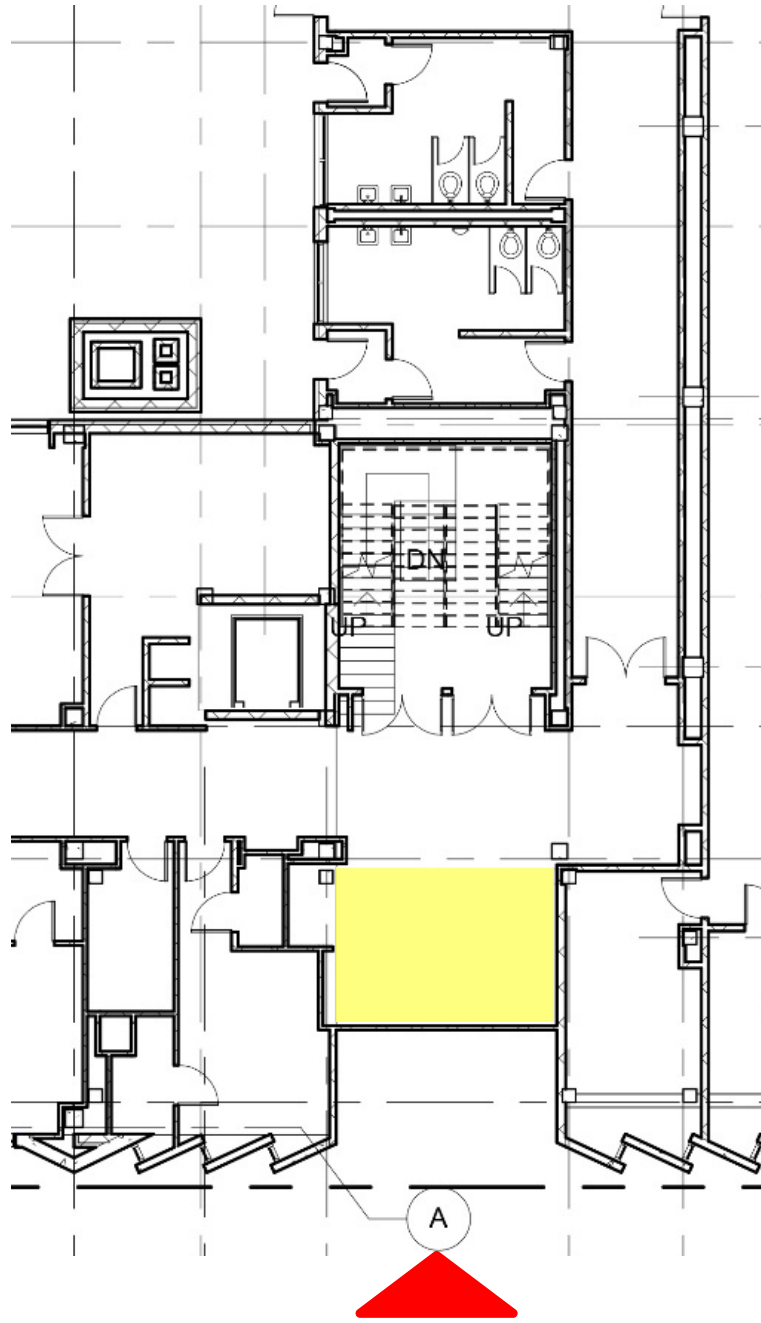
SCHEMATIC PLAN

Basement & First Floor



DEPARTMENT LEGEND

- ACADEMIC
- ADMINISTRATION
- CIRCULATION
- DINING
- PHYSICAL EDUCATION
- SUPPORT



Existing

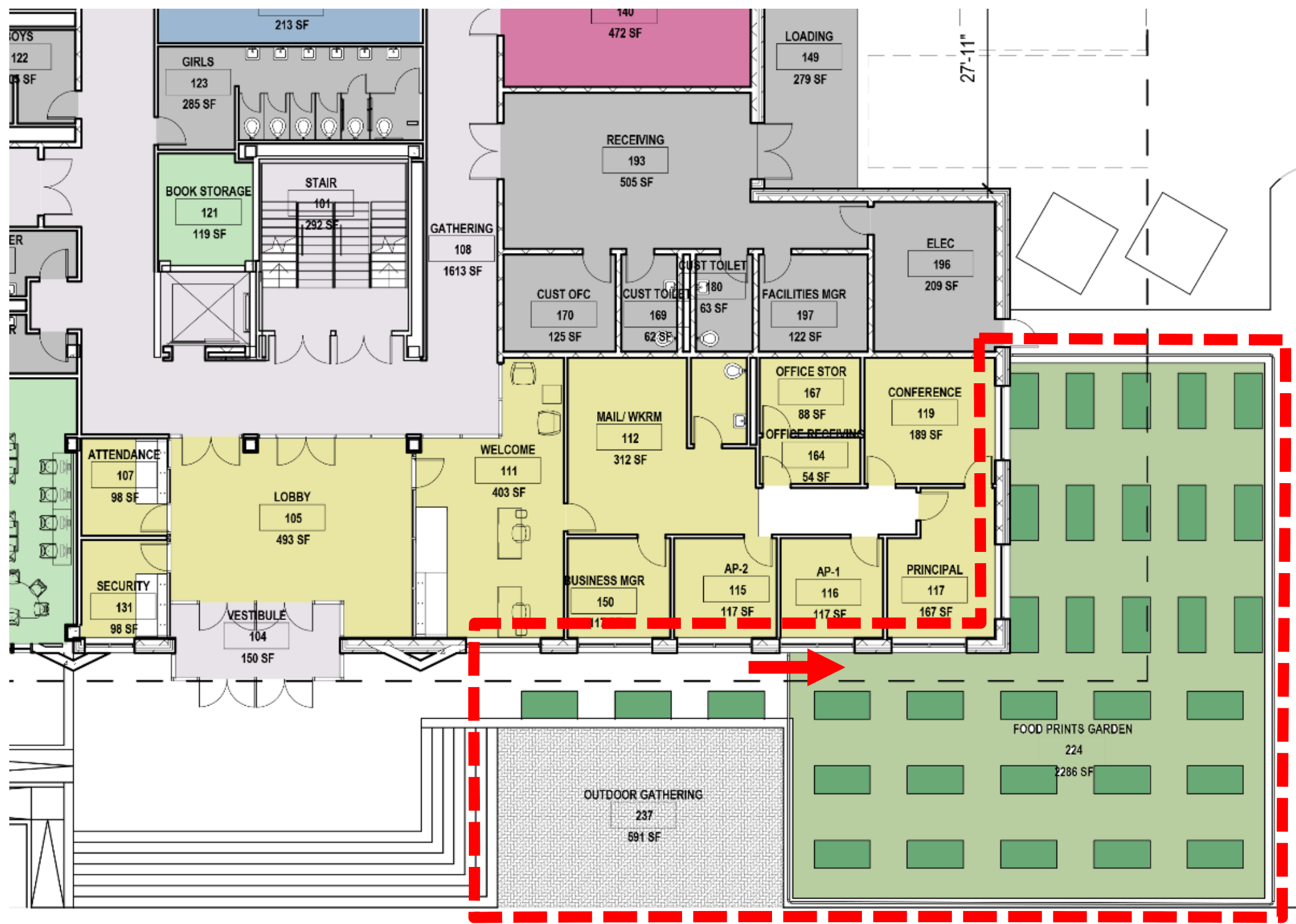


SCHEMATIC PLAN

Entry

Existing
Approx. 200 sf
(includes security desk)

Proposed
493 sf Lobby
150 sf Vestibule
98 sf Attendance
741 sf total



SCHEMATIC PLAN

Food Prints Garden

Existing

2,580 sf (inside fence)

600 sf (outside fence)

3,180 sf total

Proposed

2,200 sf (inside fence)

900 sf (outside fence)

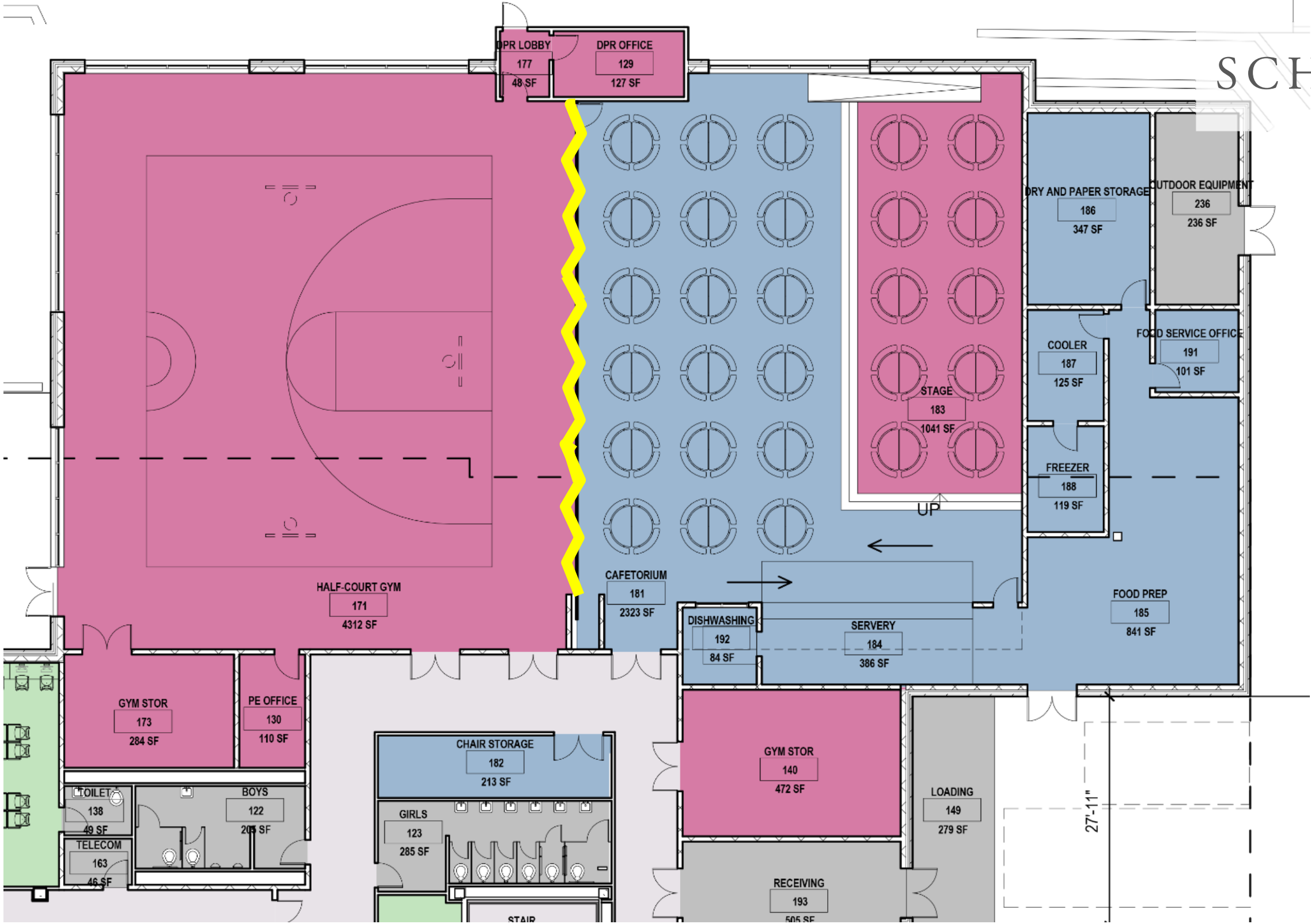
3,100 sf total

Outdoor Gathering @ 600 sf

- Parent Gathering before/after school
- Outdoor classroom for Food Prints

SCHEMATIC PLAN

Gym & Cafetorium

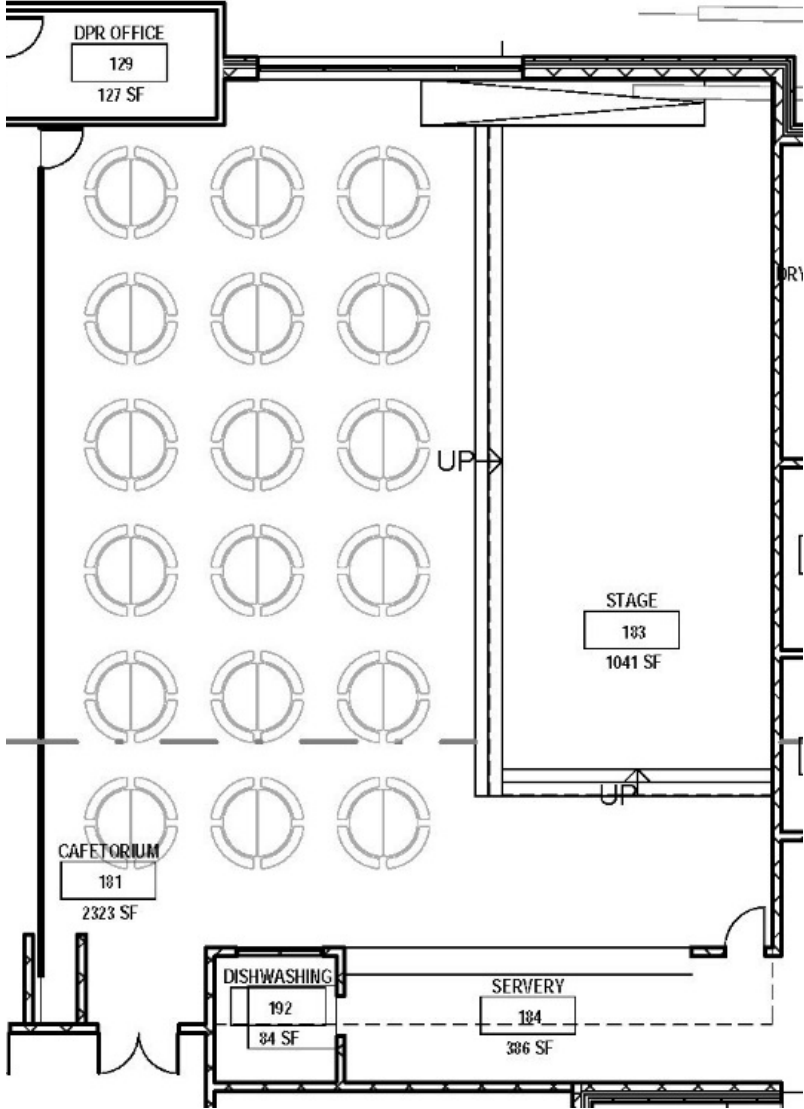


DEPARTMENT LEGEND

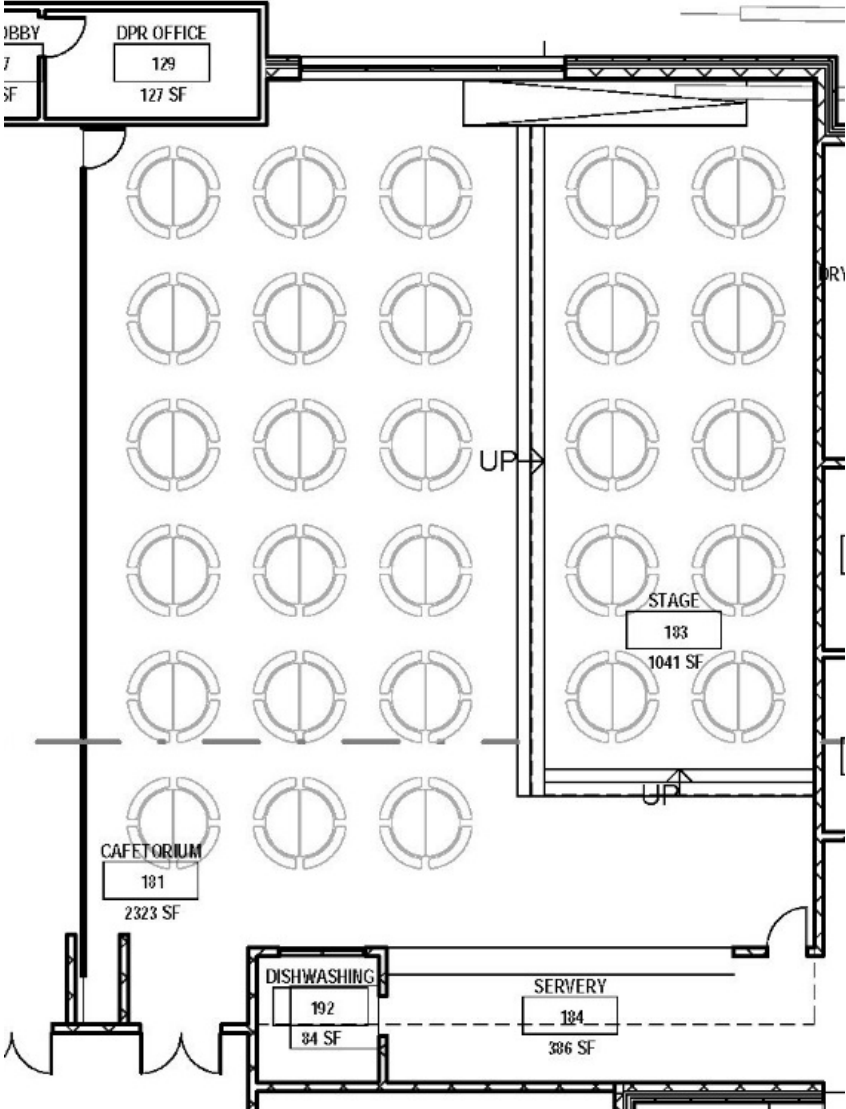
- ACADEMIC
- ADMINISTRATION
- CIRCULATION
- DINING
- PHYSICAL EDUCATION
- SUPPORT

SCHEMATIC PLAN

Dining Options



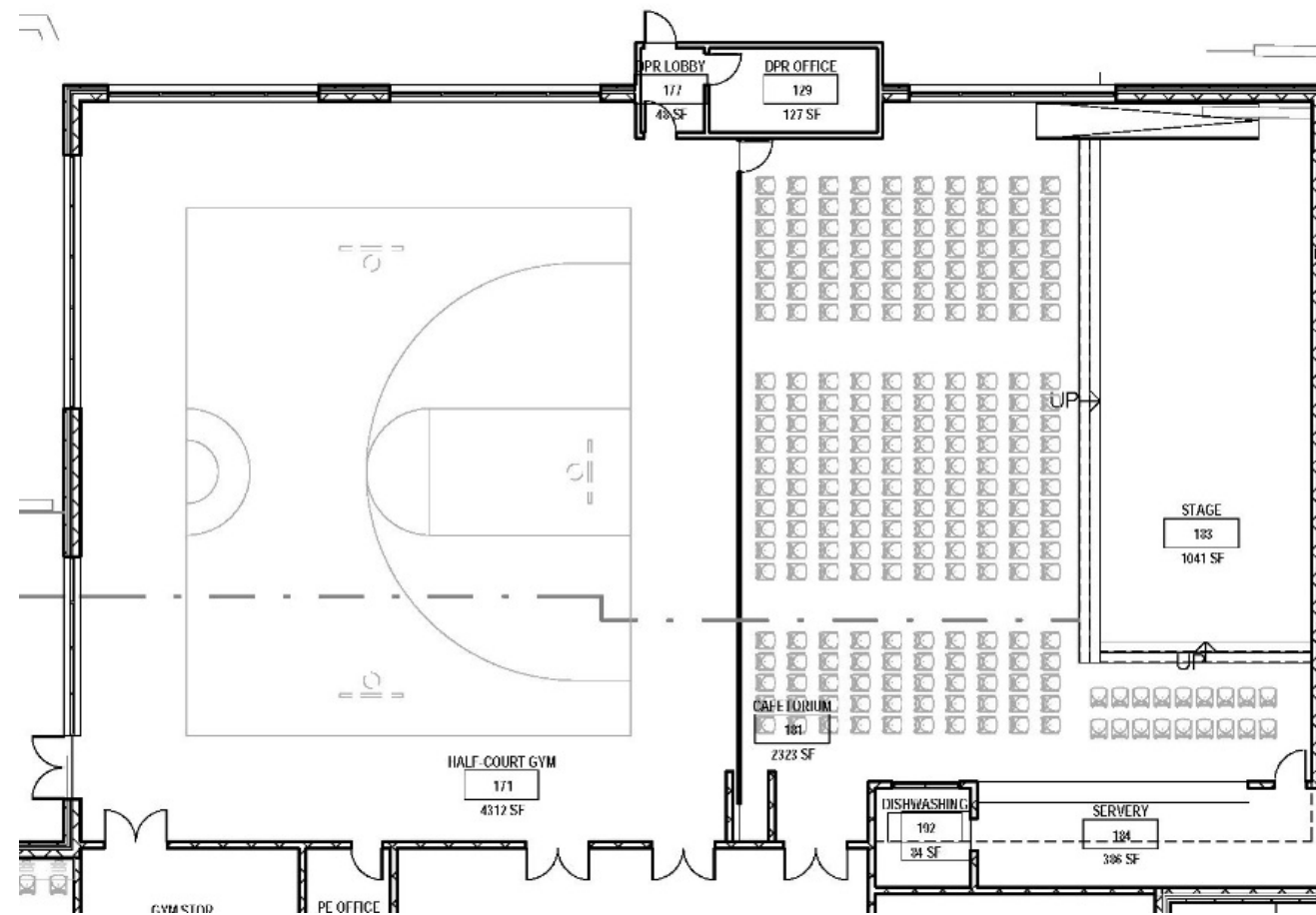
Cafetorium capacity: 144
(approx. 1/3 students)



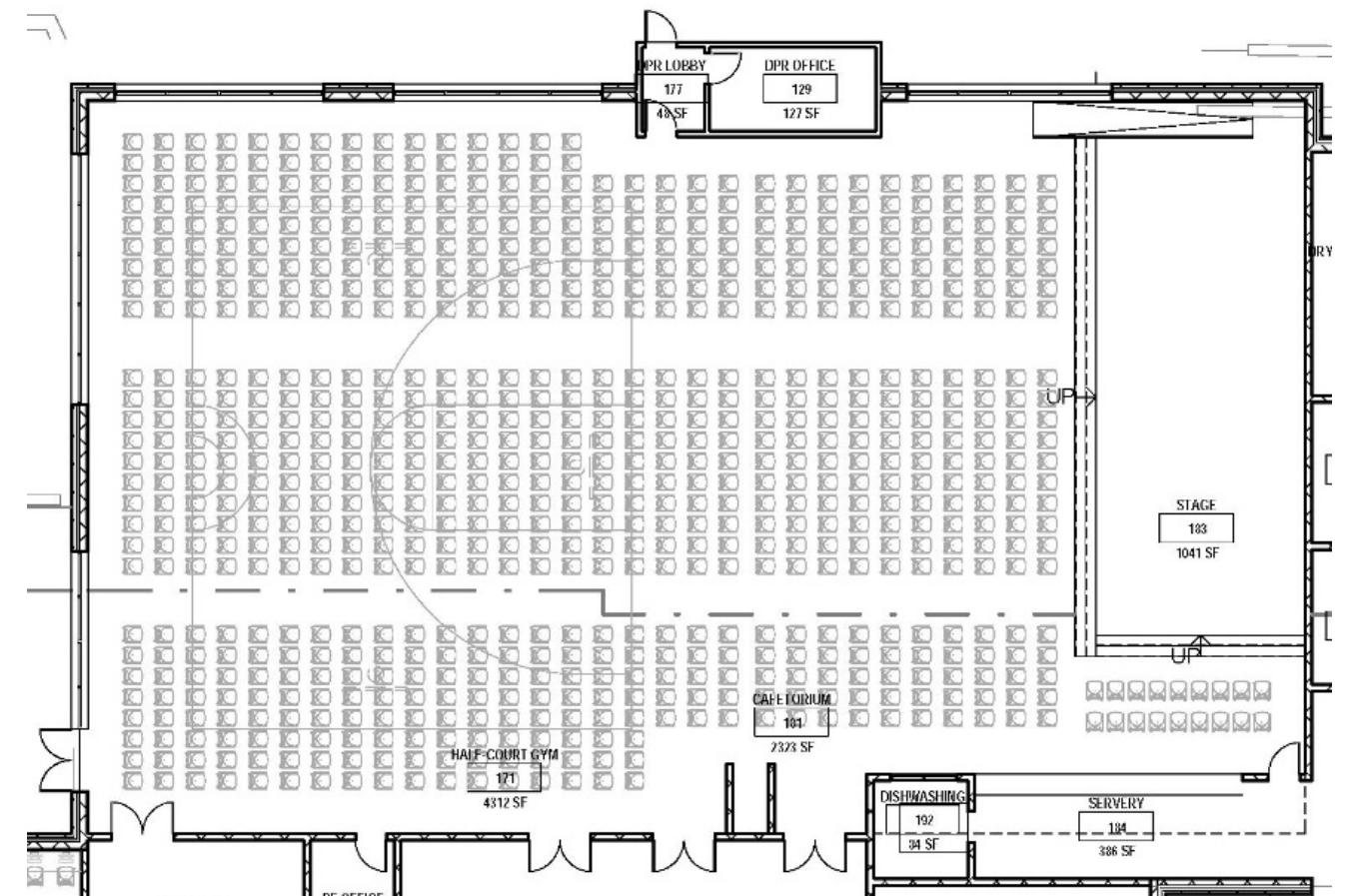
Cafetorium + Stage capacity: 224
(approx. 1/2 students)

SCHEMATIC PLAN

Performance Seating Options



Cafetorium capacity: 238



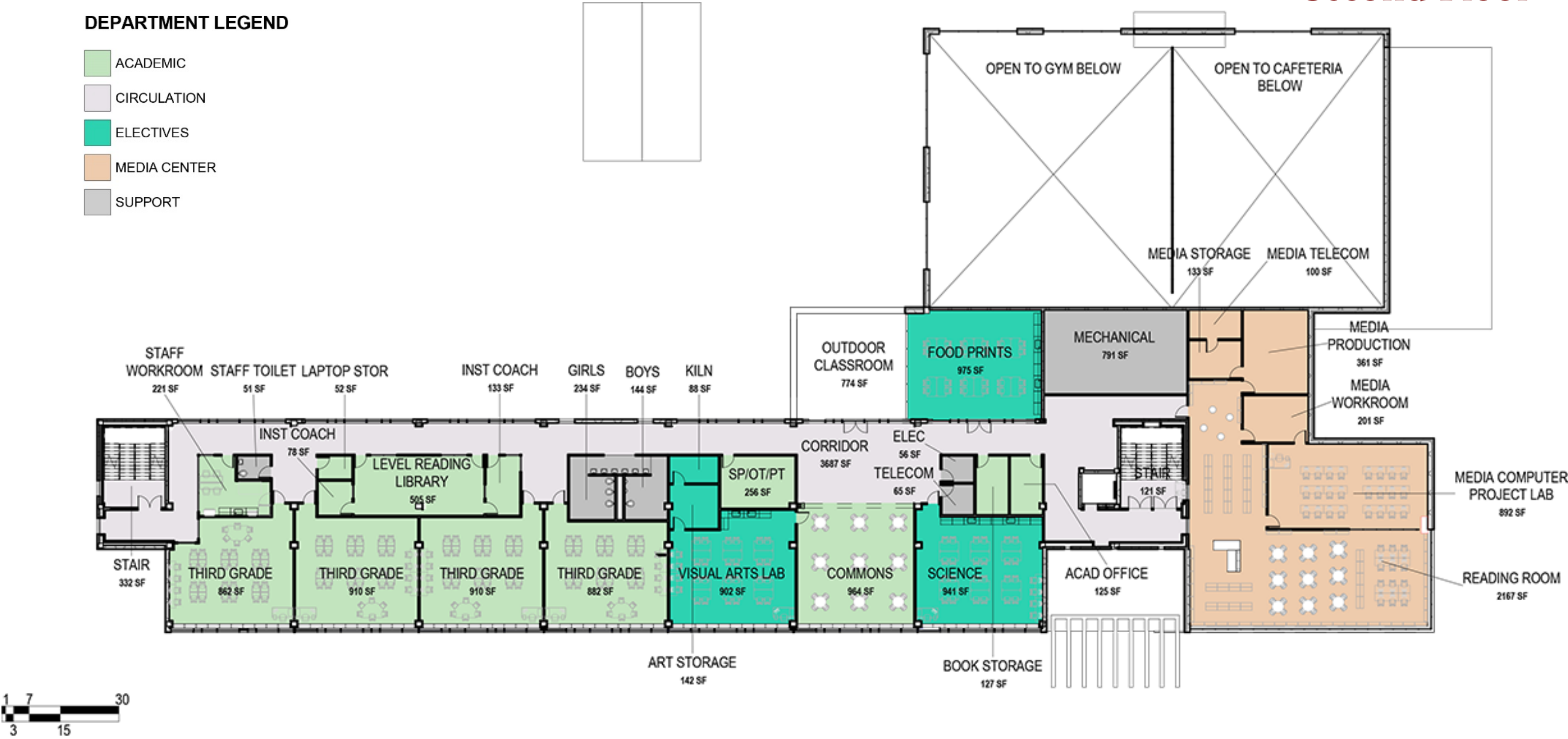
Gym + Cafetorium capacity: 759

SCHEMATIC PLAN

Second Floor

DEPARTMENT LEGEND

- ACADEMIC
- CIRCULATION
- ELECTIVES
- MEDIA CENTER
- SUPPORT



DEPARTMENT LEGEND

■	ACADEMIC
■	CIRCULATION
■	ELECTIVES
■	MEDIA CENTER
■	SUPPORT



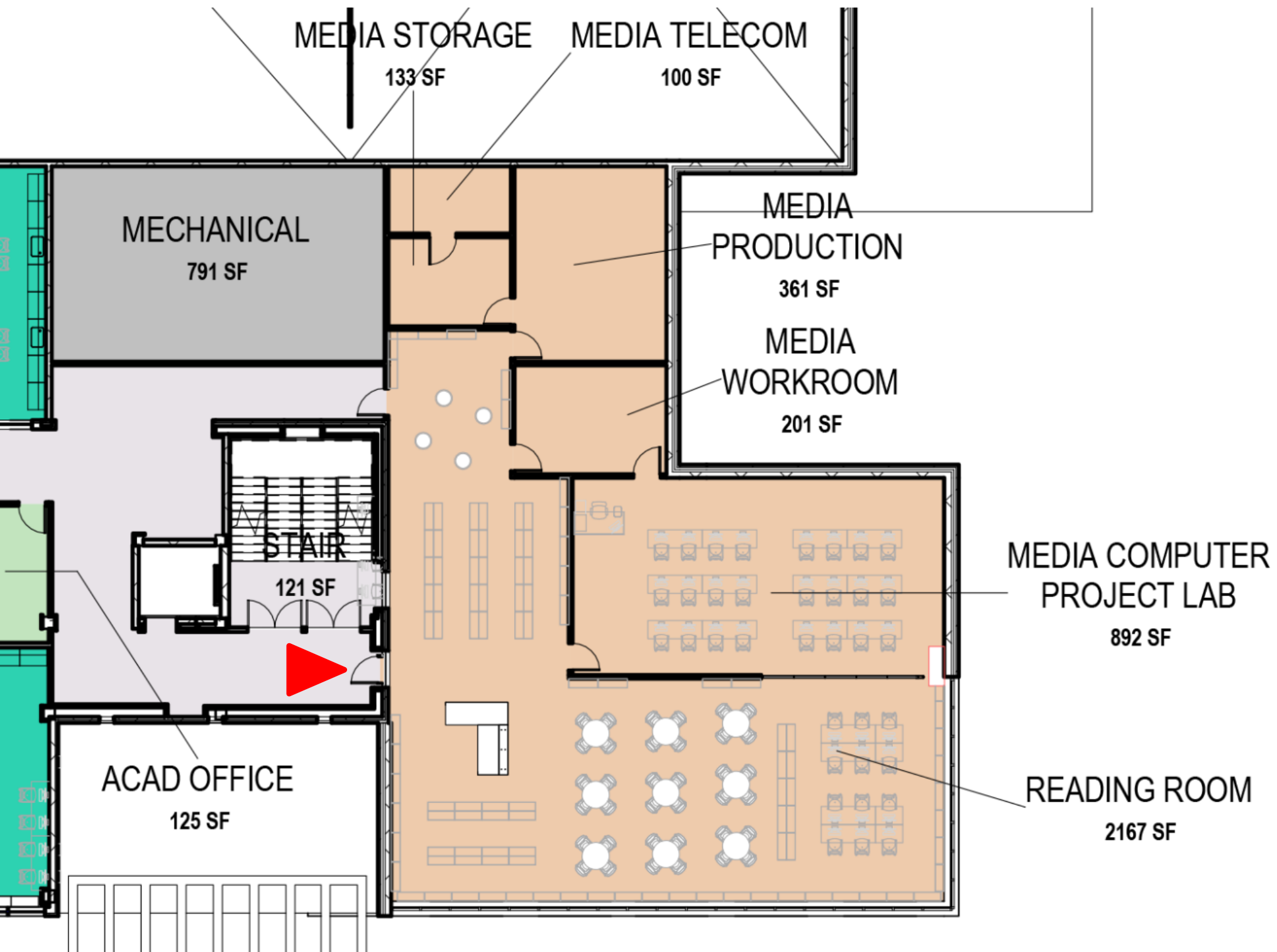
SCHEMATIC PLAN

Second Floor Electives

Outdoor Classroom @ 774 sf

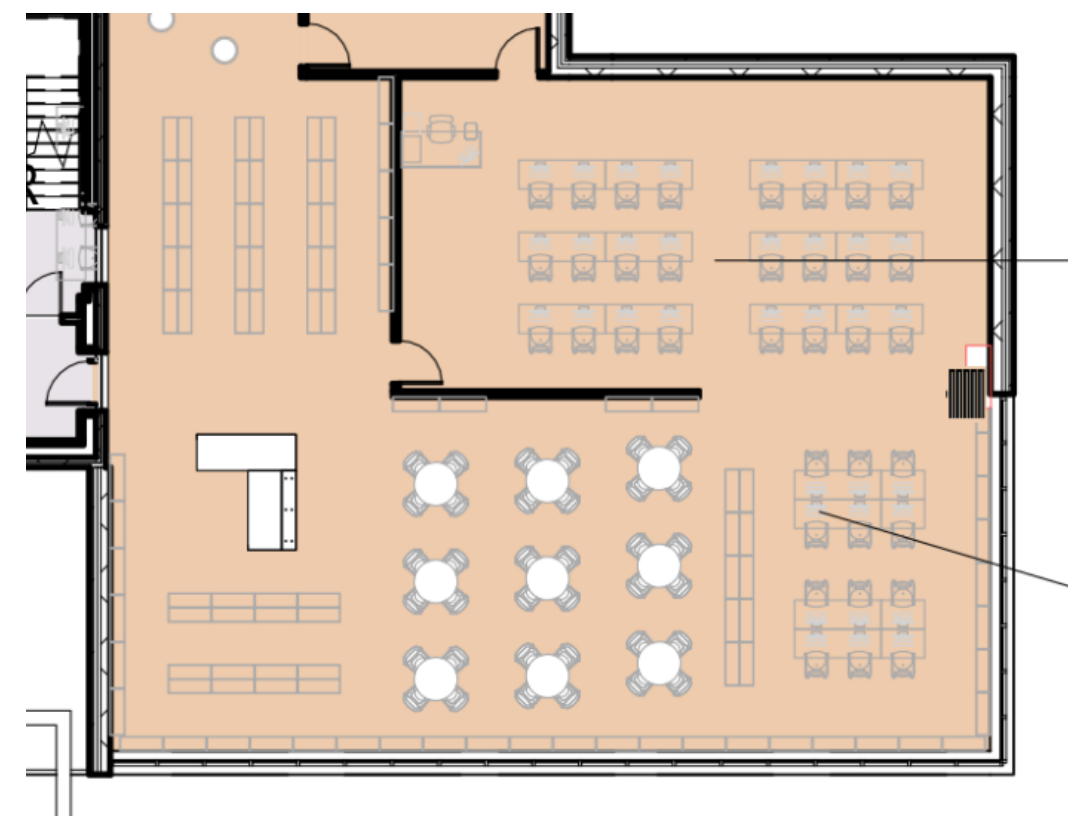
Can be easily accessed from

- Visual Arts
- Science
- Food Prints
- Commons



SCHEMATIC PLAN

Media Center



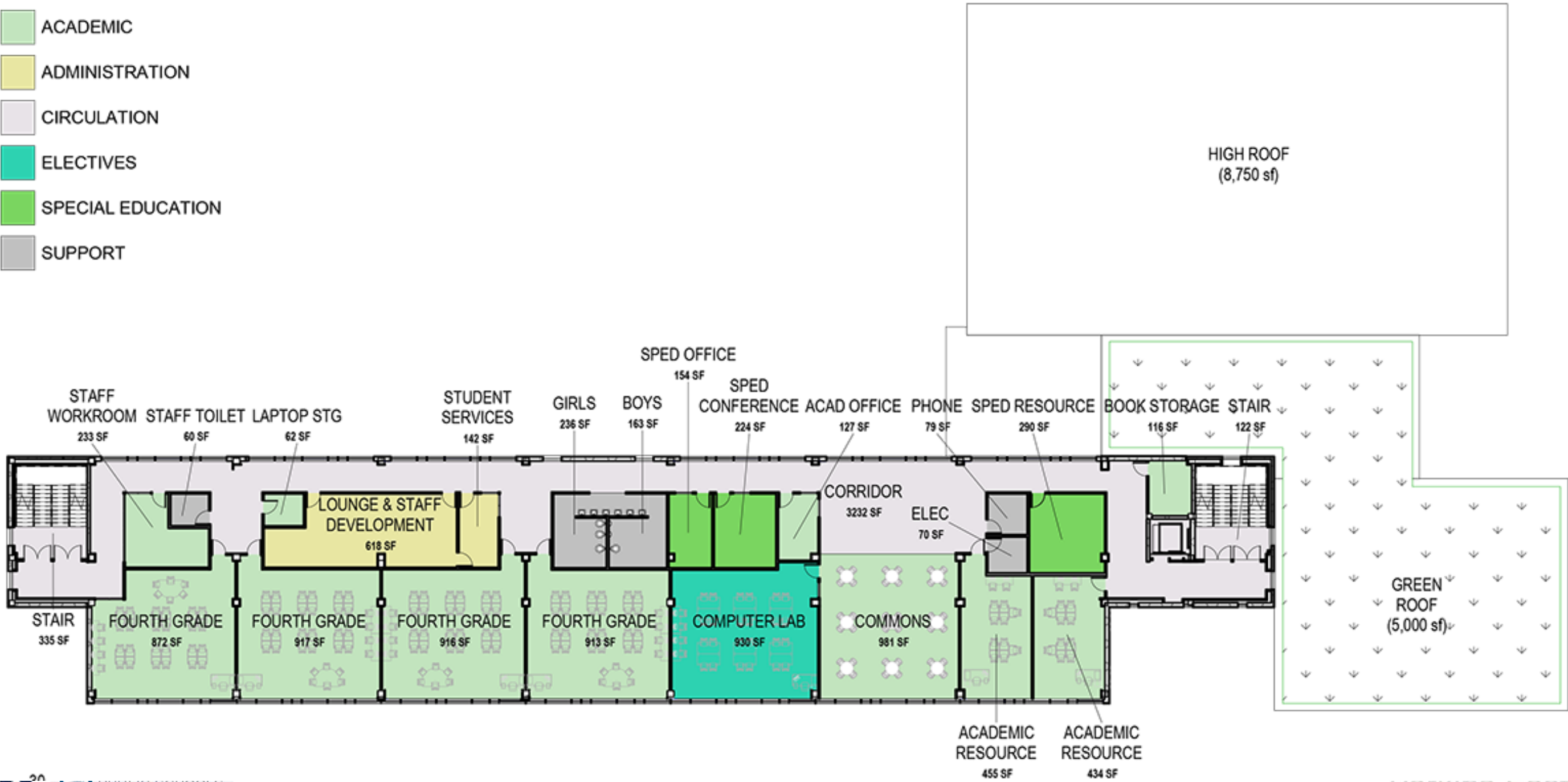
Operable Partition in Open Position

SCHEMATIC PLAN

Third Floor

DEPARTMENT LEGEND

- ACADEMIC
- ADMINISTRATION
- CIRCULATION
- ELECTIVES
- SPECIAL EDUCATION
- SUPPORT



SCHEMATIC PLAN

Fourth Floor

DEPARTMENT LEGEND

- ACADEMIC
- ADMINISTRATION
- CIRCULATION
- ELECTIVES
- SPECIAL EDUCATION
- SUPPORT

