

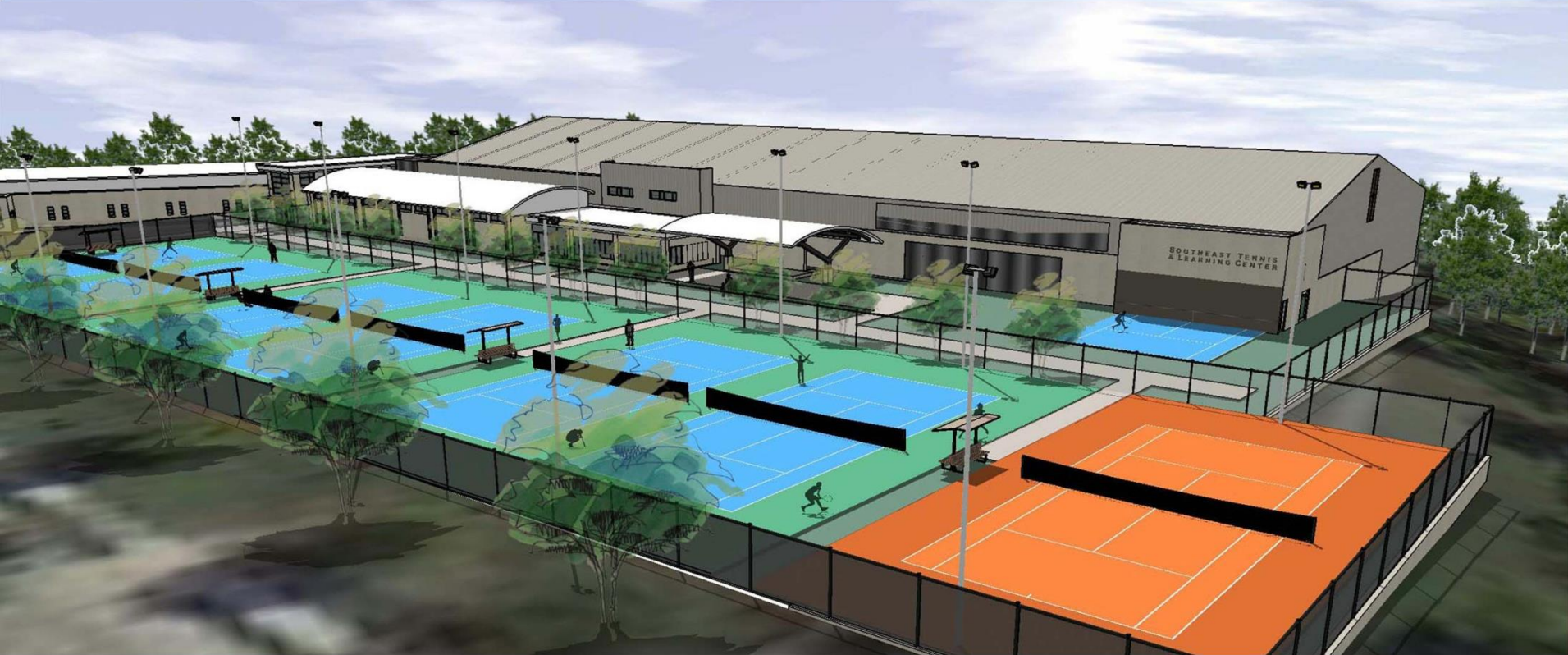


Community Meeting #3

June 30, 2014



SOUTHEAST TENNIS AND LEARNING CENTER



SOUTHEAST TENNIS & LEARNING CENTER

INTRODUCTIONS





SOUTHEAST TENNIS & LEARNING CENTER

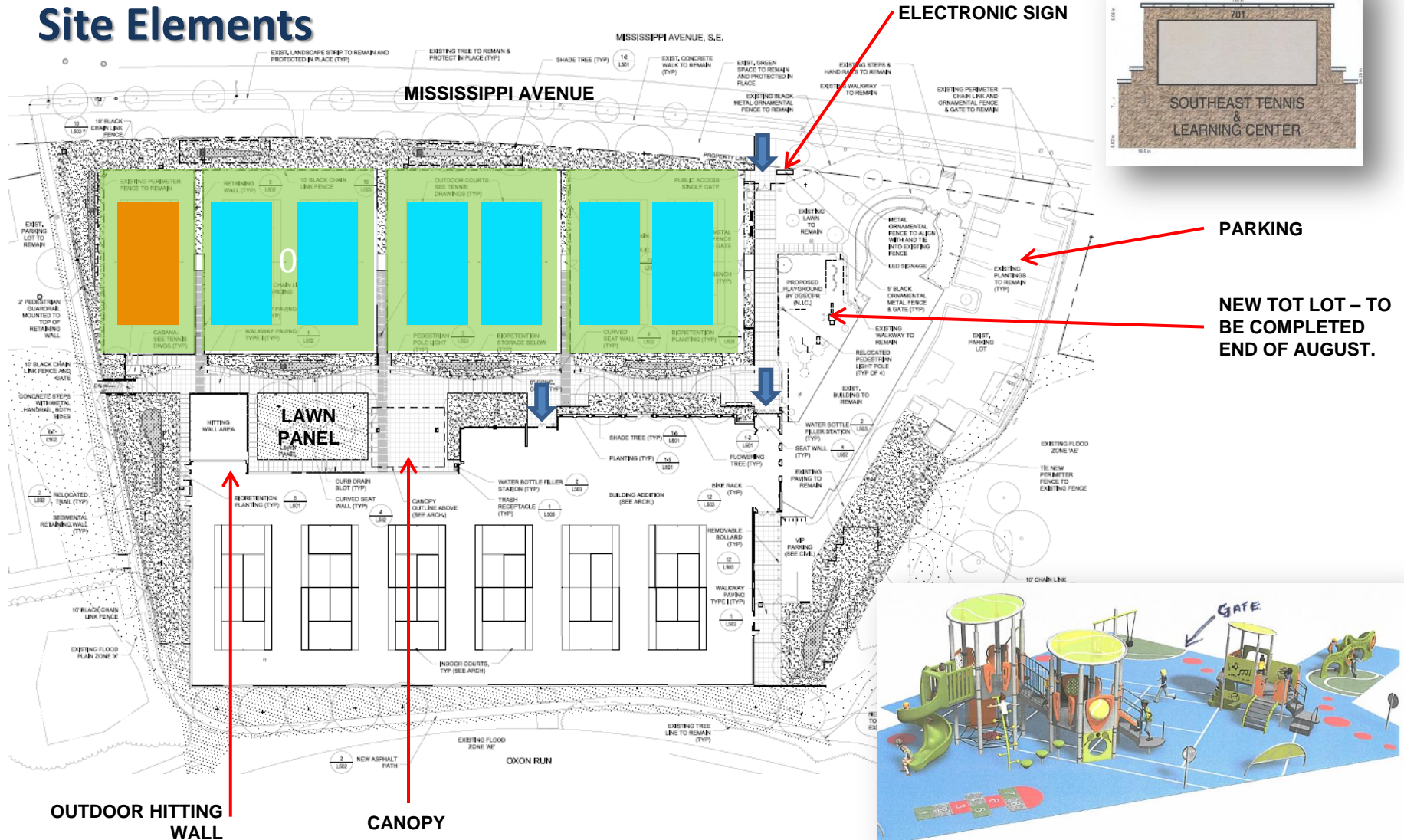


DESIGN UPDATES

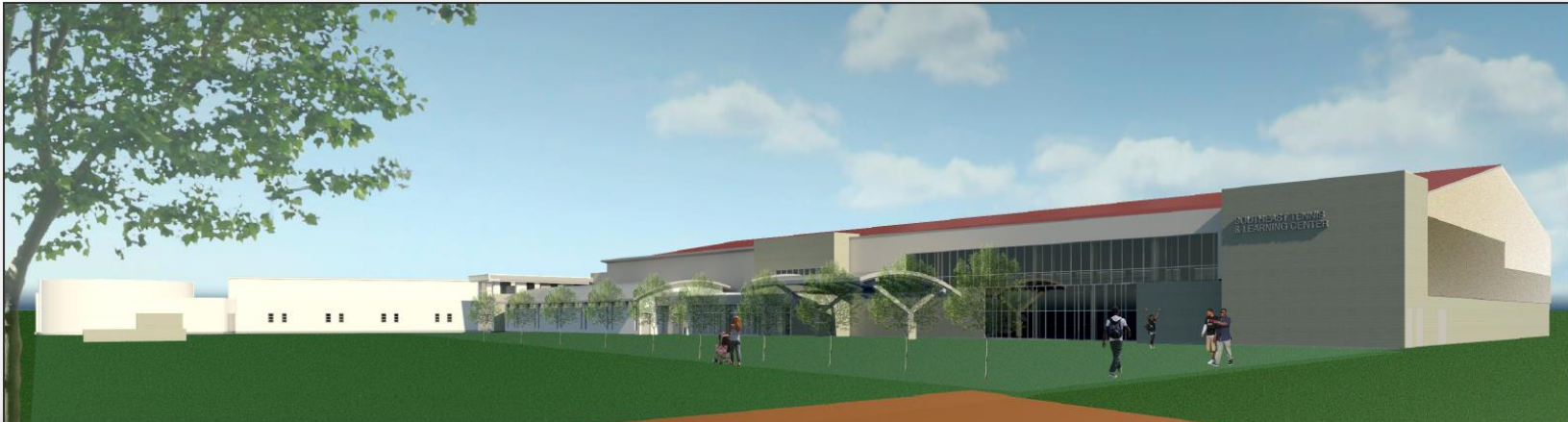
SOUTHEAST TENNIS & LEARNING CENTER



Site Elements



SOUTHEAST TENNIS & LEARNING CENTER



AdobeTexture™ Wall Panels



Sandstone



Surrey Beige



SPLIT AND GROUND FACED CMU

ROOF PANEL

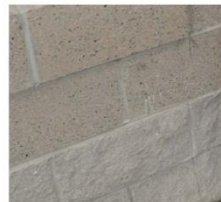


TERRA COTTA (TC)

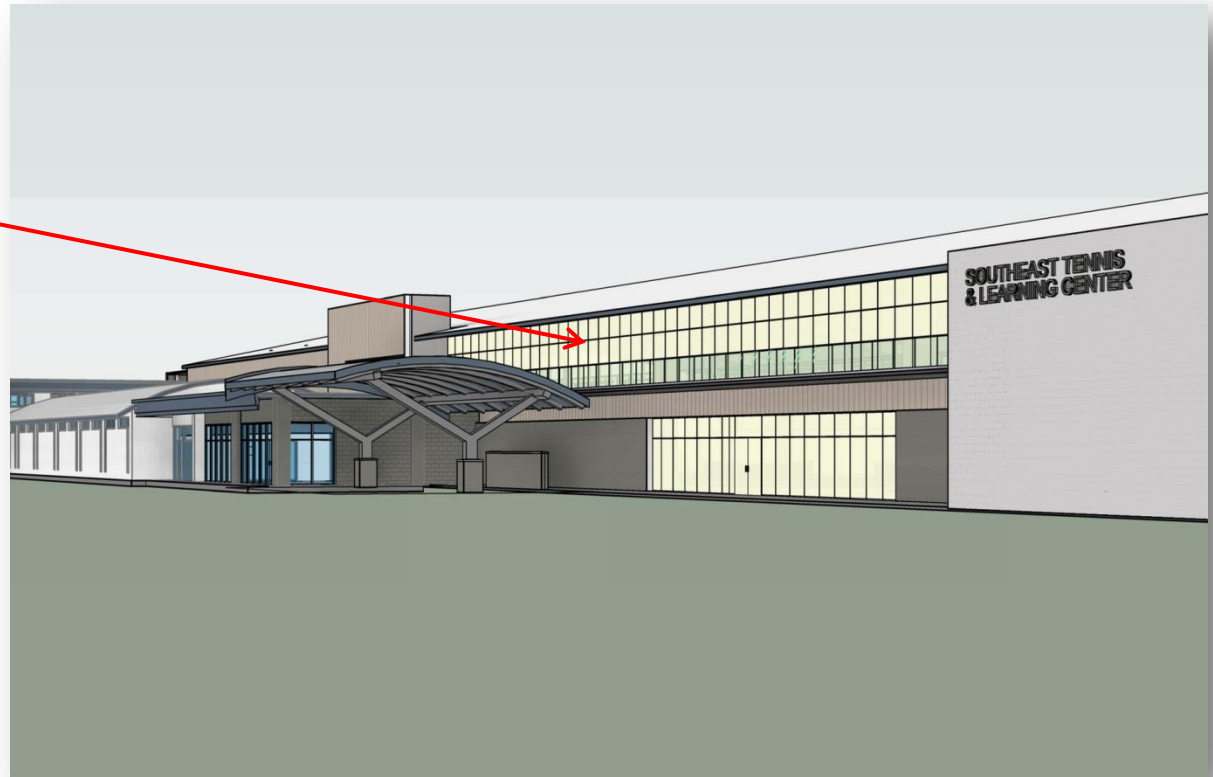
.35 Reflectance (R)

.85 Initial Emittance (IE)

36 Solar Reflectance Index (SRI)



STOREFRONT
WINDOW SYSTEM

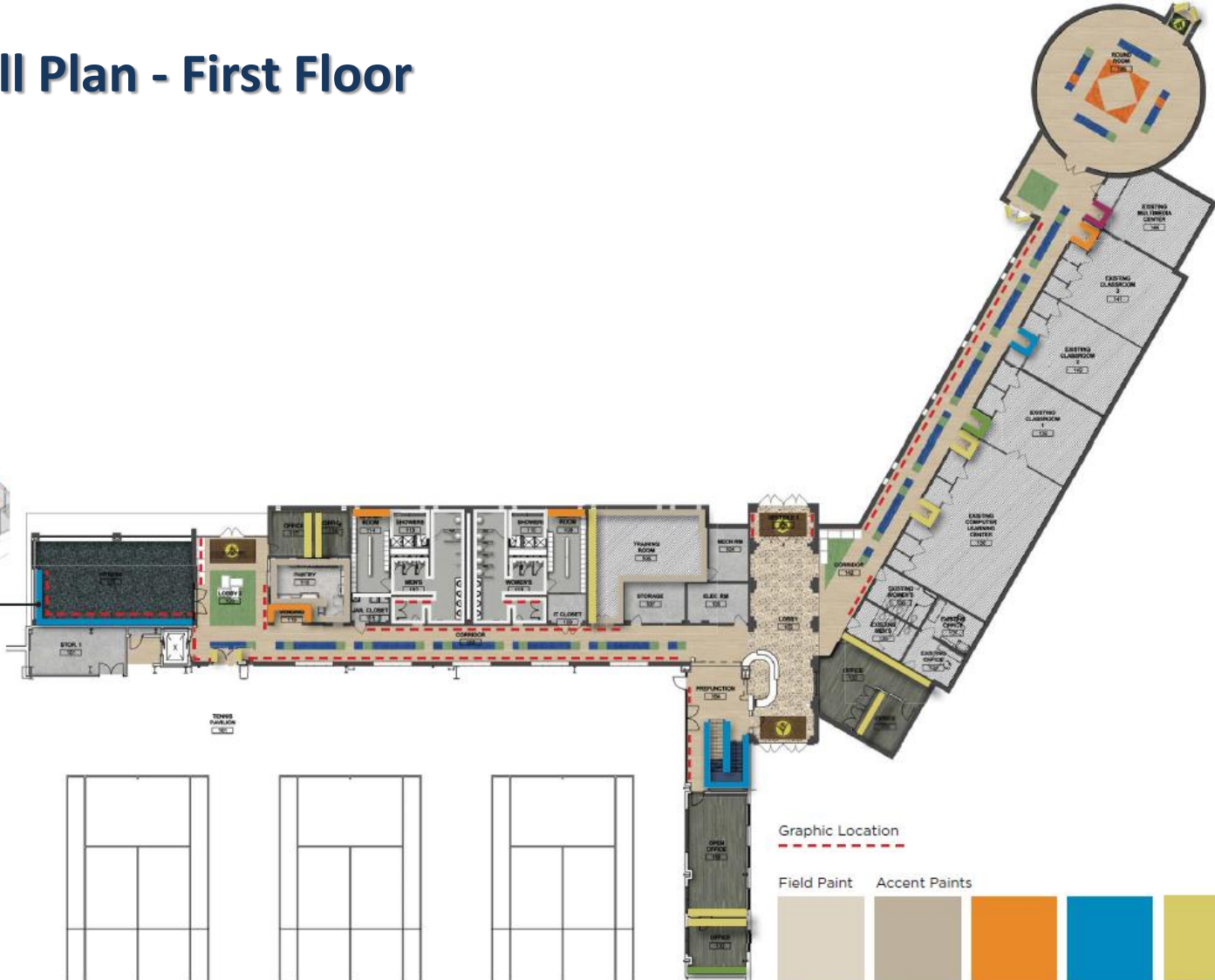


View From Pavilion Side

Overall Plan - First Floor



FITNESS:
Mirrors on these walls up to 6'-6" PT-4 above



Graphic Location

Field Paint Accent Paints



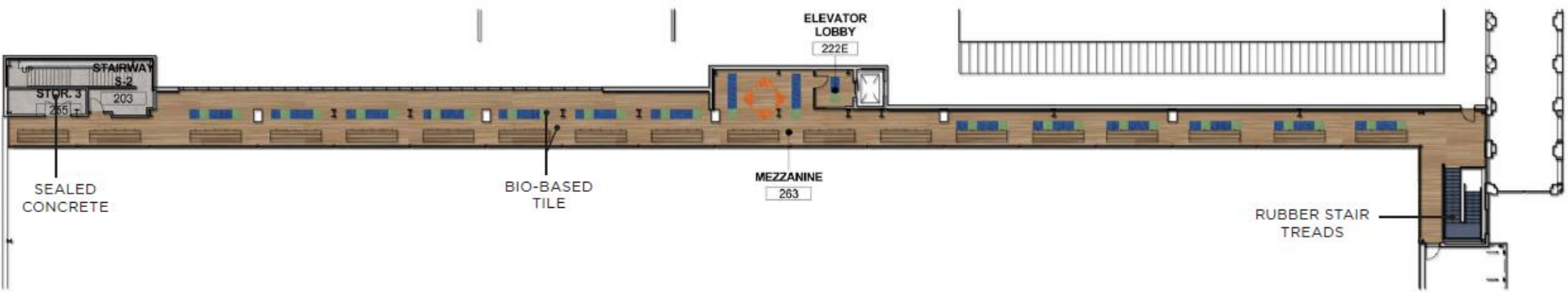
PT-1 PT-2 PT-3 PT-4 PT-5 PT-6 PT-7



Plan – Tennis Wing

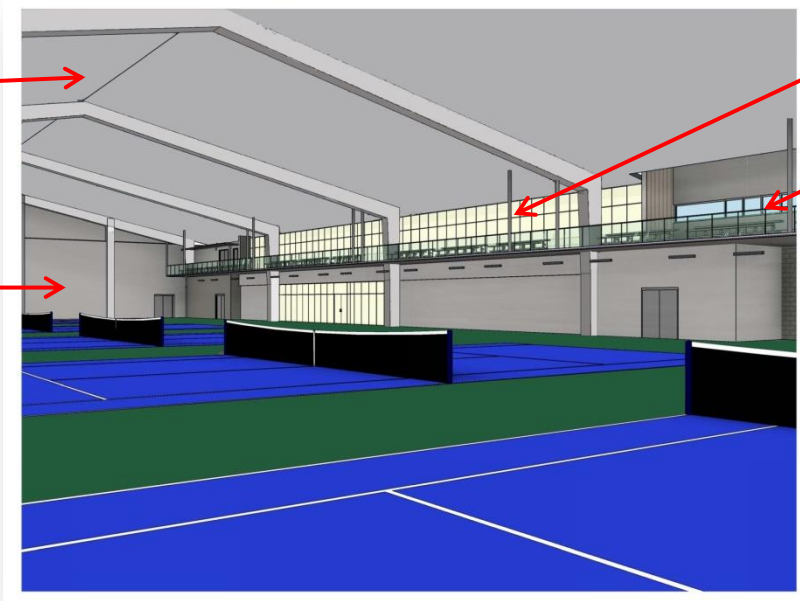


Plan – Mezzanine



METAL PANEL

PAINTED CMU
(+/- 12 FT HIGH)



STOREFRONT
WINDOW SYSTEM

EXTERIOR
WINDOW

TILT AND ROLL ALUMINUM
BLEACHERS



Sustainability



LEED 2009 for New Construction and Major Renovations
Project Checklist

23	2	1	Sustainable Sites	26 Points
Y			Prereq 1 Construction Activity Pollution Prevention	Required
1			Credit 1 Site Selection	1
5			Credit 2 Development Density & Community Connectivity	5
	1		Credit 3 Brownfield Redevelopment	1
6			Credit 4.1 Alternative Transportation, Public Trans	6
	1		Credit 4.2 Alternative Transportation, Bike/Shower	1
3			Credit 4.3 Alternative Transportation, Low-Emitting and Fuel-Efficient	3
2			Credit 4.4 Alternative Transportation, Parking Cap	2
1			Credit 5.1 Site Development, Protect or Restore Habitat	1
1			Credit 5.2 Site Development, Maximize Open Space	1
1			Credit 6.1 Stormwater Design, Quantity Control	1
1			Credit 6.2 Stormwater Design, Quality Control	1
	1		Credit 7.1 Heat Island Effect, Non-Roof	1
1			Credit 7.2 Heat Island Effect, Roof	1
1			Credit 8 Light Pollution Reduction	1
6	4		Water Efficiency	10 Points
Y			Prereq 1 Water Use Reduction, 20% Reduction	Required
4			Credit 1 Water Efficient Landscaping	2 to 4
	2		Credit 2 Innovative Wastewater Technologies	2
2			Credit 3 Water Use Reduction	2 to 4
9	3	23	Energy & Atmosphere	35 Points
Y			Prereq 1 Fundamental Commissioning	Required
Y			Prereq 2 Minimum Energy Performance	Required
Y			Prereq 3 Fundamental Refrigerant Management	Required
4		15	Credit 1 Optimize Energy Performance	1 to 19
	3	4	Credit 2 On-Site Renewable Energy	1 to 7
2			Credit 3 Enhanced Commissioning	2
		2	Credit 4 Enhanced Refrigerant Management	2
1		2	Credit 5 Measurement & Verification	3
2			Credit 6 Green Power	2
6	1	7	Materials & Resources	14 Points
Y			Prereq 1 Storage & Collection of Recyclables	Required
	3		Credit 1.1 Building Reuse, Maintain Existing Walls RPC	1 to 3
		1	Credit 1.2 Building Reuse, Maintain 50% of Interior Non-Structural El	1
2			Credit 2 Construction Waste Management	1 to 2
	2		Credit 3 Materials Reuse	1 to 2
1			Credit 4 Recycled Content	1 to 2
	1		Credit 5 Regional Materials	1 to 2
		1	Credit 6 Rapidly Renewable Materials	1
1			Credit 7 Certified Wood	1
9	1	5	Indoor Environmental Quality	15 Points
Y			Prereq 1 Minimum IAQ Performance	Required
Y			Prereq 2 Tobacco Smoke (ETS) Control	Required
		1	Credit 1 Outdoor Air Delivery Monitoring	1
		1	Credit 2 Increased Ventilation	1
	1		Credit 3.1 Construction IAQ Mgt Plan, Const	1
	1		Credit 3.2 Construction IAQ Mgt Plan, Occupancy	1
	1		Credit 4.1 Low-Emitting Materials, Adhesives	1
	1		Credit 4.2 Low-Emitting Materials, Paints	1
1			Credit 4.3 Low-Emitting Materials, Flooring	1
	1		Credit 4.4 Low-Emitting Materials, Composite	1
		1	Credit 5 Indoor Chemical & Pollutant Control	1
		1	Credit 6.1 Controllability of Systems, Lighting	1
		1	Credit 6.2 Controllability of Systems, Thermal Comfort	1
	1		Credit 7.1 Thermal Comfort, Design	1
	1		Credit 7.2 Thermal Comfort, Verification	1
		1	Credit 8.1 Daylight & Views, Daylight 75% of Spaces	1
		1	Credit 8.2 Daylight & Views, Views for 90% of Spaces	1
6	1		Innovation & Design Process	6 Points
1			Credit 1.1 Innovation in Design: Education	1
			Credit 1.2 Innovation in Design: Exceed Open Space Requirement	
	1		Credit 1.2 Innovation in Design: Exceed Recycled Content	1
	1		Credit 1.3 Innovation in Design: Green Cleaning	1
	1		Credit 1.4 Innovation in Design: Exceed Stormwater Quantity	1
	1		Credit 1.5 Innovation in Design: Exceed Green Power	1
	1		Credit 2 LEED® Accredited Professional	1
2	1	3	Regional Priority	4 Points
	1		Credit 1.1 Regional Priority: On Site Renewable Energy	1
		1	Credit 1.2 Regional Priority: Stormwater Design Quantity	1
		1	Credit 1.3 Regional Priority: Building Reuse- maintain exist walls 75%	1
		1	Credit 1.4 Regional Priority: Protect or restore Habitat	1
		1	Credit 1.4 Regional Priority: Optimize Energy Performance	1
		1	Credit 1.4 Regional Priority: Innovative Waste Water	1
61	9	43	Project Totals (pre-certification estimates)	110 Points
Y	S	No	Certified 40-49 points Silver 50-59 points Gold 60-79 points Platinum 80-110 point	

LEED Silver Target

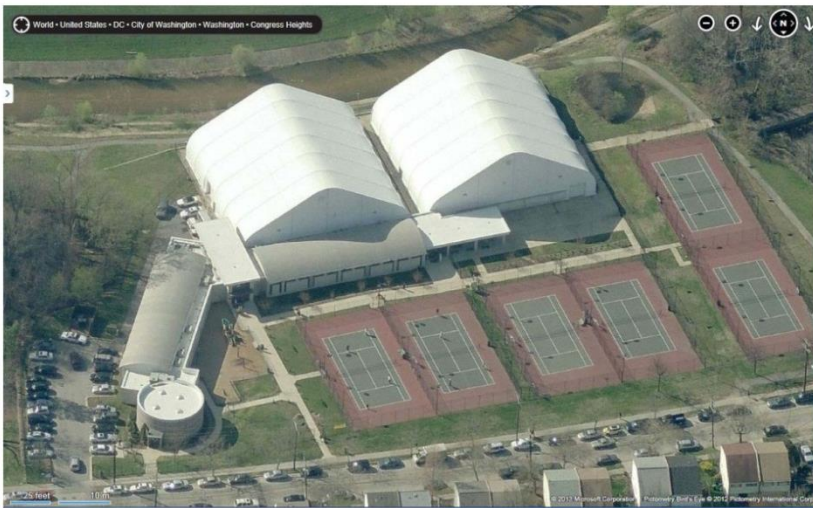


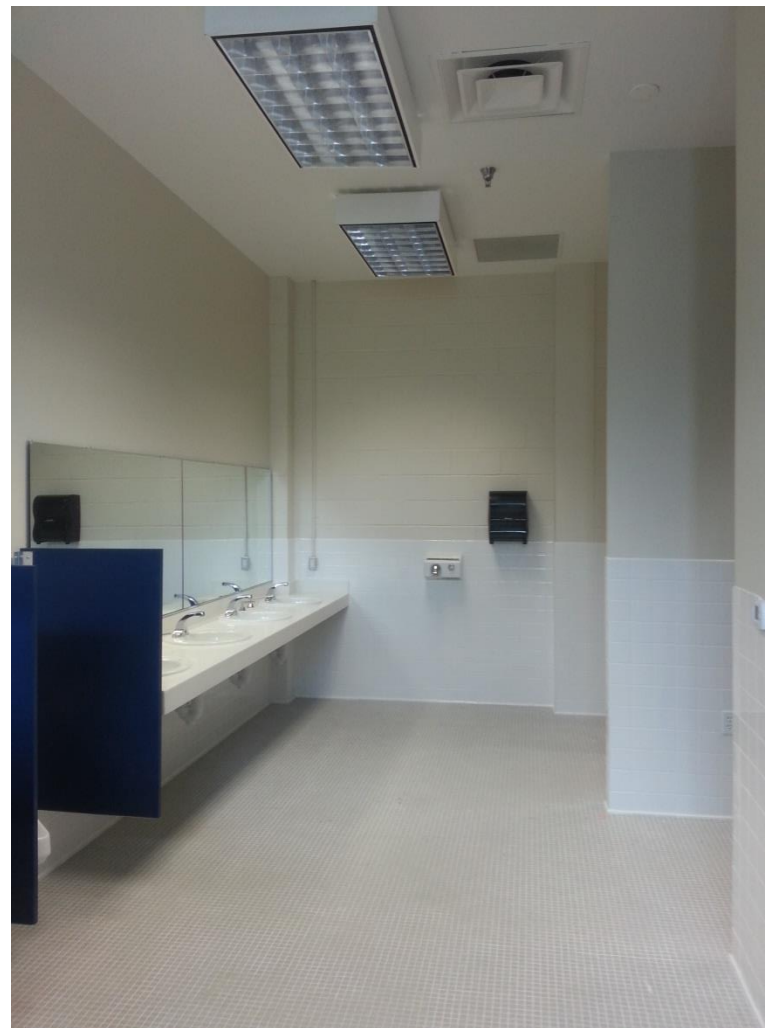
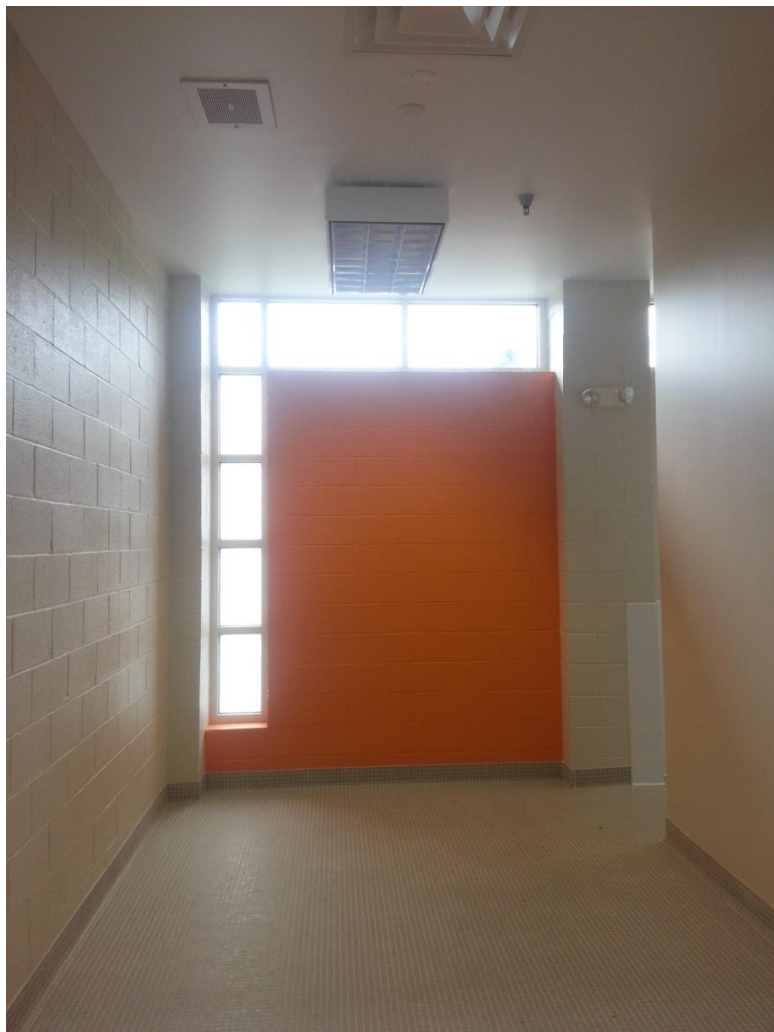
SOUTHEAST TENNIS & LEARNING CENTER



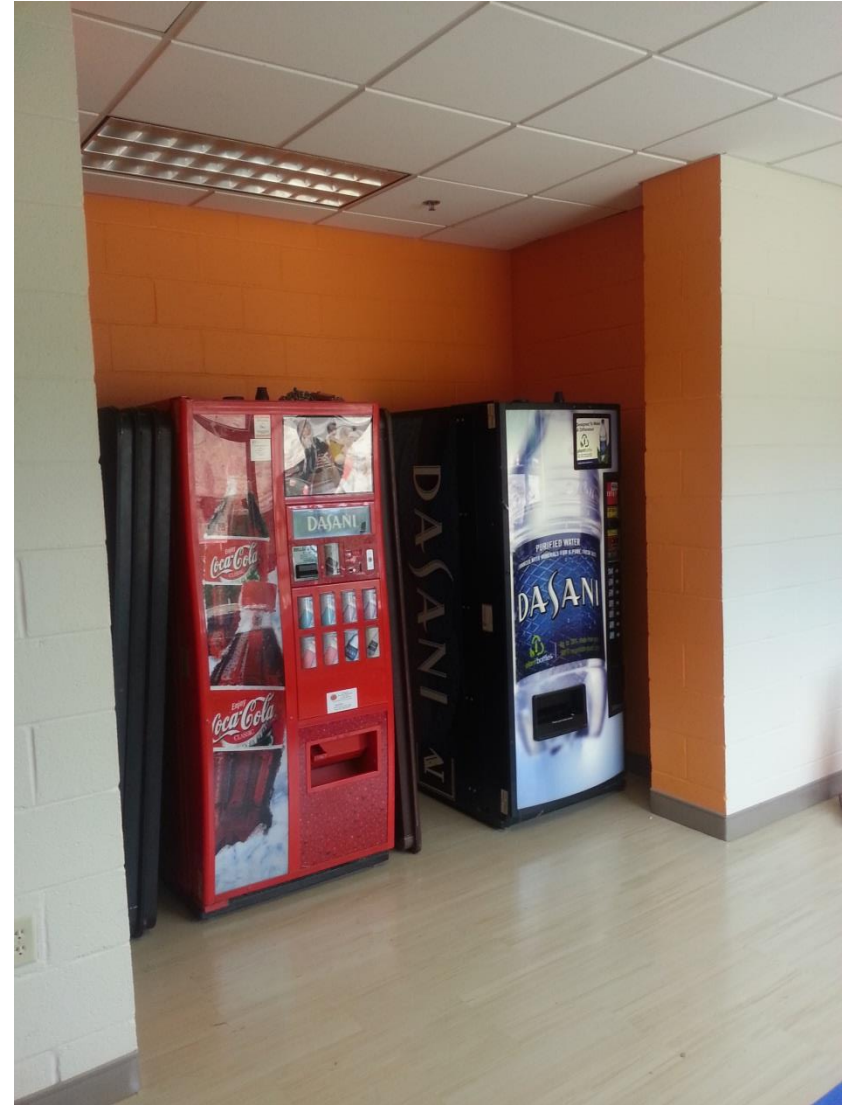
CONSTRUCTION UPDATES

SOUTHEAST TENNIS & LEARNING CENTER





SOUTHEAST TENNIS & LEARNING CENTER





SOUTHEAST TENNIS & LEARNING CENTER



PROJECT TIMELINE

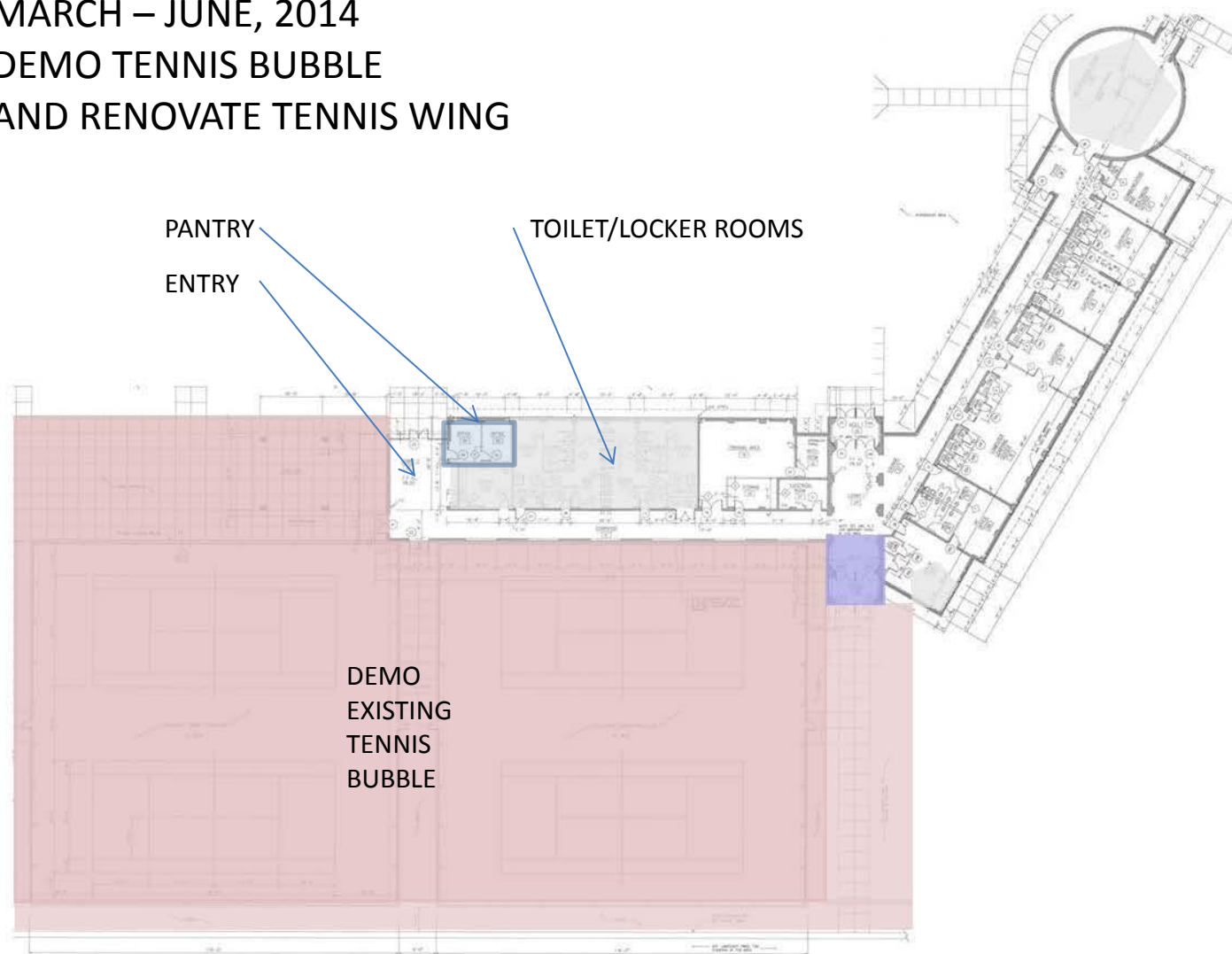
SOUTHEAST TENNIS AND LEARNING CENTER

Project Timelines

Activity	Timeline
Design Coordination	January 2014 - March 2014
Construction of New Indoor Tennis Building	March 2014 - November 2014
Renovation of Existing Facility	March 2014 - September 2014
Refurbished Outdoor Courts & Grounds	December 2014 - July 2015



MARCH – JUNE, 2014
DEMO TENNIS BUBBLE
AND RENOVATE TENNIS WING

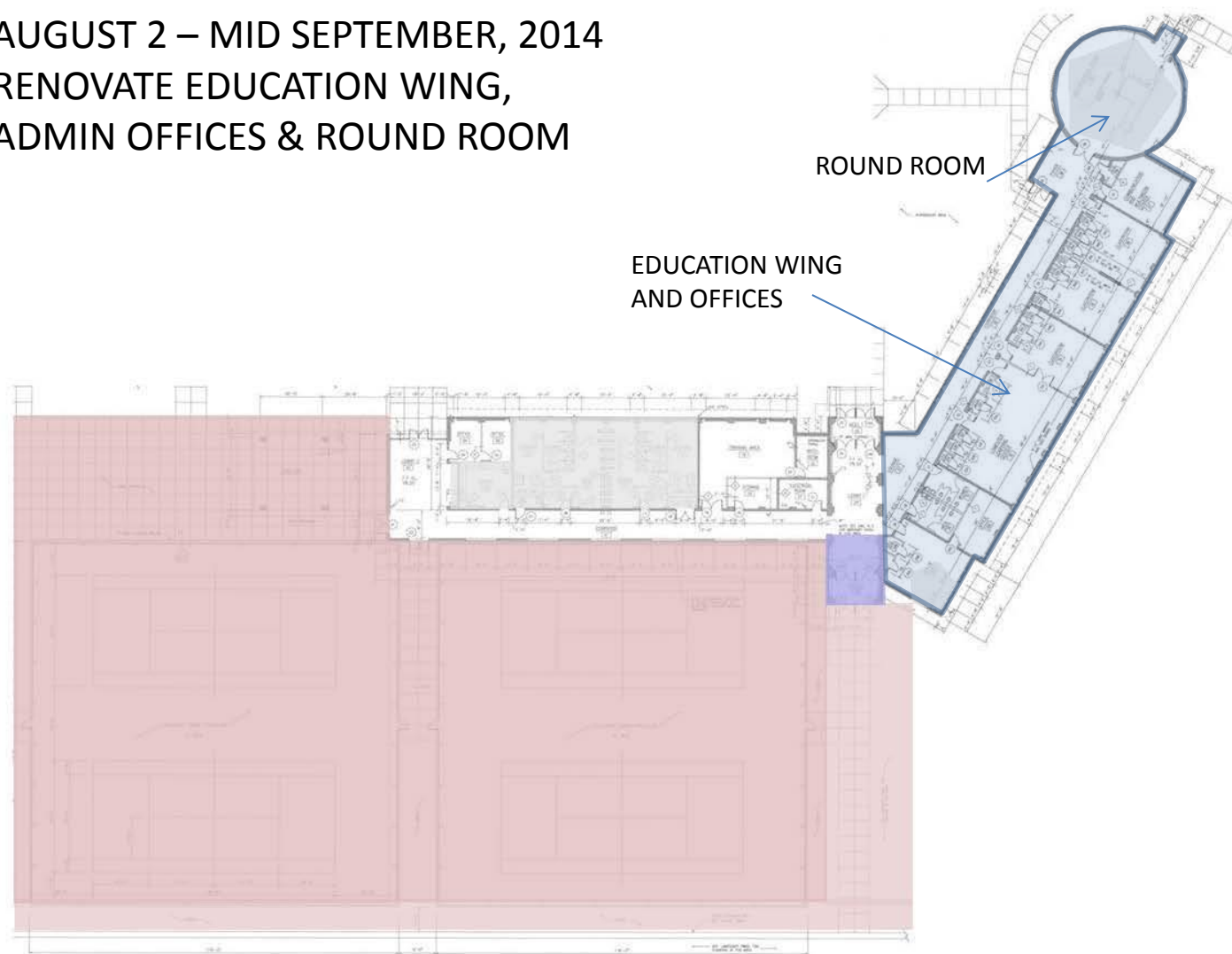


SOUTHEAST TENNIS AND LEARNING CENTER



MOODY•NOLAN
RESPONSIVE ARCHITECTURE

AUGUST 2 – MID SEPTEMBER, 2014
RENOVATE EDUCATION WING,
ADMIN OFFICES & ROUND ROOM

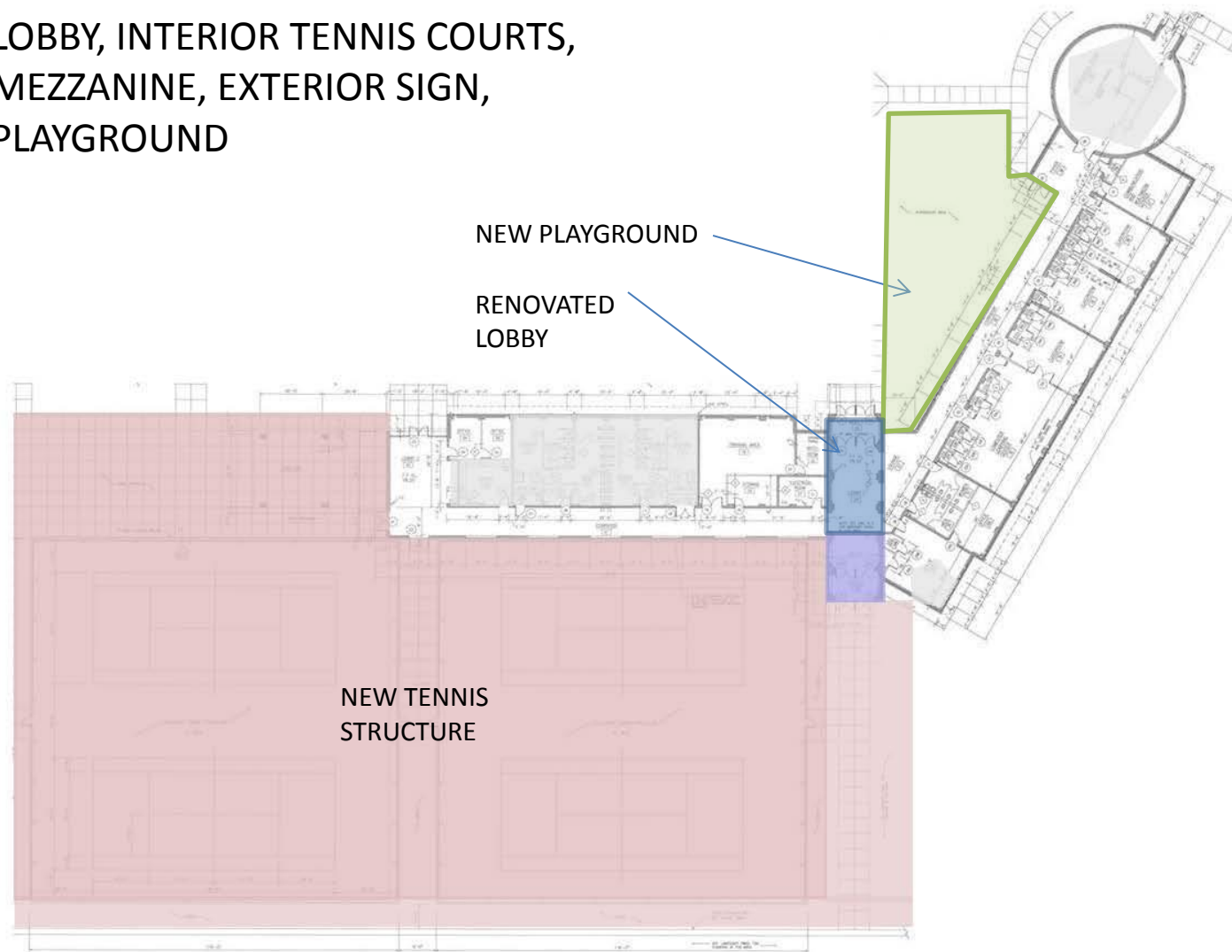


SOUTHEAST TENNIS AND LEARNING CENTER



MOODY•NOLAN
RESPONSIVE ARCHITECTURE

SEPT-END OF OCT 2014
LOBBY, INTERIOR TENNIS COURTS,
MEZZANINE, EXTERIOR SIGN,
PLAYGROUND

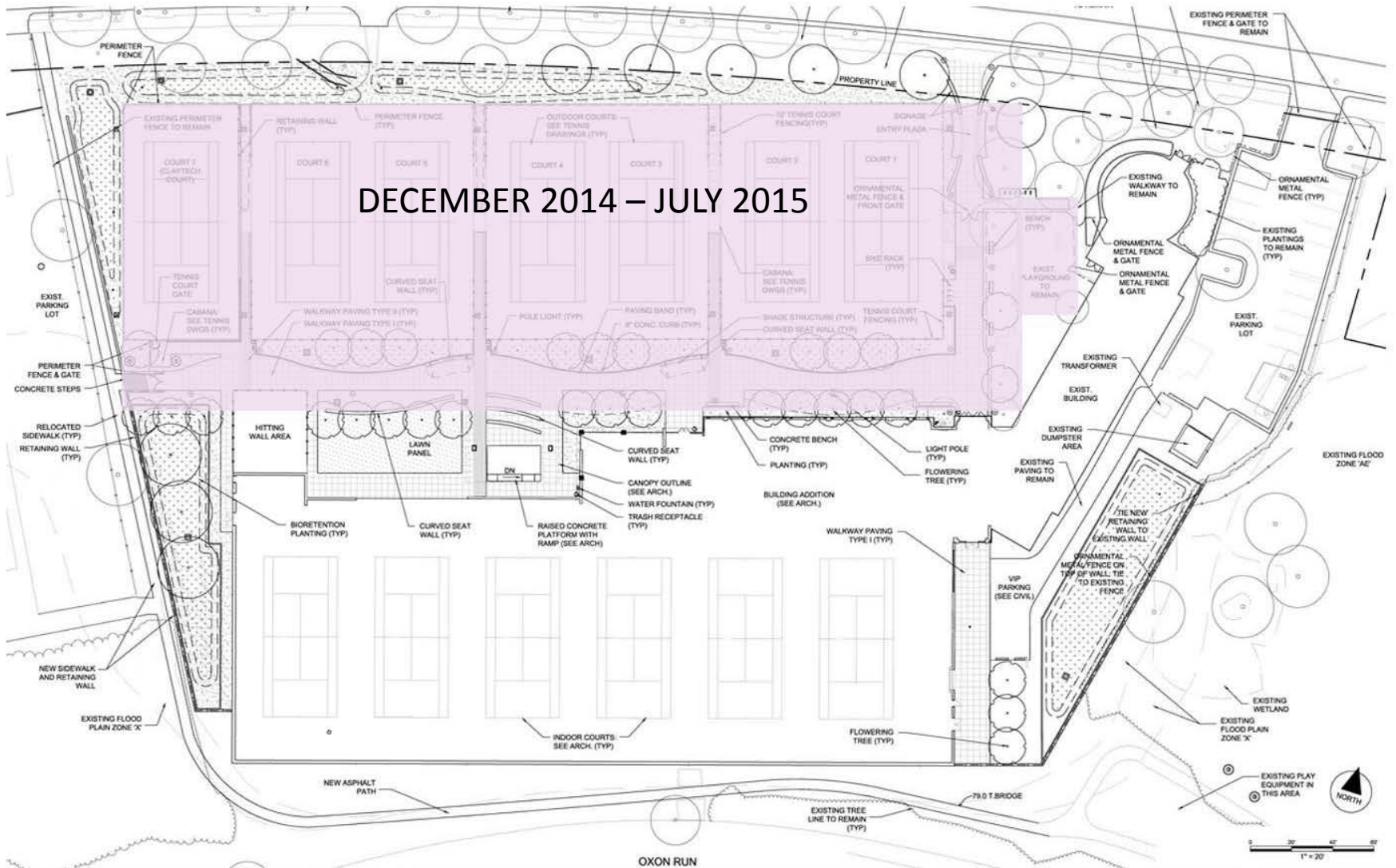


SOUTHEAST TENNIS AND LEARNING CENTER



MOODY•NOLAN
RESPONSIVE ARCHITECTURE

DECEMBER 2014 – JULY 2015



SOUTHEAST TENNIS AND LEARNING CENTER



MOODY•NOLAN
RESPONSIVE ARCHITECTURE



SOUTHEAST TENNIS & LEARNING CENTER



PROGRAMMATIC/ COMMUNITY IMPACT



SOUTHEAST TENNIS & LEARNING CENTER



SOUTHEAST TENNIS AND LEARNING CENTER

Programmatic / Community Impact

Activity	Timeline
Afterschool Program	February 2014 - June 2014
Summer Programs	June 2014 - August 2014
Afterschool Program	September 2014 - November 2014
Programs will resume to normal without outdoor courts	November 2014 - July 2015
Other affected Programs	
Contracts	
Public Courts	
Adult Clinics	
School Partners	



SOUTHEAST TENNIS & LEARNING CENTER



NEXT STEPS



SOUTHEAST TENNIS & LEARNING CENTER



QUESTIONS & ANSWERS



SOUTHEAST TENNIS & LEARNING CENTER



Contact Information

Jackie Stanley

jackie.stanley@dc.gov

Website - dgs.dc.gov

Get **Social** with us on Facebook & Twitter Today!



Follow @DCDGS



Become a Fan @DC Department of General Services



foursquare



You Tube

tumblr

flickr