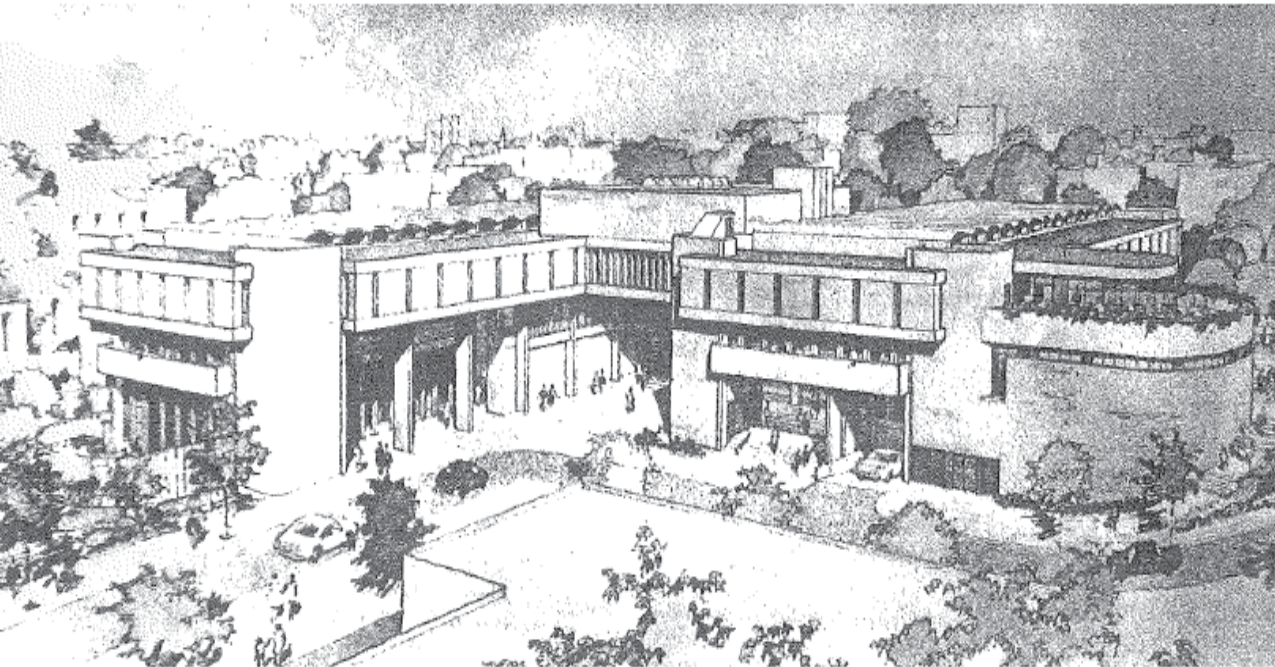
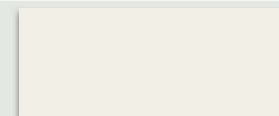


COMMUNITY MEETING

MARIE H. REED COMMUNITY
LEARNING CENTER



14 JANUARY 2016



Agenda

MARIE REED INTRODUCTION

2016-2017 SCHOOL YEAR SWING (Q/A after each scenario)

OPTION 1: OCCUPY EXISTING SCHOOL & TEMPORARY 1/2 SCHOOL ON BASKETBALL COURT IN TRAILERS

OPTION 2: TRAILER COMPLEX ON SOCCER FIELD

OPTION 3: RELOCATE SCHOOL TO MACFARLAND

NEXT STEPS & HOW TO SUBMIT COMMENTS

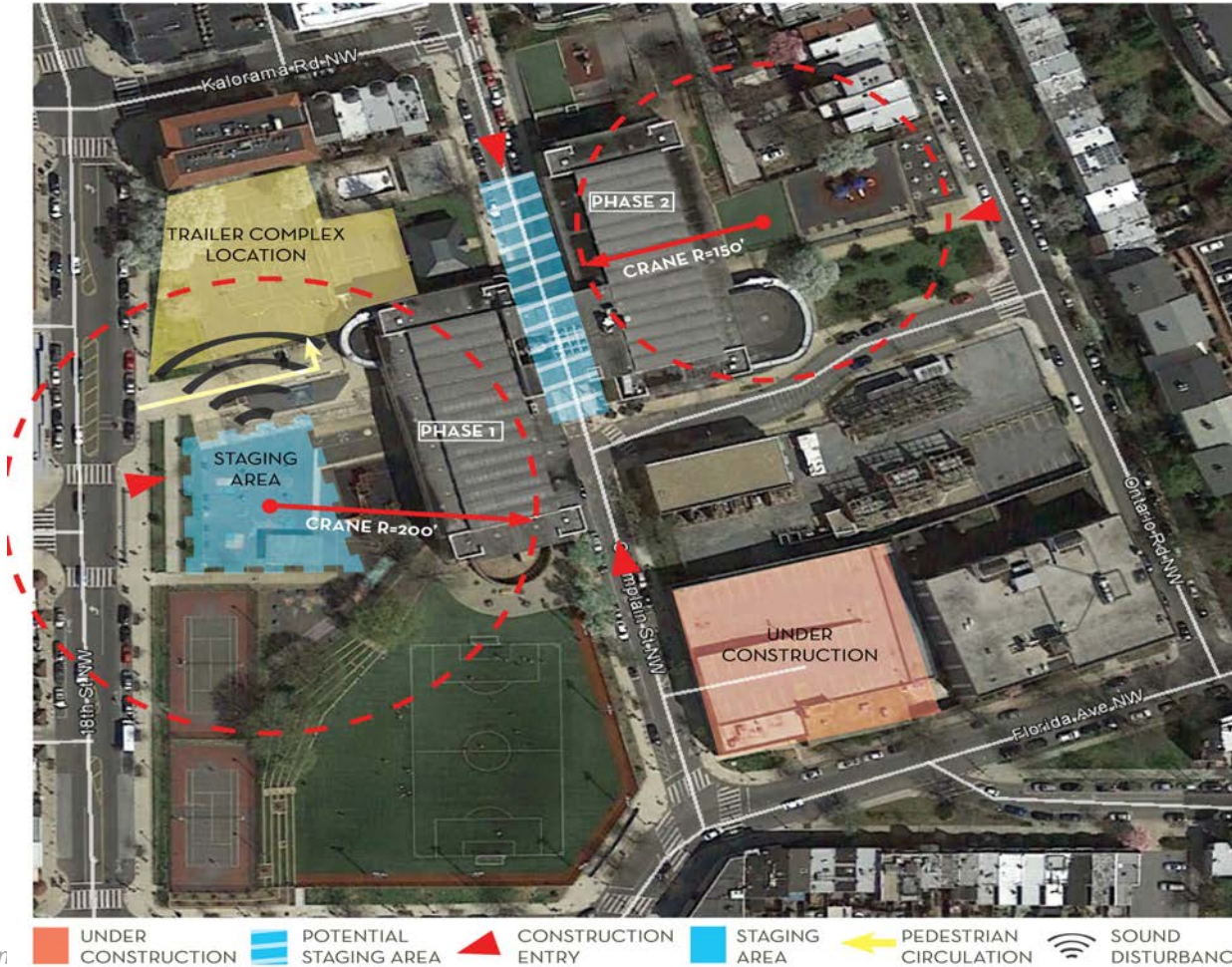


Community Meeting

2016 - 2017 SCHOOL YEAR

OPTION 1- OCCUPY EXISTING SCHOOL & TEMPORARY 1/2 SCHOOL ON BASKETBALL COURT

This option includes two on-site construction phases.



Community Meeting

2016 - 2017 SCHOOL YEAR

OPTION 1- OCCUPY EXISTING SCHOOL & TEMPORARY 1/2 SCHOOL ON BASKETBALL COURT

School would have to move over Winter Break.



PHASE 1
(WEST WING CONSTRUCTION)
SUMMER - WINTER 2016



PHASE 2
(EAST WING CONSTRUCTION)
WINTER – SUMMER 2017



Community Meeting

2016 - 2017 SCHOOL YEAR

OPTION 1- OCCUPY EXISTING SCHOOL & TEMPORARY 1/2 SCHOOL ON BASKETBALL COURT

PROS:

- **IMPACT ON FAMILIES**
 - School remains in the Marie Reed Community.
 - Limited interruption to family logistics, especially around drop off and pick up.
- **LEARNING ENVIRONMENT**
 - Students would occupy some modernized spaces for half the year.
- **TRANSPORTATION**
 - No bussing to off-site Location

CONS:

- **HEALTH & SAFETY**
 - Students walk thru construction site
 - Air quality from dust & debris
 - Concern around pick up and drop off w/ construction traffic.
- **LEARNING ENVIRONMENT**
 - Construction noise
 - Limited play space
 - Multiple moves
- **Site Logistics**
 - Co-existing with construction crews, limited pathways through construction zones.
 - Limited parking in phase II
 - Increased congestion with pick up and drop off
- **CONSTRUCTION**
 - Very little flexibility in the schedule.
 - Higher cost for trailers



Community Meeting

2016 - 2017 SCHOOL YEAR

OPTION 1- OCCUPY EXISTING SCHOOL & TEMPORARY 1/2 SCHOOL ON BASKETBALL COURT

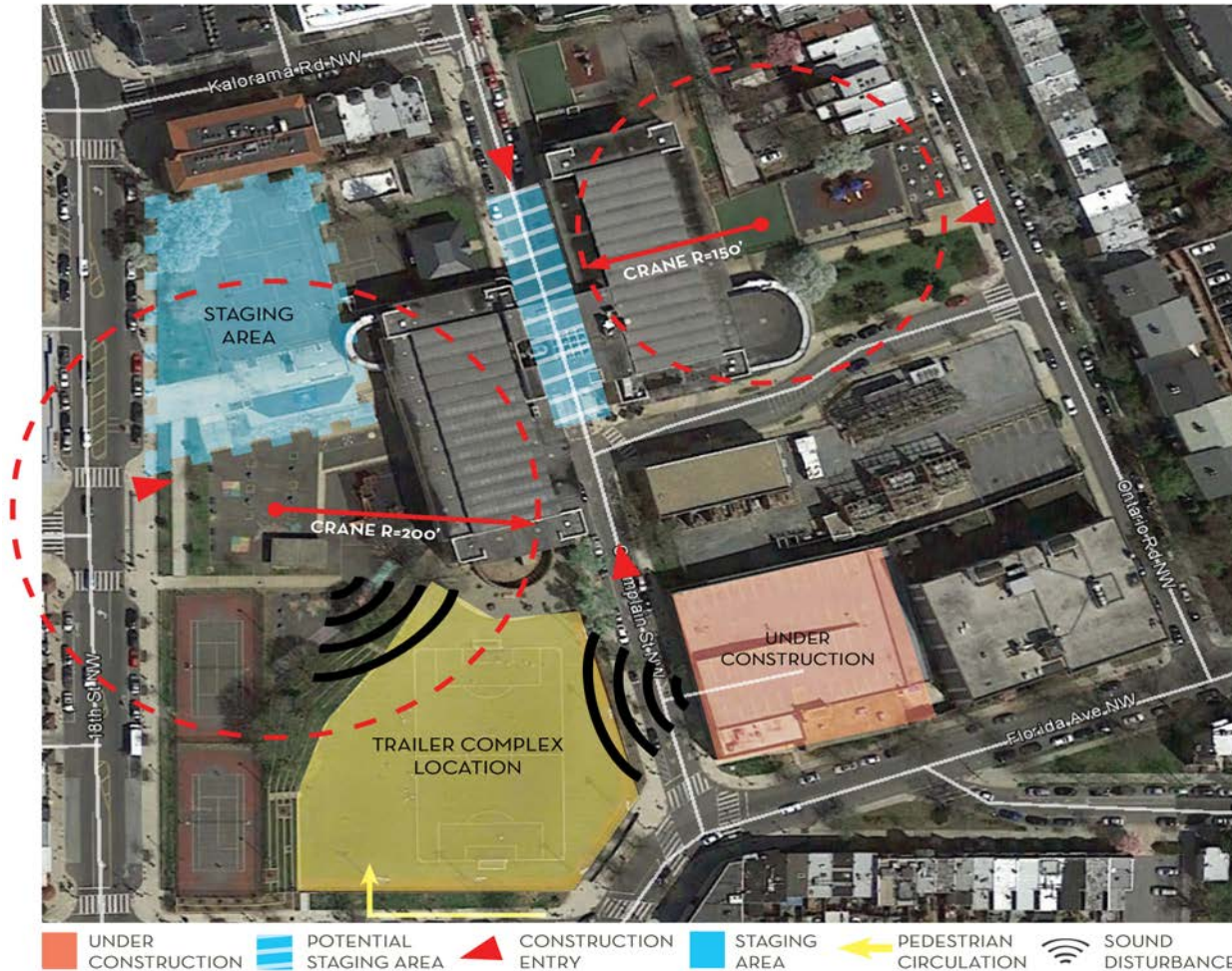
OPTION 1 QUESTIONS / COMMENTS



Community Meeting

2016 - 2017 SCHOOL YEAR

OPTION 2- TRAILER COMPLEX ON SOCCER FIELD



Community Meeting

2016 - 2017 SCHOOL YEAR

OPTION 2- TRAILER COMPLEX ON SOCCER FIELD



SUMMER 2016 - SUMMER 2017



Community Meeting

2016 - 2017 SCHOOL YEAR

OPTION 2- TRAILER COMPLEX ON SOCCER FIELD

PROS:

- **IMPACT ON FAMILIES**
 - School remains in the Marie Reed Community.
 - Limited interruption to family logistics, especially around drop off and pick up.
- **LEARNING ENVIRONMENT**
 - No mid-year move
 - Integrated trailers
- **TRANSPORTATION**
 - No bussing to off-site Location

CONS:

- **HEALTH & SAFETY**
 - Air quality from dust & debris
 - Active construction zone with multiple vehicles. Concern around pick up and drop off.
- **LEARNING ENVIRONMENT**
 - Classroom size is minimal
 - Limited play space
 - Nearby construction noise
- **TRANSPORTATION**
 - Navigating through construction traffic
 - Limited areas for pick-up & drop-off
 - Limited staff parking
- **COMMUNITY**
 - Field would be off-line for a year
- **CONSTRUCTION**
 - Higher cost for trailers/field replacement



Community Meeting

2016 - 2017 SCHOOL YEAR

OPTION 2- TRAILER COMPLEX ON SOCCER FIELD

OPTION 2
QUESTIONS / COMMENTS



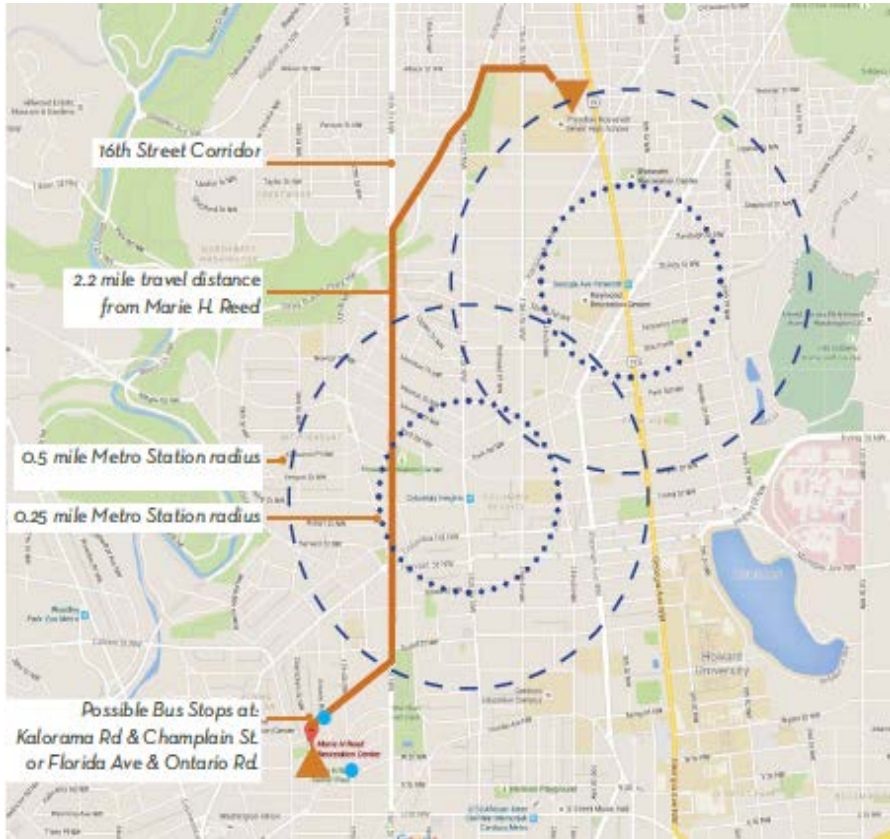
Community Meeting
2016 - 2017 SCHOOL YEAR
OPTION 3- RELOCATE TO MAC FARLAND



Community Meeting

2016 - 2017 SCHOOL YEAR

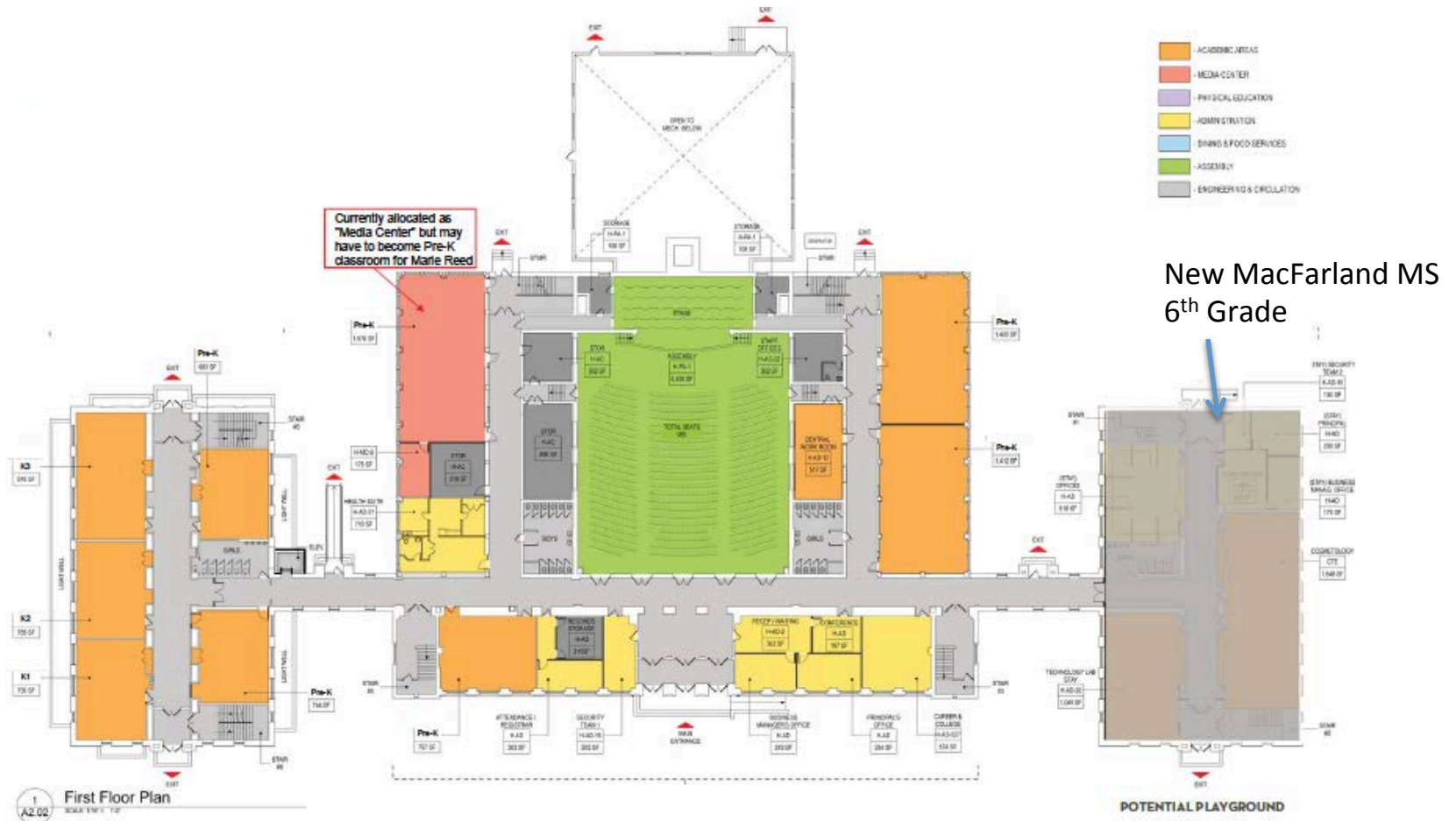
OPTION 3- RELOCATE TO MAC FARLAND



Community Meeting

2016 - 2017 SCHOOL YEAR

OPTION 3- RELOCATE TO MAC FARLAND



Community Meeting
2016 - 2017 SCHOOL YEAR
OPTION 3- RELOCATE TO MAC FARLAND



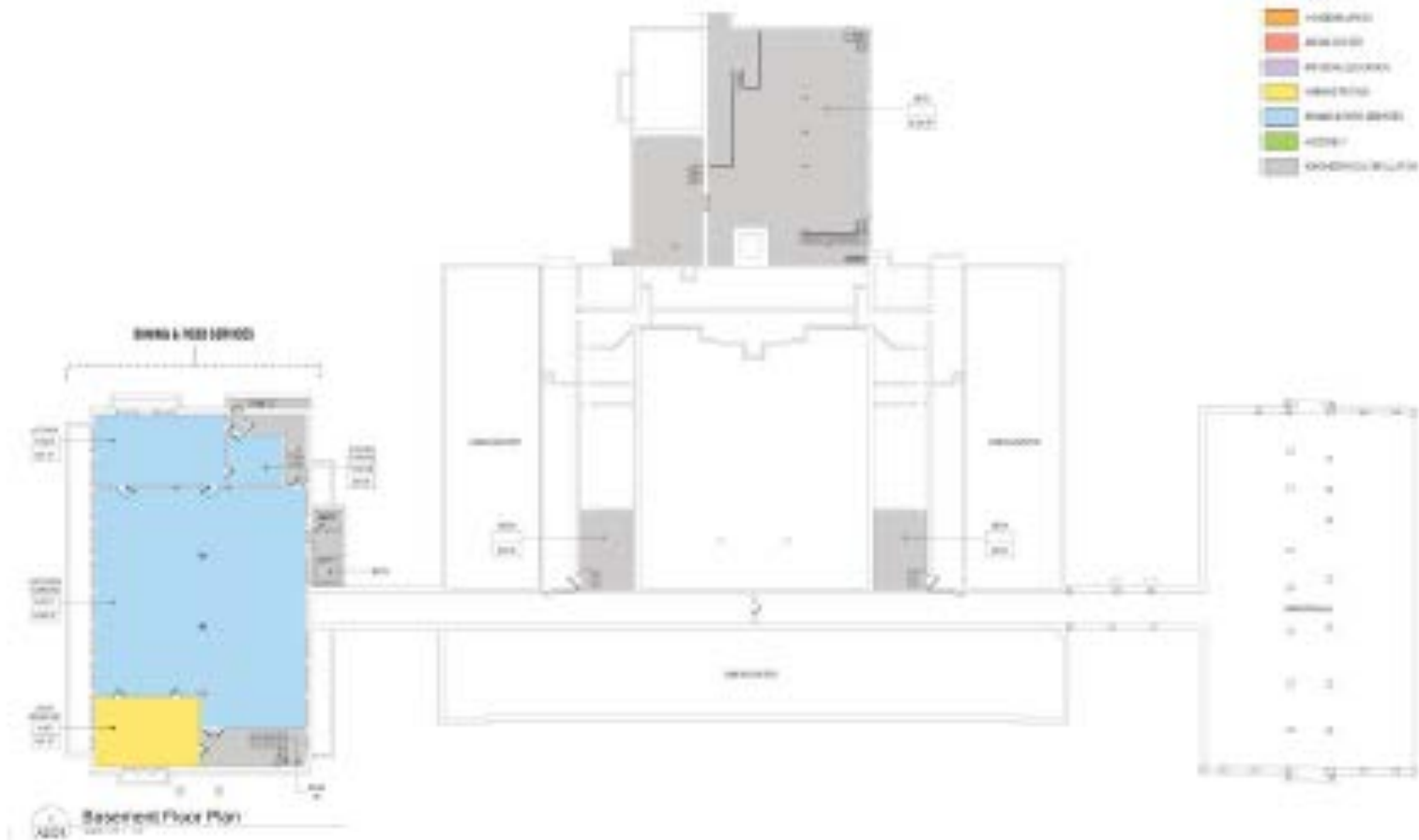
Community Meeting
2016 - 2017 SCHOOL YEAR
OPTION 3- RELOCATE TO MAC FARLAND



Community Meeting

2016 - 2017 SCHOOL YEAR

OPTION 3- RELOCATE TO MAC FARLAND



Community Meeting

2016 - 2017 SCHOOL YEAR

OPTION 3- TRANSPORTATION

- If the off-site option is selected, DCPS will provide transportation for students to and from MacFarland.
- To figure out transportation needs and logistics, a subgroup with DCPS Central Office, Marie Reed school leadership, and parents would be formed to help answer questions like:
 - # of students requiring transportation
 - Pick up and drop off times
 - Pick up and drop off locations
- DCPS would use this information to solicit bids for a transportation company to provide the transportation service.



Community Meeting

2016 - 2017 SCHOOL YEAR

OPTION 3- RELOCATE TO MAC FARLAND

PROS:

- **HEALTH & SAFETY**
 - *Away from active construction site.*
- **LEARNING ENVIRONMENT**
 - *Larger classroom space*
 - *Full use of gym*
 - *Play space*
 - *School would remain together*
- **TRANSPORTATION**
 - *Adequate staff parking*
- **CONSTRUCTION**
 - *No phased construction cost*

CONS:

- **IMPACT ON FAMILIES**
 - *School no longer in the Marie Reed Community. Unfamiliar location for students.*
 - *Would alter family logistics – pick up and drop off times.*
- **Transportation**
 - *Students bussed to off-site swing, which would result in a longer day.*



Community Meeting

2016 - 2017 SCHOOL YEAR

OPTION 3- RELOCATE TO MAC FARLAND

OPTION 3 QUESTIONS / COMMENTS



Community Feedback - Next Steps

- DCPS/DGS will post summary of meeting notes by 1/20.
- Community can submit comments and questions until 1/25.
- DCPS/DGS will issue a summary of responses by 1/29.
- DCPS will evaluate each option, taking community input into consideration.
- DCPS senior leadership will make decision by the first week of February.

- How to submit comments:
 - a) Link to the Google form: <http://goo.gl/forms/B00ECtRfq5>
 - b) E-mail us directly at sit.info@dc.gov
 - c) Leave a comment card here tonight.

Note: Responses to comments already received will be posted on the DGS page tomorrow:
<http://dgs.dc.gov/page/marie-reed-elementary-school-project>

